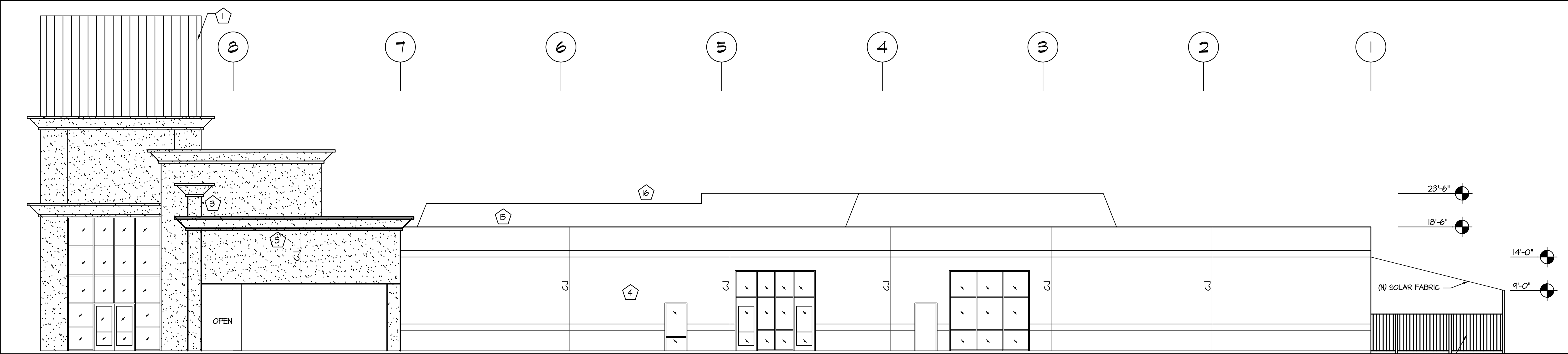




FINISH	MFR.	STYLE	COLOR
1. VISIBLE METAL ROOF	GARGO	KLIP-RIB	KYNAR DARK BRONZE
2. MANSARD TILE ROOFING	NA	MISSION TILE	EXIST. TERRA COTTA
3. PARAPET BACK PANEL	GARGO	RM	KYNAR ALMOND
4. CONG. TILT-UP	TEXCOTE	TEXCOTE	COLOR BY OWNER
5. EXTERIOR PLASTER	VALLEY	KNOCK DOWN	MATCH EXIST.
6. ACCENT PLASTER	VALLEY	KNOCK DOWN	KM #102-D
7. POP-OUT PILASTERS	BAYFOAM	PLASTER COATED	MATCH STUCCO
8. PARAPET TRIM	BAYFOAM	PLASTER COATED	KM #102-D
9. PARAPET FLASH-CAP	GARGO	G.S.M.	KYNAR DARK BRONZE
10. STOREFRONT	US ALUM.	BRONZE ANODIZED	SOLAR GRAY GLASS
11. H.M. DOORS	CECO	HOLLOW METAL	MATCH WALLS
12. H.M. DOOR FRAMES	CECO	KNOCK DOWN	MATCH WALLS
13. ROLL-UP DOORS	OVERHEAD	600-GAW	MATCH WALLS
14. ACCENT TILE	DAL TILE	6" GLAZED	MATCH METAL RFG.
15. BUILT-UP ROOF	NA	NA	EXIST. TO REMAIN
16. MECH. SCREEN	NA	MET. PANELS	EXIST. WHITE

SUBSTITUTION PENDING APPROVAL - MATCH EXISTING FINISHES & COLORS.

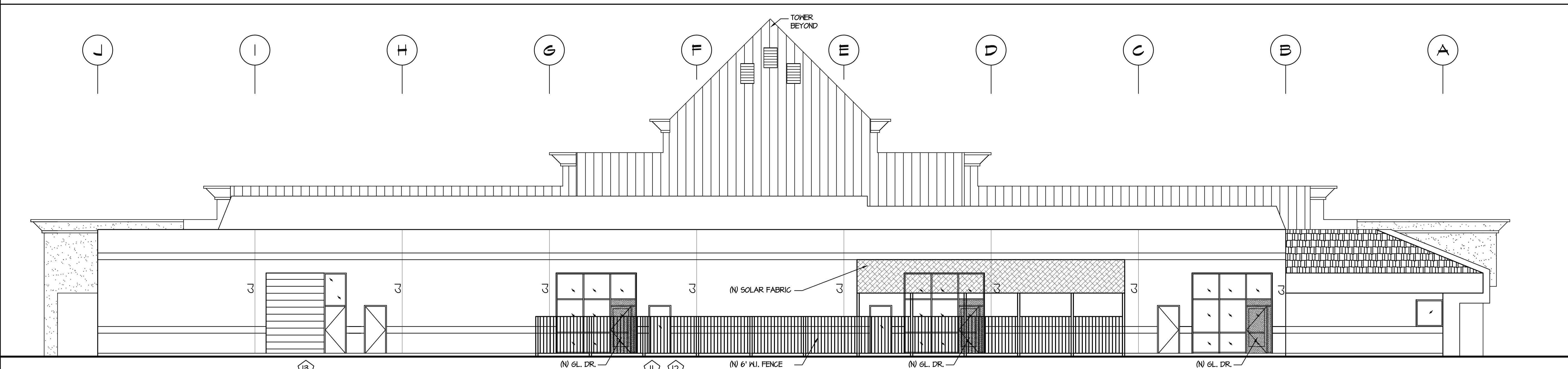
EAST



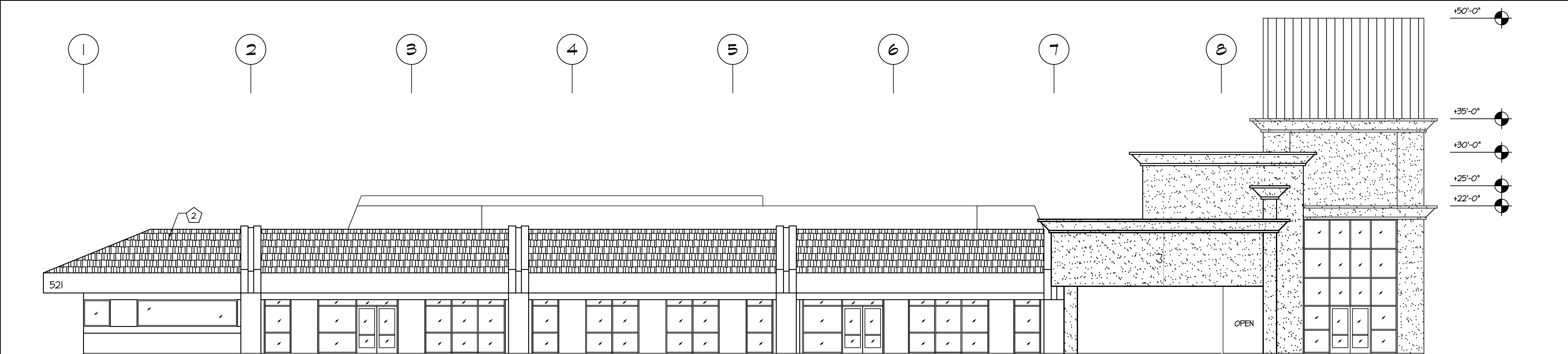
NOTE:

1. BLDG. EXTERIOR TO REMAIN AS IS, EXCEPT EX. STOREFRONT TO BE MODIFIED TO ADD A GLASS DOOR IN 3 CLASSROOMS.

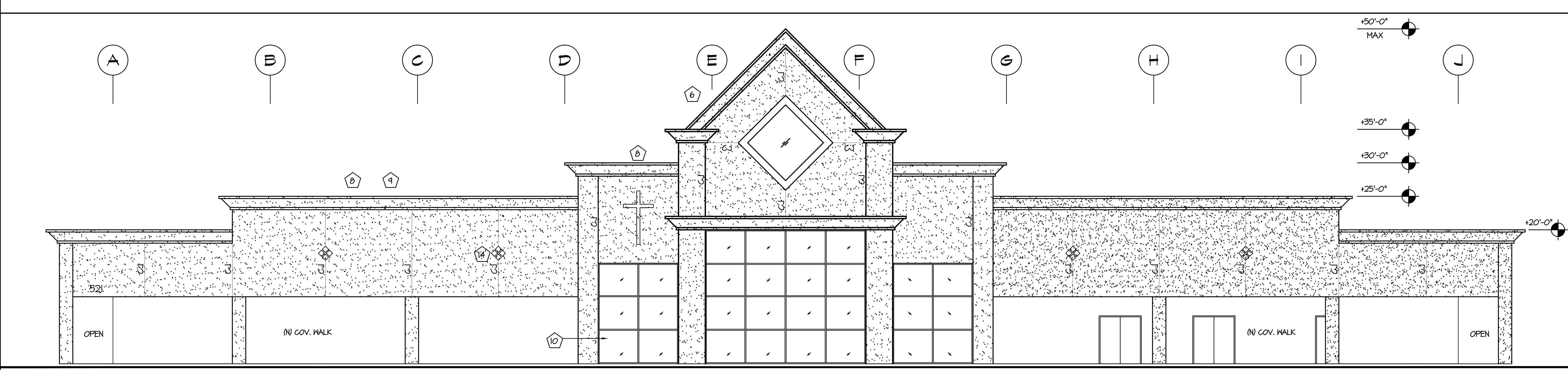
NORTH



WEST



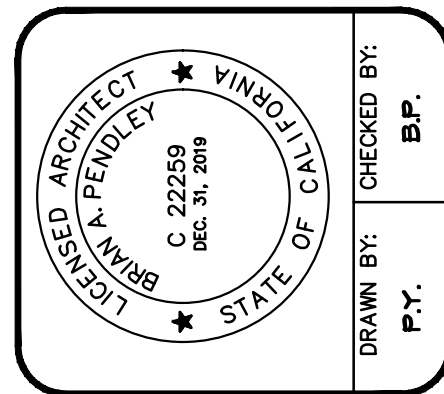
SOUTH



0 4 8 16  
SCALE: 1/8" = 1'-0"

NO CHANGES TO EXTERIOR

DATE	BY	NO.	REVISION



**PENDLEY & ASSOCIATES, INC.**  
ARCHITECTURE • ENGINEERING • PLANNING  
9008 SEGEL • VALLEY SPRINGS • CALIFORNIA • 95252  
PHONE (209) 786-3700 • FAX (209) 323-2003  
E-MAIL: brian@pendleyinc.com WEB: www.pendleyinc.com

EXTERIOR ELEVATIONS

DAYCARE/PRESCHOOL FOR  
SUNNYVALE INTERNATIONAL ACADEMY  
621 WEDDELL DR., SUNNYVALE, CA 94089

SCALE: 1/8" = 1'-0"
DATE: 9-1-18
JOB NO. 18073

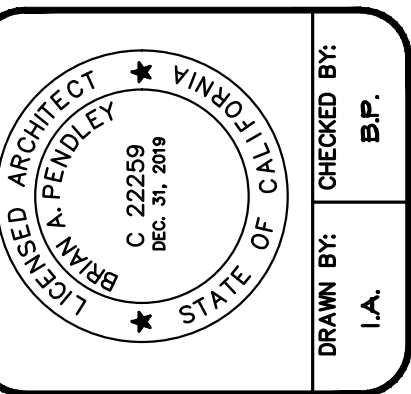
SHEET
<b>A3</b>
OF SHEETS
PLOT DATE: 3-20-19

521-16-1-EXT-225K.dwg





DATE	BY	NO.	REVISION



**PENDLEY & ASSOCIATES, INC.**  
ARCHITECTURE • ENGINEERING • PLANNING  
9008 SIEGEL • VALLEY SPRINGS • CALIFORNIA • 95252  
PHONE (209) 786-3700 • FAX (209) 323-2003  
E-MAIL: brian@pendleyinc.com WEB: www.pendleyinc.com

FLOOR PLAN

NEW DAYCARE/PRESCHOOL FOR  
SUNNYVALE INTERNATIONAL ACADEMY  
621 E. WEDDELL DR., SUNNYVALE, CA 94089

SCALE: 1/8" = 1'-0"  
DATE: 9-1-18  
JOB NO. 18073

SHEET  
**A2**  
OF SHEETS  
PLOTTER: 9-1-18



# Commercial 95®

## Material Safety Data Sheet

## Shadecloth Range

Page 1 of 2  
Rev.4 03/14

### Identification

<b>Product Name</b>	Commercial 95	<b>UN Number</b>	Not Applicable
<b>Other Names</b>	Com95	<b>Hazchem Code</b>	Not Applicable
<b>Product Code</b>	Refer Product Profile	<b>Dangerous Goods Class</b>	Not Applicable
		<b>Poisons Schedule</b>	Not Applicable
<b>Application</b>	Shadecloth for use in architectural tension structures, shade sails, privacy screens etc.		

### Physical Description & Properties

<b>Appearance</b>	Odourless knitted fabric in varying colours	<b>Flashpoint</b>	Not applicable
<b>Melting point</b>	140 °C (284 °F)	<b>Flammability limits</b>	Refer Product Profile
<b>Vapour pressure</b>	Not applicable	<b>Solubility in water</b>	Insoluble
<b>Specific Gravity</b>	0.9		
<b>Other properties</b>			
<b>Ingredients</b>			

Chemical Entity	CAS no.	Proportion
Polyethylene	9002-88-4	~ 95%
Hindered light amine stabiliser	-	~ 1%
Other proprietary pigments and additives	-	~ 4%

### Health Effects

#### Exposure

<b>Ingestion</b>	This product is of a solid nature and should not be swallowed.	<b>First Aid</b>	If necessary, seek medical advice.
<b>Eye</b>	May irritate the eye from physical contact.	<b>First Aid</b>	This product is of a solid nature and should not contact the eye. Seek medical advice.
<b>Skin</b>	This fabric may be fabricated using high temperature equipment - beware of molten material.	<b>First Aid</b>	If molten plastic contacts the skin, cool affected area rapidly under cold, clean running water. Do not peel molten plastic from skin. Seek medical advice.
<b>Inhalation</b>	Avoid fumes and or dust generated from, welding, burning or dust from other handling	<b>First Aid</b>	If affected by fumes or dust, remove to a clean well ventilated area. If necessary, seek medical advice

#### Provisional Specification

The above results are typical averages from quality assurance testing and are not to be taken as a minimum specification nor as forming any contract between GALE Pacific and another party. Due to continuous product improvement product specifications are subject to alteration without notice.

As the use and disposal of this product are beyond GALE Pacific's control, regardless of any assistance provided without charge, GALE Pacific assumes no obligation or liability for the suitability of its products in any specific end use application. It is the customer's responsibility to determine whether GALE Pacific's products are appropriate for the specific application and complies with any legal & patent regulations.

<b>AU</b>	P 1800 331 521	F +61 3 9518 3398	gpcommercial.com
<b>NZ</b>	P 0800 555 171	F 0800 555 172	
<b>UAE</b>	P +971 4 881 7114	F +971 4 881 7167	
<b>USA</b>	P 1800 560 4667	F +1 407 772 0553	gpcommercialusa.com



# Commercial 95<sup>®</sup>

**Material Safety Data Sheet**
**Shadecloth Range**

 Page 2 of 2  
 Rev.4 03/14

## Precautions For Use

<b>Exposure standards</b>	Not established
<b>Engineering controls</b>	Fabricate in normal well ventilated areas, use additional ventilation or exhaust extraction systems when welding or hot knife cutting.
<b>Personal protection</b>	Use of general purpose protective gloves is recommended (but not essential) when handling fabric. Wash hands after working with fabric.
<b>Flammability</b>	Combustible but of low flammability. Extinguish by using water spray or extinguisher foam.
<b>Environment</b>	Not hazardous to water. May not break down readily when exposed to microbial attack during landfill disposal.

## Storage Requirements

<b>Storage</b>	Store in a cool dry area away from direct sunlight, halogens and highly acidic substances.
<b>Handling &amp; transport</b>	Use caution when loading and unloading fabric from vehicles. Refer to Product Profile for approximate roll weights.
<b>Spills &amp; Disposal</b>	The product is solid and therefore not subject to spillage. Incinerate under controlled conditions according to local regulations or dispose as an inert solid in a land fill according to local regulations.
<b>Fire &amp; Explosion</b>	The product may accumulate static charges which may cause an incendiary electrical discharge. Thermal decomposition temperature is approximately 280-300°C (536-572°F) combustion may produce carbon dioxide, carbon monoxide, oxides of nitrogen and sulphur as well as small quantities of other organic chemicals.

## OTHER INFORMATION

The resins and additives used in the material are not suitable for food contact.

### Provisional Specification

The above results are typical averages from quality assurance testing and are not to be taken as a minimum specification nor as forming any contract between GALE Pacific and another party. Due to continuous product improvement product specifications are subject to alteration without notice.

As the use and disposal of this product are beyond GALE Pacific's control, regardless of any assistance provided without charge, GALE Pacific assumes no obligation or liability for the suitability of its products in any specific end use application. It is the customer's responsibility to determine whether GALE Pacific's products are appropriate for the specific application and complies with any legal & patent regulations.

<b>AU</b>	P 1800 331 521	F +61 3 9518 3398	gpcommercial.com
<b>NZ</b>	P 0800 555 171	F 0800 555 172	
<b>UAE</b>	P +971 4 881 7114	F +971 4 881 7167	
<b>USA</b>	P 1800 560 4667	F +1 407 772 0553	gpcommercialusa.com