



# Copenhagen | Model City for Biking, Walking and Transit

Velkommen “Welcome”

Sunnyvale BPAC  
July 18, 2019

A photograph of the interior of a train, likely in Copenhagen, showing passengers and bicycles. The train has large windows and a clean, modern design. A sign above the windows reads "Pladsrummet er forbeholdt" with icons for a bicycle, a stroller, and a person in a wheelchair. The text "Copenhagenize" is overlaid on the image in a blue box.

# Copenhagenize



When you think of Copenhagen?



Do you think of?

Transit



Do you think of?

Architecture



Do you think of?

Places



# Why Copenhagen?

There is no better place to learn about public life and innovative  
city building

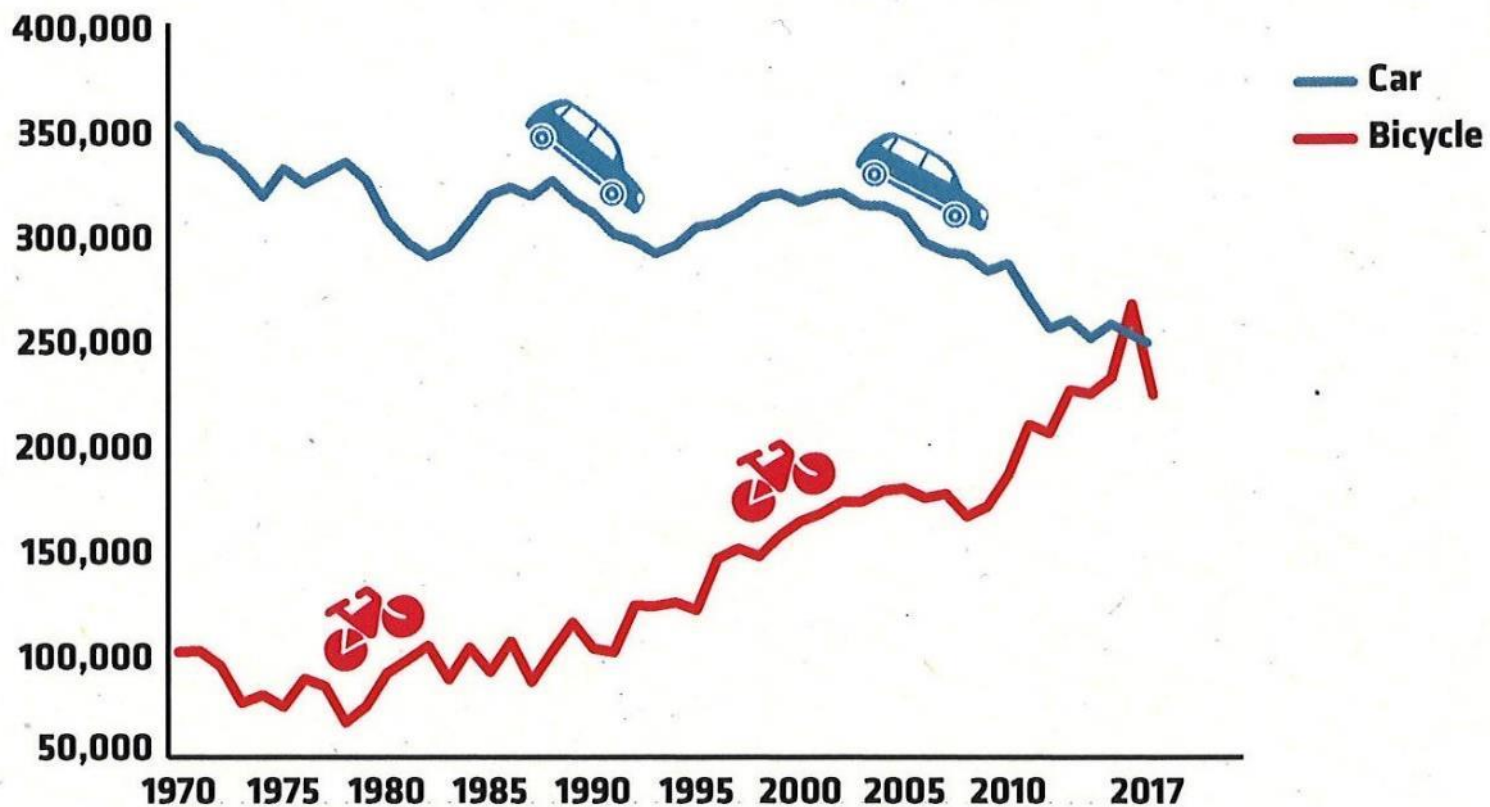
park on parking



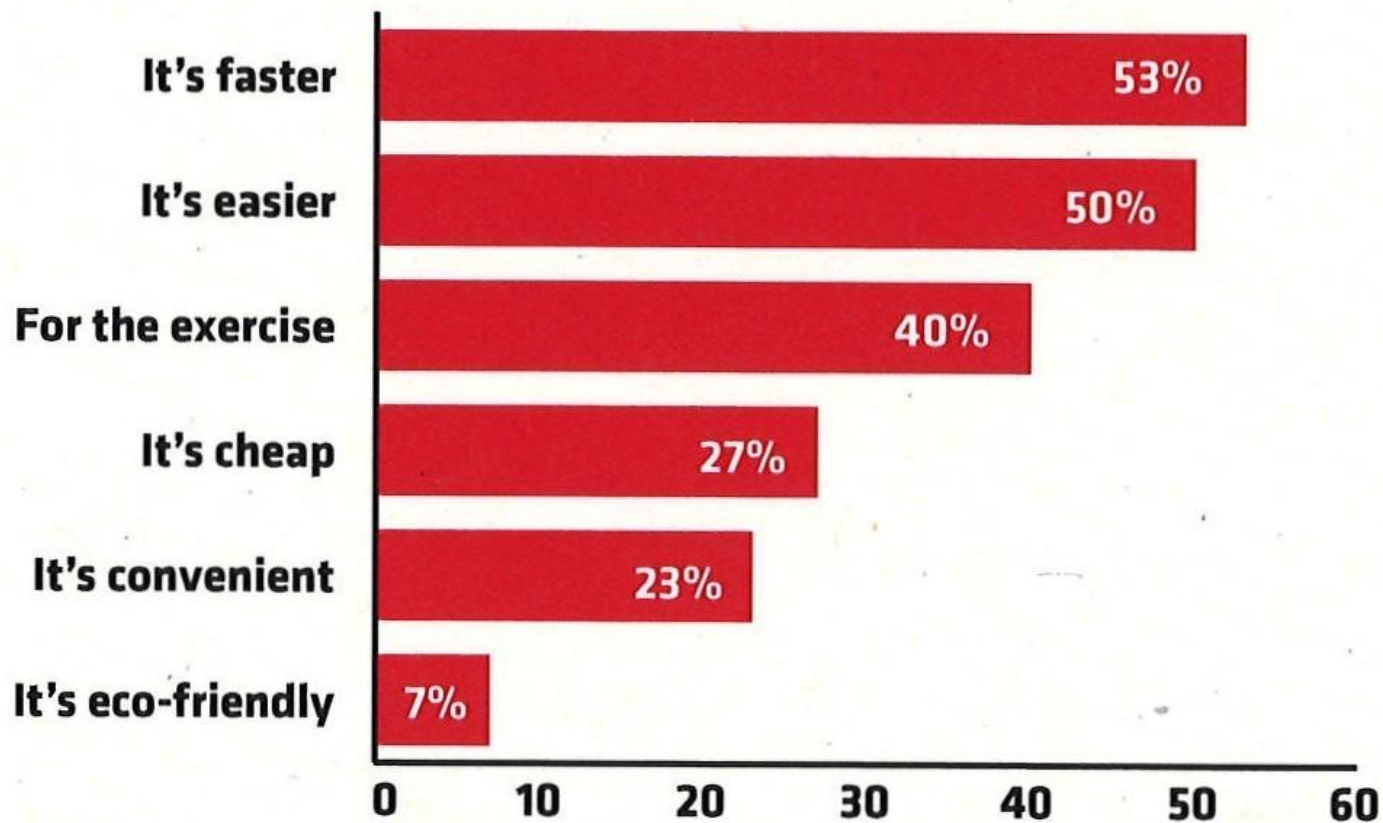
# By the numbers: measure everything

- 43% bike commute mode share
- 28% bike, 20% walk for all trips
- 265,700 bikes and 252,600 cars enter city center every day
- 20% live in social housing, 40% is low income
- 92% approve of government
- 20% more time in public space, met goal in 2015
- Taxes are high, really high...

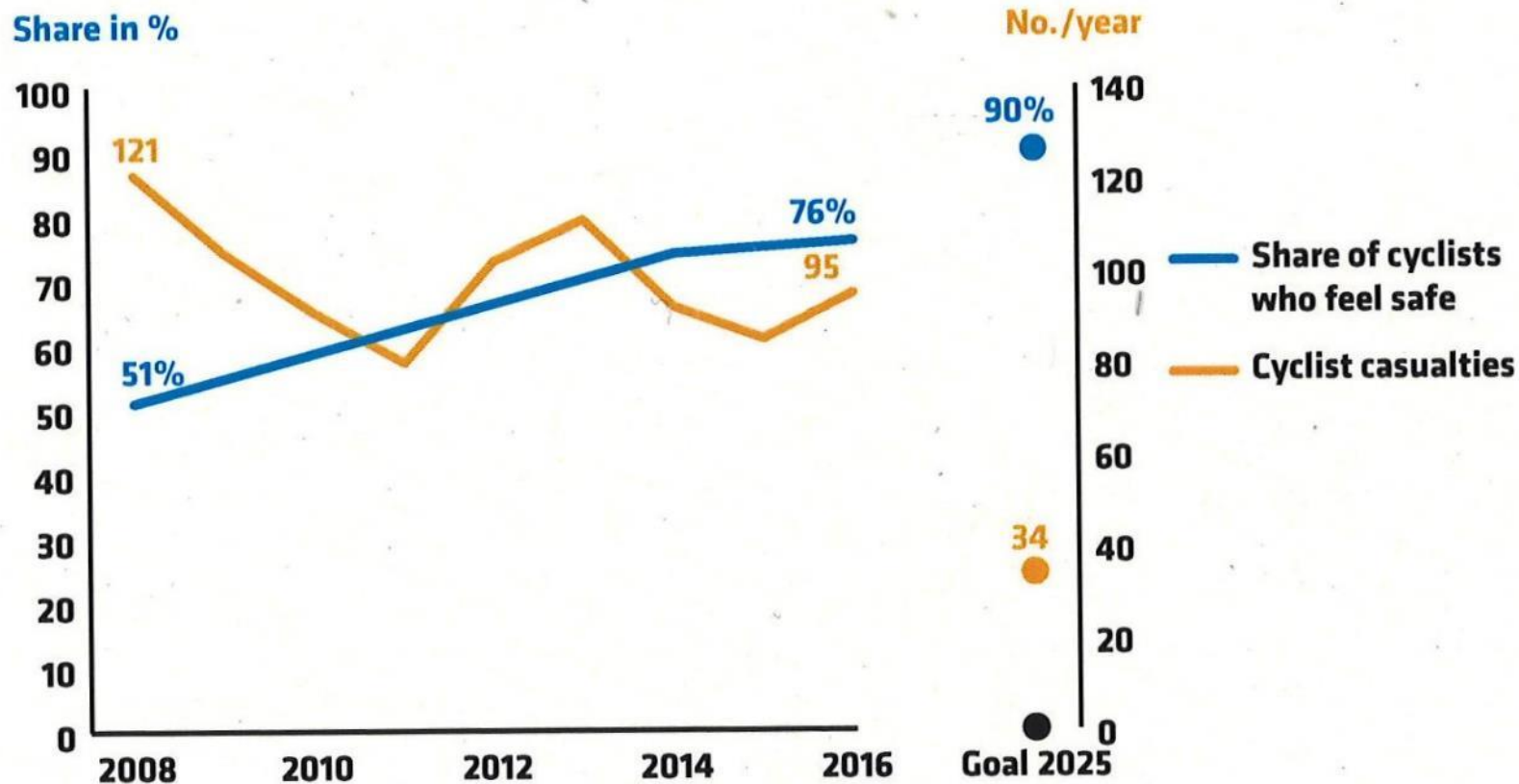
## TRAFFIC CROSSING THE CITY CENTER IN COPENHAGEN 1970-2017



## COPENHAGERNERS' REASONS FOR CYCLING



## GOALS FOR CYCLISTS FEELING OF SAFETY AND ACTUAL SAFETY 2008-2016





They have transformed  
their transportation  
system by focusing on:

- Bicycles
- Transit
- People



# COPENHAGEN, 1960s



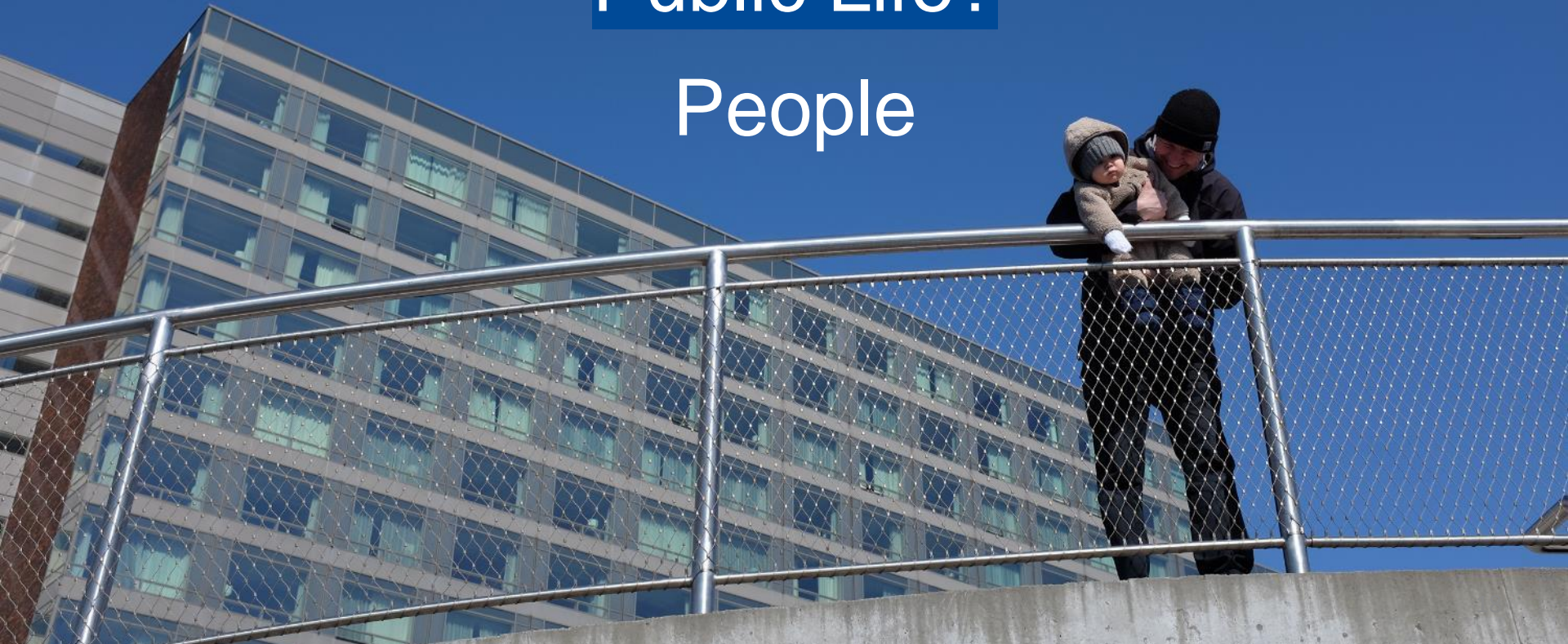
# COPENHAGEN, 2010s



*Evert Buitendijk fotografie*

# Why should Cities care about Public Life?

People



# Day 1: Create Cities for People

start with needs, co-create



strategic uppreparedness



urban acupuncture



start with needs, co-create



# Day 2: Implement Your Vision

bring in partners



city with an edge



architecture brings you out



# Day 3: Data and Design

measure everything

Du er nummer

15

I DAG

NS

og nummer

11 09

I ÅR

der cykler forbi her

GOD TUR

og tak fordi du cykler i byen!

RIVE KIT

I  
CPH

On this cycle track the City of Copenhagen counts  
the number of cyclists who have passed by today (i dag)  
and since the beginning of the year (i år)

indoor spaces are just as impactful

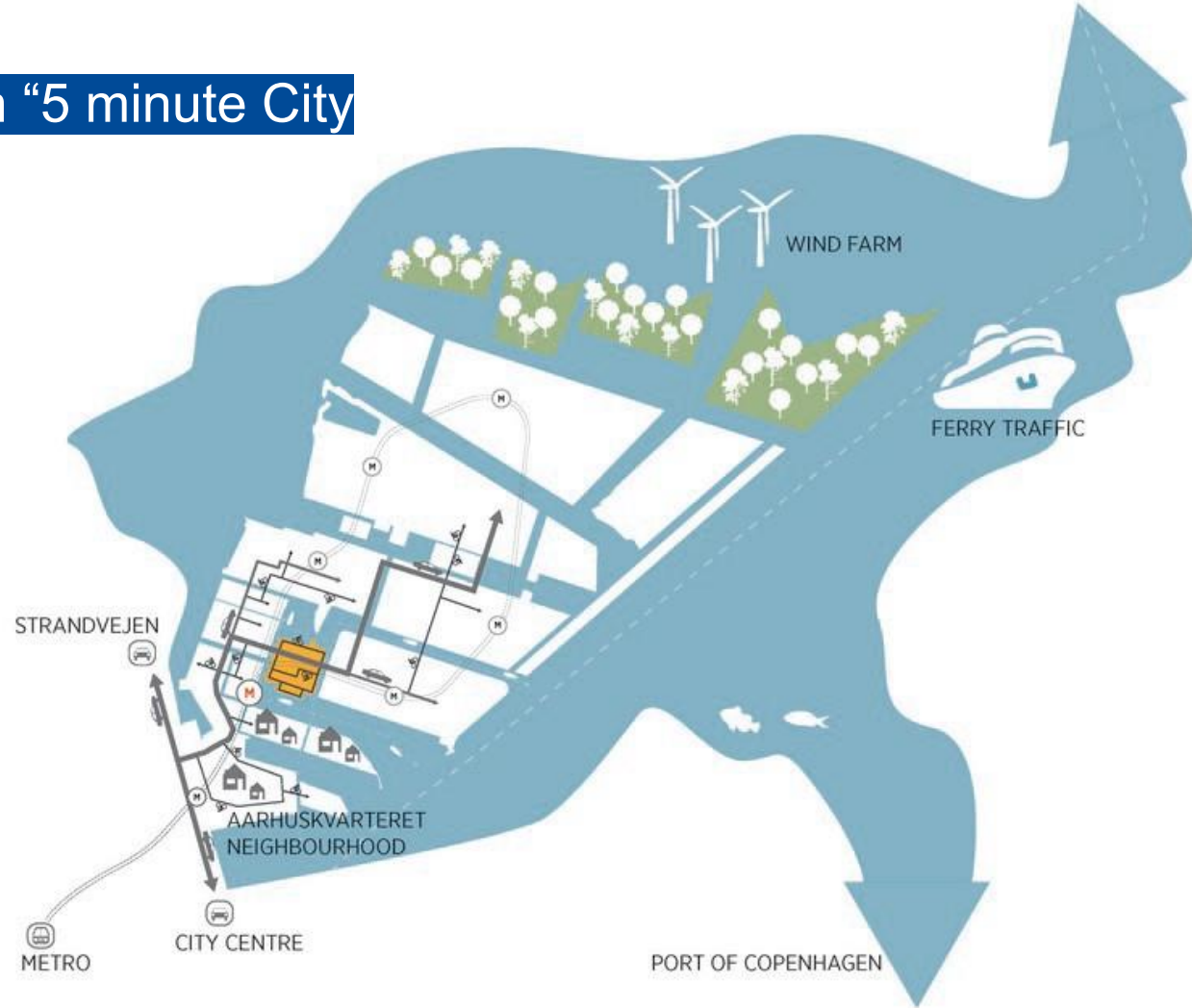
# WE LOVE ASPHALT



people not process

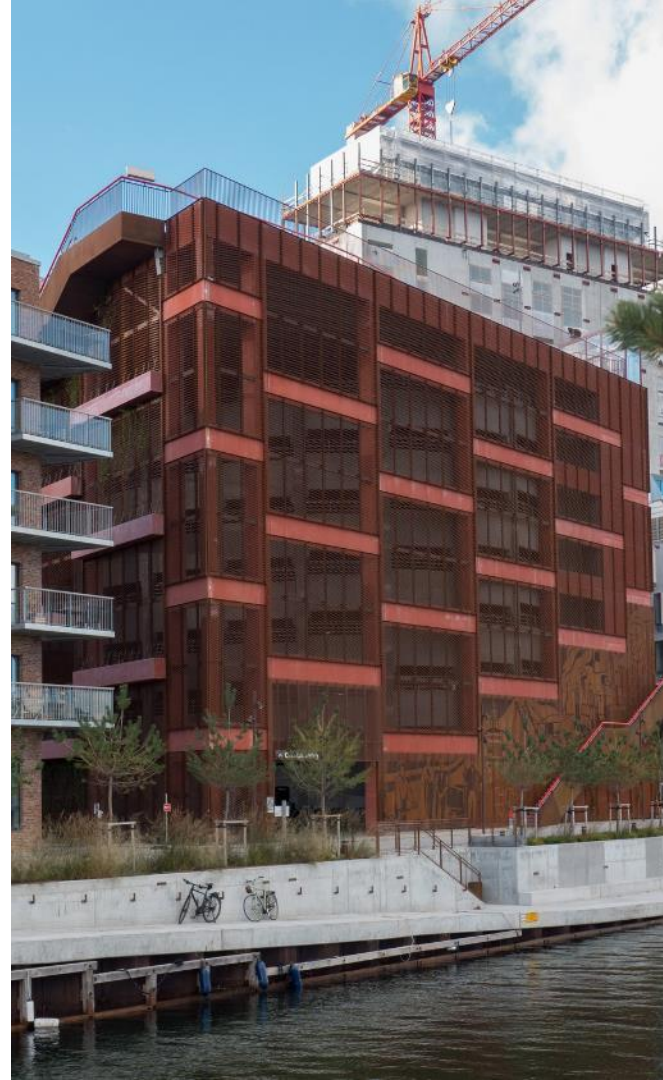


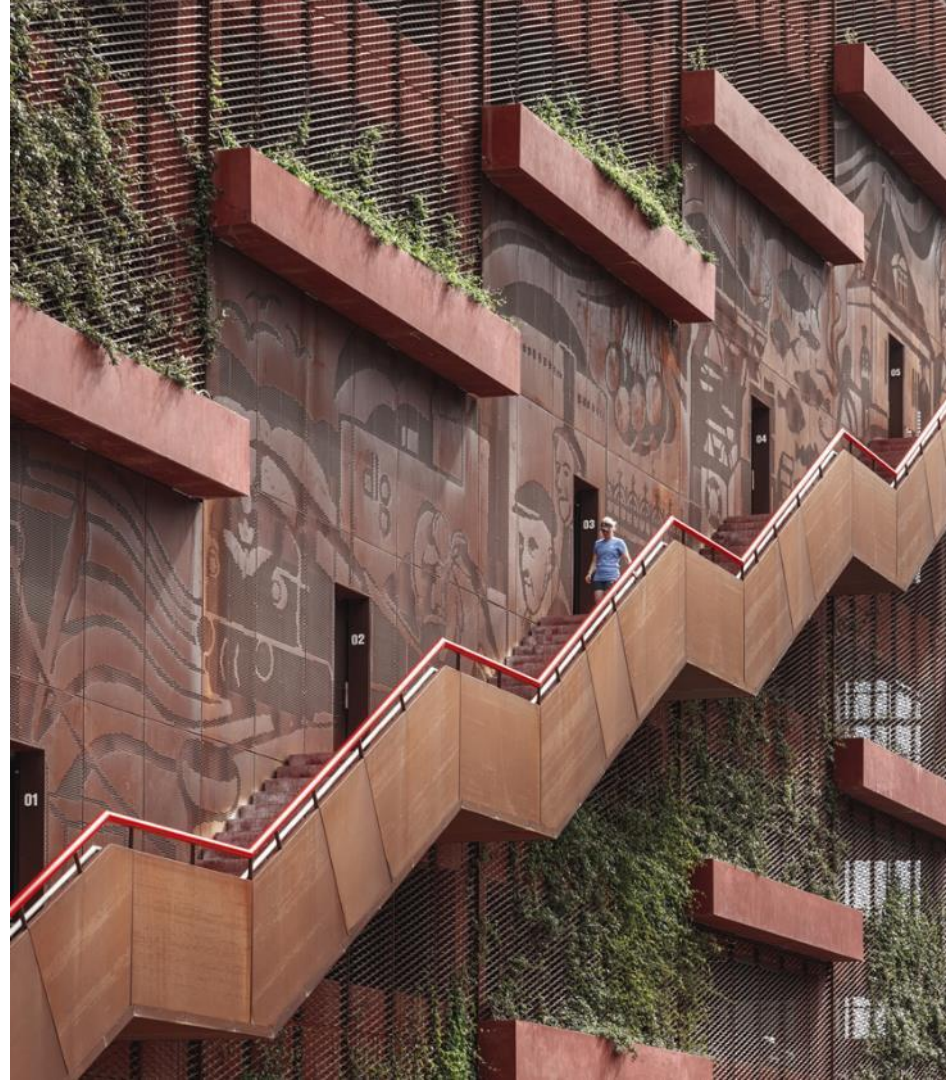
## Nordhaven “5 minute City”



40,000 people, 40,000 jobs







I can bring people outside by?

