



SMITHGROUP

City of Sunnyvale -Civic Center Phase I

Planning Commission Meeting – July 22, 2019

Agenda

Item #1 – Project Overview

Item #2 – Civic Center Campus Site

Item #3 – City Hall

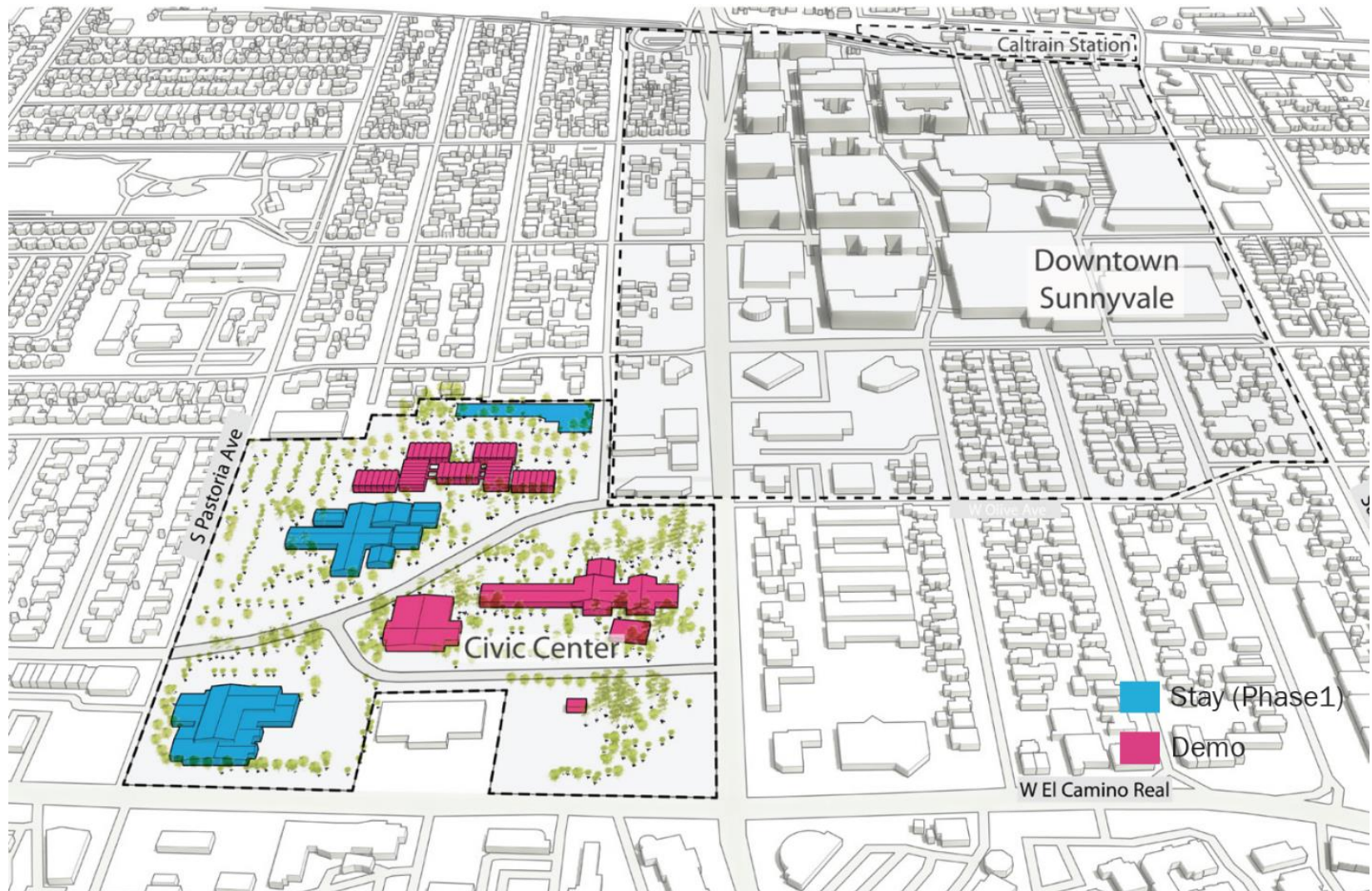
Item #4 – Emergency Operations Center (EOC)

Item #5 – Schedule

Project Overview



Accommodating Phase I



Agenda

Item #1 – Project Overview



Item #2 – Civic Center Campus Site

Item #3 – City Hall

Item #4 – Emergency Operations Center (EOC)

Item #5 – Schedule

Site Overview

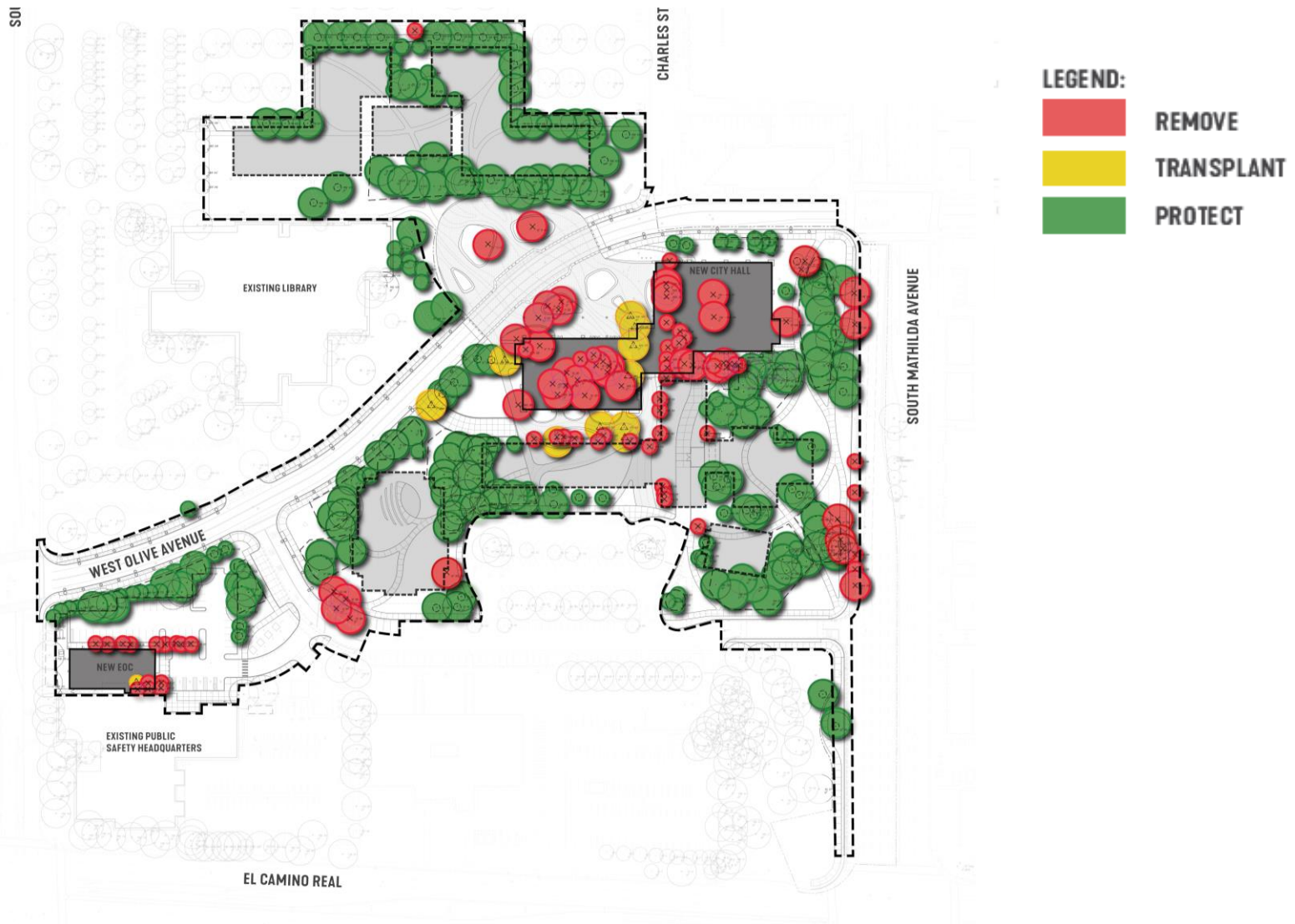


Site

- Protect & transplant trees wherever possible
- Utilize restorative, drought-tolerant plantings
- On-site rainwater management



Tree Strategies



City Hall

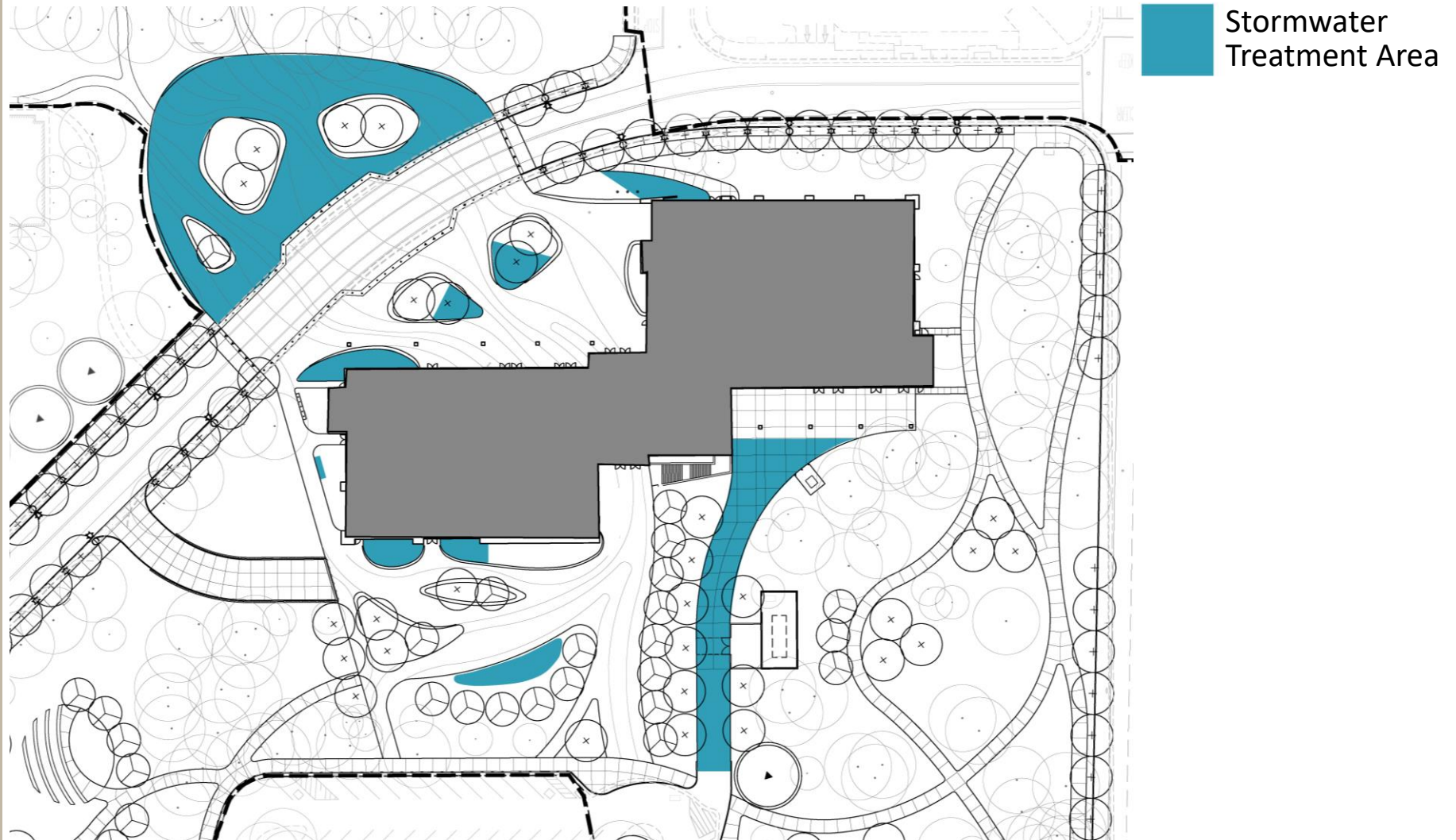
Trees retained



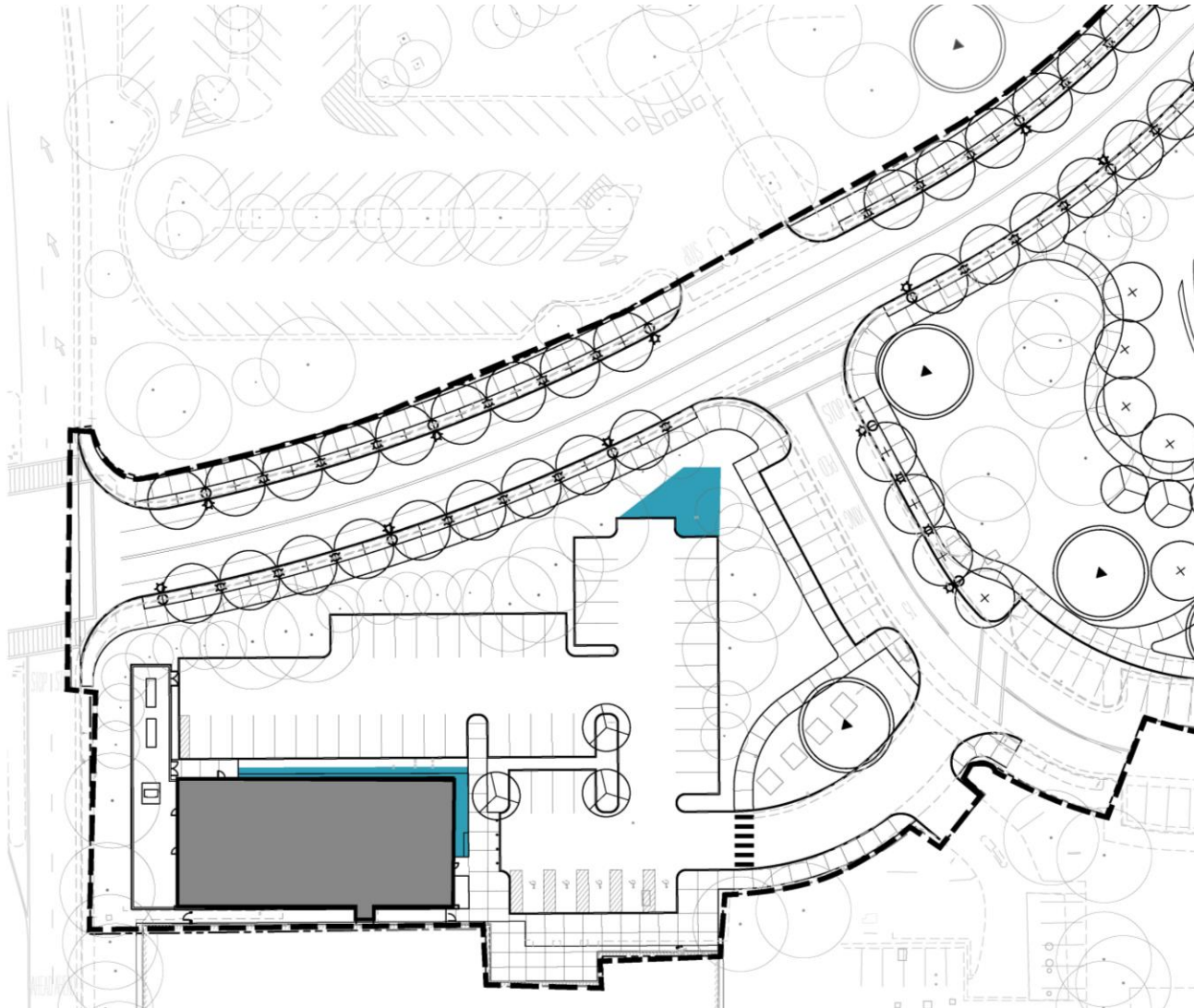
Restorative Drought-Tolerant Plantings



On-Site Rainwater Management

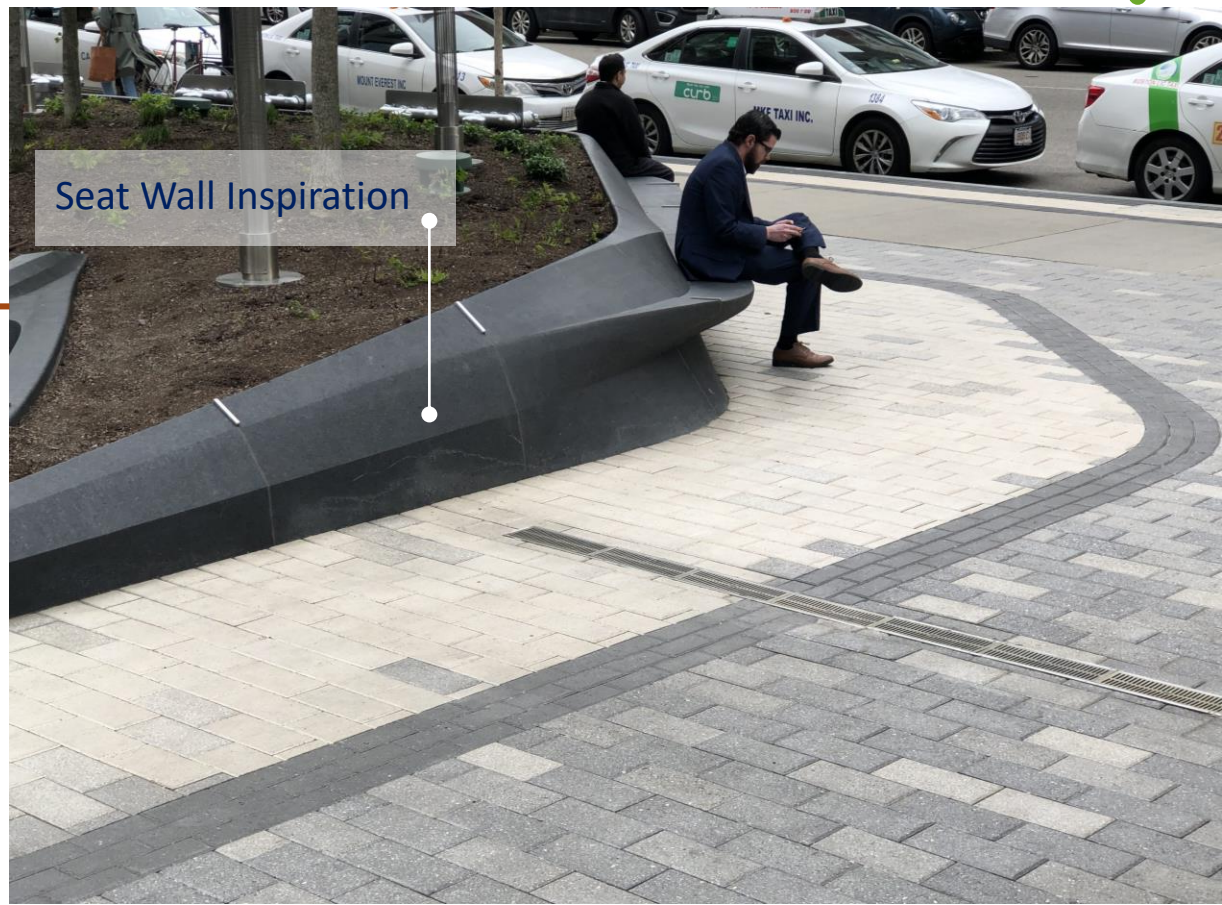
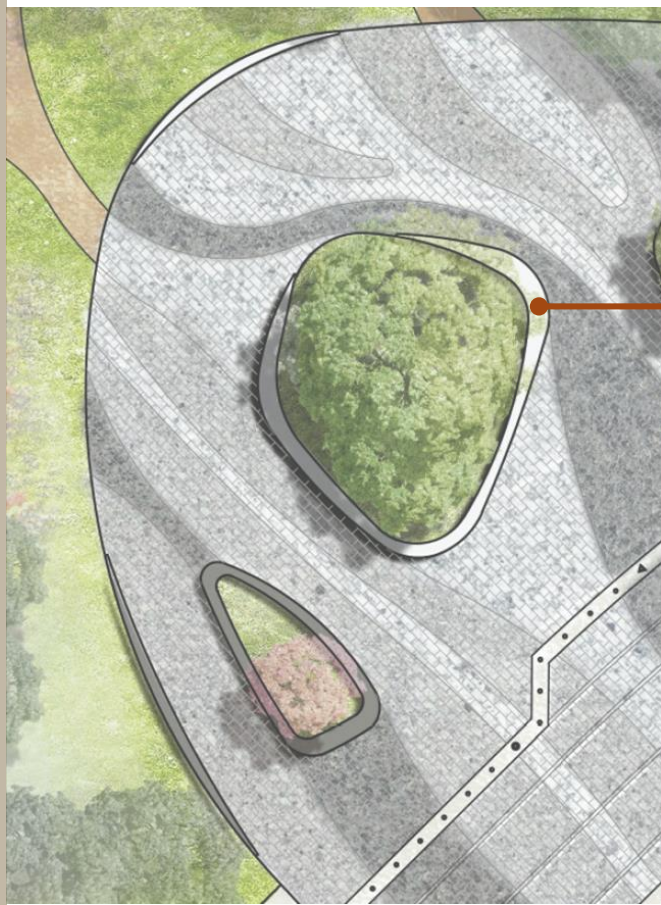


On-Site Rainwater Management

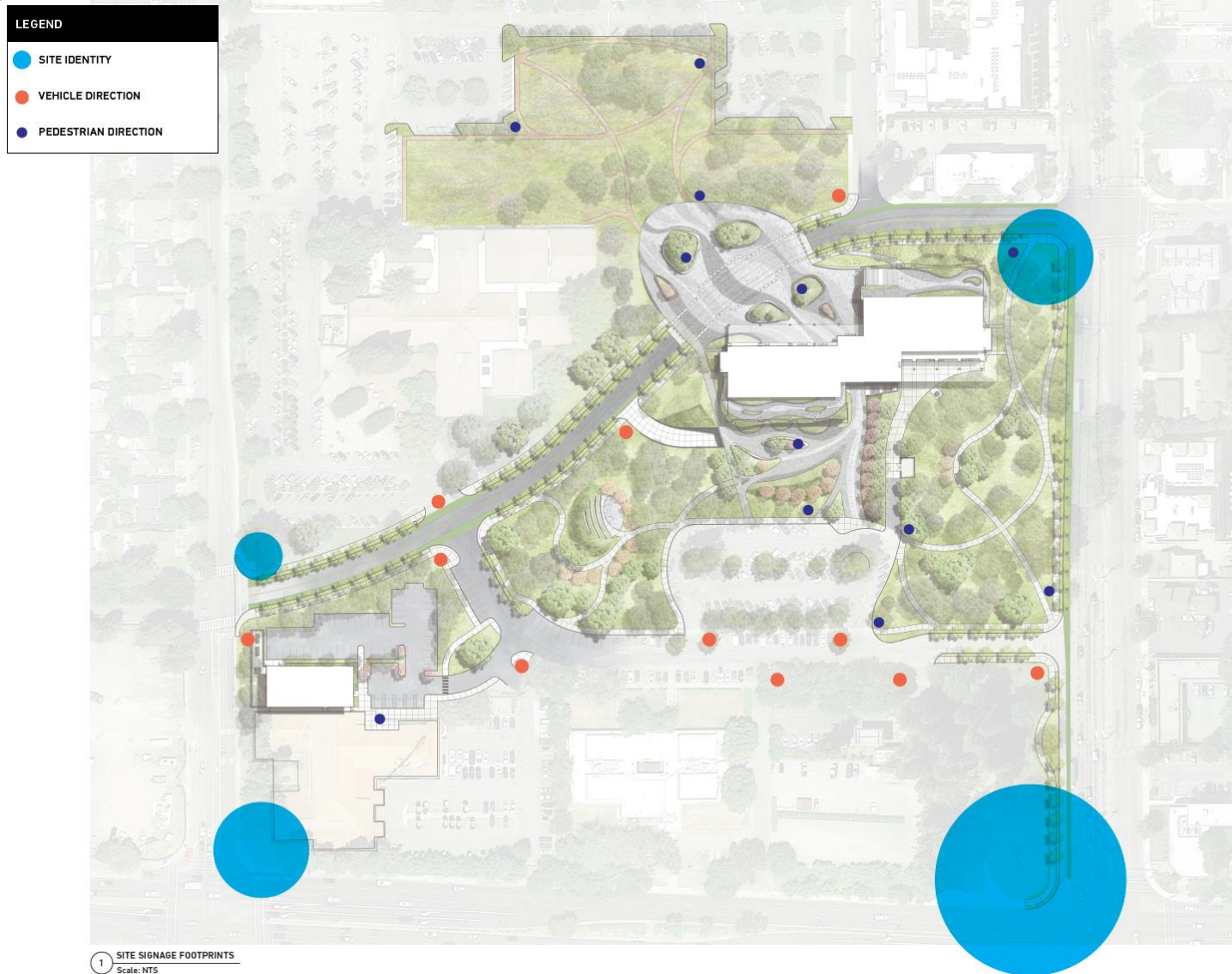


 Stormwater Treatment Area

Plaza & Landscape Design



Design - Site Signage




Design - Site Signage



Agenda

Item #1 – Project Overview

Item #2 – Civic Center Campus Site

 **Item #3 – City Hall**

Item #4 – Emergency Operations Center (EOC)

Item #5 – Schedule

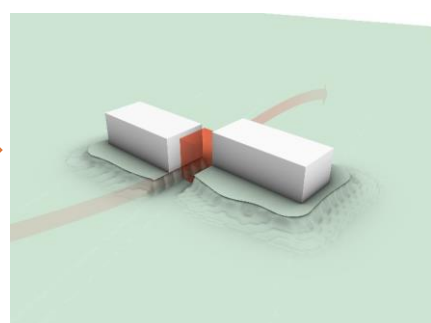
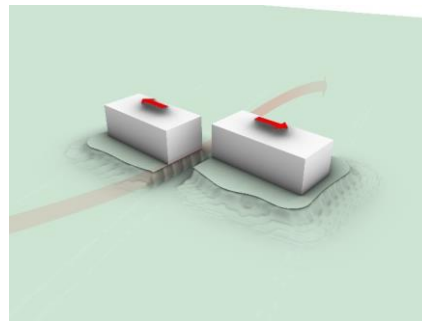
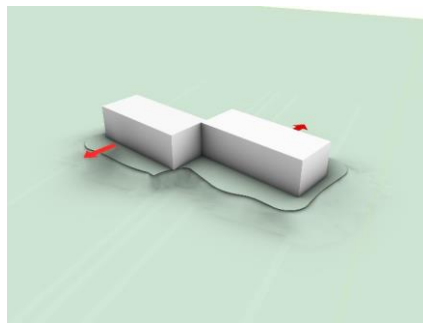
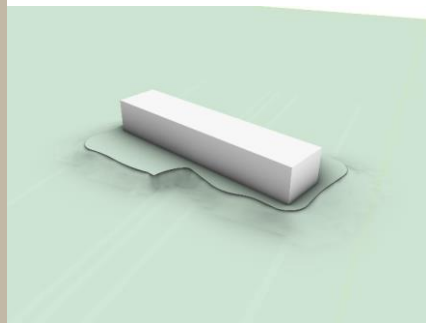
Design Approach

The Treehouse

Honor the Past + Look to the Future

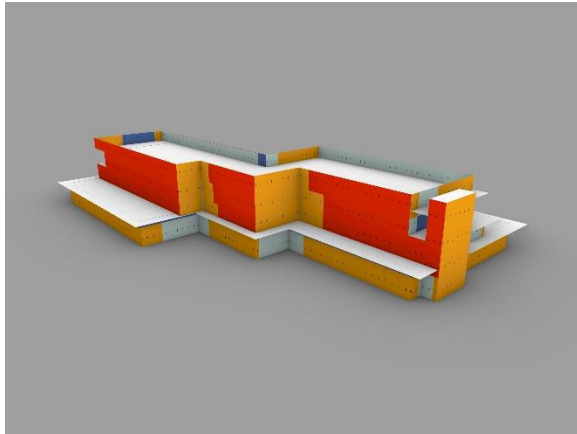


Shaping the Building for Two Front Doors



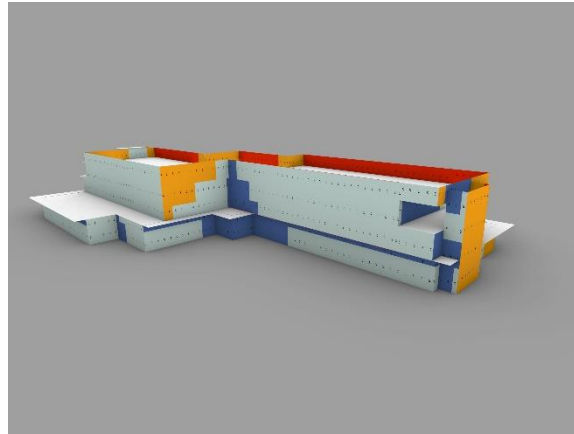
Performance-Driven Design

South Facade



Cumulative Solar Radiation without PV

North Facade



Cumulative Solar Radiation without PV

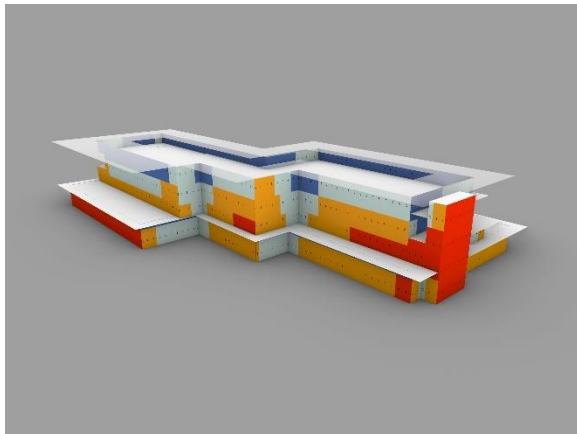
Legend

Red = Areas with most Solar Radiation

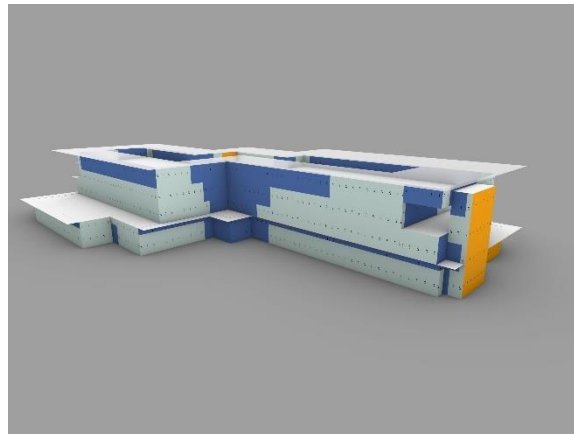
Yellow = Areas with much Solar Radiation

Light Blue = Areas with minimal Solar Radiation

Dark Blue = Areas with least amount of Solar Radiation



Cumulative Solar Radiation with PV



Cumulative Solar Radiation with PV

Benefits of Natural Materials

- Warmth of wood on the interior
- Carbon Sequestering
- Renewable



Sustainability

LEED Platinum

- Seeking all 10 points in Sustainable Sites
- Seeking all 18 points in Optimized Energy Performance
- All Electric

Net Zero

- Solar Panel Array
- Equipment Reduction/Modification Commitments
- Advanced energy metering & enhanced systems

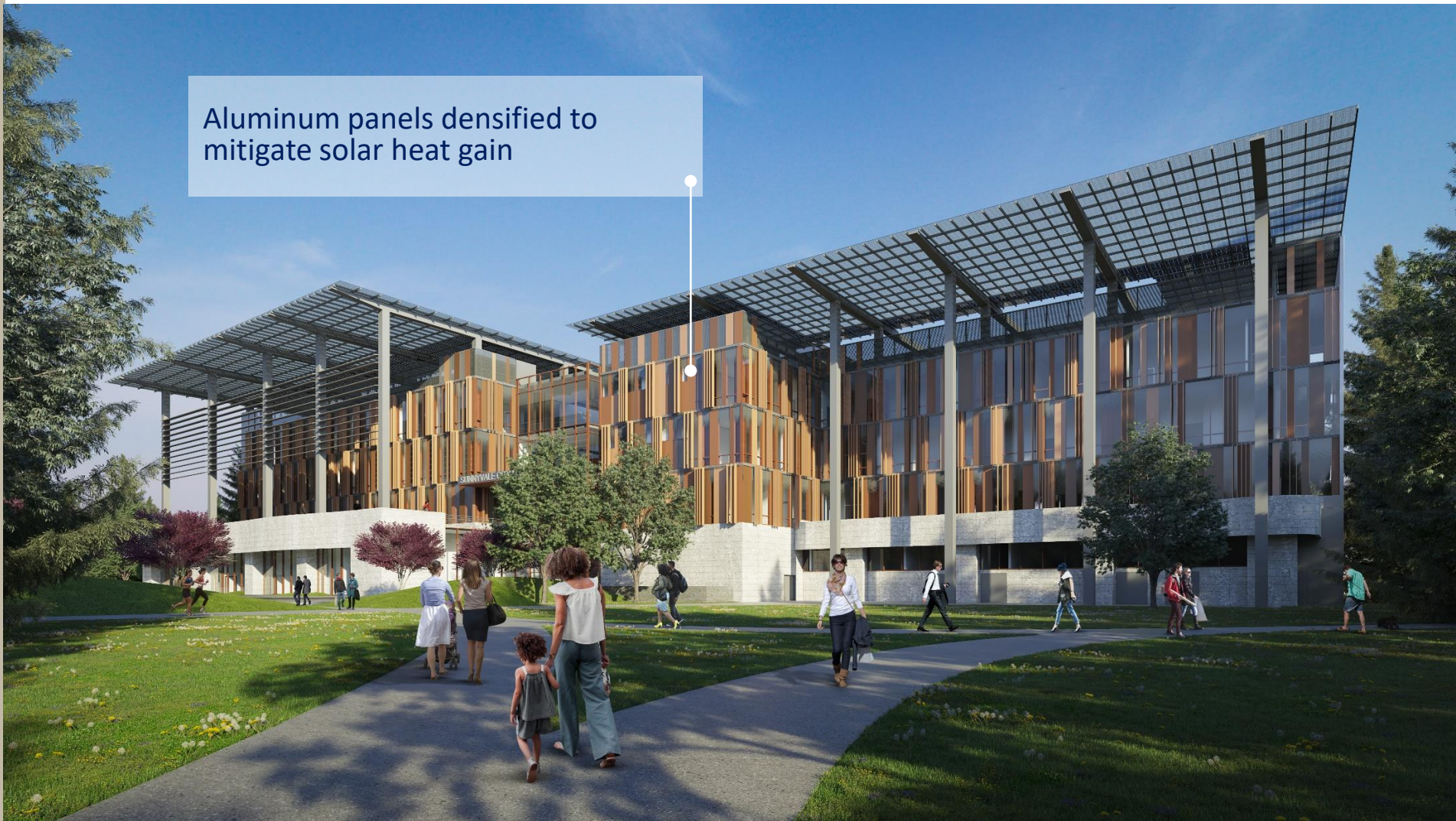
City Hall

Bi-facial & High Efficiency Solar
Panel Array = NZE



City Hall

Aluminum panels densified to
mitigate solar heat gain



City Hall



Aluminum tubing light foil

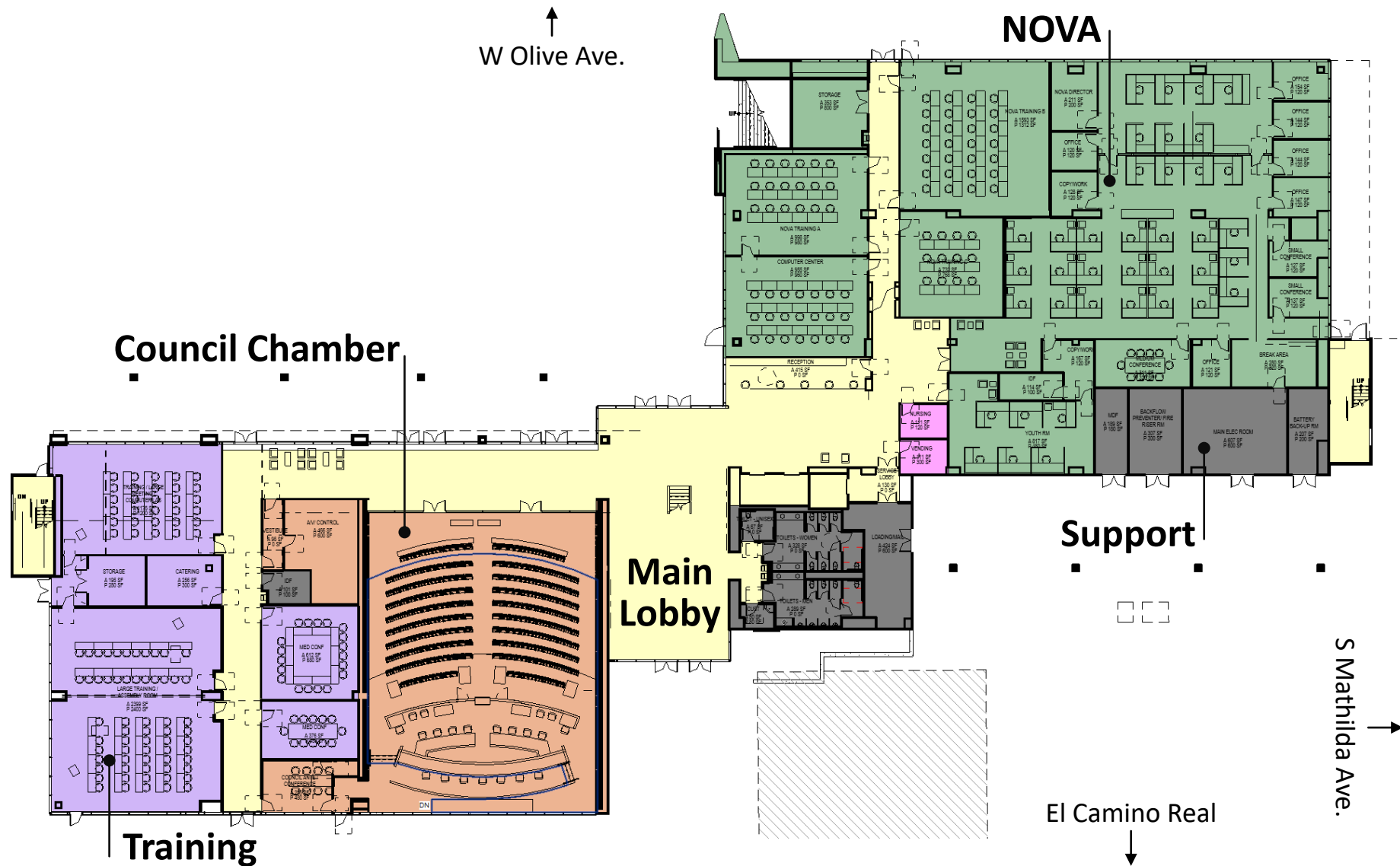
City Hall

Public green roof

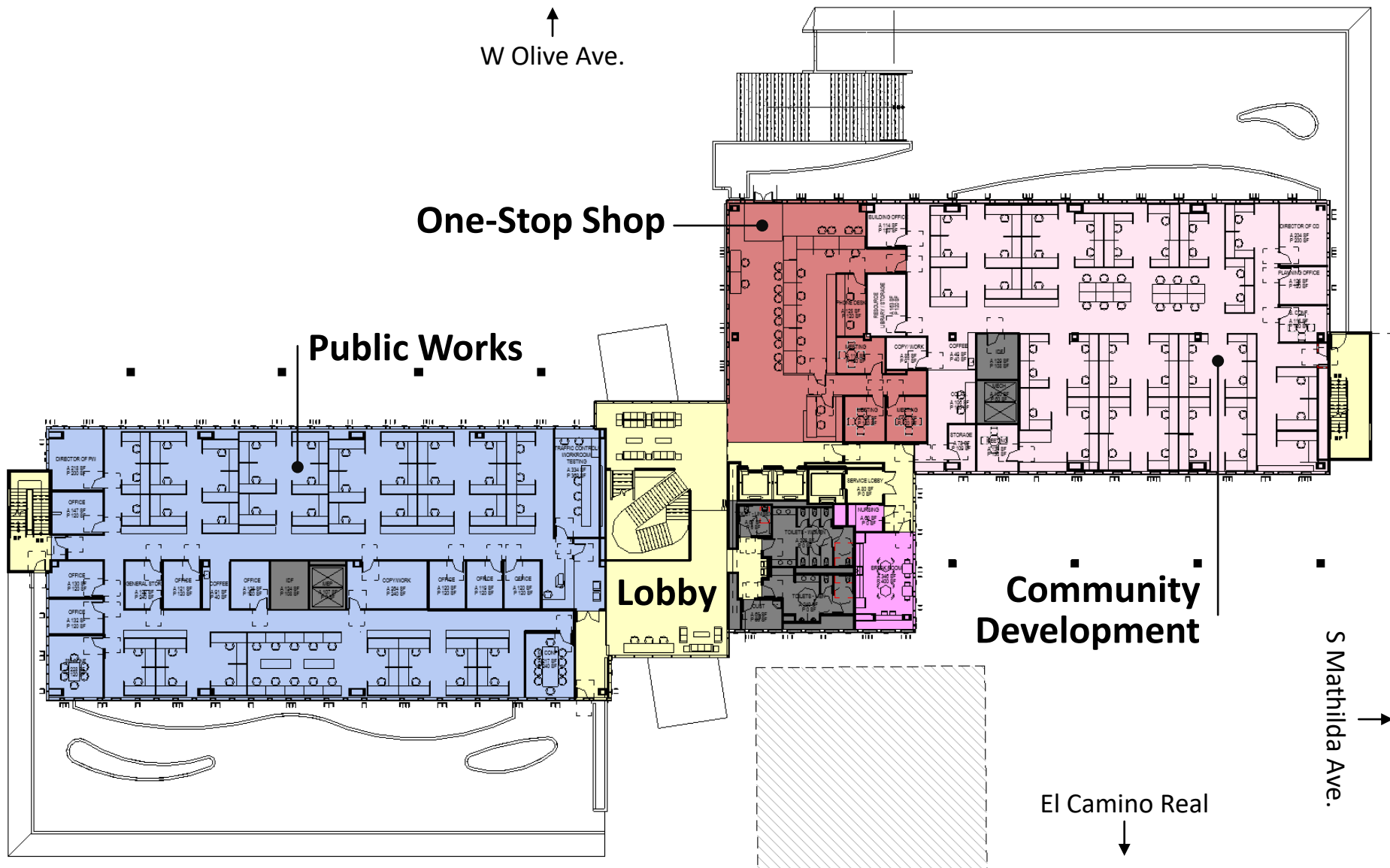
Bird-safe glazing throughout;
glazed area increased on north
façade to maximize daylight



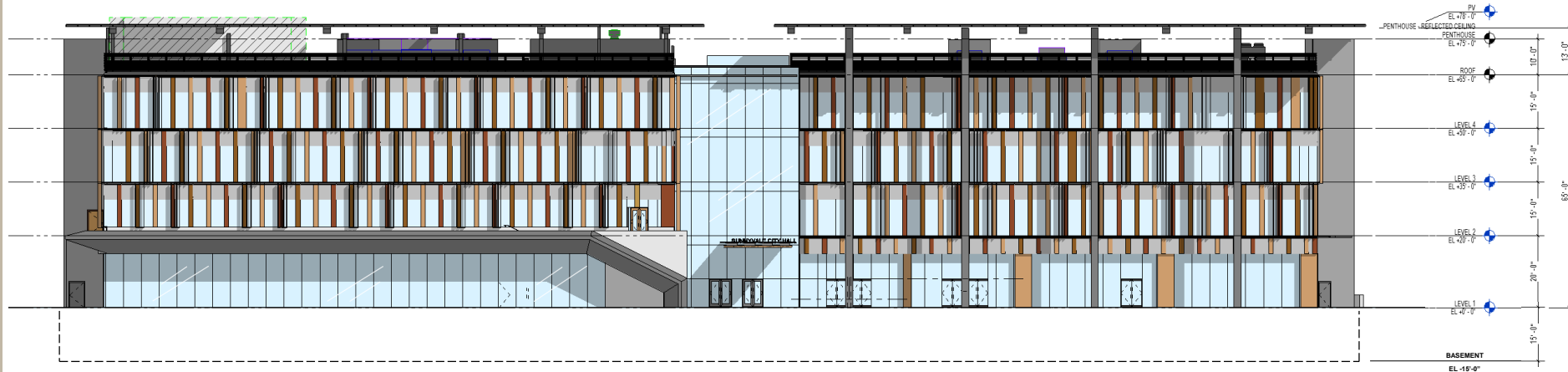
City Hall Level 1 Plan



City Hall Level 2 Plan



City Hall Exterior Elevations



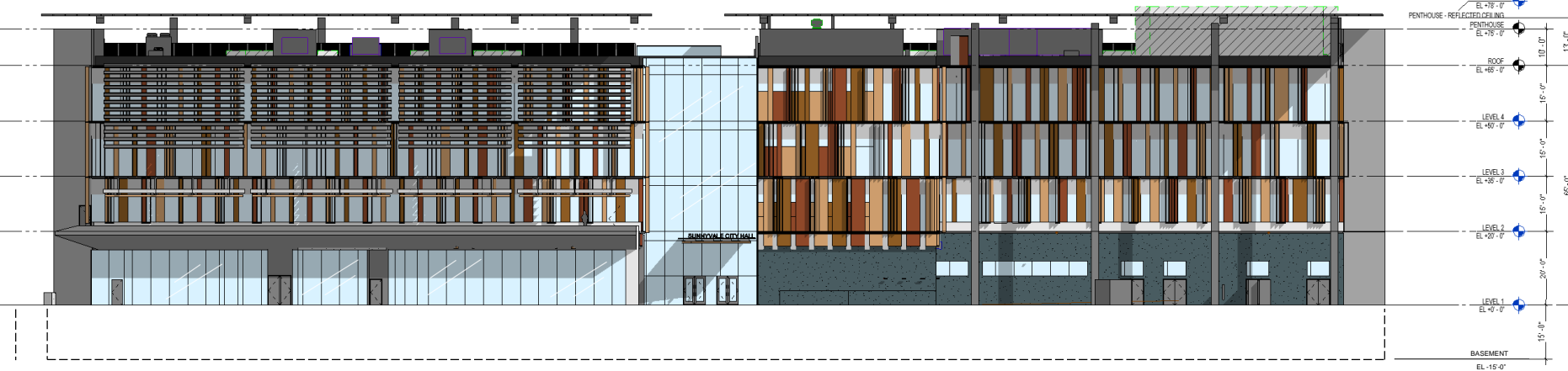
North Elevation



West Elevation

Note: Design to be updated after 7/25 design review

City Hall Exterior Elevations



South Elevation



East Elevation


Note: Design to be updated after 7/25 design review

Agenda

Item #1 – Project Overview

Item #2 – Civic Center Campus Site

Item #3 – City Hall

 **Item #4 – Emergency Operations Center (EOC)**

Item #5 – Schedule

Site Overview



EOC

Sustainable Design Highlights

LEED Gold Equivalent – V4 w/ V4.1 selective credits

- Efficient mechanical systems design
- Energy Metering
- Low Emitting Materials
- Air Quality Management
- Seeking all innovation points

Emergency Operations Center

Glazing screened with terra cotta baguettes to mitigate solar heat gain and glare



Emergency Operations Center

Precast Concrete Cladding



Emergency Operations Center

Green screen around emergency generators

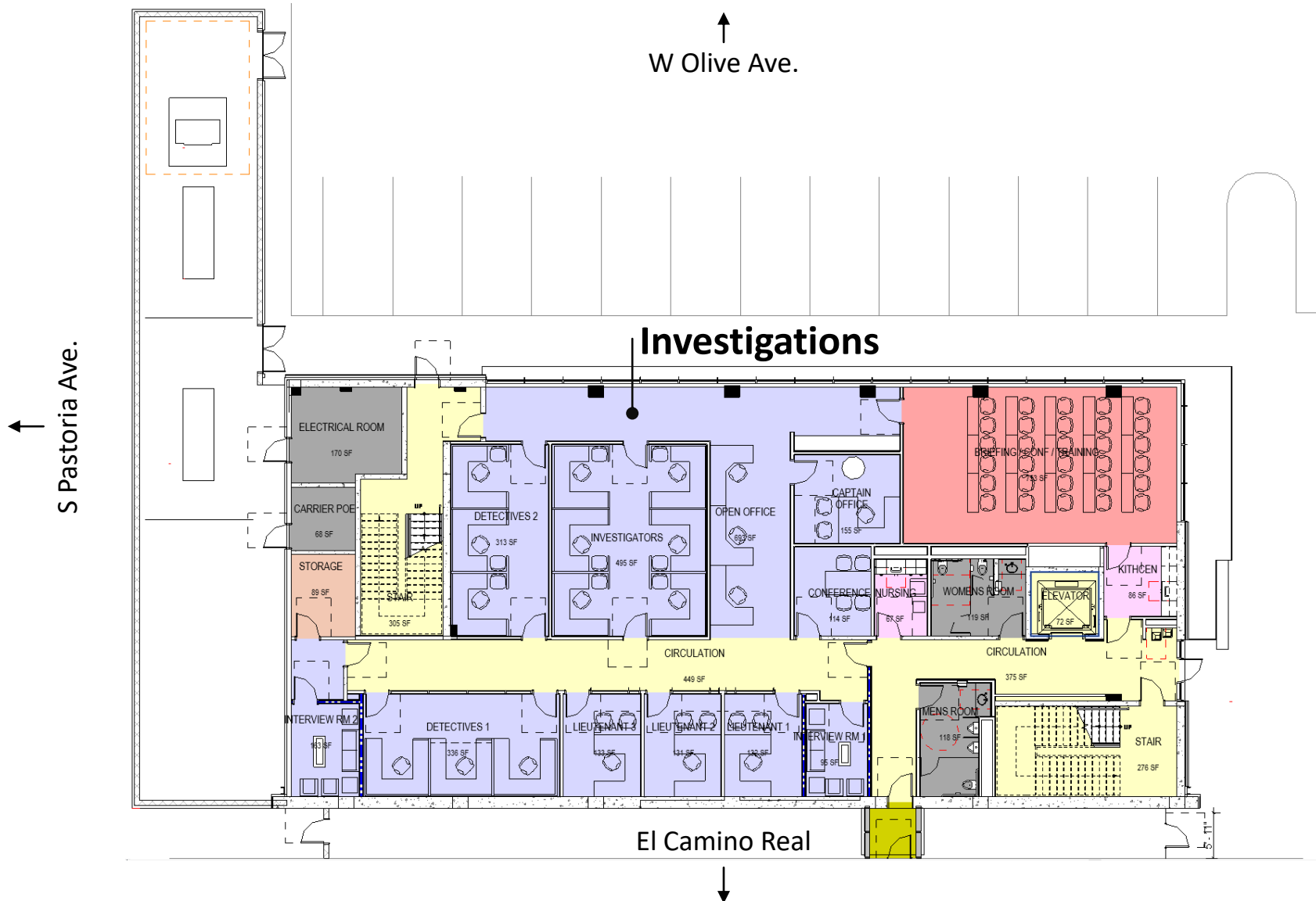


Emergency Operations Center

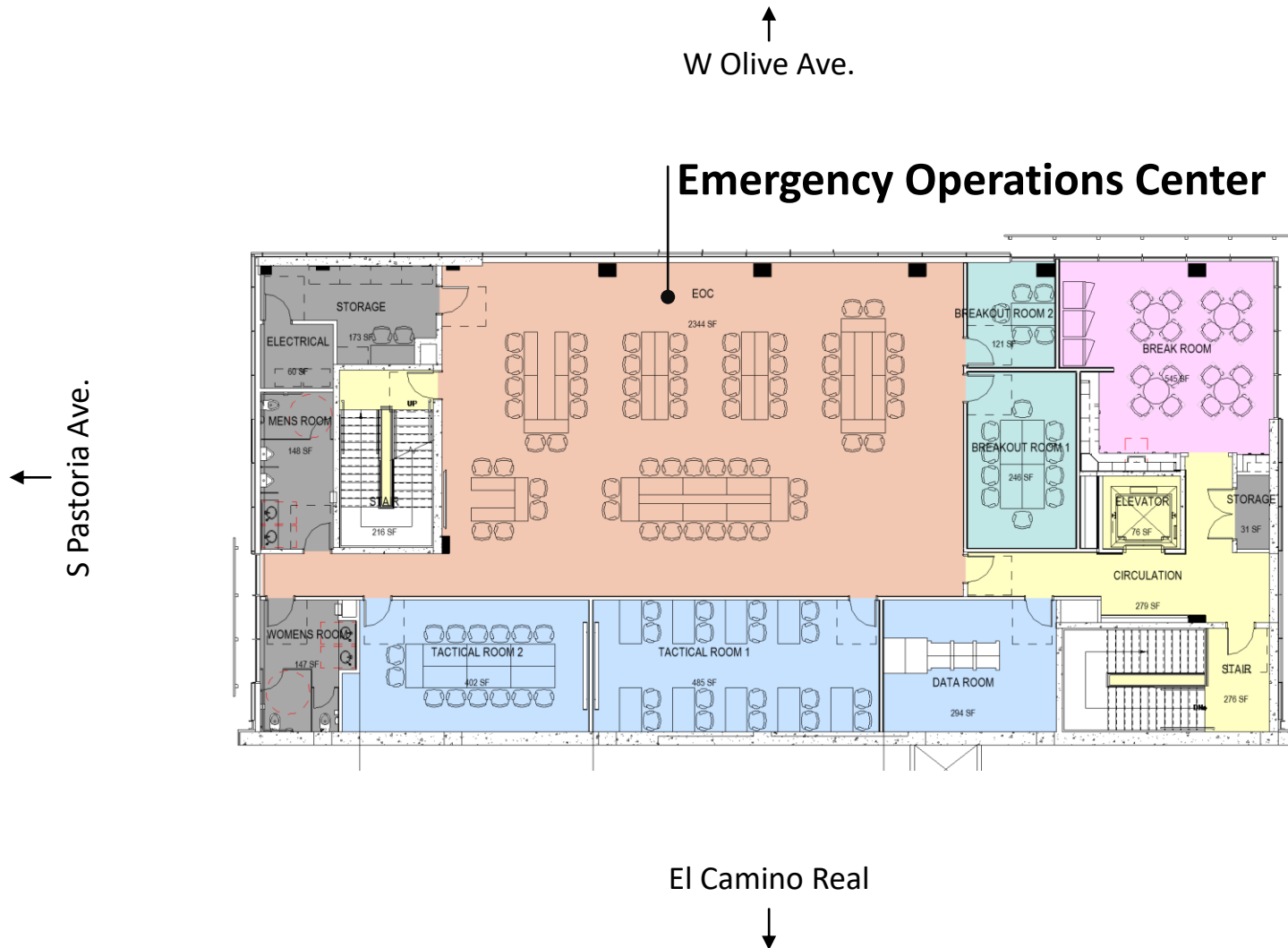


Terracotta (natural clay material)
rainscreen panels

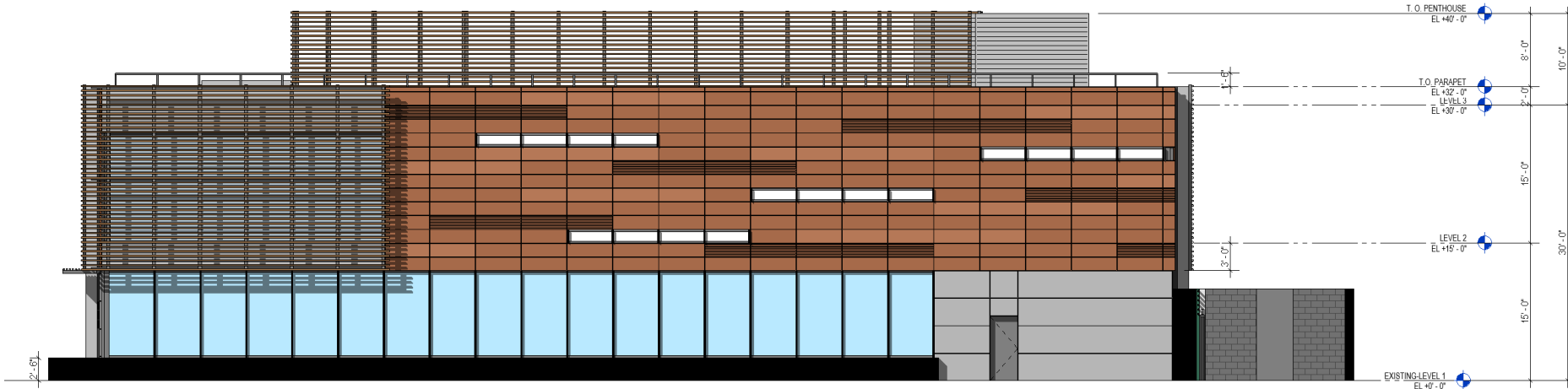
EOC Level 1 Plan



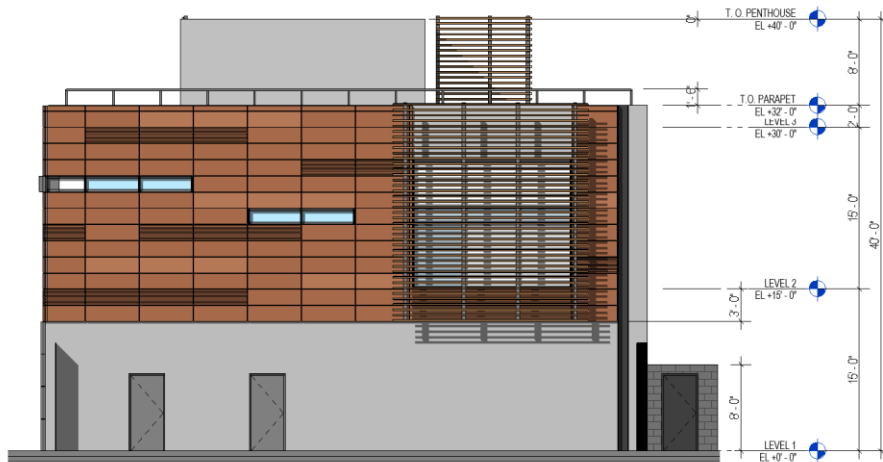
EOC Level 2 Plan



EOC Exterior Elevations

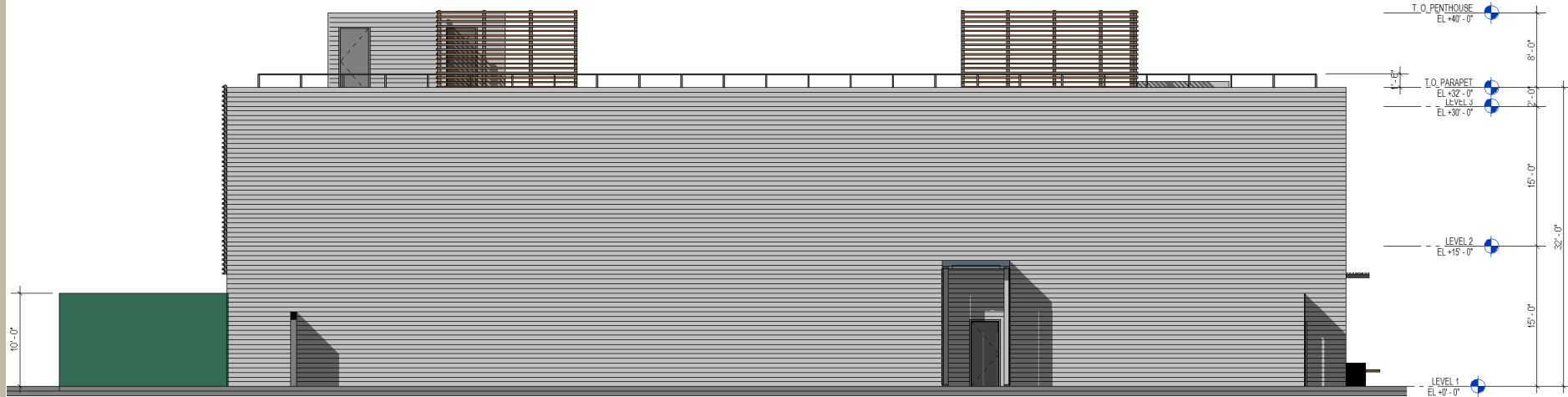


North Elevation

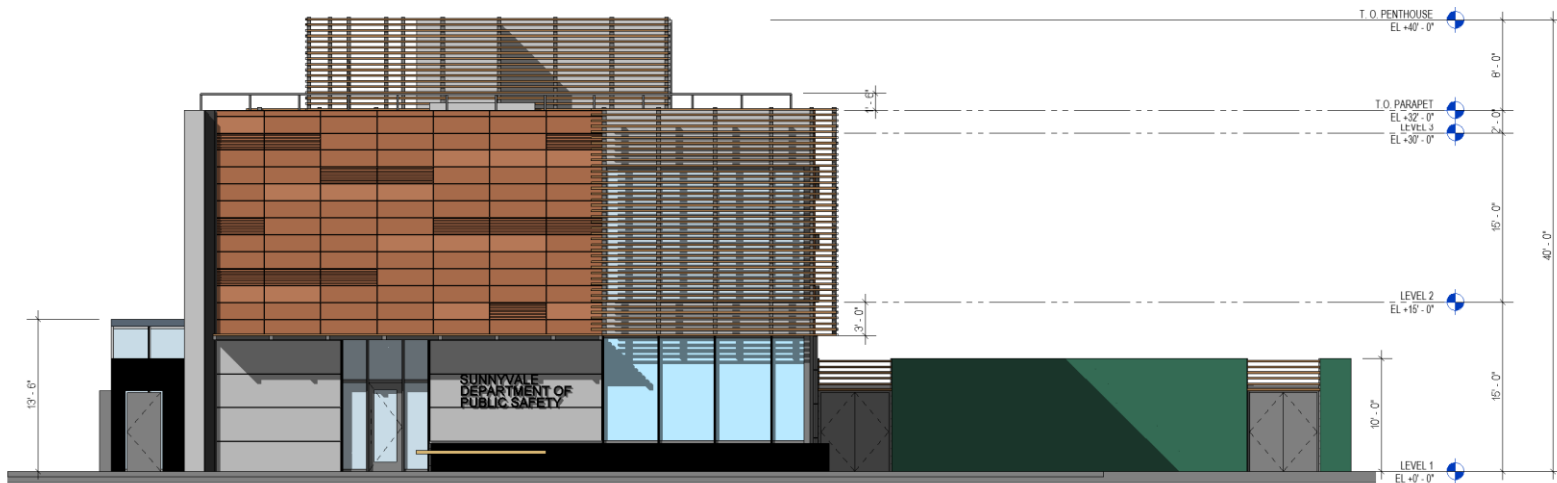


West Elevation

EOC Exterior Elevations



South Elevation



East Elevation

Agenda

Item #1 – Project Overview

Item #2 – Civic Center Campus Site

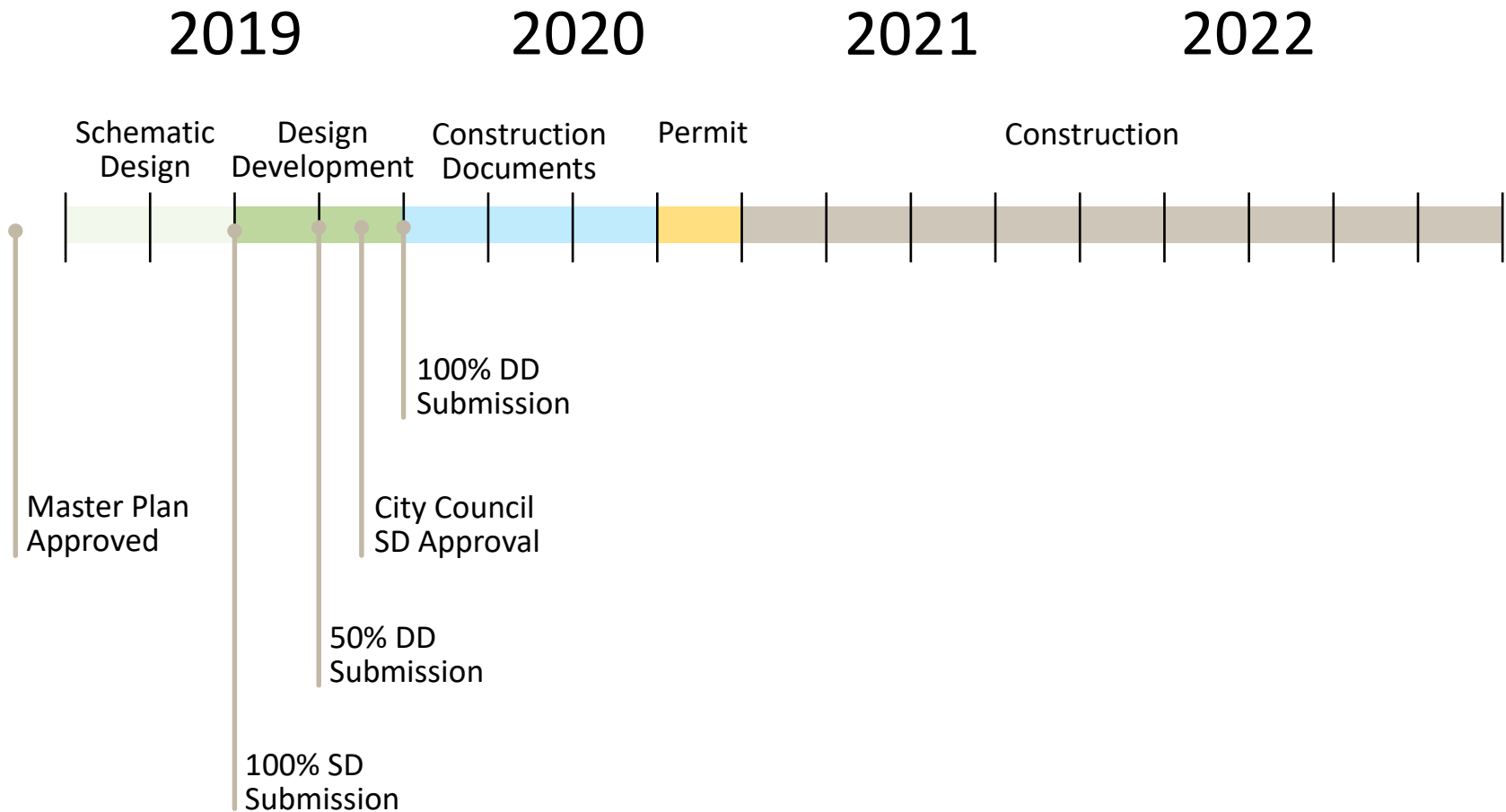
Item #3 – City Hall

Item #4 – Emergency Operations Center (EOC)



Item #5 – Schedule

Design Milestone Events



Questions & Comments

