



Sunnyvale

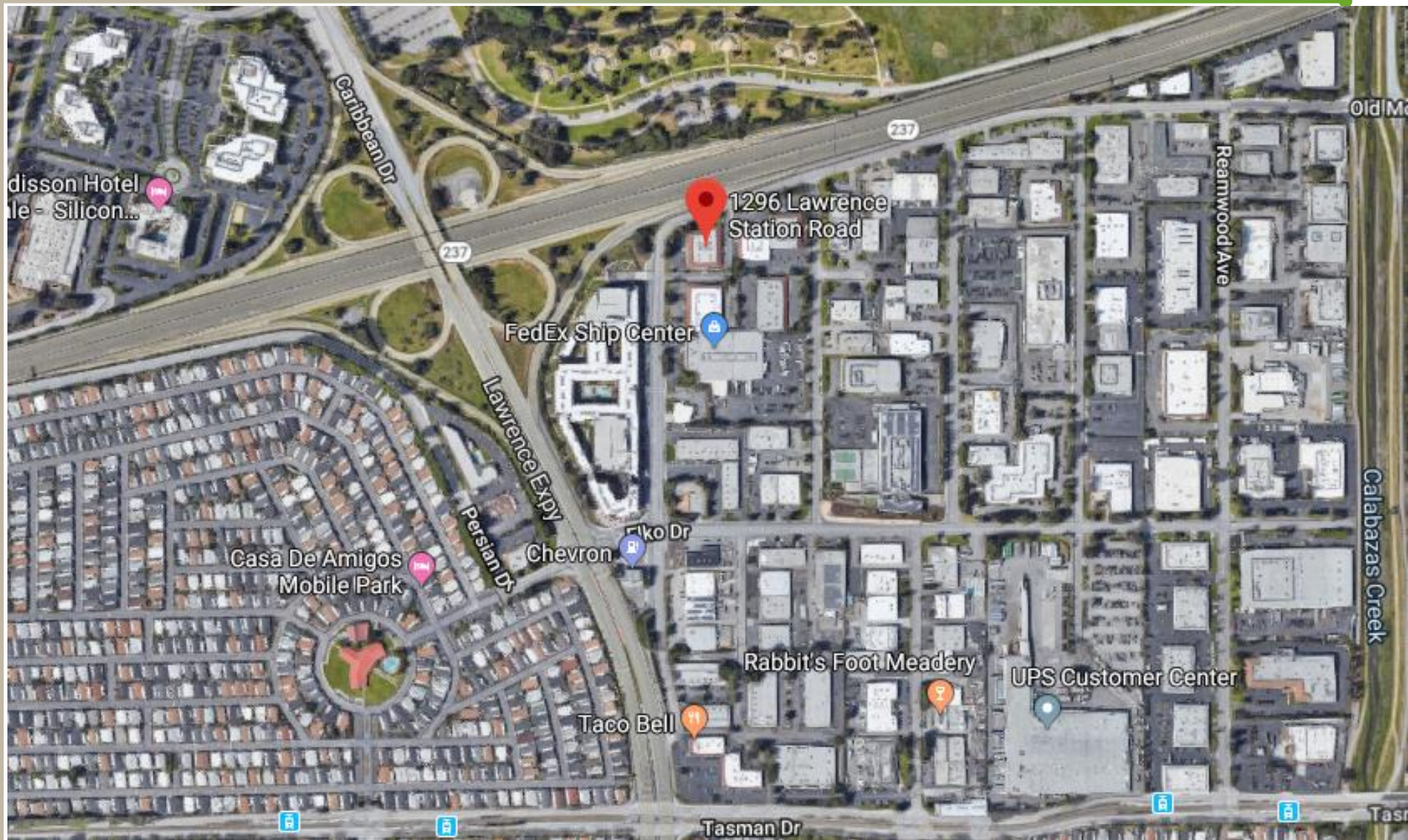
1296 Lawrence Station Road
2017-8060

Kelly Cha, Associate Planner
Planning Commission, August 12, 2019

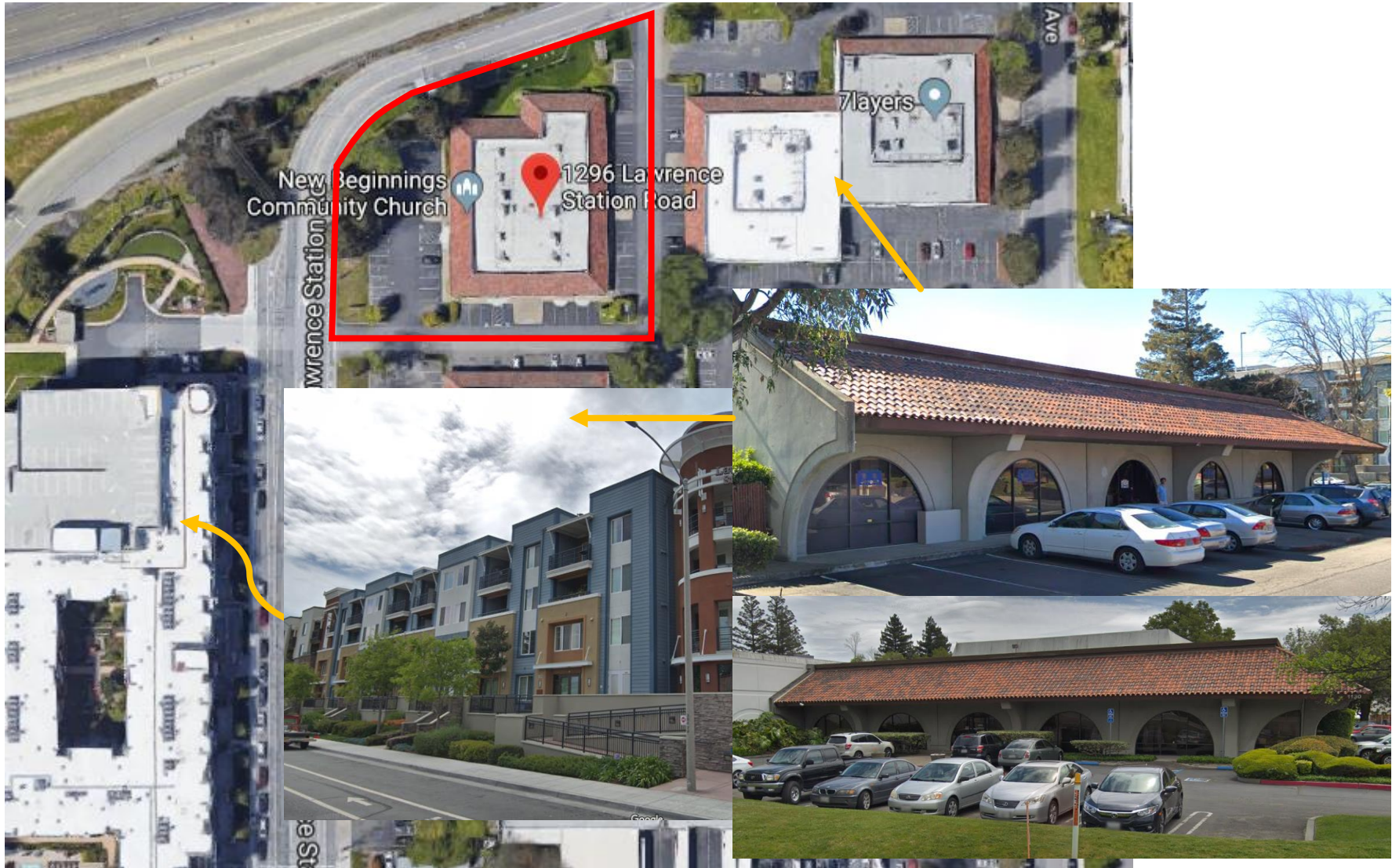
Proposed Project



Existing Site Condition



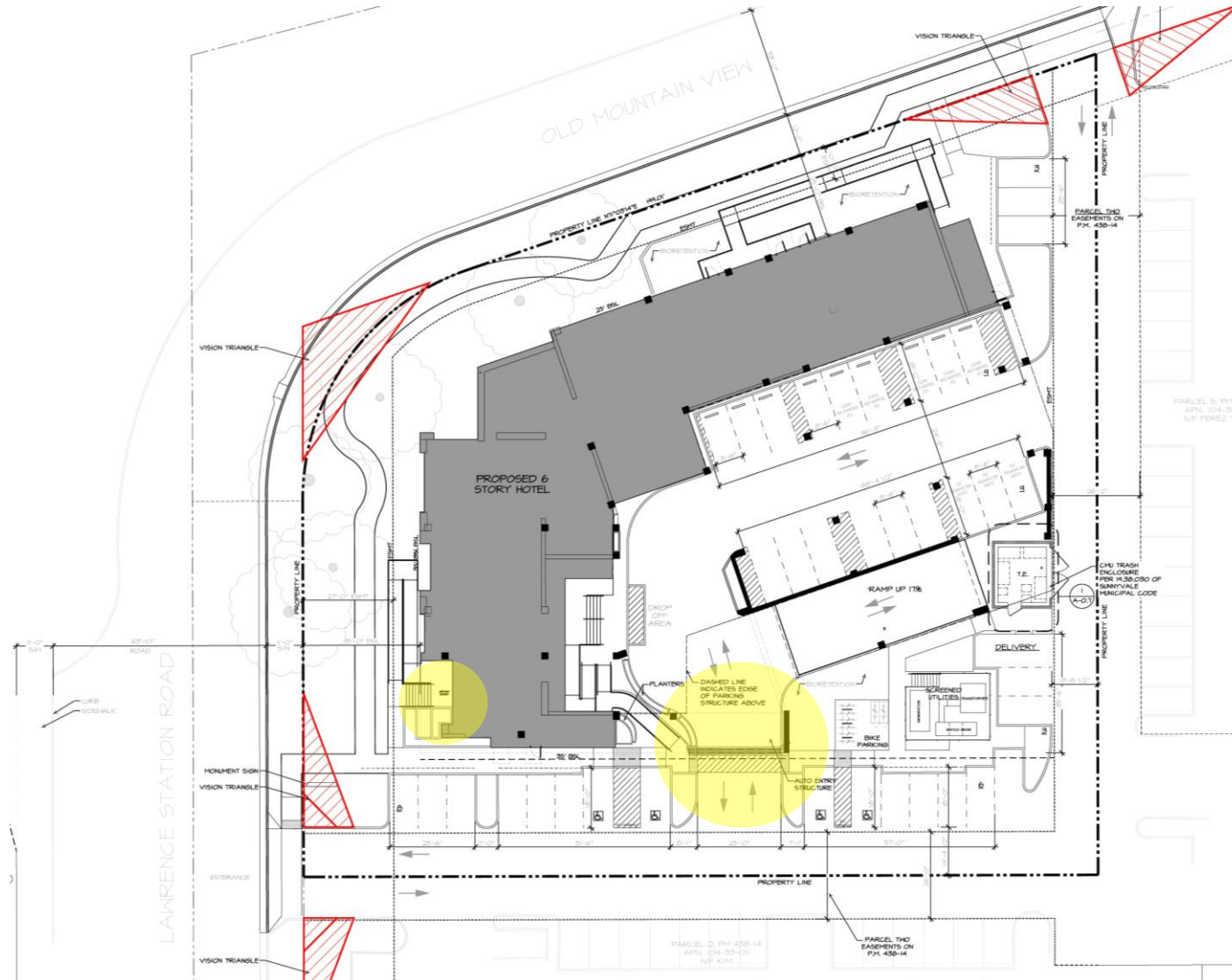
Existing Site Condition



Existing Site Condition



Main Entrance



Main Entrance



Rear View



Rear View



Rear View



Pedestrian Ramps



Pedestrian Ramps

