



# CARIBBEAN CAMPUS

OCTOBER 28, 2019  
MOFFETT PARK, SUNNYVALE, CA.  
PLANNING COMMISSION STUDY SESSION #2

Google

BIG

POINTENERGY  
INNOVATIONS



SARES | REGIS

kpff

LOISOS + UBBELOHDE

DEVCON

Holmes

CLIVE WILKINSON  
architects

OLIN



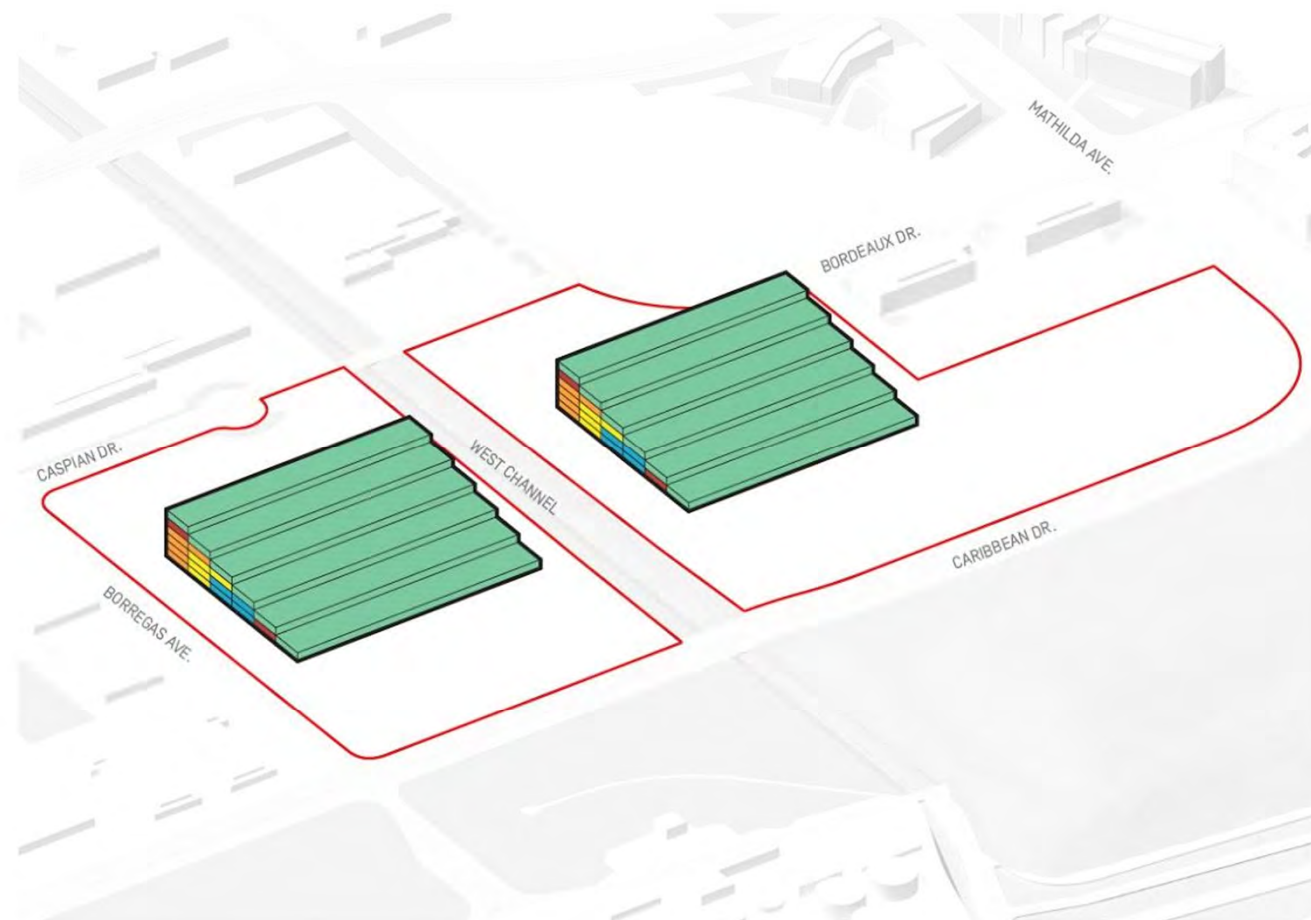




100 / 200 - AERIAL



# BUILDING CONCEPT

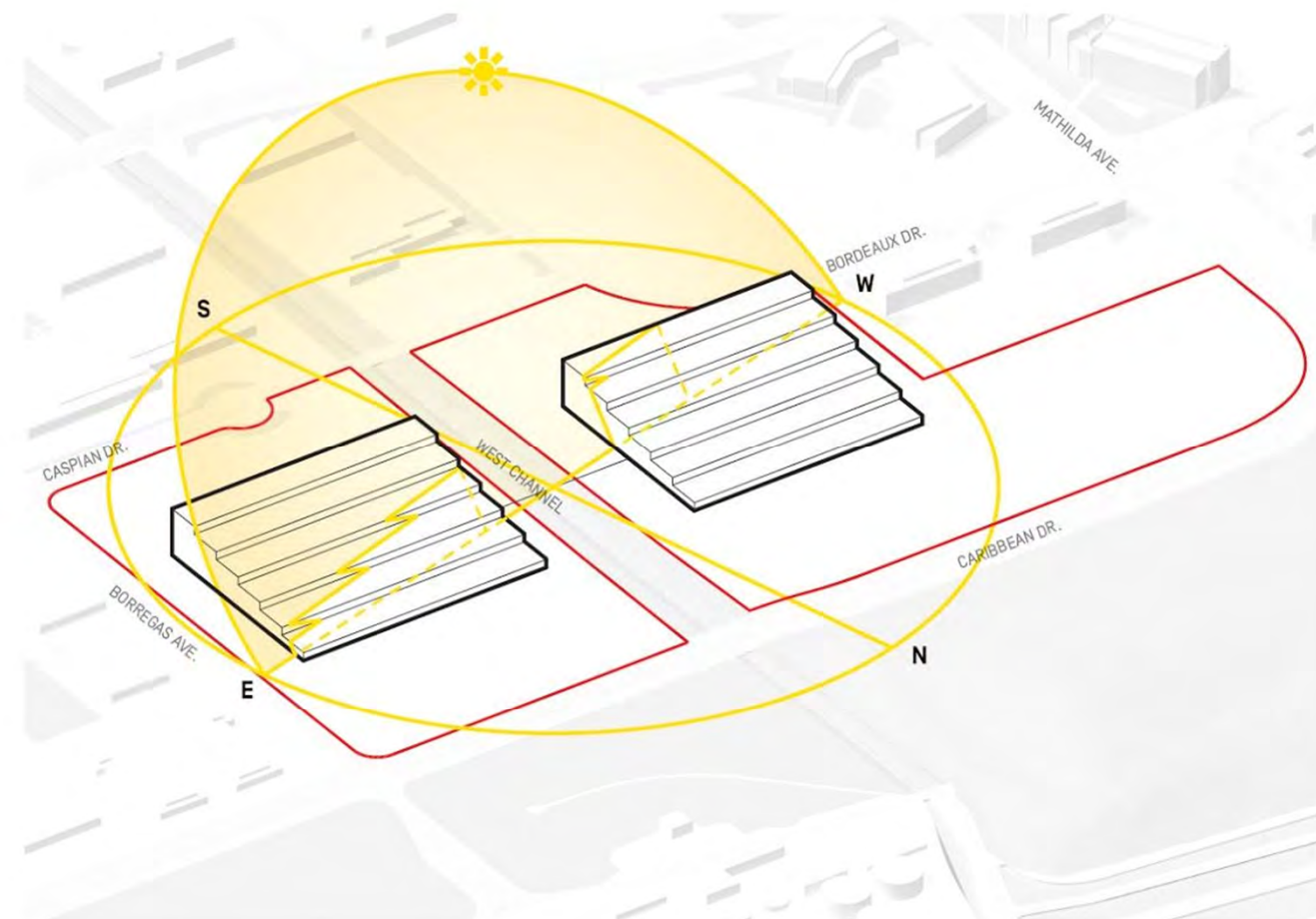


### **CASCADING WORK SPACE**

THE BUILDING IS ORGANIZED AS A SERIES OF OVERLAPPING BARS  
CREATING A CONNECTED, CASCADING WORKSPACE.

### **CONCEPT**





### OPTIMIZED DAYLIGHTING

WORK SPACES ARE NORTH FACING TO TAKE ADVANTAGE OF OPTIMAL ORIENTATION. CLERESTORIES AND SKYLIGHTS AT EVERY LEVEL DISTRIBUTE NATURAL LIGHT EVENLY TO THE DESK SPACE.

### CONCEPT



#### VIEWS WITHOUT GLARE

WITHOUT THE NEED FOR BLINDS OR EXTERNAL SUN SHADING, THE GENEROUS CLERESTORIES AT EACH LEVEL OF THE NORTH-FACING WORK SPACE PROVIDE UNINTERRUPTED VIEWS TO THE LANDSCAPE AND THE BAY BEYOND.

#### CONCEPT

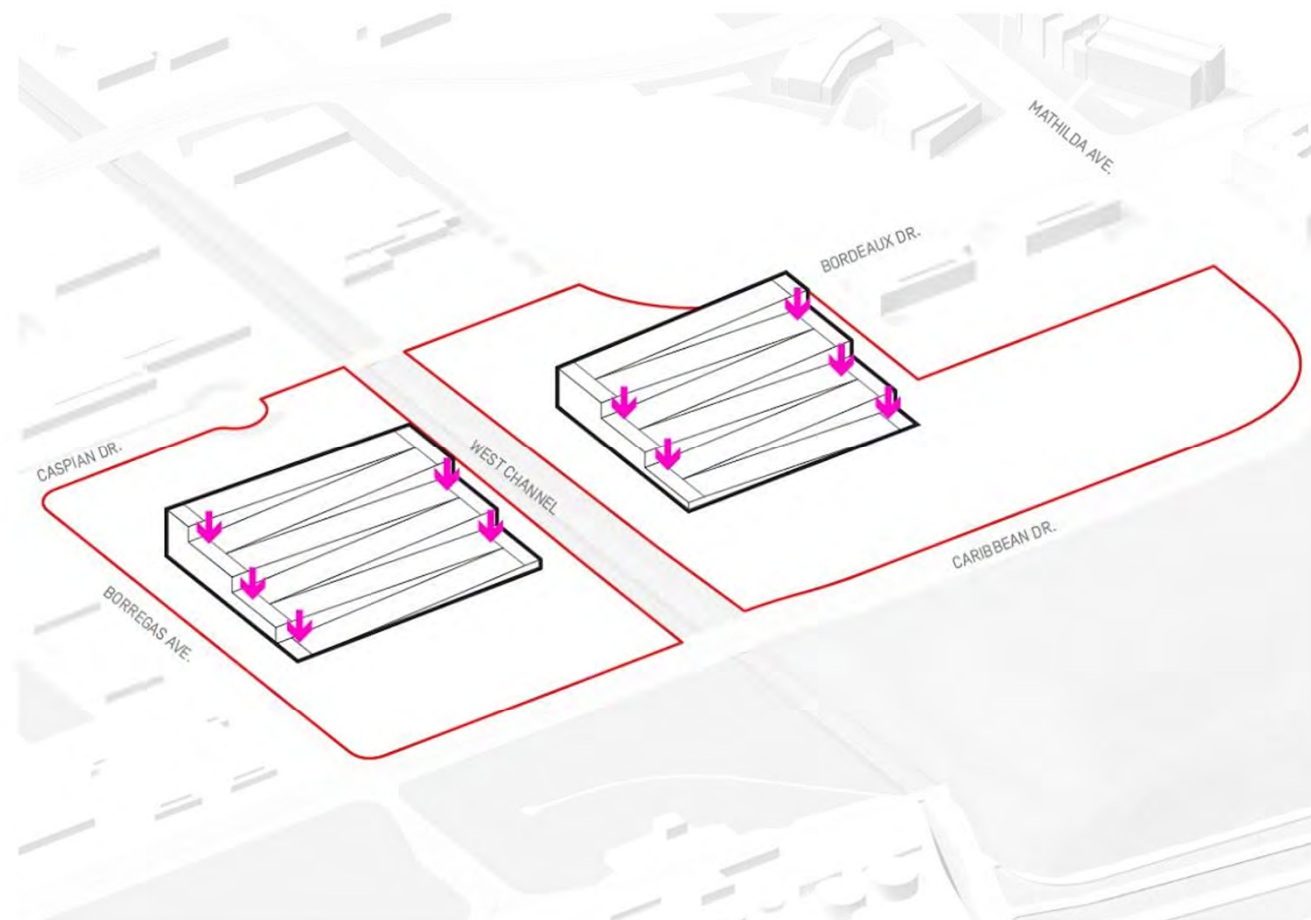




### PORCH

THE PORCH ON THE SOUTH SIDE OF THE BUILDINGS ARE FORMED BY CARVING OUT THE DARKEST PORTION OF EACH FLOOR PLATE, IMPROVING DAYLIGHT PENETRATION INTO THE BUILDING.

### CONCEPT



### ACCESSIBLE ROOF

BY PULLING DOWN THE ENDS OF EACH BAR, THE ROOF BECOMES AN ACCESSIBLE SURFACE, LINKING ALL LEVELS OF THE BUILDING.

### CONCEPT





#### ROOFTOP STAIR

A PAIR OF EXTERIOR STAIRS PROVIDES A CONVENIENT SHORTCUT BETWEEN LEVELS, AND SERVES AS AN EGRESS ROUTE. FOR EACH BUILDING, THE STAIR LOCATION IS OPTIMIZED TO MEET TRAVEL DISTANCE REQUIREMENTS FROM THE CENTER OF EACH ROOF.

#### CONCEPT



#### **DIRECT CONNECTION TO NATURE**

EACH LEVEL CONNECTS DIRECTLY TO A TERRACE AND LANDSCAPE ROOF.  
THIS PROVIDES A SEAMLESS LINK BETWEEN WORK SPACE AND NATURE.

#### **CONCEPT**





### SEAMLESS GREEN EXPERIENCE

THE LANDSCAPE TRANSITION UP THE ROOF, LINKING THE TWO BUILDINGS  
AND HIGHLIGHTING THE CAMPUS AS AN EXTENSION OF ITS SITE.

## CONCEPT

BUILDING 100





100 BLDG 100 - GROUND  
100 BLDG 100 - GROUND





**BLDG 100 - WEST VIEW - OCTOBER 2019**





**100 - WEST ENTRY BUILDING 100**





**100 - WEST ENTRY BUILDING 100**





100 - EAST VIEW



BUILDING 200





1

200 - PORCH VIEW BUILDING 200 WITH LANDSCAPE





**200 - EAST VIEW OF BUILDING 200**





**200 - EAST VIEW OF BUILDING 200**





**200 - EAST ENTRY BUILDING 200**





200 - WEST VIEW BUILDING 200



# PARKING GARAGE & UTILITY BUILDING





**UTILITY BUILDING & PARKING GARAGE - NORTH VIEW FROM CARIBBEAN - JUNE 2018**





**UTILITY BUILDING AND PARKING GARAGE - NORTH VIEW FROM CARIBBEAN - OCTOBER 2019**





**PARKING GARAGE - SOUTH EAST VIEW FROM BUILDING 200 - JUNE 2018**





**PARKING GARAGE - SOUTH EAST VIEW FROM BUILDING 200 - OCTOBER 2019**





**UTILITY BUILDING AND PARKING GARAGE - EAST FAÇADE - OCTOBER 2019**



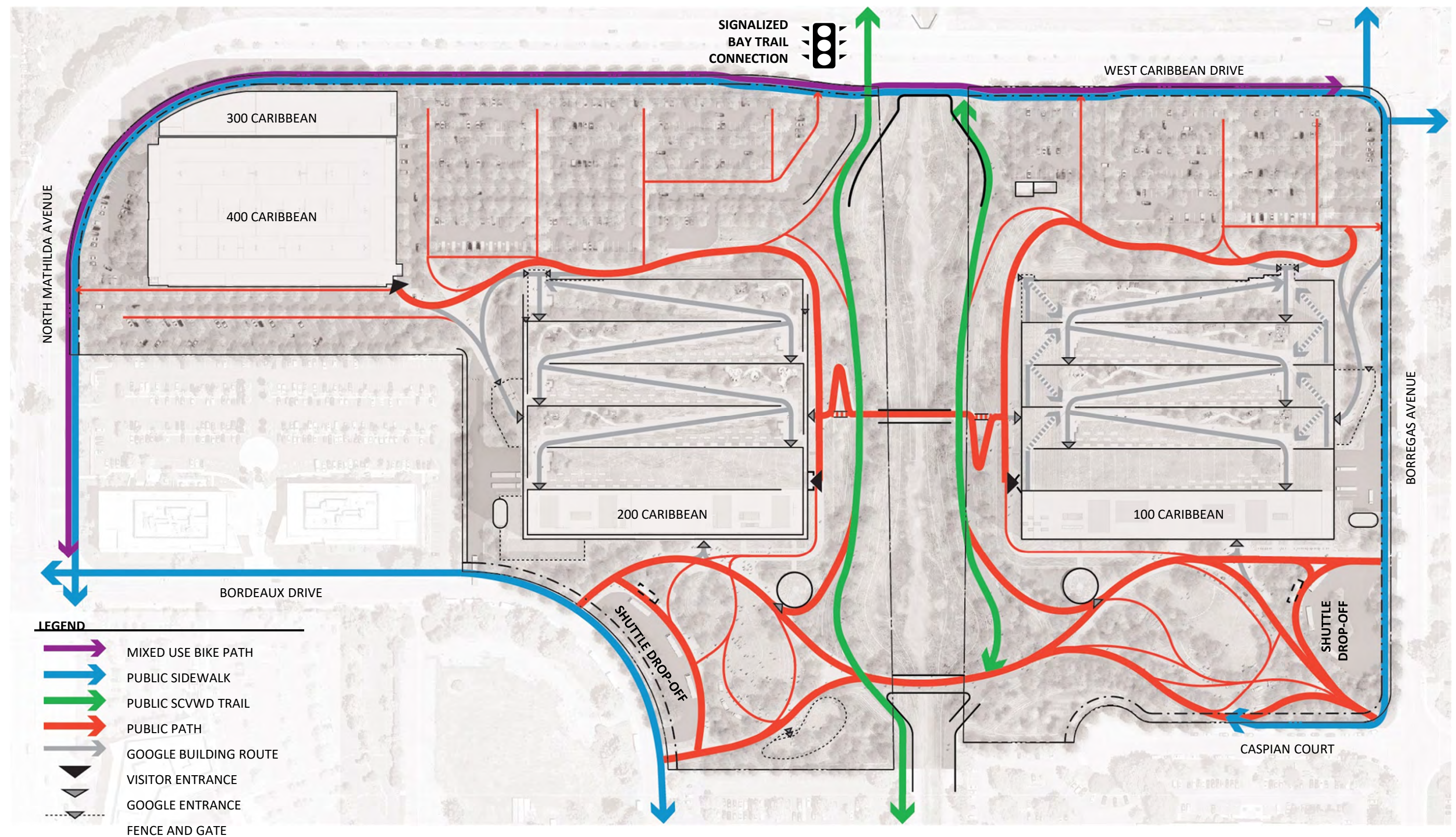
# LANDSCAPE





**SITE PLAN**





**SITE CIRCULATION**





100 - GROUND NORTH VIEW