



Sunnyvale

421 E. Washington Avenue
2017-8019

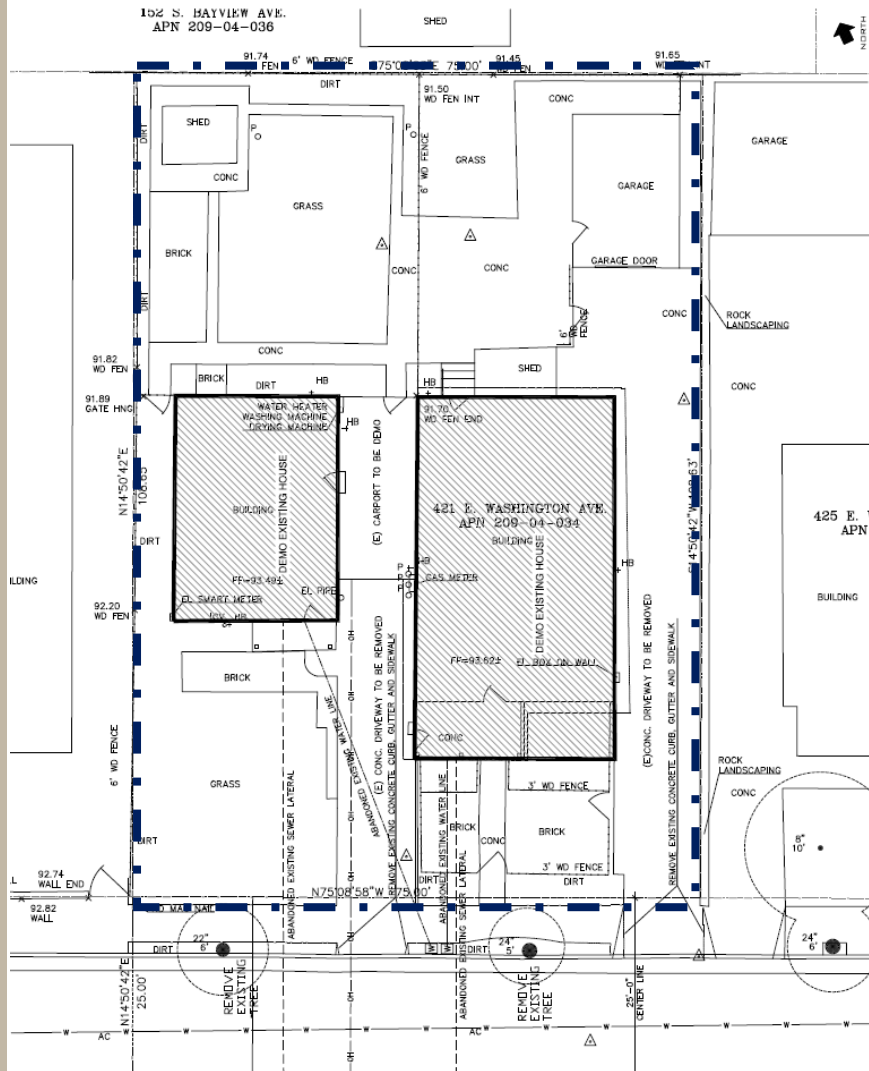
Cindy Hom

Planning Commission, October 28, 2019

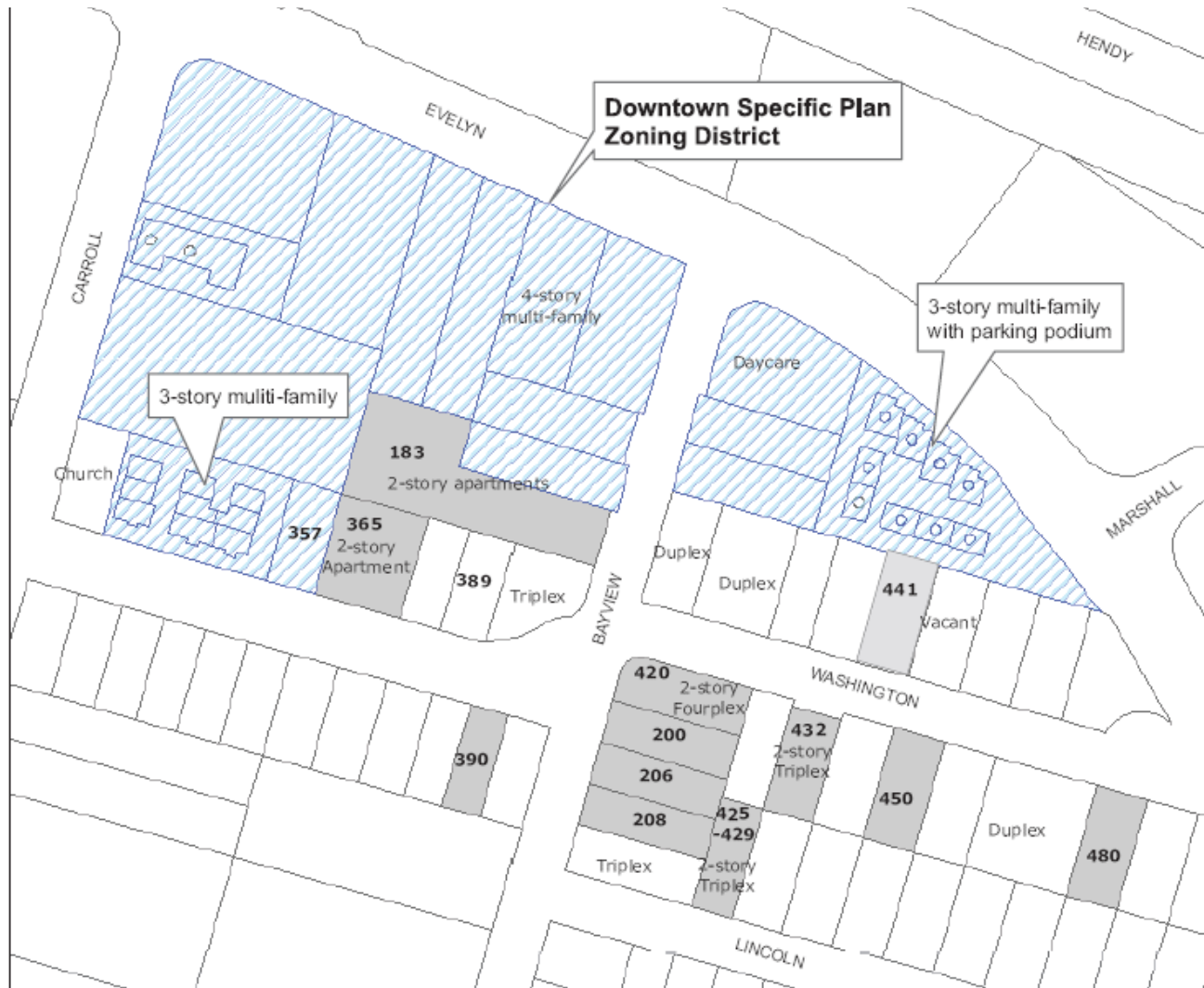
Background

Existing Lot Conditions

- Zoning: R-2/PD
- Lot Area: 8,147 s. f.
- 2 One-story homes and various accessory structures



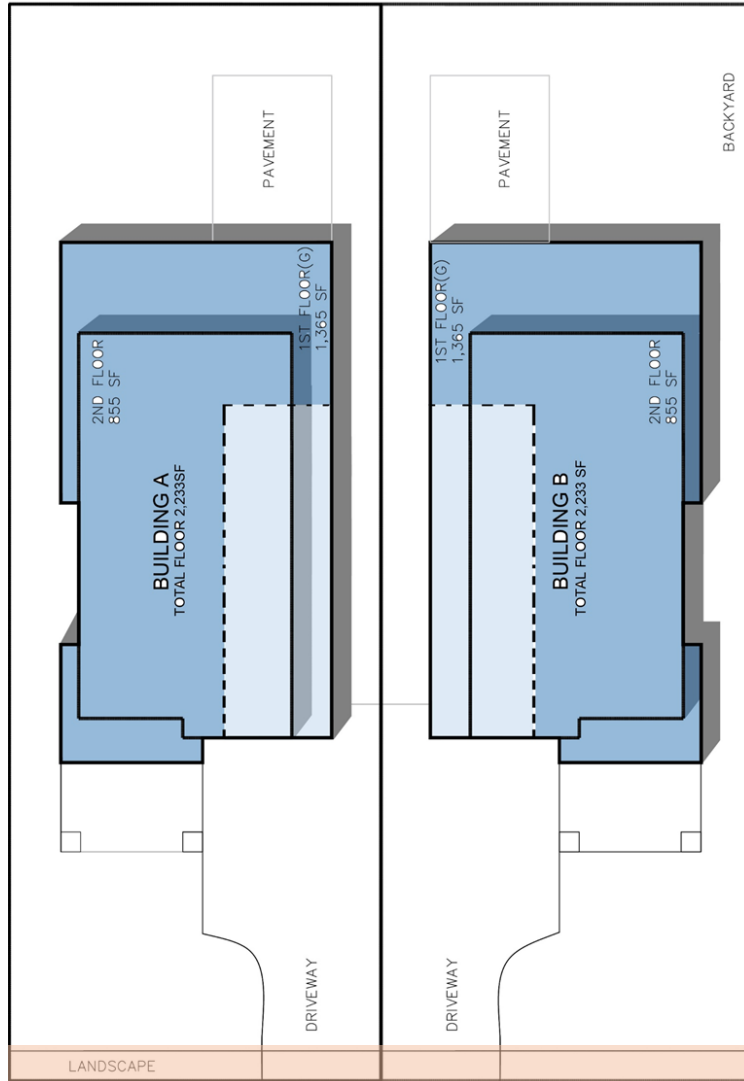
Site Context



Original Proposal



Site Plan



Proposed changes to
Address Planning
Commission comments:

1. Adjoining driveways
2. Tandem garage
3. Reduced FAR from 60% to 56%
4. Added front porch entry features

← • 3' Street Easement Dedication

Architectural Rendering



Recommendation

Alternatives

1. Approve the Design Review with the Conditions of Approval in Attachment 4.
2. Approve the Design Review with modified conditions.
3. Deny the Design Review and provide direction to staff and the applicant where changes should be made.

Staff Recommendation

Alternative 1: Approve the Design Review with the Conditions of Approval in Attachment 4.