



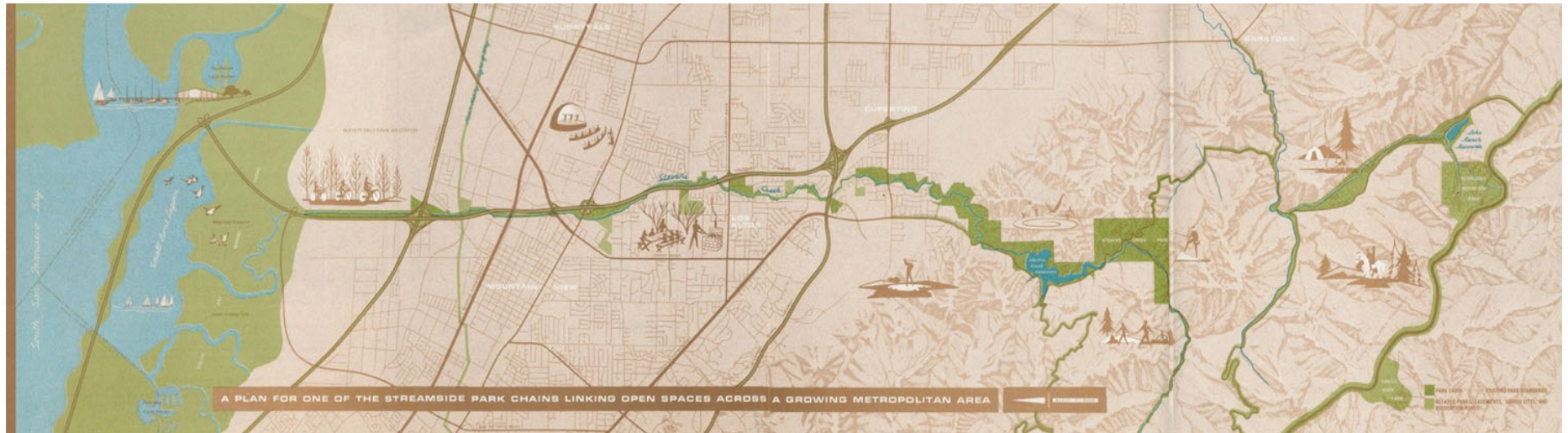
Sunnyvale

Stevens Creek Trail Extension Project

Dennis Ng
Transportation and Traffic Manager
November 12, 2019



Stevens Creek Trail

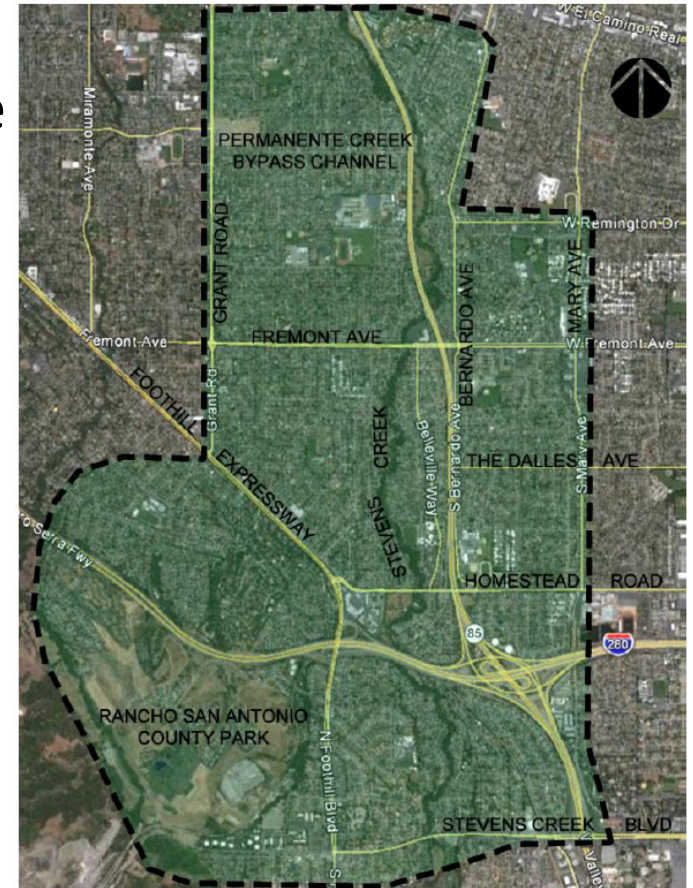


The Stevens Creek Trail will link the Bay Trail to the Ridge Trail and connect to the Skyline-to-the-Sea Trail that extends to the Pacific Ocean in Big Basin State Park.

Stevens Creek Park Chain – 1961 Brochure

Stevens Creek Trail

- Existing Trail
 - ◆ 5 miles in Mountain View
 - from San Francisco Bay to the Dale /Heatherstone bike-pedestrian overcrossing of State Route 85
 - ◆ 1 mile in Cupertino
 - From Stevens Creek Boulevard to McClellan Road
- A gap exists between these two trail segments
 - ◆ 3 miles through the cities of Cupertino, Los Altos, Mountain View, and Sunnyvale



2015 – Joint Cities Coordinated Stevens Creek Trail Feasibility Study

- Joint Cities Working Team (JCWT)
 - ◆ City of Sunnyvale
 - ◆ City of Cupertino
 - ◆ City of Los Altos
 - ◆ City of Mountain View
 - ◆ Valley Water (formerly Santa Clara Valley Water District)



2015 – Joint Cities Coordinated Stevens Creek Trail Feasibility Study

- Study Area Segments

- ◆ Segment 1 – Dale Avenue /Heatherstone Way to Fremont Avenue
- ◆ Segment 2 – Fremont Avenue to Homestead Road
- ◆ Segment 3 – Homestead Road to Stevens Creek Boulevard
- ◆ Segment 4 – Connections to Rancho San Antonio County Park



2015 – Joint Cities Coordinated Stevens Creek Trail Feasibility Study

RTC 16-0034:

Sunnyvale City Council approved a Preferred Alignment on February 9, 2016:

Dale Avenue/Heatherstone Way to Fremont Avenue alignment which consists of an off-street trail along the 22 acres of open space along State Route (SR) 85 from Dale Avenue/Heatherstone Way to Fremont Avenue, and connections at Fremont Avenue on both sides of SR 85.

Grant Funding Opportunity

- VTA 2016 Measure B
 - ◆ Bicycle and Pedestrian Program
 - \$250M in 2017 dollars
 - ◆ Competitive grant projects require a **10%** non-2016 Measure B contribution
 - ◆ Call for Projects will take place early 2020

Partnership with City of Mountain View

- Fiscal Year 2019/20 Adopted Budget:
 - ◆ Project 20-50, Stevens Creek Trail Extension from Dale / Heatherstone Way to West Remington Drive Design
 - Allocated \$600,000 as 10% local matching funds for potential Measure B grant application
- Requested to partner with City of Sunnyvale
 - ◆ In the application of Measure B Bicycle and Pedestrian Competitive Grant Program for design funding then subsequently construction funding
 - ◆ City of Sunnyvale to also allocate \$600,000 as local matching funds
 - ◆ City of Mountain View will be the lead Project Sponsor

Partnership with City of Mountain View

Proposed Stevens Creek Trail Extension Project:

- a. **Joint Cities** - From Dale / Heatherstone Way to West Remington Drive
- b. **City of Mountain View** - Build a pedestrian overcrossing at Remington Court over State Route 85 to connect to Mountain View High School

Apply for Measure B funding for design then construction

Future project to continue the trail extension from Remington Drive to Fremont Avenue

Recommendation

Considerations

- Alternative 1: Authorize a Local Match in the amount of \$600,000 for the VTA Measure B Bicycle and Pedestrian Competitive Grant Program for the Stevens Creek Trail extension project; and Approve Budget Modification No. 12 to Appropriate \$600,000 from the Transportation Impact Fees Reserve.
- Alternative 2: Do not authorize a Local Match in the amount of \$600,000 for the VTA Measure B Bicycle and Pedestrian Competitive Grant Program for the Stevens Creek Trail extension project and do not Approve Budget Modification No. 12.
- Alternative 3: Other action as directed by Council.

Recommendation

Staff Recommendation

- Alternative 1: Authorize a Local Match in the amount of \$600,000 for the VTA Measure B Bicycle and Pedestrian Competitive Grant Program for the Stevens Creek Trail extension project; and Approve Budget Modification No. 12 to Appropriate \$600,000 from the Transportation Impact Fees Reserve.



Questions?