

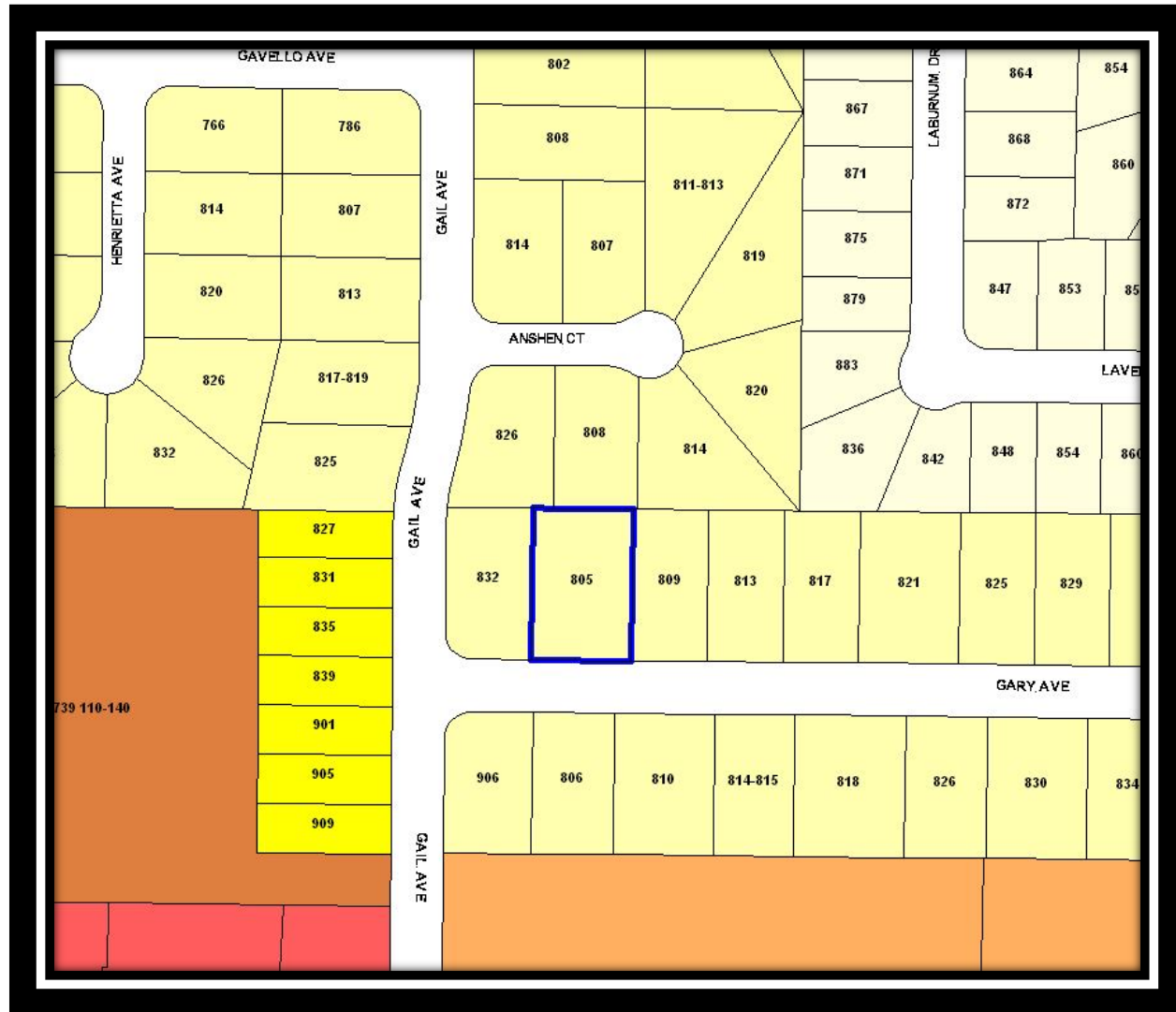


Sunnyvale

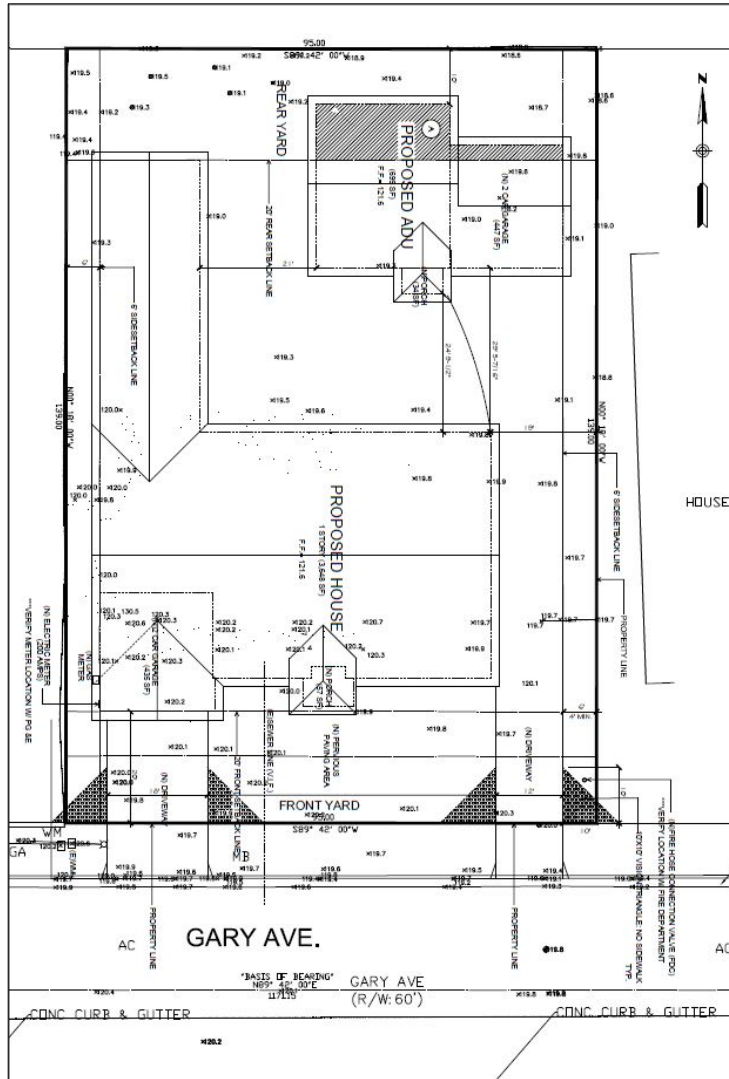
805 Gary Avenue
2018-7796

Planning Commission, January 13, 2020

Zoning



Lot Conditions and Project Proposal

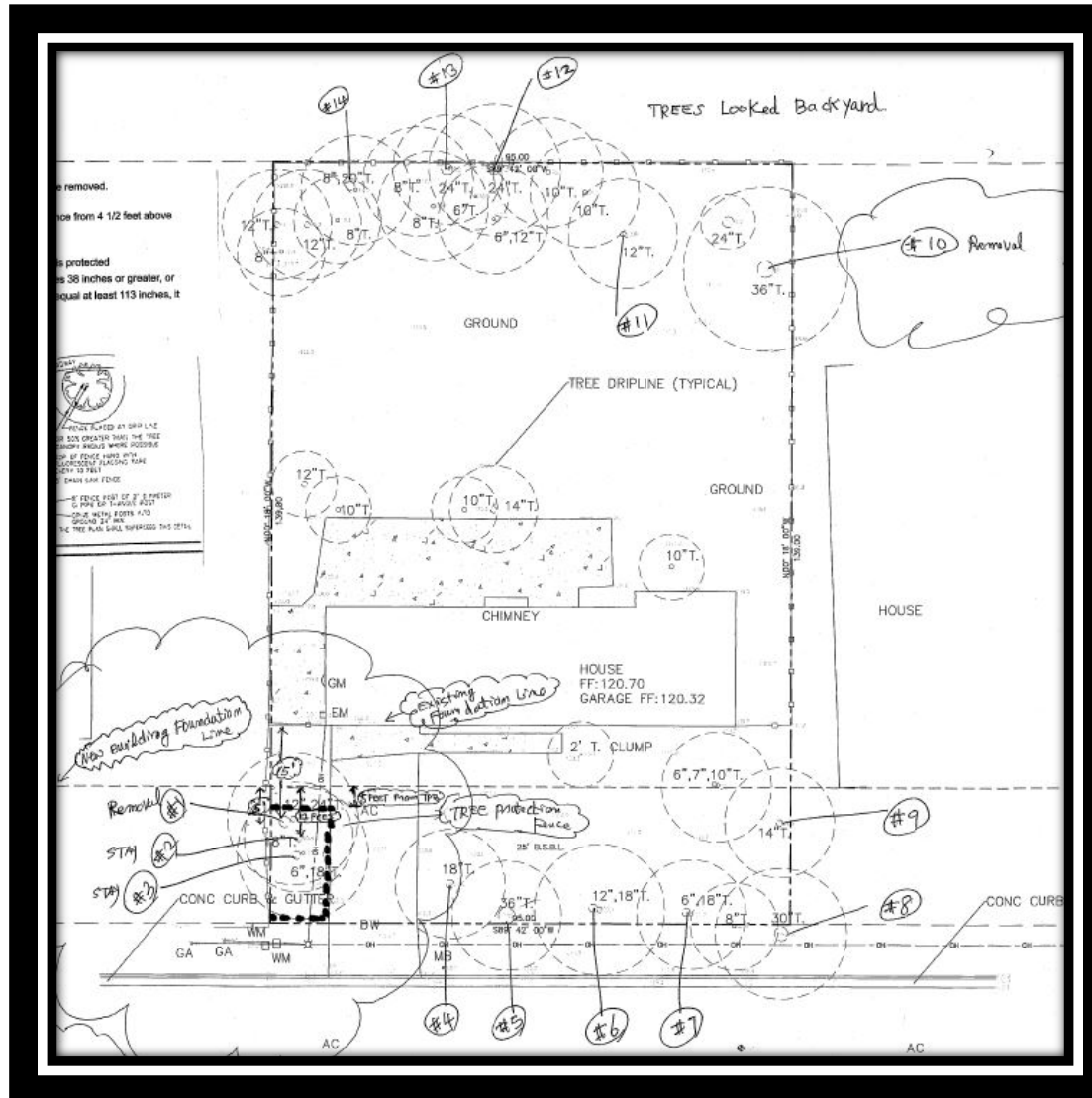


- Zoning: R1
- Lot Area: 13,205 s.f.
- Gross Floor: 5,229 s.f.
- FAR: 39.6%
- Lot Coverage: 40.3%
- Height: 1-story; approx. 18'-5"

Front Elevation



Tree Removal



Recommendation

Alternatives

1. Approve the Design Review with the Conditions of Approval in Attachment 4.
2. Approve the Design Review with modified conditions.
3. Deny the Design Review and provide direction to staff and the applicant where changes should be made.

Staff Recommendation

Alternative 1: Approve the Design Review with the Conditions of Approval in Attachment 4.