

JANUARY 27, 2020
MOFFETT PARK, SUNNYVALE, CA.
PLANNING COMMISSION STUDY SESSION



399 W JAVA

Artist renderings for illustrative purposes only



**PROJECT
COMPARISON**

Development
within Existing
Entitlements



OFFICE BUILDING

Mass Timber
Office modified to
better address site,
sustainability, and
sense of place



FITNESS CENTER

Update structure
and facade to
increase
performance



PARKING GARAGE

Green Facade to connect
to overall campus
Convertible for future use

Campus | Entitlements



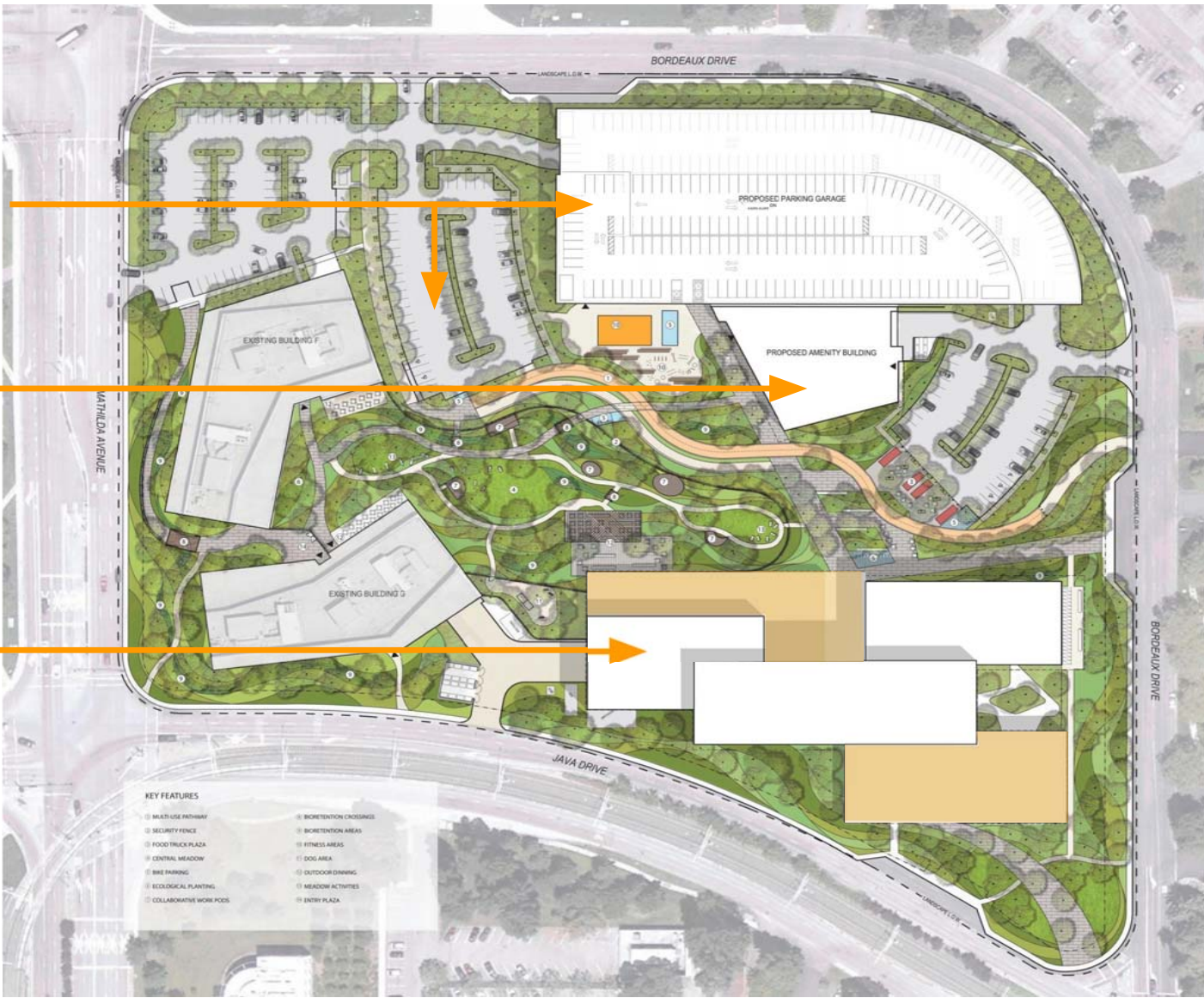
ORIGINAL ENTITLED SITE PLAN

PROPOSED PROJECT IS
CONSISTENT WITH THE
ENTITLEMENTS

TOTAL PARKING SPACES
1548

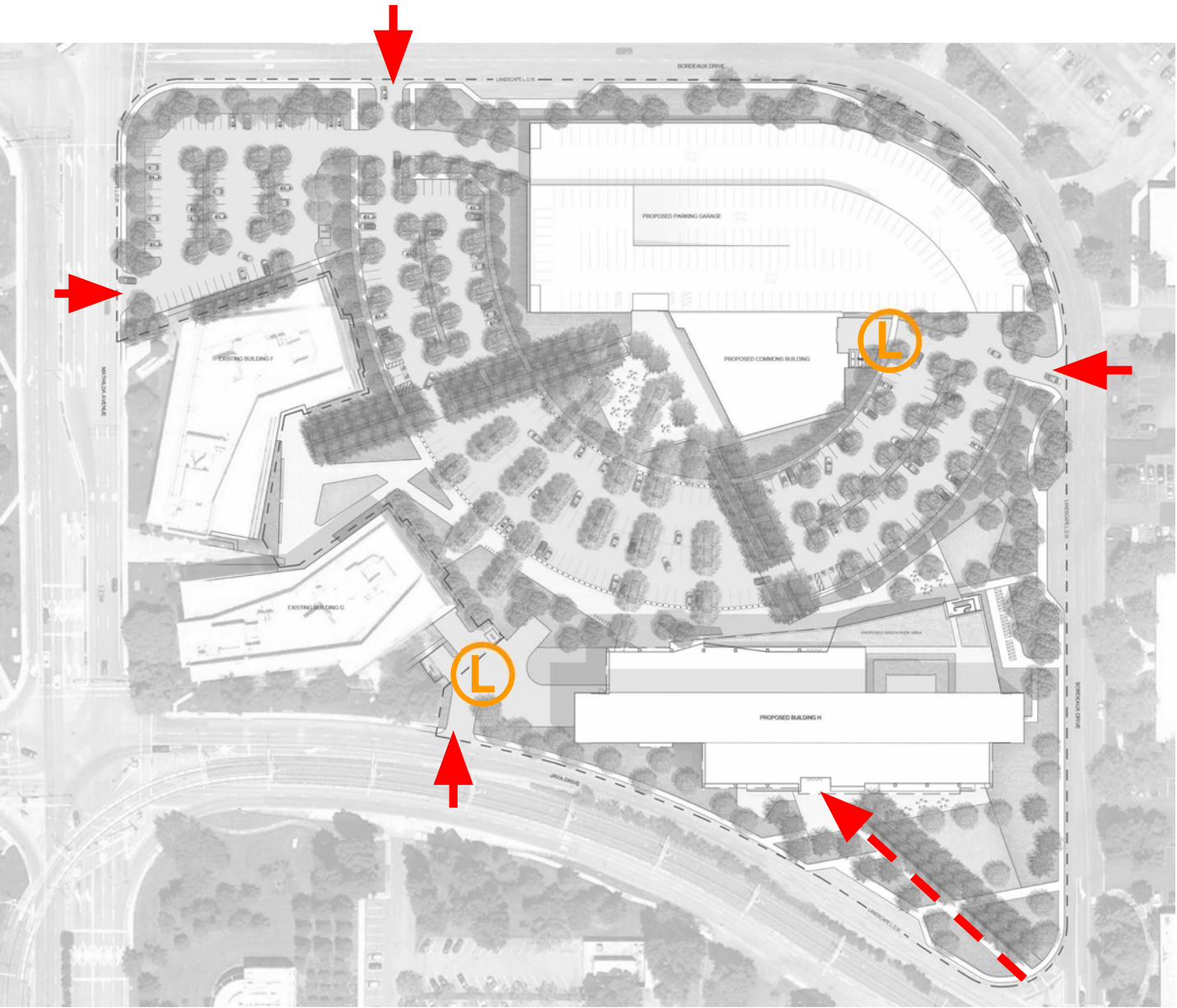
PROPOSED COMMONS
BUILDING
24,101 SF

OFFICE BUILDING
315,000 SF

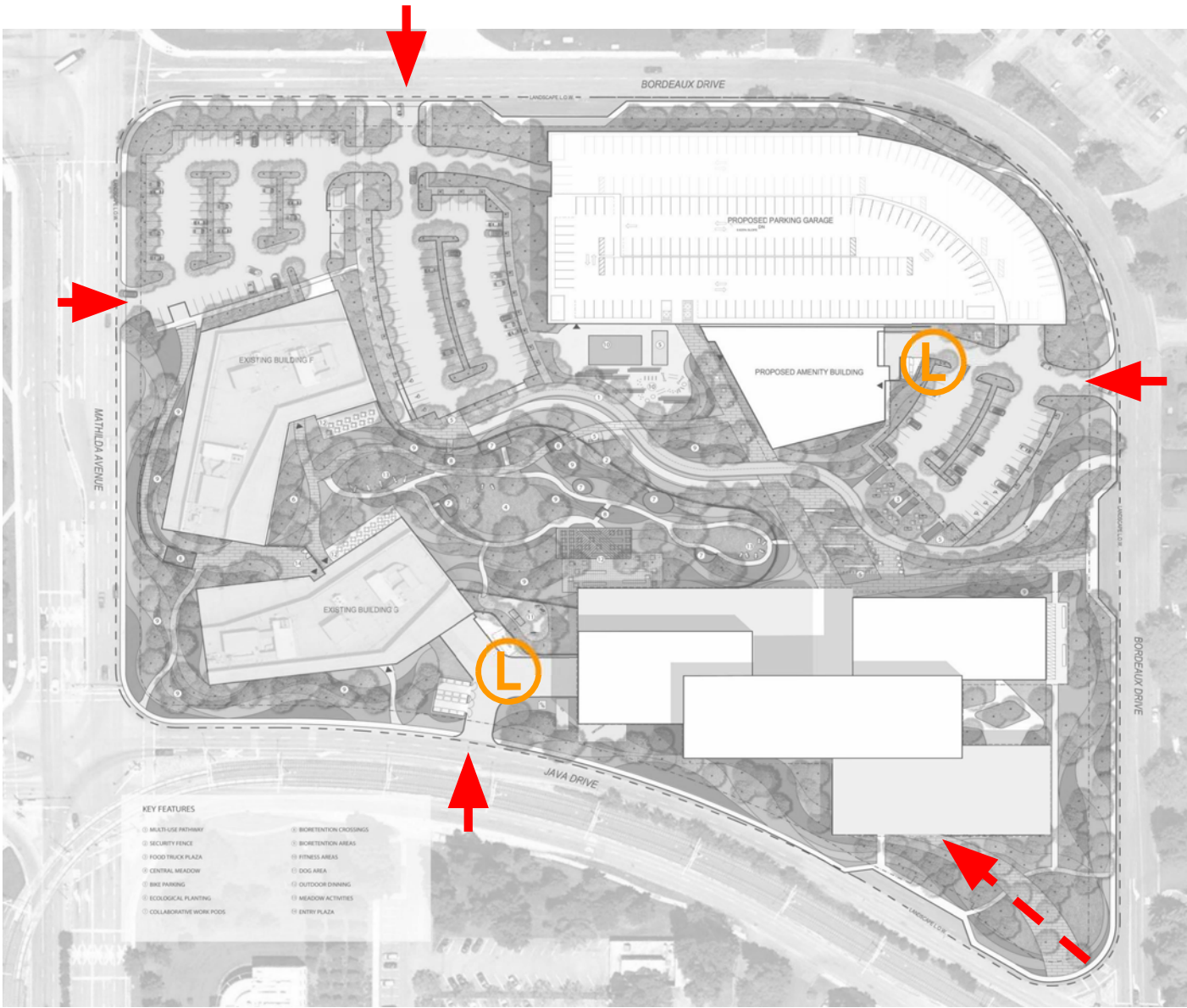


PROPOSED SITE PLAN

Campus | Site Circulation and Access



ORIGINAL ENTITLED SITE PLAN



PROPOSED SITE PLAN

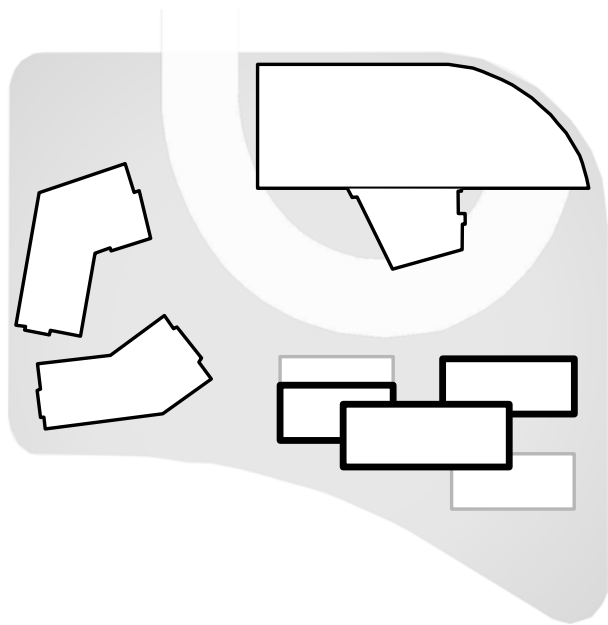
CONSISTENT WITH THE ENTITLEMENTS

➡ ALL ROAD ACCESS POINTS CONSISTENT

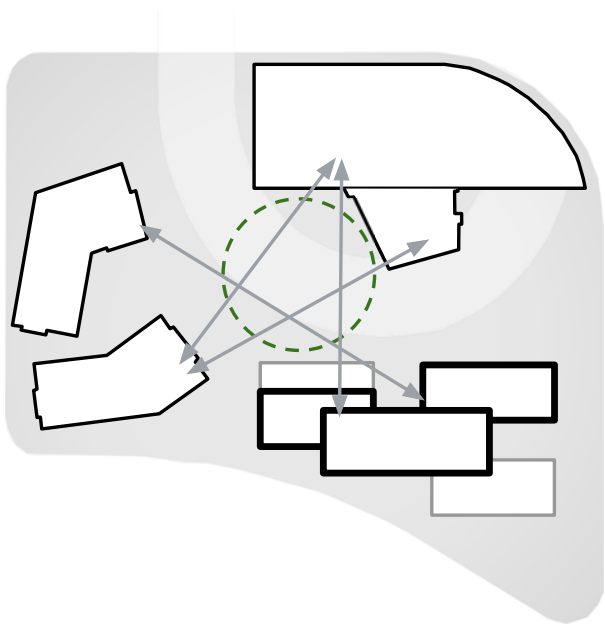
Ⓛ ALL LOADING LOCATIONS CONSISTENT

➡ PRIMARY BUILDING ACCESS FROM VTA CONSISTENT

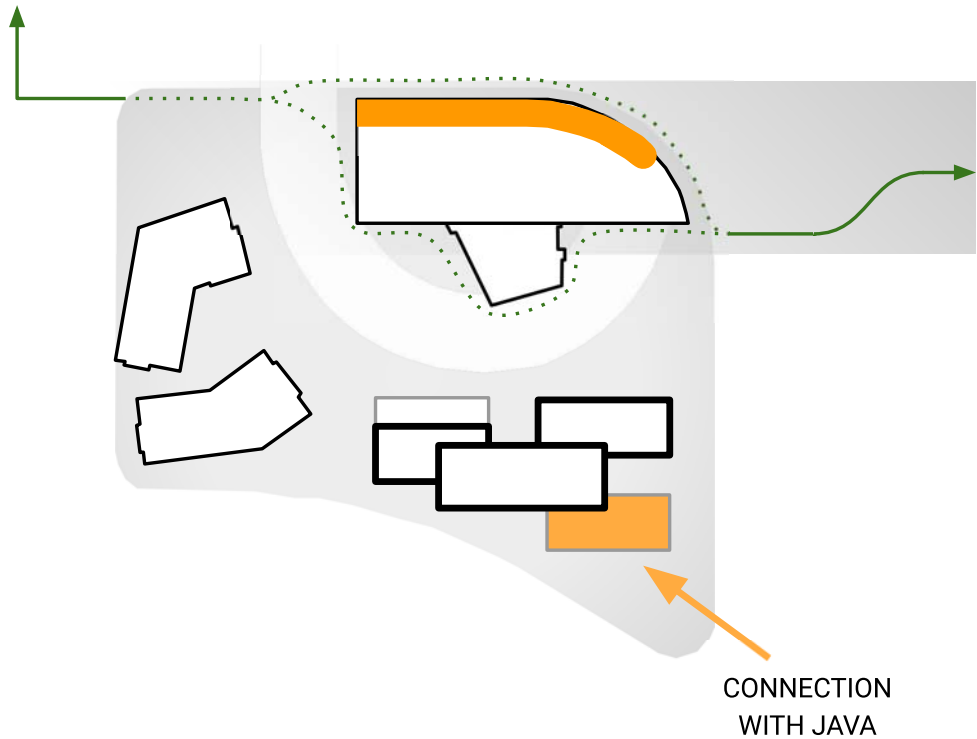
Site Approach | Design Opportunities Consistent with Entitlements



IMPROVED OPEN SPACE



CONNECT CAMPUS BUILDINGS



ENHANCE ENGAGEMENT AT STREET

Site Approach | Design Opportunities



Office | Entitlements



ORIGINAL ENTITLED BUILDING H SOUTHEAST 3D BIRD’S-EYE VIEW



PROPOSED BUILDING H SOUTHEAST 3D BIRD’S-EYE VIEW*

*Artist renderings for illustrative purposes only

Office | Entitlements



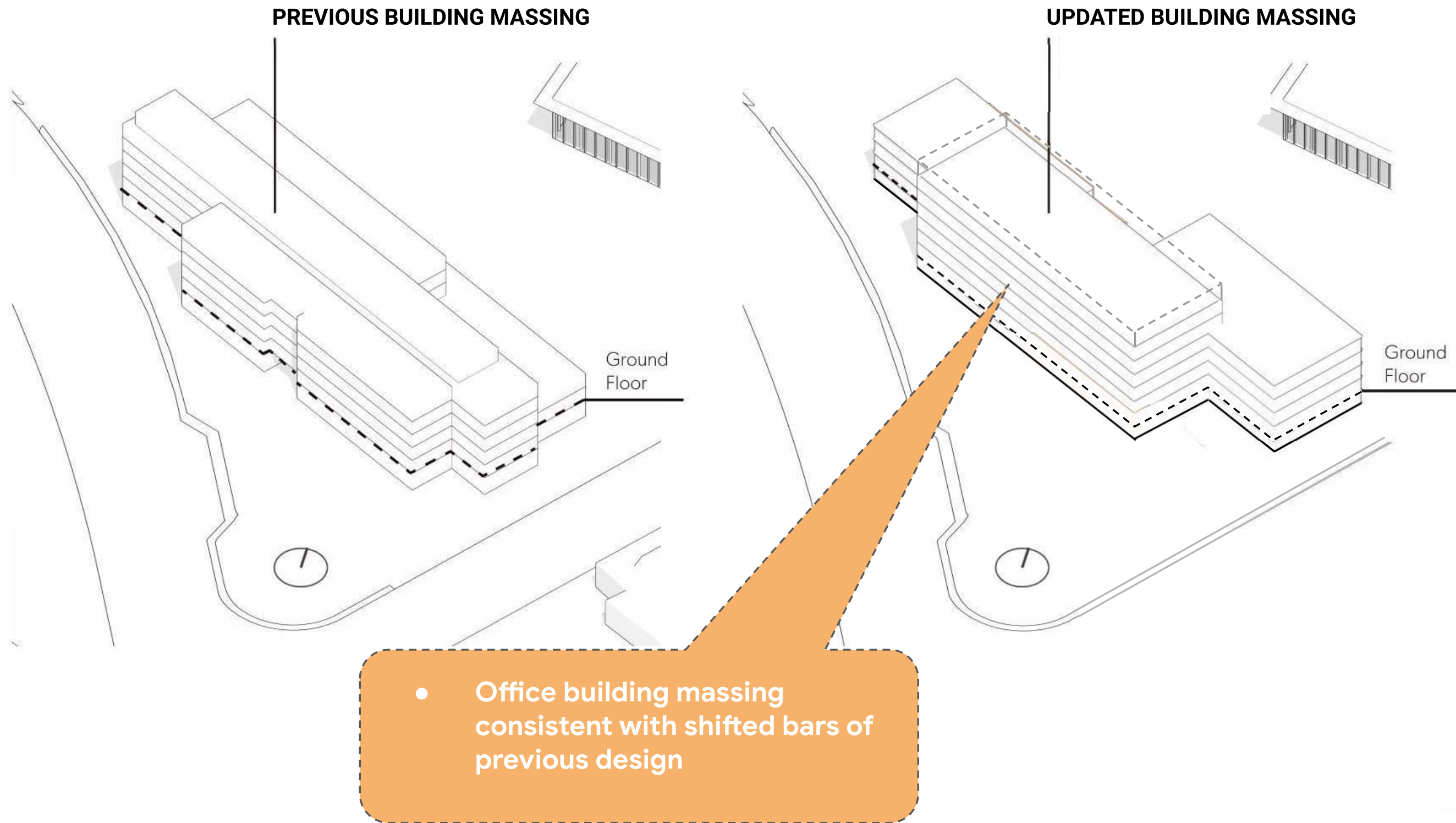
ORIGINAL ENTITLED BUILDING H SOUTHEAST 3D VIEW



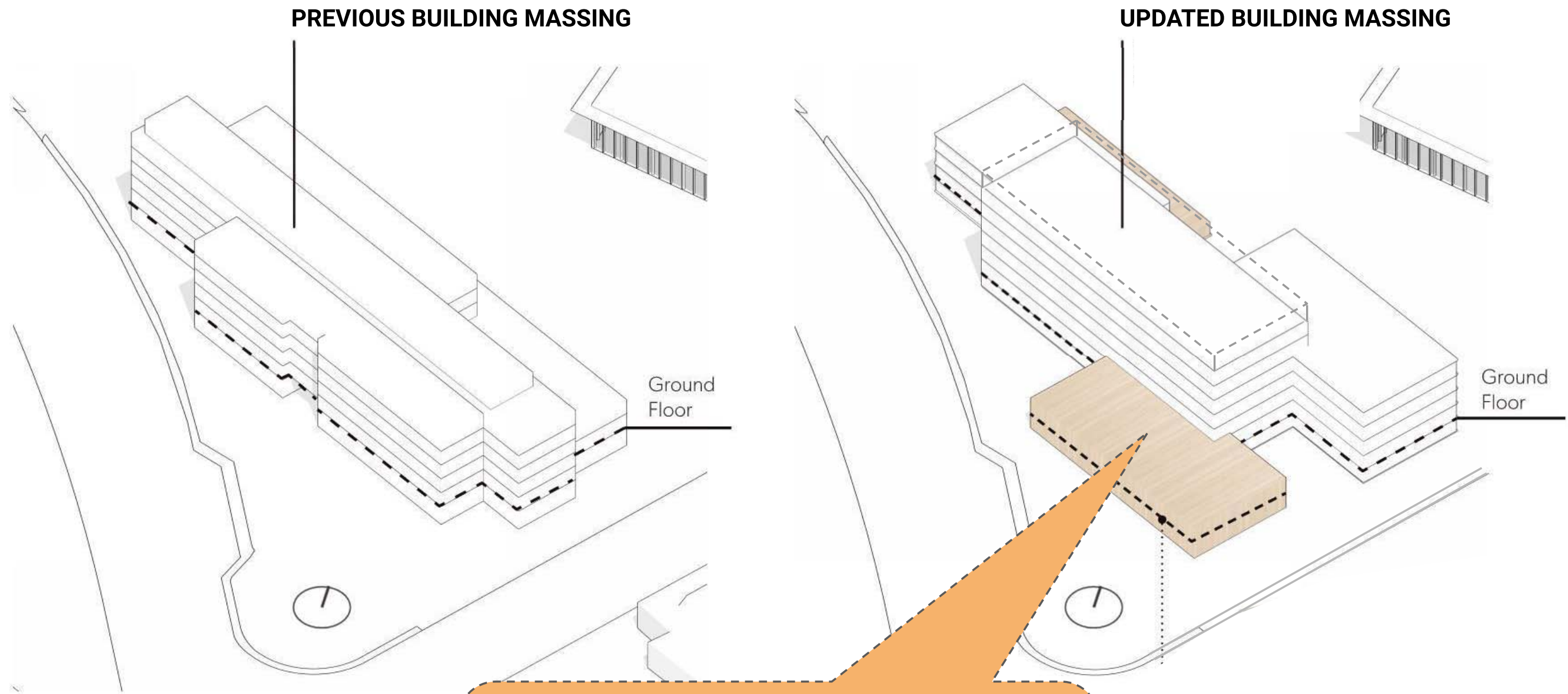
PROPOSED BUILDING H SOUTHEAST 3D VIEW*

*Artist renderings for illustrative purposes only

OFFICE BUILDING | Design Opportunities Consistent with Entitlements

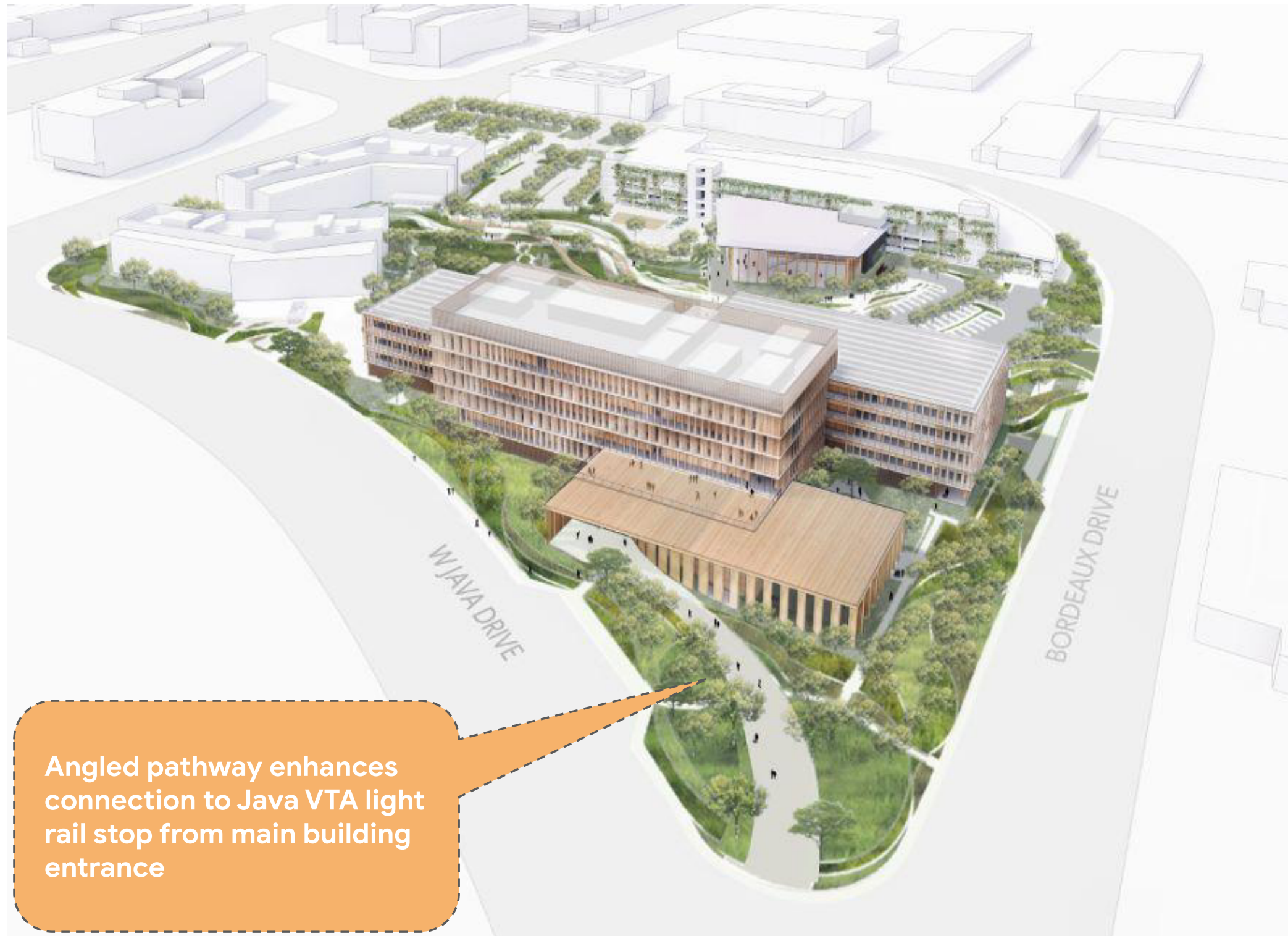


OFFICE BUILDING | Design Opportunities Consistent with Entitlements



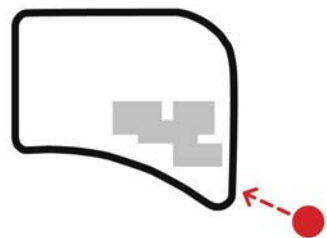
- Opportunity to engage Java corner with two - story mass timber feature building
- Step down building massing to enhance pedestrian experience

OFFICE BUILDING | Design Opportunities Consistent with Entitlements





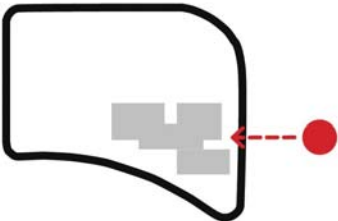
Artist renderings for illustrative purposes only



Office Building | East

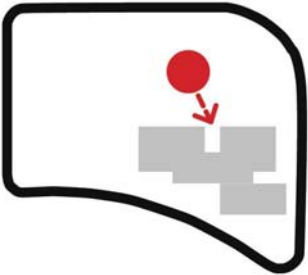


Artist renderings for illustrative purposes only

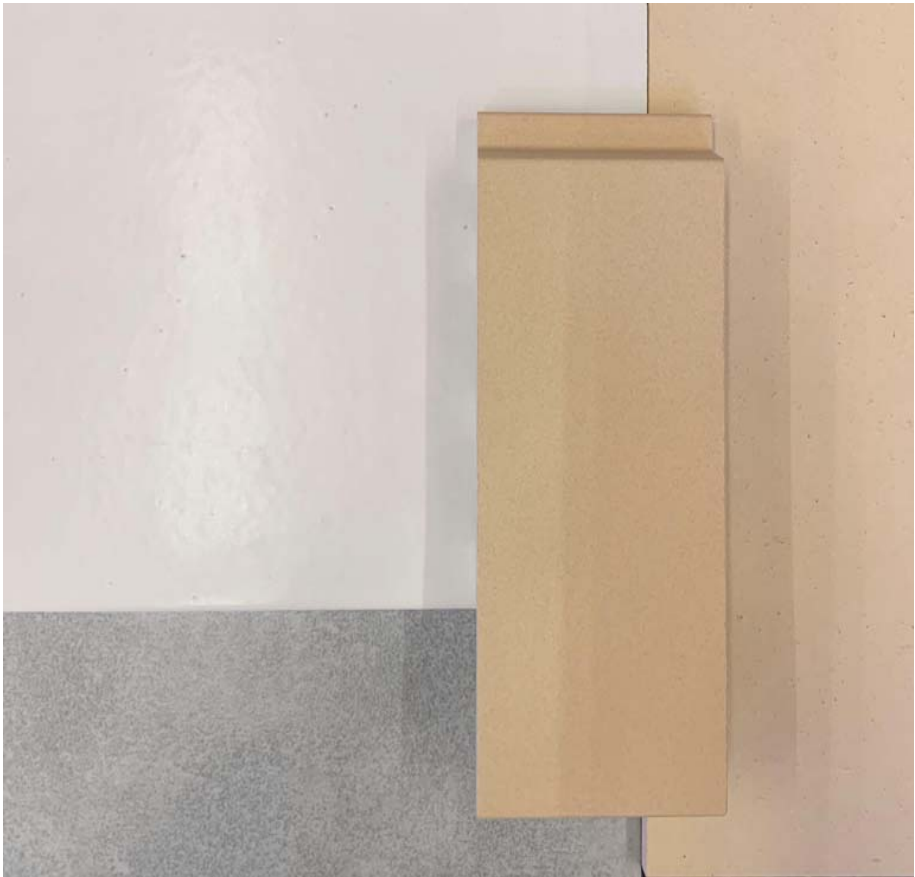




Artist renderings for illustrative purposes only



Materiality | Expressing Natural Elements



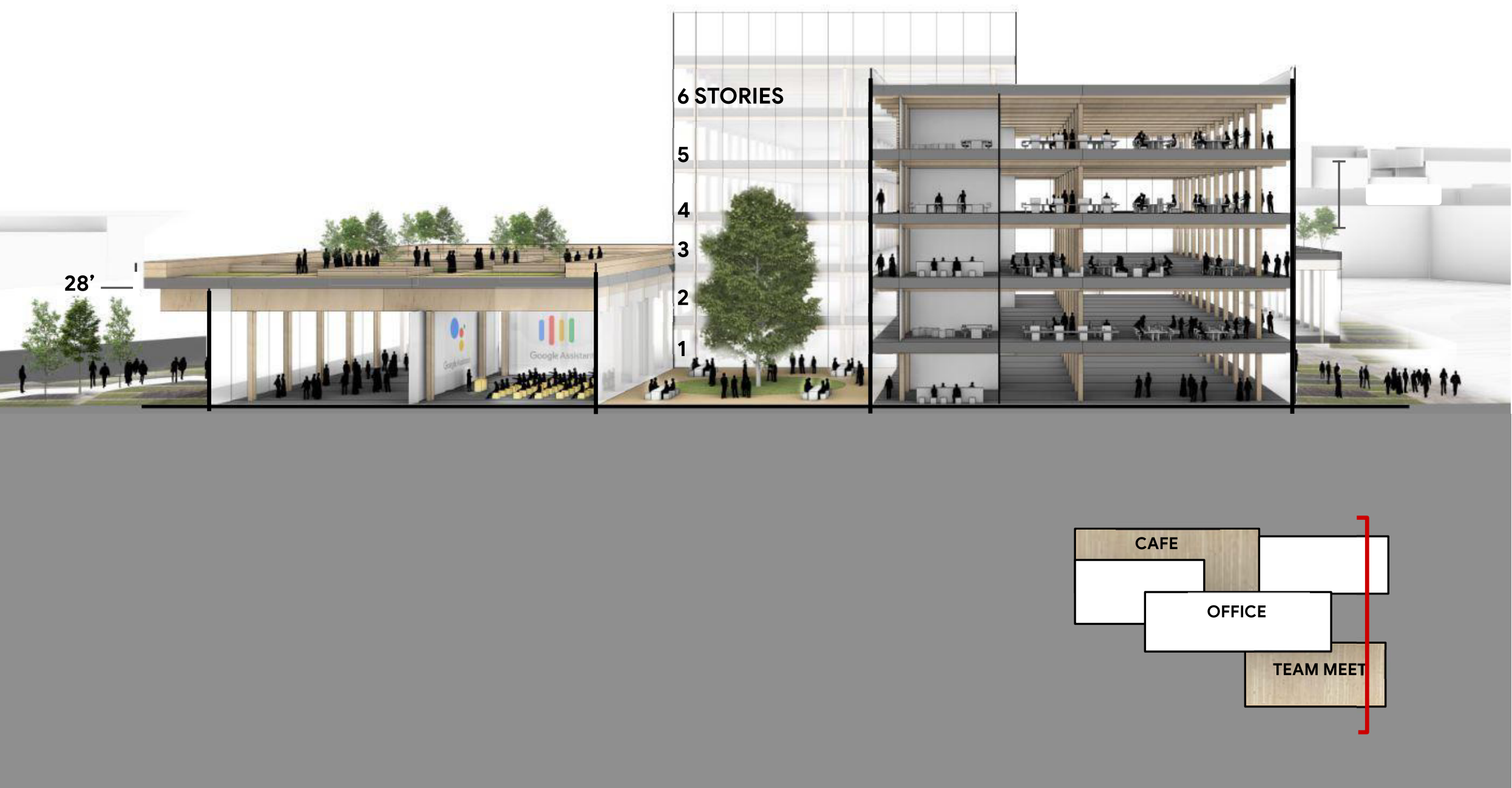
ACCOYA



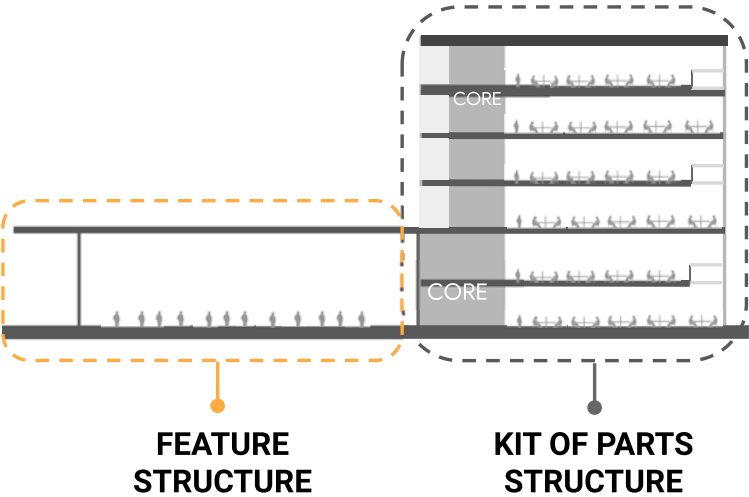
TERRACOTTA - WHITE, GREY AND CREAM TONES



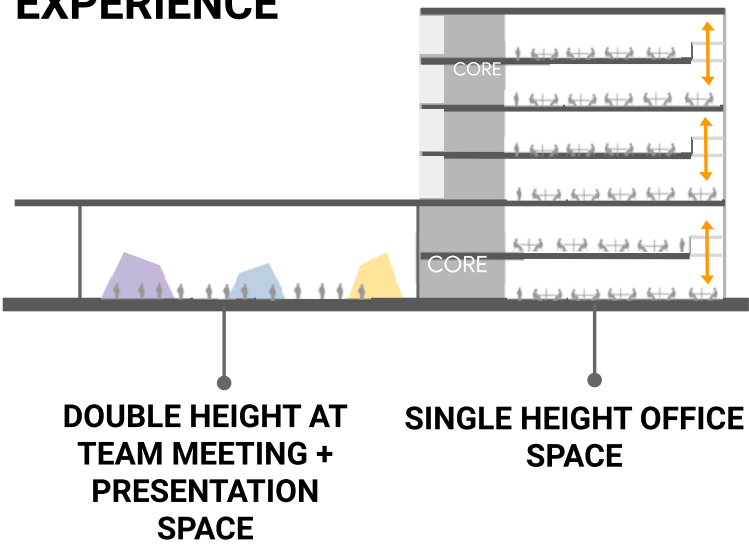
Section Perspective | N/S Section at Events Beacon



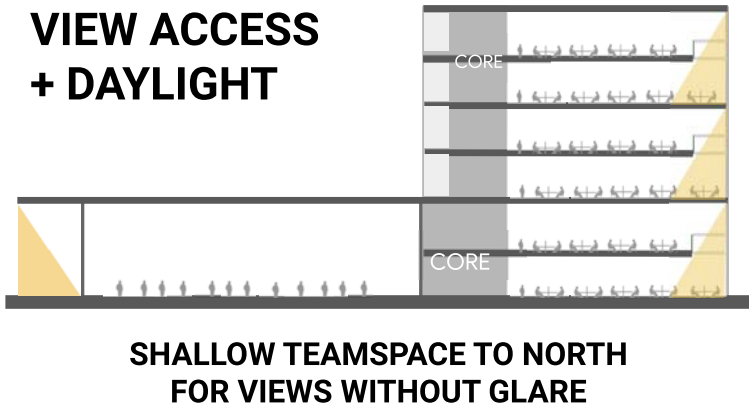
STRUCTURE



EXPERIENCE



VIEW ACCESS + DAYLIGHT



Fitness Center



Artist renderings for illustrative purposes only

Fitness Center



RENDERING OF PROPOSED MODIFICATIONS*
*Artist renderings for illustrative purposes only



RENDERING OF EXISTING ENTITLEMENTS

The Fitness Center was refined to express mass timber and create a more distinct experience for users



Extend Canopy Increase Performance

Reduce solar gain,
increase efficiency



Site Elements + Landscape Integration

Site identity elements used
to increase connection
between program and
exterior



High Performance Glazing for Fitness Program

Maximize views
And comfort

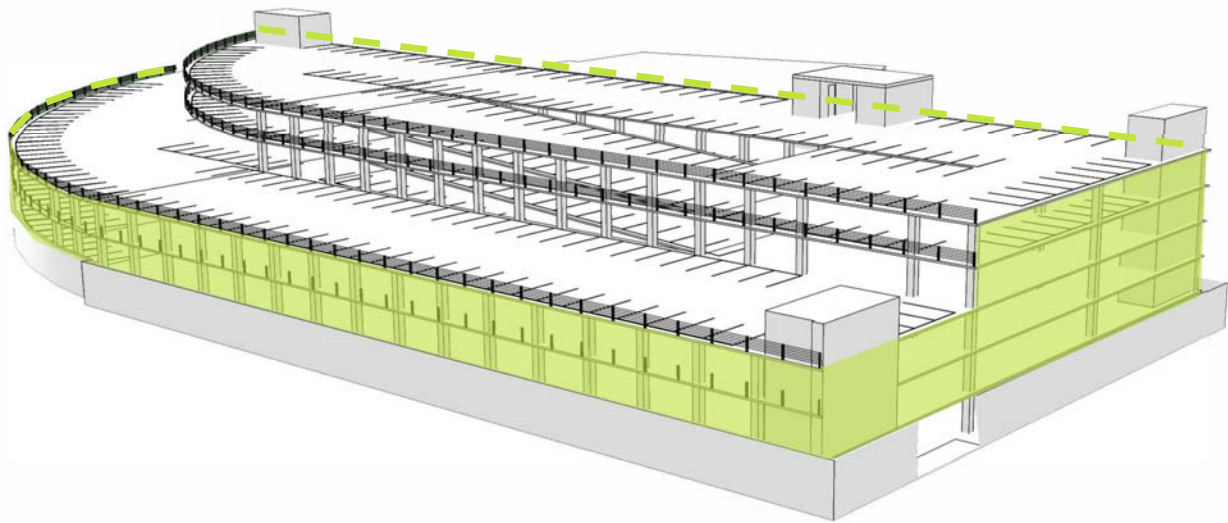
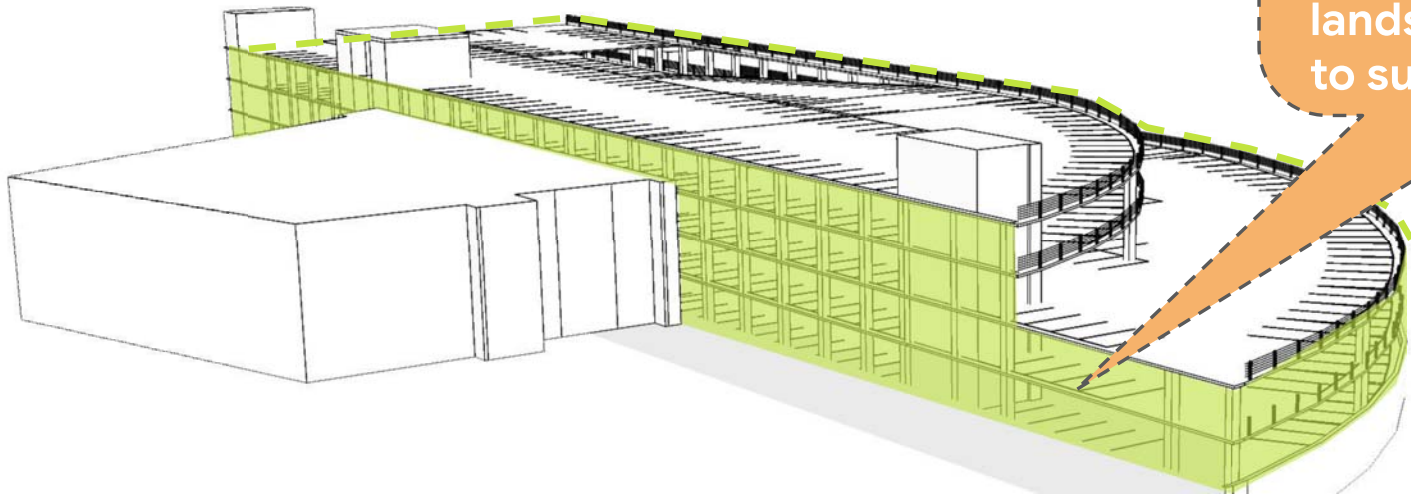


Mass Timber Structure

Reduce embodied
carbon by switching to a
Mass Timber structure

Parking Garage | Design Strategies

FACADE: GREEN SCREEN



Continue green screen around parking garage. Improves pedestrian experience and vertically extends the landscape to connect to surrounding context



Open Facade

Reduce dependency on mechanical systems, increase natural airflow



Utilize Green Screening

Manage air quality, integrate building into site design and landscaping



Active Vertical Connections & Access

Activate circulation by creating continuity with building design

Sustainability | LEED Gold and All Electric



TRANSPORTATION

- Provide easy access to public transportation
- Plentiful bike parking to encourage cycling
- EV charging stations

ROOFTOP PV

- Electricity from renewable energy sources to offset building energy usage

LANDSCAPE

- Native plant species
- Increase tree density

WATER

- Irrigation of trees and drought resistant plantings with recycled water
- Provide bio-swales for stormwater management

SITE / CIRCULATION

- Maximize green space to reduce heat-island effect
- Provide walking/bike paths to reduce need for vehicular transportation



Thank You

Artist renderings for illustrative purposes only