



Sunnyvale

884 Tartarian Way  
2018-8009

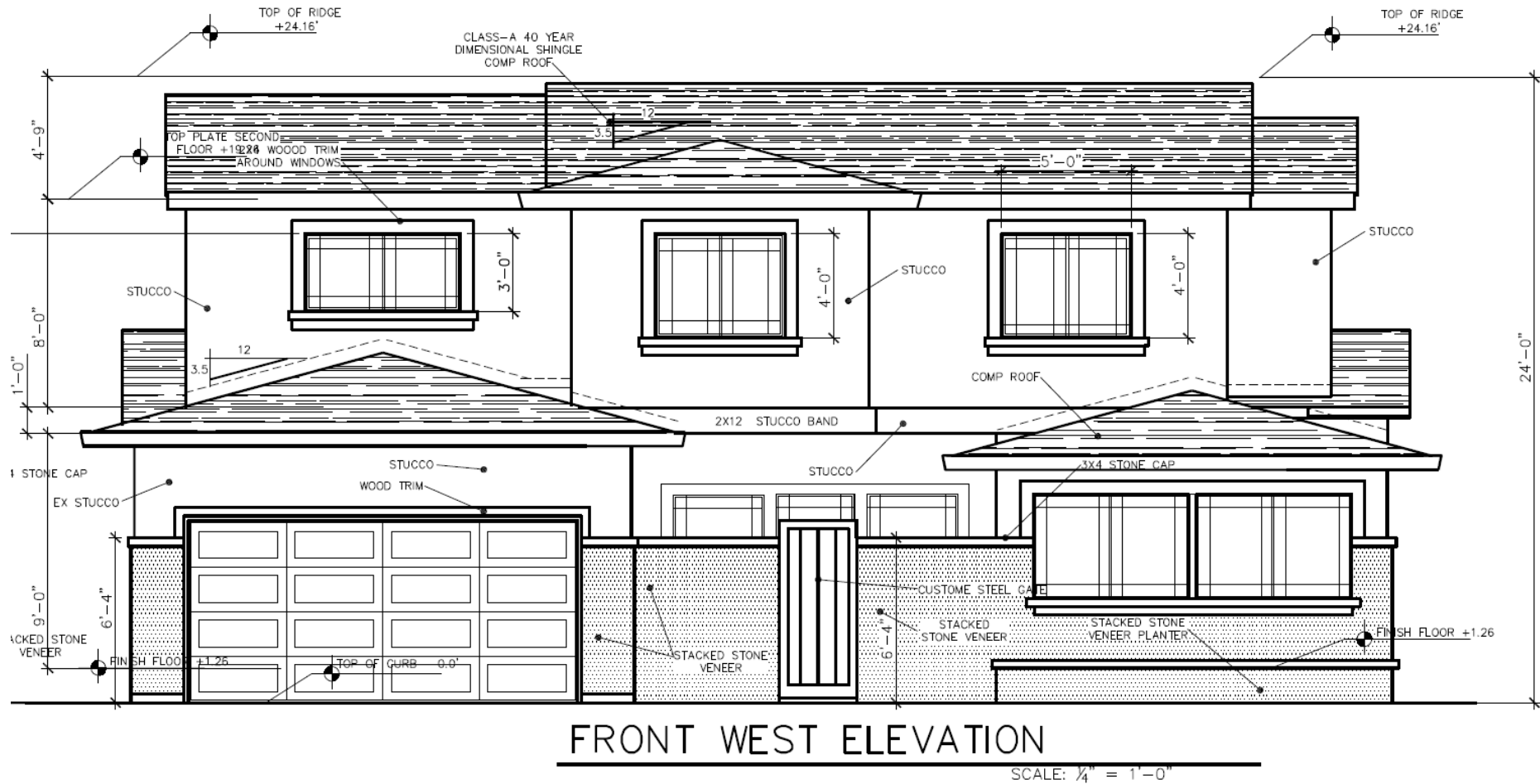
Cindy Hom

Planning Commission, February 24, 2020

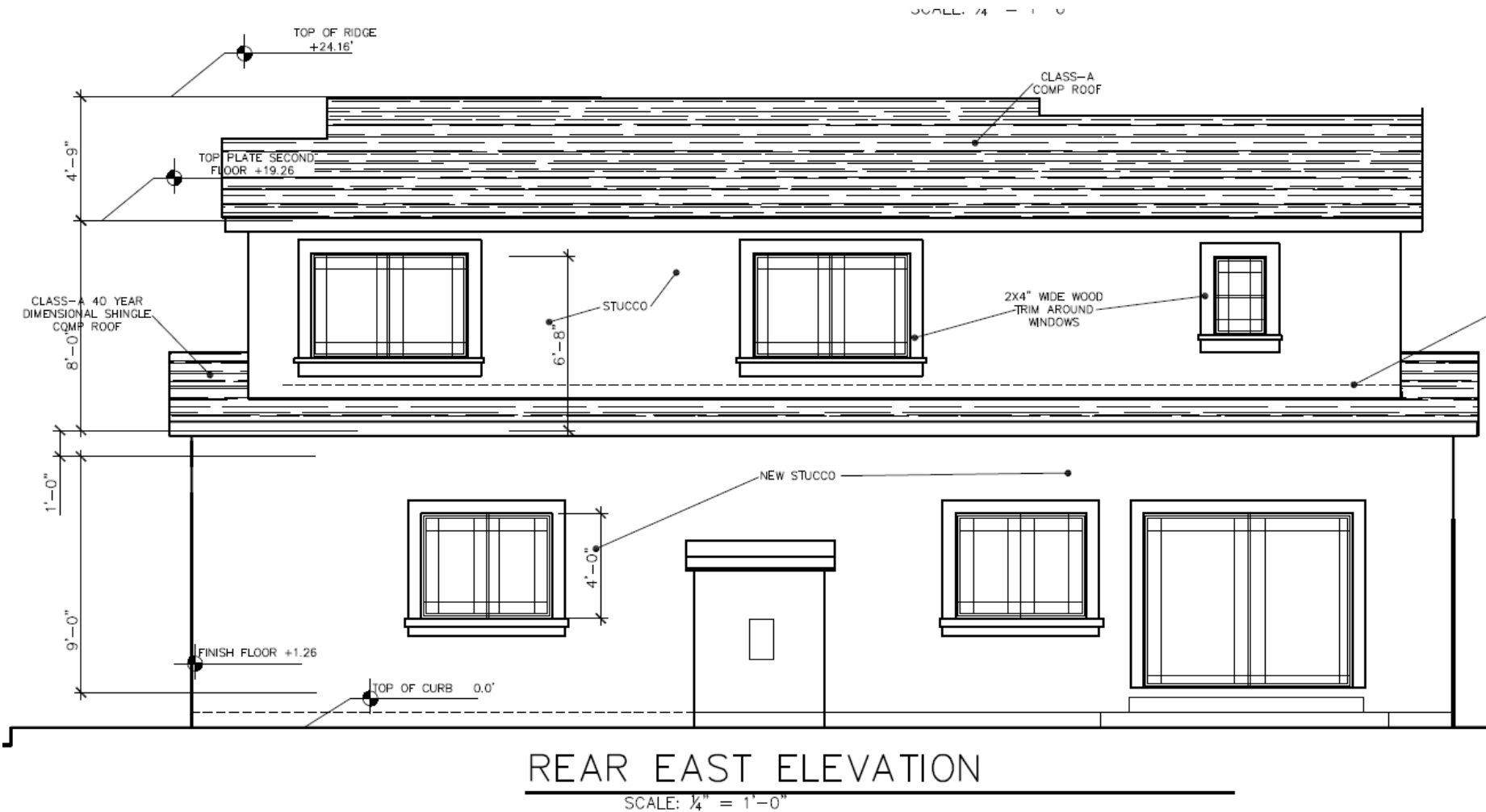
- 6,311-square feet residential lot
- 1,200 square feet addition
- Two-story home totaling 3,367 sq. ft.
- 53% FAR



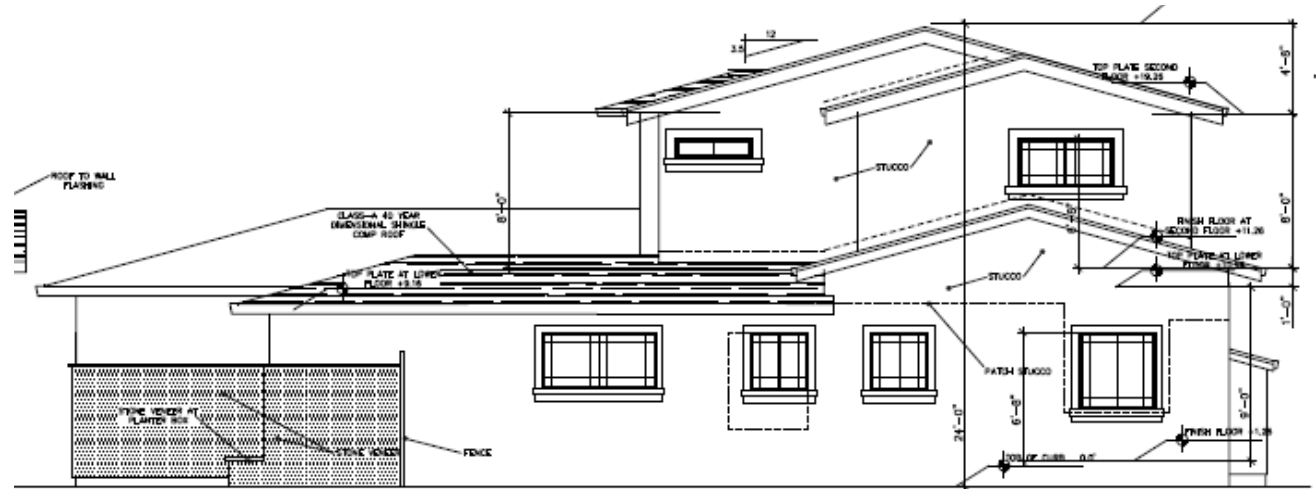
# Front Elevation



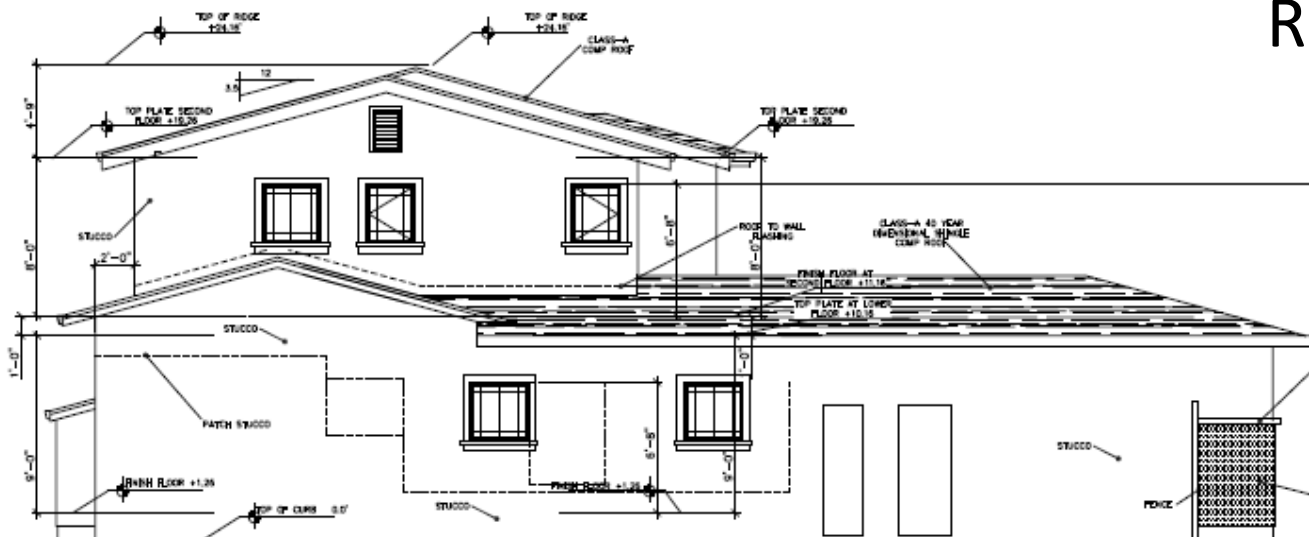
# Rear Elevation



# Side Elevations



Right Elevation



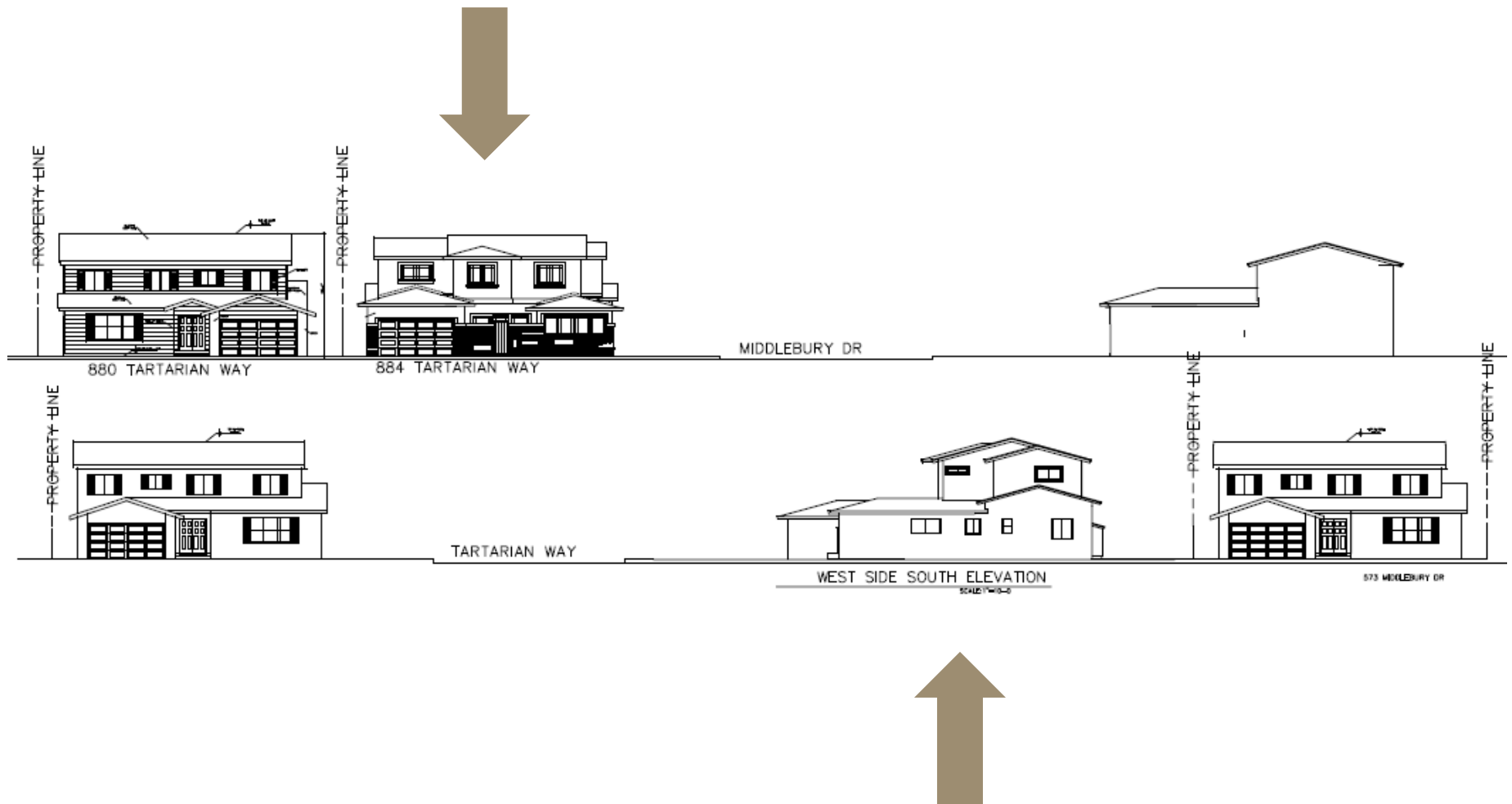
Left Elevation

# Architectural Rendering

---



# Streetscape Elevation



# Recommendation

## Alternatives

1. Approve the Design Review with the Conditions of Approval in Attachment 4.
2. Approve the Design Review with modified conditions.
3. Deny the Design Review and provide direction to staff and the applicant where changes should be made.

## Staff Recommendation

Alternative 1: Approve the Design Review with the Conditions of Approval in Attachment 4.









