



Sunnyvale

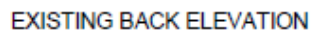
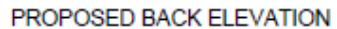
1398 Bedford Ave.
2019-7360

Cindy Hom

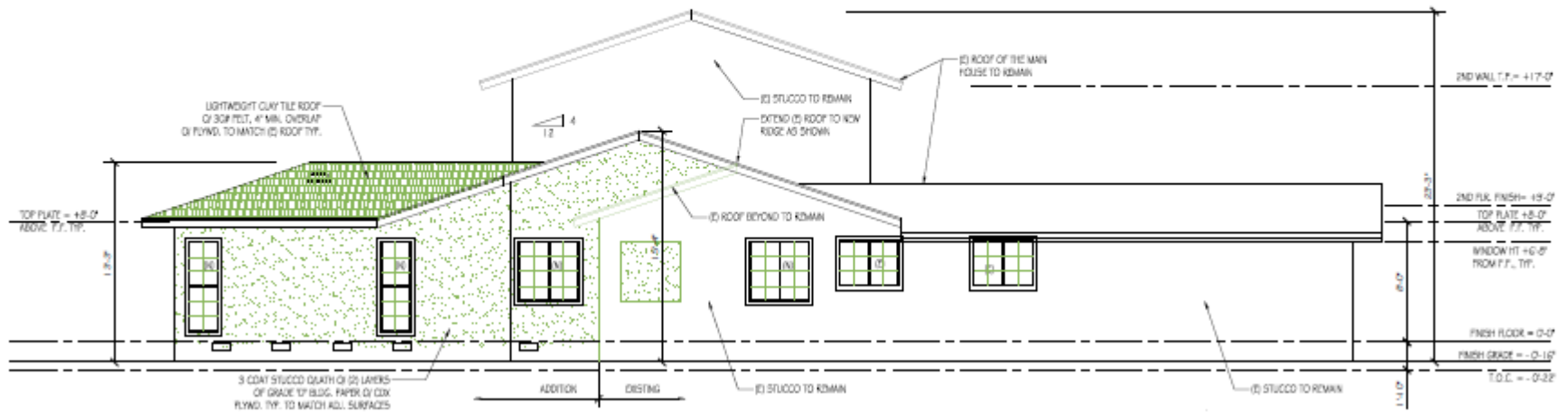
Planning Commission, February 24, 2020

- 9,156-square feet residential lot
- 585 square feet rear yard addition
- Two-story home totaling 3,838 sq. ft.
- 42% FAR

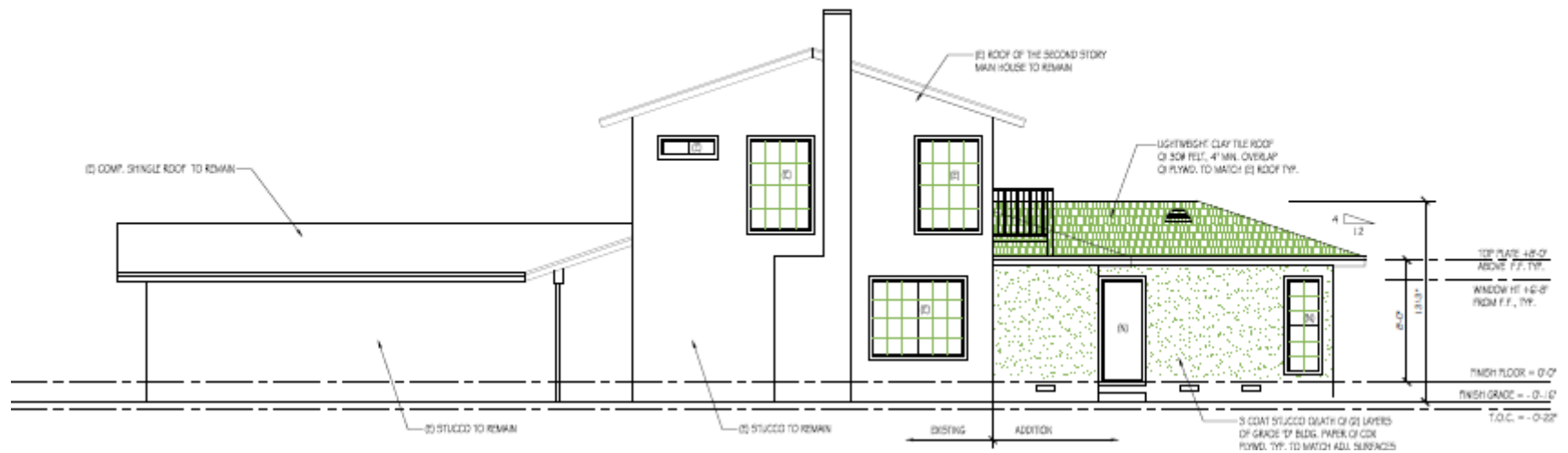




Left Elevation



Right Elevation



Left Elevation

Recommendation

Alternatives

1. Approve the Design Review with the Conditions of Approval in Attachment 4.
2. Approve the Design Review with modified conditions.
3. Deny the Design Review and provide direction to staff and the applicant where changes should be made.

Staff Recommendation

Alternative 1: Approve the Design Review with the Conditions of Approval in Attachment 4.