



Sunnyvale

Intuitive, Inc. Campus  
932, 950, 945-955 Kifer Road  
2019-7557

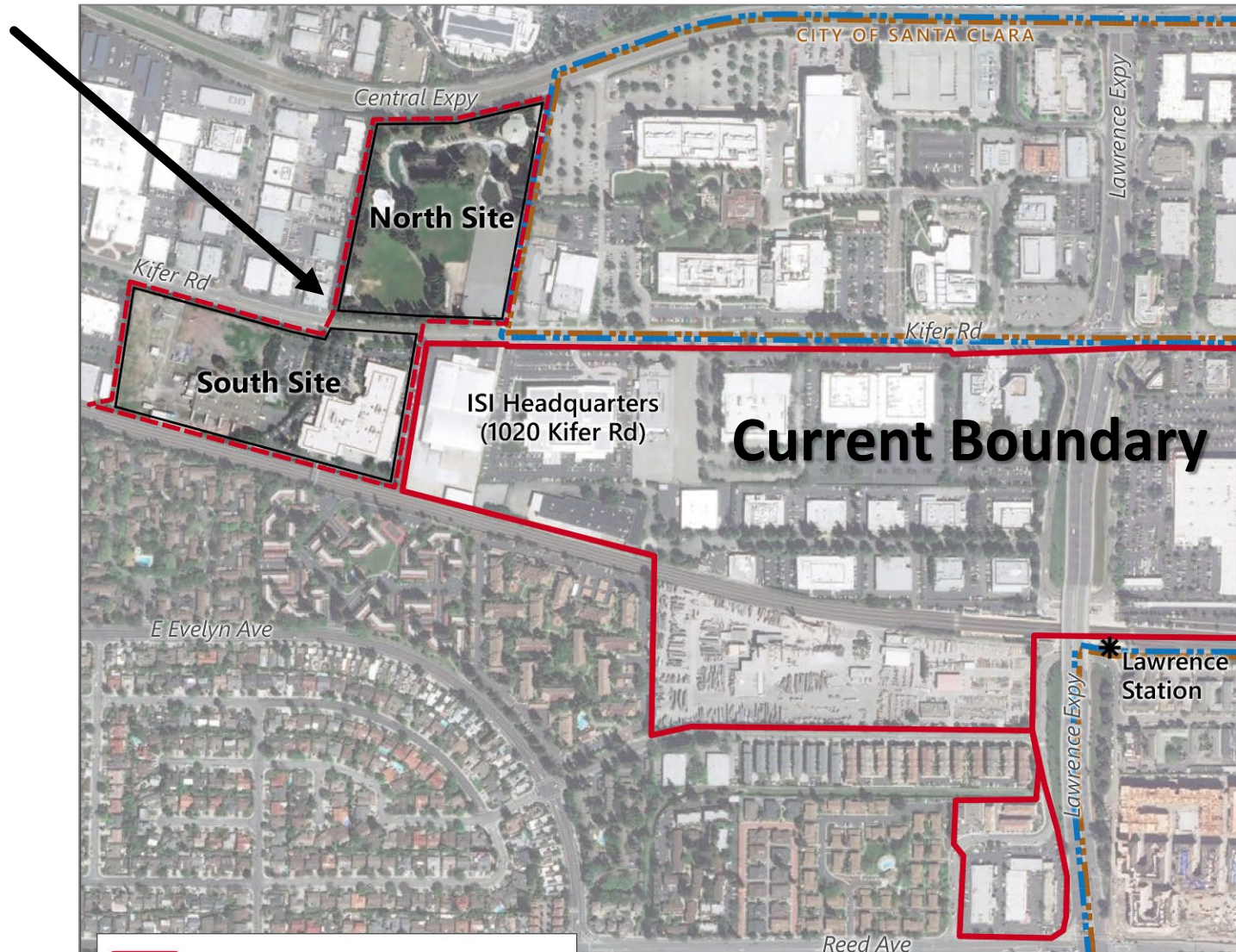
City of Sunnyvale Planning Division  
June 22, 2020

# Background

---

- Sites adjacent to Lawrence Station Area Plan boundary
- Council action, August 2018:
  - ◆ Study expansion of boundary to include sites
  - ◆ Add pedestrian/bicycle route to the station
  - ◆ Preserve trees and open space on the north site
- Boundary expansion part of ongoing LSAP update

# Boundary Expansion



# LSAP Update

---

- 5,935 total housing units (+ 3,612 over existing)
- Sense of Place Plan
- No increase to LSAP office/R&D capacity
  - ◆ Proposed project to draw from existing balance
- Project subject to LSAP Development Incentives



# Project Description

- 1.211m total s.f.
  - 847k – north site
  - 364k – south site
- Office, R&D, manufacturing
- Amenity space
- Structured parking
- Pedestrian bridge over Kifer
- Public Class I trail



# Tree Removals and Replacement

---

- Two City Arborist site walks
- North site
  - ◆ Removal of 98 protected-size trees
  - ◆ Planting 229 new trees
- South site
  - ◆ Removal of 143 protected-size trees
  - ◆ Planting 374 new trees



# North Building from Kifer Road



# South Building from Kifer Road





# Current Progress on South Parking Structure



# Consistency with LSAP Vision

---

- Employment center near transit
- Growth of existing business
- Preservation of open space and trees
- Provides community benefits
  - ◆ Class I trail to Lawrence Station
  - ◆ Frontage and Sense of Place improvements
  - ◆ Green infrastructure
  - ◆ Bus stop improvements