



City of Sunnyvale

Agenda Item

20-0177

Agenda Date: 1/15/2020

REPORT TO ARTS COMMISSION

SUBJECT

Review and Recommendation of Public Art - Fair Oaks Park Renovation

BACKGROUND

Fair Oaks Park is a 15-acre community park originally built in 1969. It is centrally located within the City and currently includes multi-use fields, picnic areas, basketball and volleyball courts, and a playground and skate park (Attachment 1 - Vicinity Map).

The proposed renovation was approved by City Council on Oct. 16, 2018 (RTC 18- 0646). The new design ensures the park's sustainability by enhancing recreational uses, increasing attractiveness and improving accessibility for all park users. Additionally, this renovation includes replacing the athletic fields with the City's first synthetic turf field, renovating the picnic areas and park amenities, lighting upgrades, ADA improvements, a more water efficient feature, replacing the basketball courts, a new restroom facility, and installing an inclusive playground developed in partnership with the Magical Bridge Foundation.

Subject to Council Policy 6.4.4 - Art in Public Places (AIPP), the renovation will also incorporate a 1 percent expenditure for public art at an estimated \$140,000.

A Request for Qualifications was distributed through public art websites, artist networks and the City website inviting California artists to apply for the commission. A total of 16 artists applied for the commission. An eight-member community selection panel including art professionals and project staff was convened to evaluate the qualifications of the artists (Attachment 2 - Call for Artists). Through a juried process, a list of five artists was established. Those artists were invited to develop a detailed conceptual design proposal incorporating the park's "Old English" theme.

This report provides information on the five conceptual design proposals. The Arts Commission is being asked to review and rank the conceptual design proposals. The Commission's recommendation will be forwarded to City Council on Feb. 25, 2020 for consideration and final approval.

Following City Council's approval, staff will work with the selected artist to finalize details, including exact location and engineering of the art, as well as developing a community workshop to highlight the art. Details of the final design will be presented to the Arts Commission and City Council as an informational item at a future date.

EXISTING POLICY

Sunnyvale Municipal Code 19.52 - Art in Private Development

Sunnyvale Council Policy 6.4.4 - Art in Public Places

20-0177

Agenda Date: 1/15/2020

ENVIRONMENTAL REVIEW

The project is exempt from environmental review pursuant to CEQA Guidelines section 15302, as it consists of renovation and enhancement of existing park facilities, and all proposed renovations and enhancements would occur within the boundary of the existing park, resulting in negligible to no expansion of existing use.

DISCUSSION

Selected Locations

Possible public art locations identified by the project committee are (Attachment 3 - Site Plan with Art Locations):

1. Dog park: A 13,500-square feet area with seating surrounded by chain-link fencing. Possible artwork could be benches, free-standing sculpture(s) or fence enhancement.
2. Walkway markers: A concrete walking path surround the new athletic fields including five mileage markers. Possible art elements could include ground level markers.
3. Green space at Wolfe Road: Existing open space suitable for interactive, free-standing or functional public art.
4. Green space adjacent to park building: Existing open space suitable for interactive, free-standing or functional public art. Treatments for the planter walls can also be considered.
5. Picnic area entrance: Gateway marker(s).

Conceptual Art Proposals

Proposal #1 was submitted by the North San Juan artistic team Faducci (Attachment 4 - Faducci Resume and Design Proposal). Faducci's proposal consists of three hand sculpted cement statues and five etched granite markers. The statues will be constructed with a steel armature covered with hand-sculpted colored concrete and secured to an 18-inch concrete pad. They will reside in the open space along Wolfe Road:

- *Old English Sheep Dog* with an Elizabethan collar and buckle shoes measuring 6-feet, 6-inches tall by 6-feet, 6-inches wide by 4-feet, 6-inches deep.
- *Knight in Armor* with raised sword. The face of the sculpture will be open and rear steps and handholds will be incorporated to accommodate interactive photo opportunities. The sculpture will stand 6-feet tall by 3-feet 6-inches wide by 2-feet deep.
- *Elizabethan Woman* in peasant dress. The face of the sculpture will be open and rear steps and handholds will be incorporated to accommodate interactive photo opportunities. The sculpture will stand 5-feet, 6-inches tall by 3-feet wide by 2-feet deep.

The five granite markers will be integrated at intervals into the walking path surrounding the athletic field. Measuring 24-inches square, each marker will be etched with a quotation from Shakespeare:

- "All is well that ends well"
- "Better three hours too soon than a minute too late"
- "The wheel is come full circle, I am here"

20-0177

Agenda Date: 1/15/2020

- “Wisely and slow; they stumble that run fast”
- “Now bid me run and I will strive with things impossible”

Maintenance of the sculptures and markers will consist of washing with mild soap and a nylon brush annually. A top coat of concrete sealer will also be applied to protect the art and guard against graffiti as needed.

For more information on Faducci and to see more of their work, visit faducci.com.

Proposal #2 was submitted by Richmond artist Archie Held (Attachment 5 - Held Resume and Design Proposal). Mr. Held is proposing a colorful castle structure to represent the park's "Old English" theme. It will stand 18-feet tall by 7-feet, 6-inches deep by 20-feet wide and will be installed in the open space along Wolfe Road. The castle will be fabricated with a strong industrial stainless steel mesh and the towers will be capped with aluminum. The small mesh size will prevent climbing on the structure, but the 4-feet 6-inch gate in the center of the structure will remain open to encourage park users to walk through. The entire sculpture will be powder coated in vivid colors with a clear coating to protect the paint and deter graffiti.

Maintenance will be minimal, requiring a semiannual rinsing with touch-up paint and sealing as needed.

For more information on Archie Held and to see more of his work, visit archieheld.com.

Proposal #3 was submitted by Pacifica artist Cork Marcheschi (Attachment 6 - Marcheschi Resume and Design Proposal). Mr. Marcheschi is proposing a grouping of two abstract sculptures supported by a single aluminum pole. Each sculpture will contain several colorful, playful elements fabricated from aluminum and plastic, and illuminated by LED lights. The geometric elements were inspired by examples of British heraldry and decorative pennants. The sculptures will measure 16- to 20-feet tall and will be installed in the open space along Wolfe Road.

For more information on Cork Marcheschi and to see more of his work, visit corkmarcheschi.net.

Proposal #4 was submitted by San Jose sculptor James Moore (Attachment 7 - Moore Resume and Design Proposal). Mr. Moore is proposing a grouping of five sculptures placed in the open space along Wolfe Road. Each of the sculptures was designed with the themes of "movement" and "play" to represent human figures enjoying activities prominent in the park (basketball, soccer, baseball). The sculptures will vary in height, the tallest figure standing 10-feet tall and the shortest figure standing 6.5-feet tall. They will be secured to a 5-feet square base and anchored with concrete pilings below grade. Fabricated in aluminum, the sculptures will be treated with a metal dye to give it the appearance of pewter, connecting its contemporary style with the "Old English" theme of the park. The faces of the figures and the sports balls will be painted in primary colors (red, yellow and blue) using high-grade automotive paint to set them apart from the antiqued metal bodies. These elements will also be coated with a clear protective coat for protection and easy maintenance.

Maintenance will consist of annual rinsing and a reapplication of the color or clear coat when needed.

For more information on James Moore and to see more of his work, visit jamesmooresculpture.com.

20-0177

Agenda Date: 1/15/2020

Proposal #5 was submitted by Emeryville sculptor, Vickie Jo Sowell (Attachment 8 - Sowell Resume and Design Proposal). Ms. Sowell is proposing a large-scale sculpture entitled *To Bee, or not to Be*, which will be installed in an interior location along an entry pathway from Wolfe Road, among planters and existing landscaping. Fabricated with stainless steel and patinaed with an antique silver and black finish, the sculpture will stand 15-feet at its highest point, by 20-feet wide, by 12-feet deep. The sculpture is designed to celebrate the presence and importance of bees and pollination in our native surroundings and there will be three main elements to the sculpture:

- Steel spiral: This part of the sculpture includes an eye level, oversized bumble bee sitting on a spiral that seemingly follows the path the bumble bee might take, looping skyward and back in a circle, nearby a large, oversized sunflower. The center of the flower is adorned with an antique lace pattern in reference to the park's "Old English" theme.
- Standalone bumble bee: Situated adjacent to the spiral is another bumble bee, although this one is more human-scaled, measuring 5-feet long by 3-feet, 6-inches tall with a wingspan of 10-feet, 6-inches wide. Antique patterned cutouts line the side of the bee and its wings.
- Blossom: A smaller stainless steel blossom sits alongside with informational signage providing a written narrative about the native species of bees and their role in pollination in an urban setting. QR codes connect viewers to further resources.

The sculpture elements are arranged in an open triangle to invite viewers to move through and interact with the artwork.

Maintenance will entail annual rinsing and polishing.

For more information on Vicki Jo Sowell and to see more of her work, visit unrulyimages.com.

FISCAL IMPACT

A total of \$140,000 is required for public art in the Fair Oaks Park Renovation Project (#830340). \$135,000 has been allocated for the acquisition and installation of the artwork and \$5,000 has been allocated for design fee stipends.

On-going maintenance for this project will require an estimated \$1,000-\$2,500 per year, which can be allocated as a part of the Permanent Art Collection annual maintenance.

PUBLIC CONTACT

Public contact was made through posting of the Arts Commission agenda on the City's official-notice bulletin board, on the City's website, and the availability of the agenda and report in the Office of the City Clerk.

RECOMMENDATION

There is no staff recommendation for this project. Per the Art in Public Places procedures, the Arts Commission is authorized to rank the proposals and develop a recommendation to the City Council for consideration and final approval. Additionally, the approved design proposal will be further developed with oversight from staff to meet the Art in Public Places guidelines within the allocated budget.

20-0177

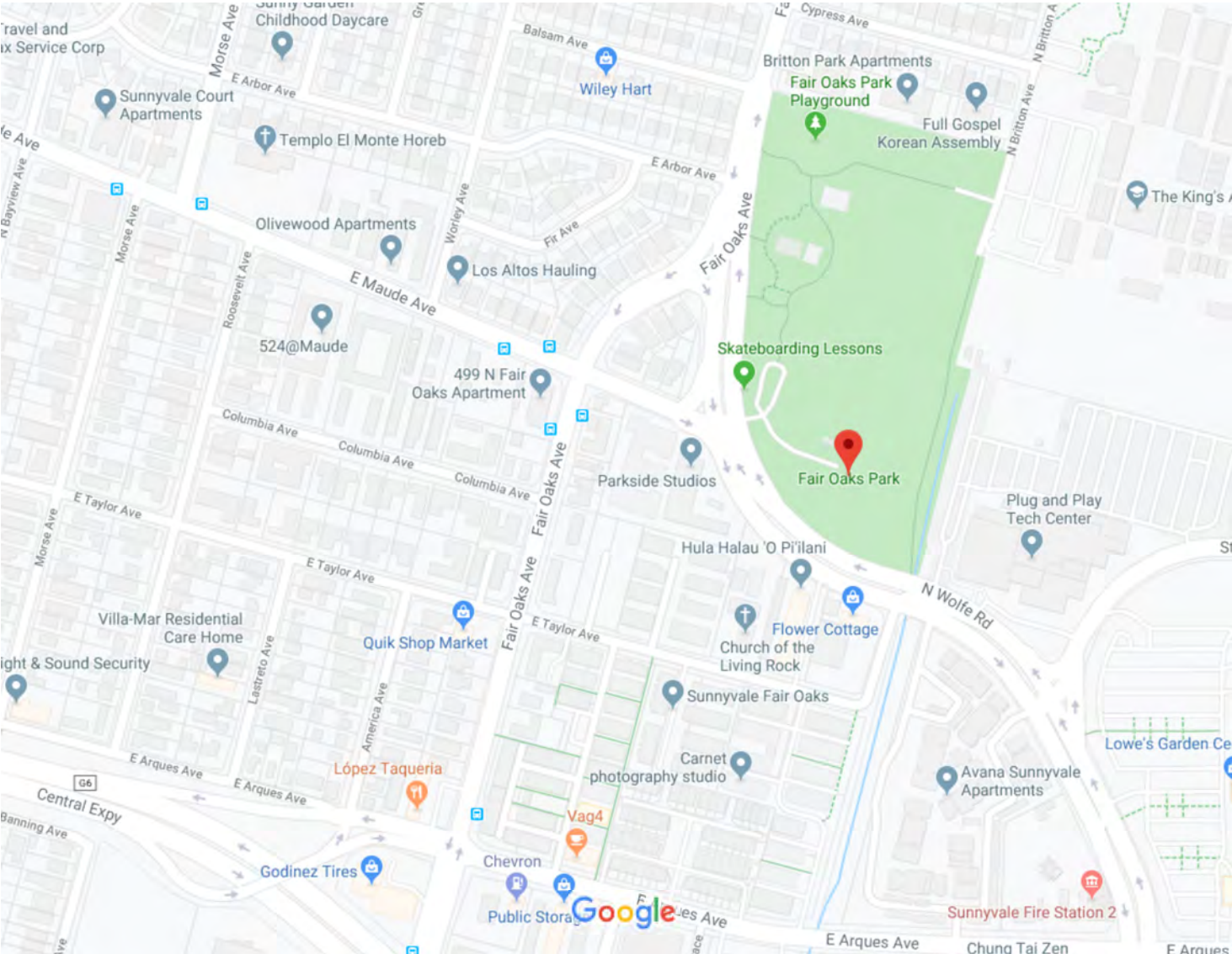
Agenda Date: 1/15/2020

Prepared by: Kristin Dance, Community Services Coordinator II
Reviewed by: Trenton Hill, Community Services Manager
Reviewed by: Damon Sparacino, Superintendent of Community Services
Approved by: Cherise Brandell, Director of Library and Community Services

ATTACHMENTS

1. Vicinity Map
2. Call for Artists
3. Site Plan with Art Locations
4. Faducci Resume and Design Proposal
5. Held Resume and Design Proposal
6. Marcheschi Resume and Design Proposal
7. Moore Resume and Design Proposal
8. Sowell Resume and Design Proposal

Google Maps Fair Oaks Park





Sunnyvale

CALL FOR ARTISTS

Public Art - Request for Qualifications (RFQ)

Fair Oaks Park Renovation

Deadline for Submissions: Oct. 14, 2019

Call for Artists

Under the City of Sunnyvale's Art in Public Places program, the Fair Oaks Park renovation project is required to include public art. The City of Sunnyvale seeks to commission an artist, or team of artists, to design and execute an original work of art(s) for the park grounds.

Sunnyvale Overview

The City of Sunnyvale is in the heart of Silicon Valley in Northern California. Twenty-four square miles, Sunnyvale is the second largest city in Santa Clara County and the seventh largest city in the San Francisco Bay Area. The City has a population of 155,567 and daytime workforce of 118,500 people. Almost 8,000 local businesses provide a rich mixture of goods and services, including many icons in tech, manufacturing, retail and R&D and some of the nation's most successful business and industrial leaders are headquartered in Sunnyvale, including LinkedIn, Yahoo!, AMD, NetApp, Nokia, 23andMe, Juniper Networks, National Semiconductor and Lockheed Martin.

Sunnyvale is also known for its innovative Public Safety Department concept, business-friendly environment, quiet family neighborhoods, cultural arts programming, historical shopping district, year-round farmer's market and full-service library. The City's park system includes 772 acres of parks and open space located in neighborhoods throughout the City and includes facilities for recreation, golf, tennis and swimming. Each park has been created with a theme in mind to stimulate creative interaction and play for park users and to distinguish the various neighborhoods from each other. Current park themes include prehistoric, Polynesian, Japanese gardens and island adventure.

Site and Project Description

Fair Oaks Park is in North Sunnyvale at 540 N. Fair Oaks Ave. The park, built in 1969, is a 15.3-acre area that includes multi-use fields, picnic areas, basketball courts, a volleyball court, playground and a skate park. The park's theme is "Old English."

The approved Fair Oaks Park renovation is intended to ensure the park's sustainability for the future by enhancing recreational usability, increasing attractiveness and improving accessibility for all potential park users. The project includes replacement of the athletic fields with synthetic turf, renovation of the picnic areas and park amenities, upgrades to existing lighting,¹ ADA improvements, replacement of the water play feature with a more water efficient feature, replacement of the basketball courts, a new restroom facility, a new parking lot and the

addition of a dog park. The project will also feature an all-inclusive 240 square foot playground designed by the Magical Bridge Foundation.

Project Budget

Project Budget	\$140,000
Semi-finalist Design Honorarium (2-5 artists)	\$1,000 per artist

The project budget is all-inclusive of project costs, including artist's fees and expenses, taxes, materials, permit fees, travel, shipping and crating, insurance fees, site preparation, fabrication/installation or execution of the artwork.

Artist Eligibility

This Request for Qualifications is open to all professional and emerging artists residing in California. Bay Area artists are especially encouraged to apply. Entries not meeting eligibility requirements will be withdrawn from consideration.

Estimated Schedule (dates subject to change)

Entry Deadline	Oct. 14, 2019
Notification of semi-finalists/Invitation to submit Final Design Proposal	Oct. 18, 2019
Final Design Proposal Deadline (semi-finalists)	Nov. 18, 2019
Arts Commission Review	January 2020
City Council Review and Approval	February 2020
Contract Development	February - March 2020
Fabrication of Artwork	March - May 2020
Installation of Artwork	May - June 2020

Artwork Location

Project staff has identified several locations for public art. Artists may choose a single location, or multiple locations, and should indicate in their Letter of Interest which location(s) they are electing to place their artwork (Attachment 2 – Site Plan).

1. **Dog park:** This area is 13,500-square feet (approximately 190 by 72 feet) that includes seating and a drinking fountain. The large dog area is surrounded by a 6-foot-tall (383 linear feet) chain-link fence. The small dog area is surrounded by a 42-inch-tall (227 linear feet) chain-link fence. Possible artwork could be benches, free-standing sculpture(s) or a fence treatment. It should be noted that art proposed for this area should be able to sustain dog urine in addition to normal environmental conditions.

2. **Walkway markers:** Surrounding the new athletic fields is a .44-mile concrete walking path. The pathway design includes five mileage markers, which could be denoted through public art elements. Markers must be ground level and no more than 2 foot in diameter. Each marker should indicate the distance traveled from a starting point, in each direction and can include other words or images.
3. **Green space at Wolfe Road:** This existing grass area is suitable for interactive, free-standing or functional public art. The area is approximately 51 by 66 feet, or 3,300 square feet.
4. **Green space adjacent to park building:** This existing grass area and adjacent planters are suitable for interactive, free-standing or functional public art. Treatments for the planter walls can also be considered. The grass area is approximately 38 by 60 feet, or 1,990 square feet.
5. **Picnic area entrance:** The park renovation includes a redesigned 16 by 15 foot, or 240 square foot, picnic area. The entrance to the picnic area can accommodate a gateway marker(s) approximately 15-16 feet in width.

Artist Responsibilities

The selected artist or artistic team will be expected to work with City staff to develop the specific parameters of the public art component, as well as implement all aspects of the project. These specifics will include:

- Developing the final design proposal
- Selecting appropriate artistic materials for the design
- Leading a community project associated with the final design
- Developing a final project timeline
- Attending meetings with city staff as necessary
- Presenting the project to the City's Arts Commission and City Council for approval
- Obtaining all required permits for installation of the artwork
- Complying with federal, state and local rules and regulations related to prevailing wage
- Obtaining appropriate insurance for the artwork until City has accepted the artwork
- Fabrication/installation or execution of the artwork
- Delivery of the artwork to Fair Oaks Park
- Providing detailed instructions for the preservation of the artwork
- Providing detailed documentation on the engineering, execution or installation of the artwork, including MSDS sheets
- Abiding by all requirements of the artist's contract with the City

The selected artist or artistic team will be expected to reference the park's *Old English* theme in their artistic design. The final proposal will also need to be appropriate for all ages of the

community, align with the City's vision of inclusion and diversity, and represent the City's brand: *Bold, Sustainable Innovation*.

Selection Process

A five- to nine-person selection panel will review the submitted applications. The panel will evaluate applications on the following criteria:

- Originality of artistic style
- Type of artwork proposed
- Ability of the artwork to withstand outdoor conditions
- Maintenance requirements
- Artist's experience with public art commissions and working within the public process
- Artist's experience with art projects of a similar size and scope
- Alignment with the City's vision of diversity and inclusion, innovation and sustainability

The selection panel will consist of representatives from the City's Department of Public Works, Department of Library and Community Services, project designers, representatives of the Fair Oaks and Washington Park neighborhoods, and artists/arts professionals.

A short list of up to five artists will be created by the selection panel and these artists will be asked to develop a design proposal. A design stipend of \$1,000 will be paid to each of the short-listed artists upon completion of their design proposal. Short listed artists are strongly encouraged to visit the park site prior to submitting a final design, however, any travel costs associated with the visit will be the sole responsibility of the artist.

The final design proposals will be presented to the City's Arts Commission for review. The commission will be asked to rank the design proposals, and the results of the rankings will be presented to the City Council for final selection of the public art design/artist.

Submission Requirements

To apply for this call, please submit the following items:

- Completed Coversheet (Use form provided at the end of this application)
- Resume
- Professional references (minimum of 2)
- Artist statement
- Letter of interest (1-2 pages), including an outline of your qualifications and relevant experience, interest in this project and a general approach to this project
- 6-10 images of previous works
- Annotated image descriptions, including title, date, location, materials, art budget, and a brief description (up to 5 sentences). For team application, please indicate the lead artist for each project
- **Optional:** A rough sketch of a proposed design can be included, but is not required. Artists will not be held to, nor reimbursed for, any preliminary sketches

All applications must be received by Monday, Oct. 14, 2019. Incomplete submissions will not be considered. It is the responsibility of the applicant to verify the receipt of their application by the scheduled deadline. Electronic versions may be delivered via email, file sharing website or on a thumb drive. Thumb drives will not be returned.

Materials may be submitted electronically to the City of Sunnyvale Public Art Coordinator, Kristin Dance, at kdance@sunnyvale.ca.gov or in person at the Sunnyvale Community Center, 550 E. Remington Drive, Sunnyvale 94087. Images must be in JPEG or PDF format.

Award of Contract

The City of Sunnyvale reserves the right to accept or reject any submittals and to alter or extend the selection process as needed.

This RFQ and the selection process shall in no way be deemed as a binding contract or agreement of any kind between the City and the artist. Award of a contract is contingent upon approval of the City's selection panel, Arts Commission and City Council. Artists and artist teams selected and approved will contract with the City for the entire duration of the project. The selected artist will be required to secure and maintain various types of insurance, including Automobile Liability, General Liability and other insurance as needed (Attachment 3).

The artwork commissioned for this project shall become the property of the City of Sunnyvale. The artwork will be maintained as part of the City's permanent art collection. The City shall have no obligation to display the artwork for any particular period or in perpetuity.

For More Information or Questions

Please contact the City of Sunnyvale Public Art Coordinator, Kristin Dance, at 408-730-7758 or kdance@sunnyvale.ca.gov. Questions will be compiled into a single list with responses and made available to all interested parties upon request.



Fair Oaks Park Renovation

QUALIFICATIONS COVERSHEET

Qualifications will not be accepted after Monday, Oct. 14, 2019.

Artist: _____

Address: _____

City: _____ **State:** _____ **Zip:** _____

Phone: _____ **Fax:** _____

Email: _____ **Website:** _____

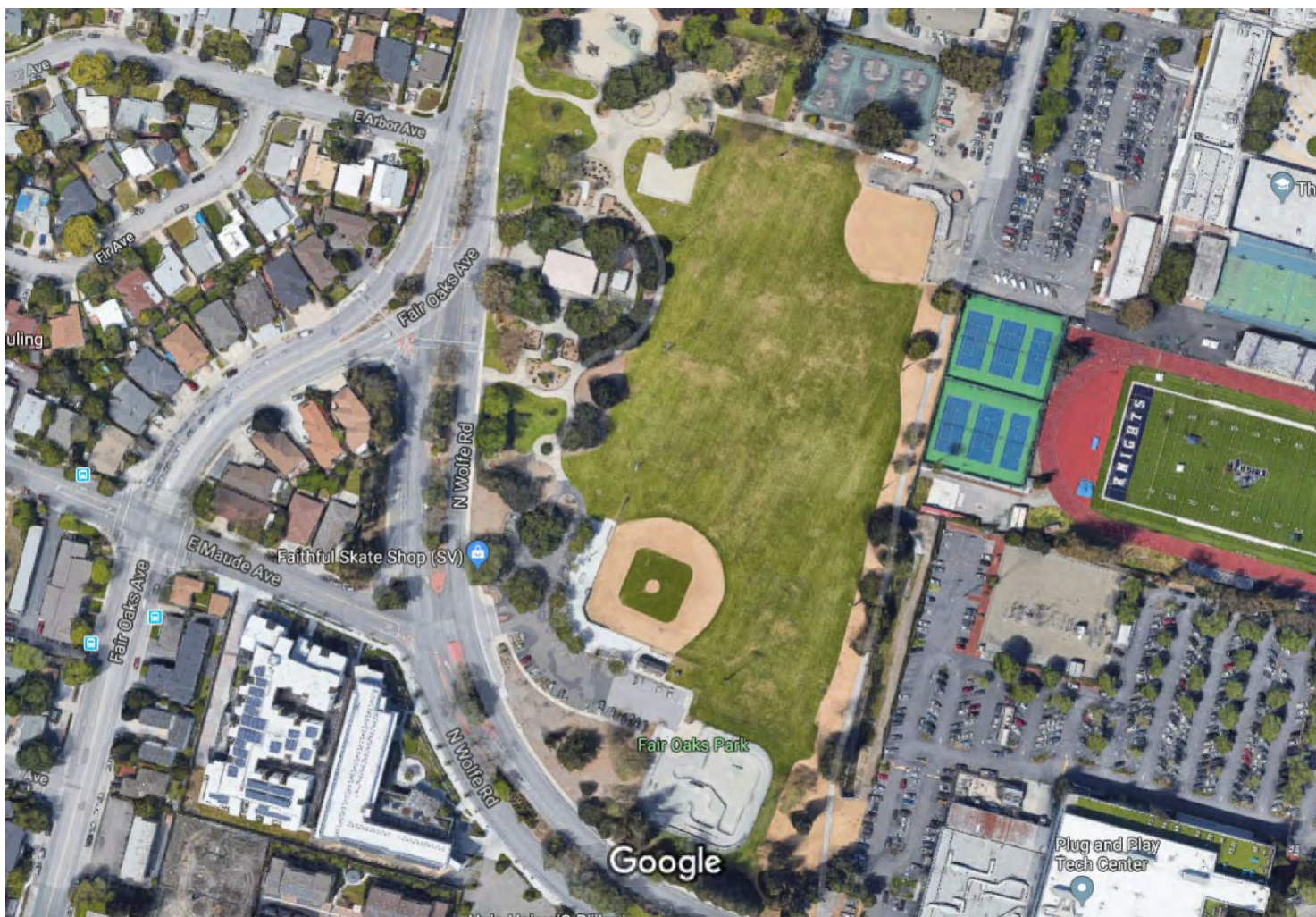
Signature of Artist: _____

Date: _____

Special Note for Artist Teams:

If multiple artists are applying as a team, please provide this coversheet and a resume for each member of the team, and clearly designate one artist as the primary contact. Teams that do not have 12 images of past work done together may round out the images with the work of individual team members.

Google Maps



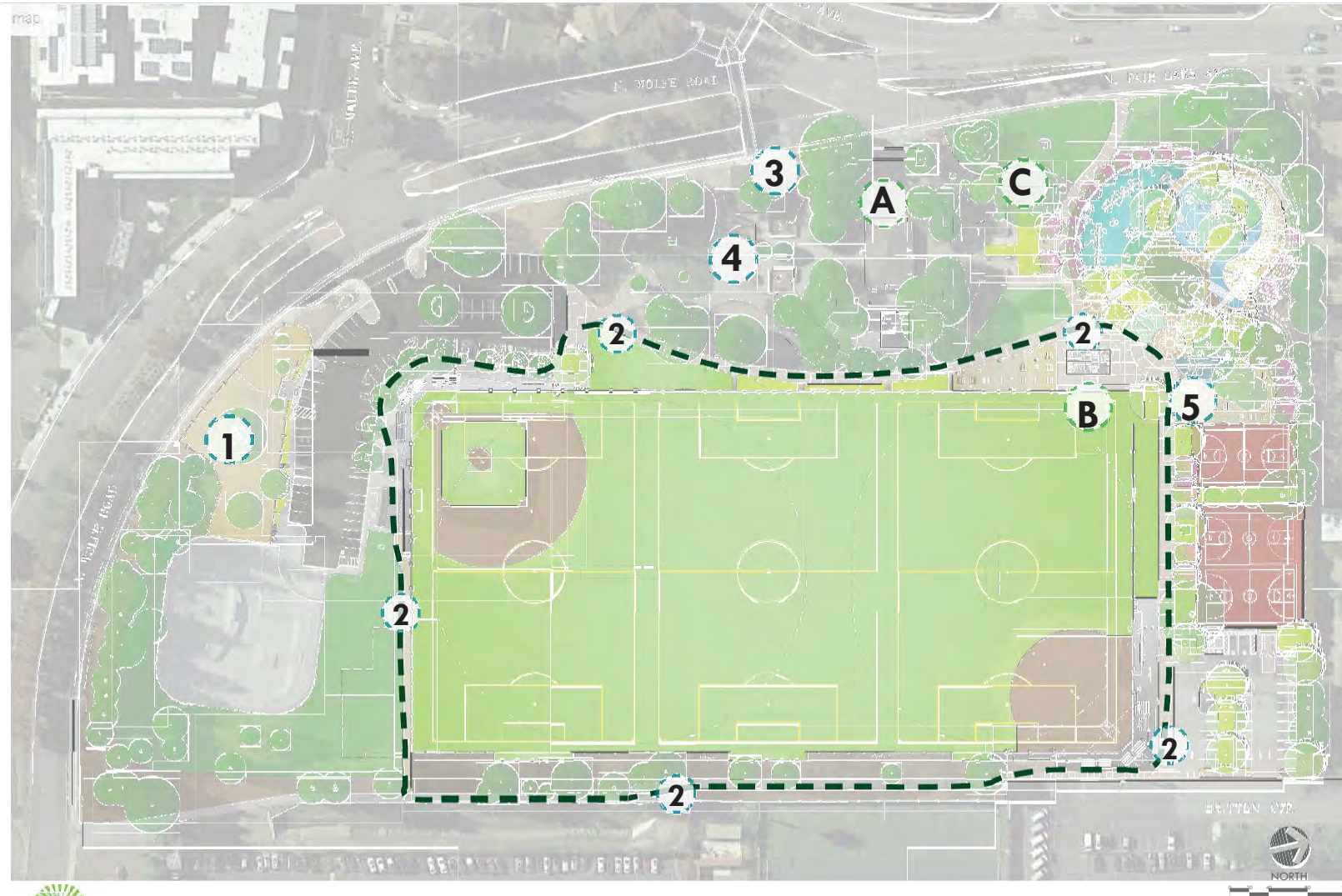
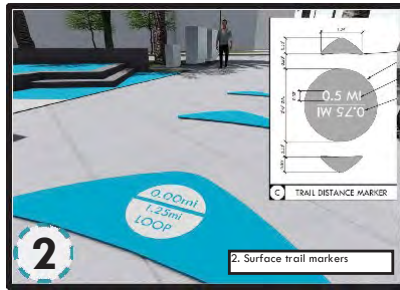
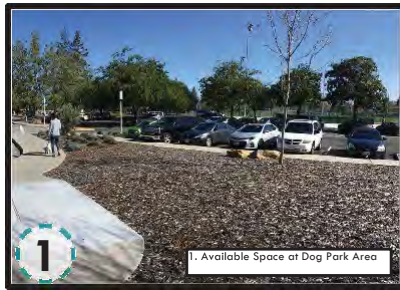


EXHIBIT INSURANCE REQUIREMENTS FOR ARTIST CONTRACTS

Artist shall procure and maintain for the duration of the contract insurance against claims for injuries to persons or damages to property which may arise from or in connection with the performance of the work by the Artist, his agents, representatives, or employees.

Minimum Scope and Limits of Insurance Artist shall maintain limits no less than:

1. **Commercial General Liability**: \$1,000,000 per occurrence and \$2,000,000 aggregate for bodily injury, personal injury and property damage. ISO Occurrence Form CG 0001 or equivalent is required.
2. **Automobile Liability**: \$1,000,000 per accident for bodily injury and property damage. ISO Form CA 0001 or equivalent is required.
3. **Workers' Compensation** Statutory Limits and **Employer's Liability**: \$1,000,000 per accident for bodily injury or disease.

Deductibles and Self-Insured Retentions

Any deductibles or self-insured retentions must be declared and approved by the City of Sunnyvale. The artist shall guarantee payment of any losses and related investigations, claim administration and defense expenses within the deductible or self-insured retention.

Other Insurance Provisions

The **general liability** policy shall contain, or be endorsed to contain, the following provisions:

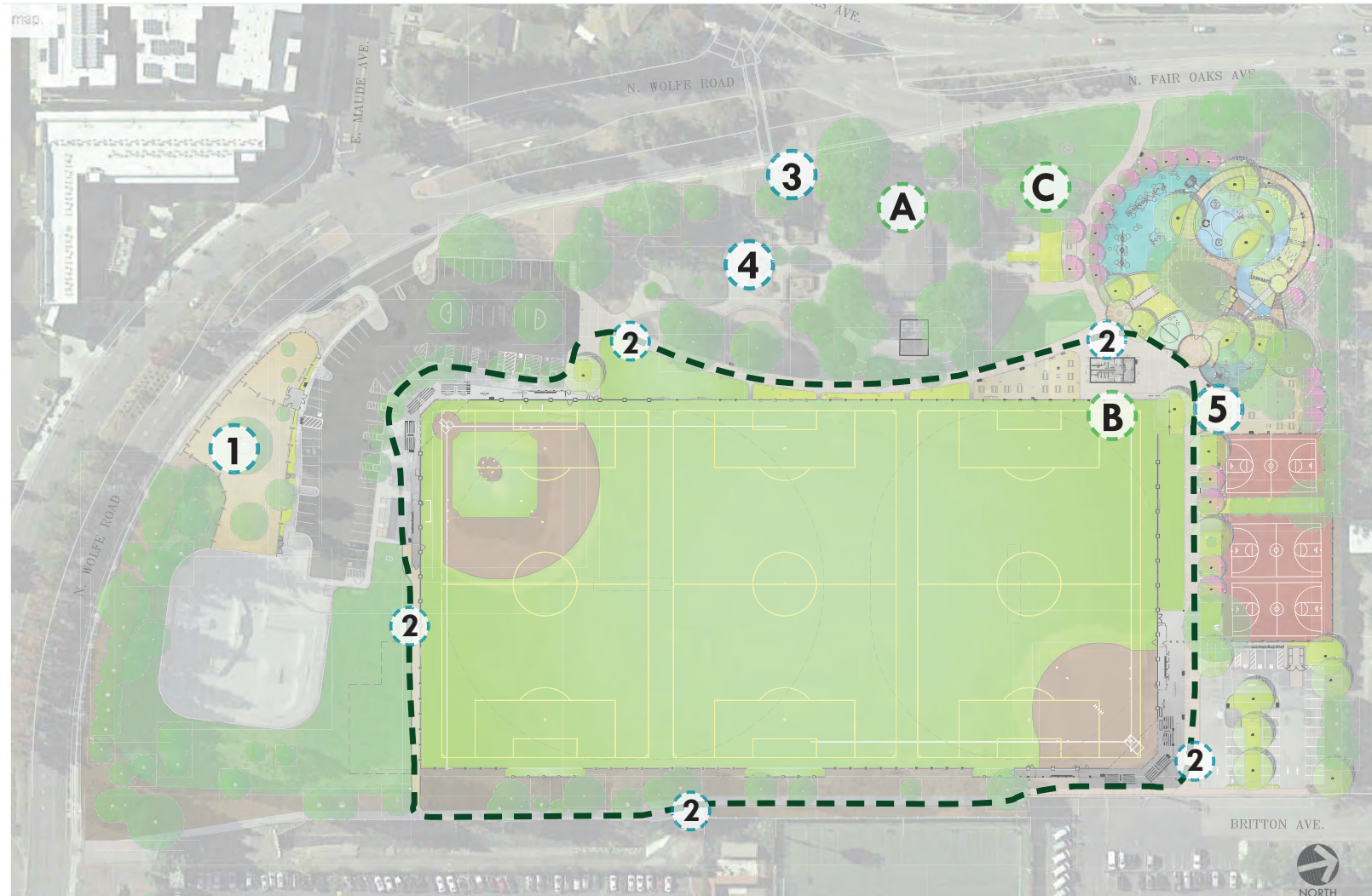
1. The City of Sunnyvale, its officials, employees, agents and volunteers are to be covered as additional insureds with respects to liability arising out of activities performed by or on behalf of the Artist; products and completed operations of the Artist; premises owned, occupied or used by the Artist; or automobiles owned, leased, hired or borrowed by the Artist. The coverage shall contain no special limitations on the scope of protection afforded to the City of Sunnyvale, its officers, employees, agents or volunteers.
2. For any claims related to this project, the Artist's insurance shall be primary. Any insurance or self-insurance maintained by the City of Sunnyvale, its officers, officials, employees, agents and volunteers shall be excess of the Artist's insurance and shall not contribute with it.
3. Any failure to comply with reporting or other provisions of the policies including breaches of warranties shall not affect coverage provided to the City of Sunnyvale, its officers, officials, employees, agents or volunteers.
4. The Artist's insurance shall apply separately to each insured against whom claim is made or suit is brought, except with respect to the limits of the insurer's liability.
5. Each insurance policy required by this clause shall be endorsed to state that coverage shall not be suspended, voided, cancelled by either party, reduced in coverage or in limits except after thirty (30) days' prior written notice by certified mail, return receipt requested, has been given to the City of Sunnyvale.

Acceptability of Insurers

Insurance is to be placed with insurers with a current A.M. Best's rating of not less than A:VII, unless otherwise acceptable to the City of Sunnyvale.

Verification of Coverage

Artist shall furnish the City of Sunnyvale with original a Certificate of Insurance effecting the coverage required. The certificates are to be signed by a person authorized by that insurer to bind coverage on its behalf. All certificates are to be received and approved by the City of Sunnyvale prior to commencement of work.



ART OPPORTUNITIES AT FAIR OAKS PARK

540 NORTH FAIR OAKS AVENUE, SUNNYVALE, CA 94085

Faducci LLC.

Solomon Bassoff & Domenica Mottarella
PO Box 923 North San Juan CA. 95960
530 292-3857 www.faducci.com

Resume

Public Art Commissions

Pearson Acres Park, Frisco, Texas – Cows, 2020 installed
Coronado Animal Care Facility, Coronado, CA. – Dog, 2 Cats, 2019
Tuli Mem Park, Esparto, CA. – Blue Heron 2019
Placer SPCA, Auburn, CA. - Concrete Chairs for Adoption Rooms, 2018
Creative Waco, Entrance to Cameron Park Zoo, Waco, TX. – Giraffe,
Orangutans, African Lion, Bengal Tiger, Spiny Lizard, White Rhino, 2018
Murch Elementary School, Washington DC – Bears, 2018
City of Kingman, Arizona, Route 66 – Arizona Chuckwalla Lizard, 2018
Lucille Packard Children's Hospital, Palo Alto, CA.- Dinosaurs with Bunny
Slippers, 2017
River Terrace Special Education Center, Washington D.C.- Painted Turtle with
Eggs and Drums- 2015
Children's Hospital Central California, Madera, CA. – 2 Commissioned
Sculptures, Holstein Cow and Dog and Frog on Water and Rock, 2015
City of Manhattan Beach, CA.- "Totem", 2014
City of Los Gatos, CA.- 10 Cats in Trees, 2014
Northwest Library, Oklahoma City, OK- Cowgirl w/dog, Dinosaur, Lizard,
Raccoon, 2012
Peninsula Humane Society- Center for Compassion, Burlingame, CA- Fountain
Busts, Sculpture elements and Concrete Chairs for Adoption Rooms, 2010
Davis Central Park Gardens, Davis, CA.- "Bellapede" Play Sculpture 2010
Dr. Avery, Veterinarian, Grass Valley, CA.- Bas-Relief of Dogs and Cats 2010
Southside Community Garden, Sacramento, CA.- Gate and Garland Arch 2009
Turtle Bay Exploration Park, Sundial Bridge, Redding, CA.-Sunflowers and Bugs
2007
Woodland Park Zoo- Seattle, WA. Life-size Komodo dragon, 2007
City of Sacramento, CA.- Hummingbird Park, Field of Sunflowers, 2005
Paradise Bay Restaurant- Sausalito, CA. Table and Sunflowers, 2003
George Mark Children's Hospice- San Leandro, CA. Big Frog, 2003
Encompass Family Center- Children's Play Area, Nevada City, CA 2000

Exhibitions

Society of American Mosaic Artists & Museo ItaloAmericano- Opus Veritas
Exploding Head Gallery- "InsideOut" July 10-August 2, 2003
Trios Gallery- "Sculpt Your Garden" May 3-31, 2000, Invitational Show 15th, 2003
The Imaginarium of Nevada County- "Bugs & Butterflies" August 29, 2002
North Columbia School House Cultural Center- April 1-30, 2002 "Best of Show"

Publications

Northwest Artisan- Published 2006, Featured Artist
Array Magazine- New York School of Design May 2004
San Francisco Chronicle, San Francisco-September 11, 2003 Interview
ConcreteNetwork.com, Online- August 2003, Interview
Decor & Style Magazine, San Diego- August 2003, Interview
Union Newspaper, Grass Valley- December 4, 2003

Book Publications

Mosaic Art Today, Schiffer Publishing Ltd., - Published 2012
 Best of Presents America Sculpture Artist III- Kennedy Publishing-Published 2012
 Mosaic Renaissance: Millefiori in Mosaics- Laurel Skye- Published 2009
 Designing & Living with Glass Tile- Patricia McMillan- Published 2009
 Mosaic: Finding Your Own Voice- Brit Hammer- Published 2008
 Creative Concrete Ornaments for the Garden, Sherri Hunter- Published 2005
 Mosaic Style, Sterling Press- Jo Ann Locktov- Published 2005 Featured Artist

Memberships

Society of American Mosaic Artists
 American Craft Council

Experience- Solomon Bassoff

1998- Present Concrete & Mosaic Artist

1976- 1998 Developer and Contractor

- Supervised craftsmen and sub-contractors
- Worked with architects and engineers to develop projects
- Presented proposals to city planning staff and city council

1970-1976 Art Supervisor and Coordinator

- Arts & Crafts Director at Hess Kramer, Gindling Hilltop and Swig Camps
- Worked with families and children to build brick, concrete and mosaic buildings and sculpture- Encompass Family Center

Education- Solomon Bassoff

1976- 1978 University of Santa Cruz- Studies in Sculpture, Wood, Steel, Clay and Bronze

1975- University of Irvine- B.A. Art Therapy

Experience- Domenica Mottarella

2000-Present Cement & Mosaic Artist

1987-1992 Designs By Nika Tee Shirt Design Co.

1982-1987 Blue Goose Pottery

1985-1987 Soft Sculpture Design

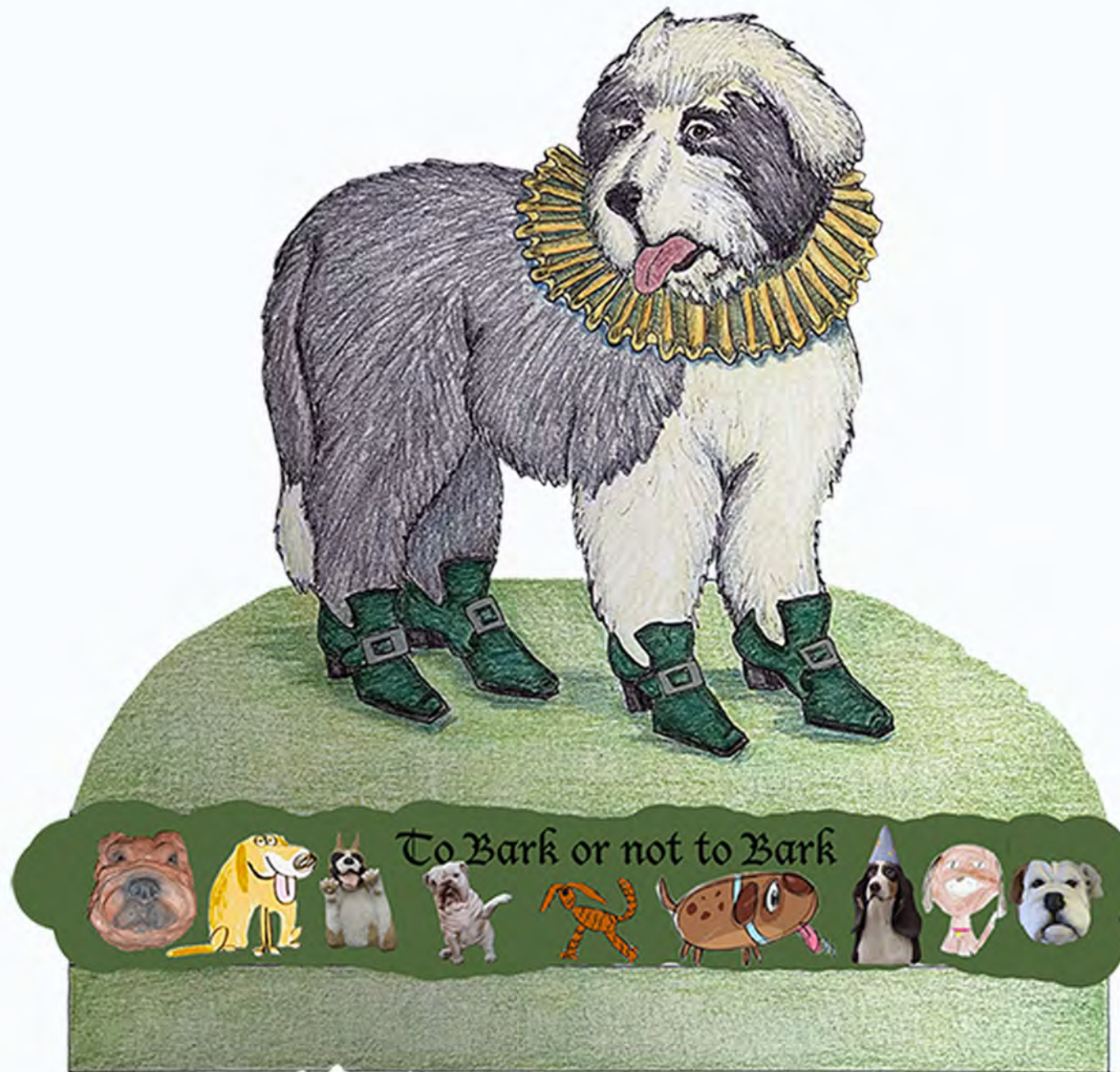
Education- Domenica Mottarella

1996-1999 California State University Sacramento, B.S. Psychology

1996-1997 Sierra College, Art Design and General Education

1975, 1980-1981 Allen Hancock, Art Design and General Education

1978-1979 Santa Barbara City College, Art Design and General Education



Faducci Proposal for Fair Oaks Park





Faducci Proposal for Fair Oaks Park



0.0 Mile

All is well
that ends well

Shakespeare

1.8 Mile
Loop

Attachment 1
Page 24 of 51
0.4 Mile

The wheel is come
full circle,
I am here
Shakespeare

1 Mile
Loop

0.2 Mile

Better three hours
too soon than
a minute late

Shakespeare

1.2 Mile
Loop

0.6 Mile

Wisely and slow;
they stumble
that run fast

Shakespeare

.8 Mile
Loop

0.8 Mile

Now bid me run
and I will strive
with things possible
Shakespeare

.6 Mile
Loop

P.O. Box 70331
Point Richmond, CA 94807-0331
#5 - 18th Street
Richmond, CA 94801

510-235-8700
Fax 510-234-4828
www.archieheld.com

Education

Undergraduate - UCLA - Painting, Sculpture and Graphic Arts 1975-1979
Graduate - UCLA - Sculpture 1979-1980
Jim Marcelius Memorial Scholarship Award for Sculpture 1980

Selected Public and Corporate Collections

Agora at South Main, Walnut Creek, CA
Alliant Energy Corporate Campus, Madison, WI
Auberge du Soleil Resort, Rutherford, CA
Avalon Towers, San Francisco, CA
Bellagio Hotel and Casino, Las Vegas, NV
Beringer Vineyards, Napa, CA
Beth Israel Hospital, Newark, NJ
Bishop Ranch Business Park, San Ramon, CA
Brittania East Grand, South San Francisco, CA
Brittania Oyster Point, South San Francisco, CA
Caesars Palace, Atlantic City, NJ
California Pacific Medical Center, San Francisco, CA
Charles Krug Winery, St Helena, CA
Chevron Corporation Headquarters, San Ramon, CA
City of Brea, Brea, CA
City of Chickasha, Chickasha, OK
City of Los Angeles, Department of Water & Power, Los Angeles, CA
City of Stockton, Stockton, CA
Community Hospital of the Monterey Peninsula, Monterey, CA
Cupertino Financial Center, Cupertino, CA
Dewey Land Company Corporate Headquarters, Redwood City, CA
Di Rosa Preserve: Art & Nature, Napa, CA
First Republic Bank, New York, NY
Florida International University, Miami, FL
Four Seasons Hotel, Hong Kong
Gateway Medical Center, Dublin, CA
Genentech, South San Francisco, CA
H.R. Christiansen & Sons Corporate Offices, Sunnyvale CA
Harrah's Resort Casino, NV
Health Net Corporation, Los Angeles, CA
Hilton Hotel, Tuscon, AZ
Hilton Hotel, San Jose, CA
Howard Hughes Corporation, Las Vegas, NV
Hyatt Regency, Scottsdale, AZ
Jewish Community Center, Palo Alto, CA
Kips Bay Court, New York, NY
Los Alamos Fire Station, Los Alamos, NM
Louis Vuitton Moet Hennessey, San Francisco, CA

A.Space Gallery, Menlo Park, CA
Aerena Galleries, Healdsburg & Yountville, CA
ARTERRA, Bellevue, WA
Carriage House, Dania Beach, FL
Hanson Gallery Fine Art, Sausalito, CA

InArt Gallery, Santa Fe, NM
Jackson Grant Gallery, Ross, CA
Serenity Garden Gallery, Duncans Mills, CA
Terris Draheim, Seattle, WA

Fair Oaks Park - Castle Structure - View 1



Fair Oaks Park - Castle Structure - View 2



Fair Oaks Park - Castle Structure - View 3



427. Harvey way
Pacifica, Ca. 94044
415-7304 4204
Email corkmarch@earthlink.net

EDUCATION

1968-1970 MFA Sculpture, California College of Arts and Crafts, Oakland, CA
1965-1967 California State College, Hayward, CA
1963-1965 College of San Mateo, San Mateo, CA

SELECTED COMMISSIONS.

2019 Private Commission, SF. Ca.
2017 The orchards. Walnut Creek.
2017 Phaeno Museum, Wolfsburg, Germany
2016 Water Front market entrance Boston
2014 The 4th street project - Cleveland.
2011 Robert Swanson Memorial. MIT, M
2009 Revolution Rec, Charlotte NC
2009 Art Tatum Memorial, Toledo, Ohio
2008 Healing Garden. Reno. Nv
2007 Reno Events Center Ballroom, Nevada
2007 Enoch Pratt Library, Baltimore, Maryland
2007 Heldrich Hotel, New jersey.
2007 Studio One, Oakland, Ca.
2006 BART -16th and Misison station. SF, Ca.
2005 Reno Events center. Hanging atrium sculpture
2004 Cleaveland Icons. Ohio.
2004 Great Eagle Ceneter, HongKong, Chia
.2003 Hoquiam, Washington. Beacon and Boat
2003 New Jersey Transit. Cattail
2003 San Jose City Hall Complex
2002 Dallas Canopy, Dallas Texas
2002 New Jersey Transit. Seacaucuss N.J.
2001 San Jose Reperatory Theater
2001 Magna Museum , England
1999 Singapore Millenia walk
1998 Columbus, Indiana. Museum of living Architecture
1998 Milwaukee River Walk. Wisconsin
1996 Wiltern Theater, Los Angeles, CA
1996 Canal City, Fukuoka, Japa1995 Expo Center, Madison, WI
1995 School of Osteopathic Medicine, Philadelphia, PA
1994 University of Iowa, IO
1994 Rowen College, NJ
1994 Ft. Lauderdale Airport, Ft. Lauderdale, FL
1993 Ulrich Museum, Wichita, KS
1993 Hang Lung Corp., Hong Kong
1993 Homart, Atlanta, GA
1992 Central Michigan University, Midland, MI
1991 Principal Financial Group, Des Moines, IO
1991 The Good Guys Corp., San Mateo, CA
1990 Olympic Ice Hockey Facility, St. Cloud, MN
1989 Art Tower, Davis, CA
1988 Jamaica Development Corporation, Queens, NY
1986-87 Iowa Historical Building, Des Moines, IO
1985 Actor's Theater Marquee, St. Paul, MN
1984 Orenstein Residence, Minnetonka, MN
1984 Dayton Hudson Collection, Minneapolis, MN
1982 Minnesota Mutual Life Insurance Co., St. Paul, MN
1983 Regis Corporation, Minneapolis, MN
1981 First Bank of Minneapolis Skyway Project, MN
1980 City Light, Permanent Installation for City of Seattle, WA
1976 Walker Art Center, Minneapolis, MN
1971 Opening for the Walker Art Center, Minneapolis, MN

SELECTED SOLO EXHIBITION

2011 Braunstien Quay Gallery. SF Ca.
2007 Braunstein Quy Gallery. SF, Ca.

	Braunstein Quay, SF Ca
	Braunstien Quay, San Francisco, Ca
2002	Museum of Neon Art, Los Angeles
2000	Braunstein Quay Gallery, SF. Ca.
1999	Gray/ McGear Gallery , Los Angeles, Ca.
1996-95	Braunstein/ Quay Gallery, San Francisco, C
1994	CCAC, Oakland, CA
1993	Morgan Gallery, Kansas City, MO
1992	Braunstein/ Quay Gallery, San Francisco, CA
1991	Museum Glaskasten, Cologne Germany
1989	Schmidt Dean Gallery, Philadelphia, PA
1988	Nerlino McGear, NYC
1986	New Langton Arts, San Francisco, CA
1984	Toledo Museum of Art, Toledo, OH
1984	Manheim Kunst Museum, Manheim, West Germany
1983	Gallery Aiedes, West Berlin, West Germany
1983	University of California, Irvine Museum, CA
1982-83, 71	Minneapolis Institute of Art (Traveling Exhibition), MN
1975-82	Morgan Art Gallery, Kansas City, MO
1981	Modernism Art Gallery, San Francisco, CA
1981	Dobrick Gallery, Chicago, IL
1973, 75, 77, 80	Louis K. Meisel Gallery, NYC
1980	Rutgers University Art Gallery, New Brunswick, NJ
1979	The Fort Worth Museum, Fort Worth, TX
1974, 78	Galerie M, Bochum, West Germany
1978	Van Abbemuseum, Eindhoven, Netherlands
1978	Nationalgalerie, Berlin, West Germany
1978	Berliner Kunstlerprogramm des DAAD, Berlin, West Germany
1977	Hanson-Cowles Gallery, Minneapolis, MN
1976	Kunsthalle Dusseldorf, West Germany
1975	Folkwang Museum, Essen, West Germany
1972-74	118 An Art Gallery, Minneapolis, MN

AWARDS

1983	NEA - National Endowment for the Arts, (Sculpture), \$25,000
1982	McKnight Foundation Grant, \$15,000
1978	DAAD - Berlin Artists Program, \$50,000
1977	Bush Foundation Fellowship, \$12,000

COLLATERAL ACTIVITIES

Designed sets for Samuel Beckett – End Game, Craps Last Tape, Game. Schiller Theater Berlin.

Design Sets for Robert Wilson – Death destruction Detroit. Shaubuhne Theater, Berlin.

Strindberg's – Too Damascus. Hamburg State Theater.







Davis Art Center, Davis CA 1991, Juried Competition
Galleria Mesa, Mesa AZ 1990, Juried competition

Gallery Representation

Sculpturesite Gallery
www.sculpturesite.com

Dennis Rae Fine Art, San Francisco, CA
www.dennisraefineart.com

Dennis Rae Fine Arts, St. Helena, CA
www.dennisraefineart.com

Gallery of Modern Masters, Sedona, AZ
www.galleryofmodernmasters.com

Red Door gallery, Lagos, Nigeria
www.reddoorgallery.com



*Proposed Sculpture for
Sunnyvale Fair Oaks Park
James Moore 2019*



Figure I
James Moore



Figure 2
James Moore



Figure 3
James Moore

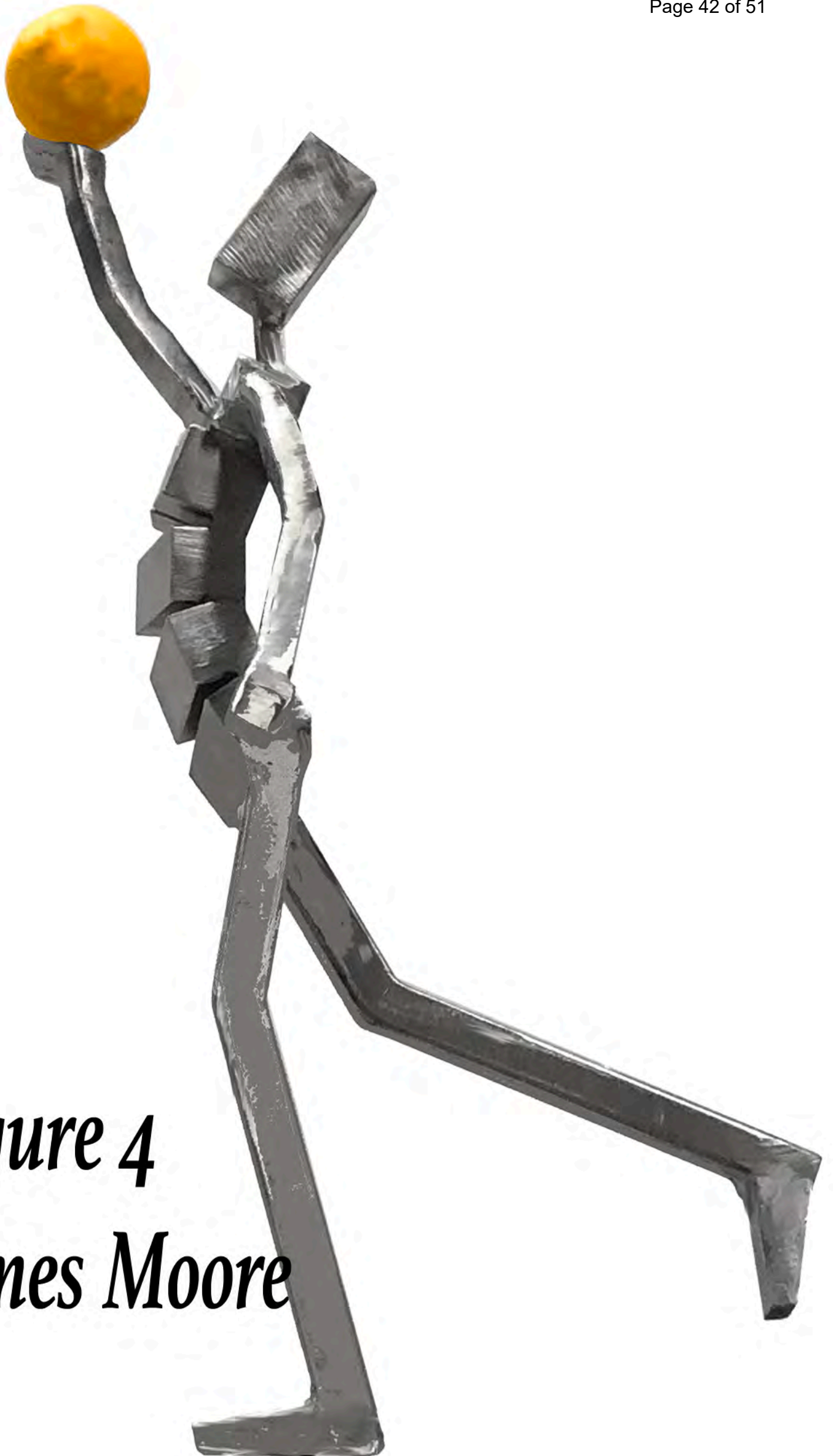


Figure 4
James Moore

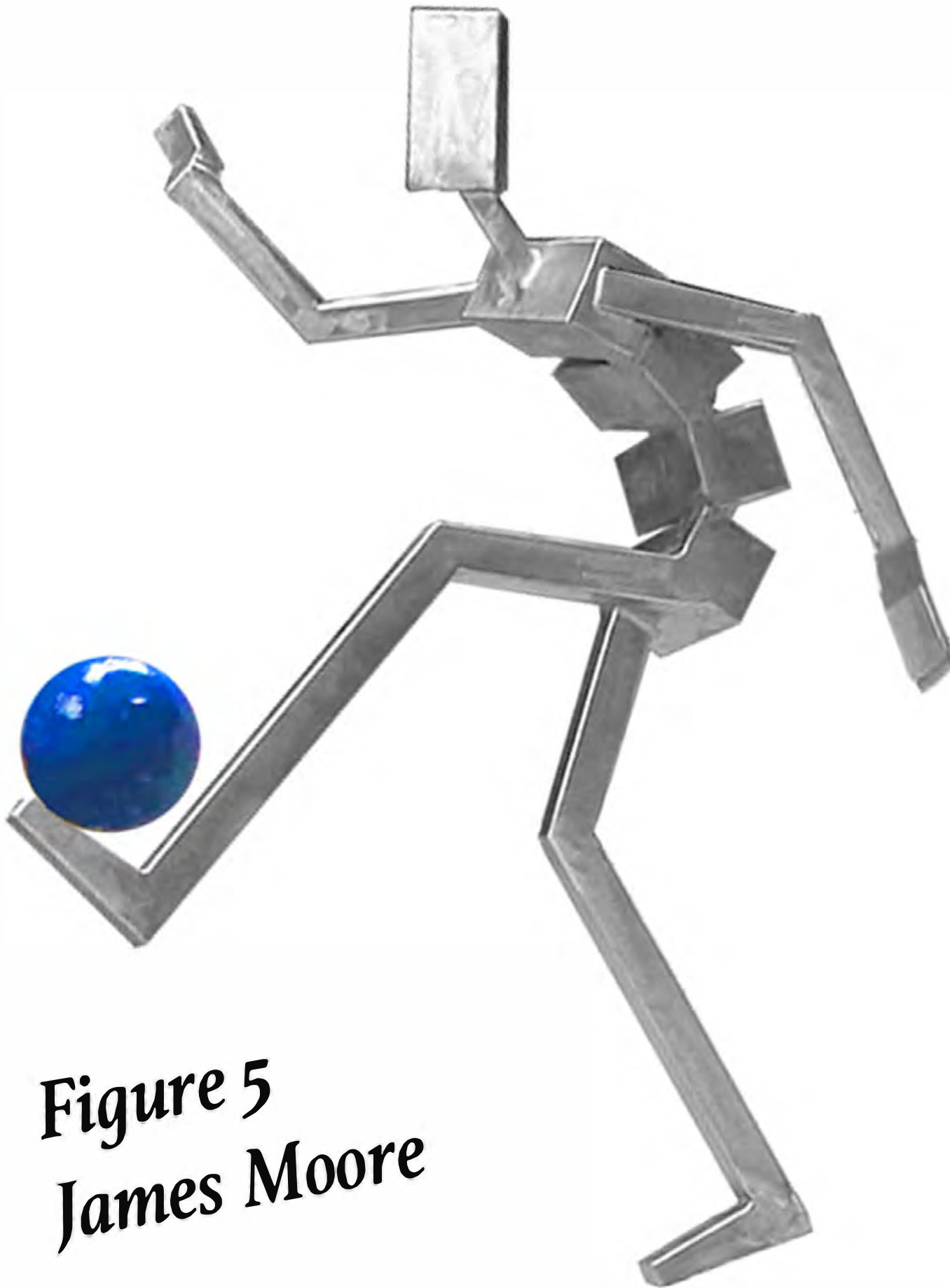


Figure 5
James Moore

VICKIE JO SOWELL

3618 Peralta Street, Emeryville, CA 94608 (510) 655-7374
vickiejosowell@hotmail.com www.unrulyimages.com

AWARDS/COMMISSIONS:

2019 **Las Animas**, Free-standing sculpture for Cambridge Place community,
Gilroy, CA (In progress)
Core-10 Steel, powder-baked enamels

Artwork commemorates the location of Gilroy's legacy schools

Contract Value: \$43,500

2018 **World in a Grain of Sand**, Silicon Valley Monument, 391 San Antonio
Rd, Mountain View, CA Collaboration with Mary B. White
Powder-baked enamel on steel, stacked, fused glass

The three tall sculptures that stride above this sidewalk location commemorate the
pioneering work of the Shockley Semiconductor Laboratory at 391 San Antonio Road
in the 1950s.

From this location and using the concepts embodied in these solid-state
components, the companies and technologies that make up the Silicon Valley were
born.

Contract Value: \$170,000

2017 **Curriculum**, Panels for Hilltop High School, Richmond, CA
Powder-baked enamel on steel

Fence panels celebrate the educational curriculum at Richmond's new High
School

Contract Value: \$30,000

2016 **Always On**, Fire Station #9, Livermore, CA
Powder-baked enamel on steel

Commission for the City of Livermore's Fire Station No. 9. This wall-mounted
frieze extends for 44 feet along the front of the facility.

Contract Value: \$30,000

2014 **Orange is the Happiest Color**, Ecole Bilingue, Emeryville, CA
Powder-baked enamel on steel

Signature sculpture for new bilingual school campus. Extensive interaction with school staff and students to create panel designs that present images and words in three languages

Contract Value: \$27,600

2011 **Marina Gates**, Marinas Int'l, Emeryville, CA
Powder-baked enamel on steel

Entrance artworks for the Marina and Sportsfishing docks. Reconditioning of existing structure, additional artworks, new panels.

Contract Value: \$21,500

2011 **The Rippling**, McKinley Arts and Culture Center, Reno NV
Powder-baked enamel on steel

Sign supports for informational signs at Reno's Arts Center that featured local endangered species

Contract Value: \$15,000

2010 **Niles Panorama**, Fire Station No. 2, Fremont, CA
Powder-baked enamel on steel

15 inset panels for new Fire Station in historic Niles district

Contract Value: \$27,500

2009 **Gates4Yates**, Anna Yates Elementary School, Emeryville, CA
Enamel painted steel

Entryways and decorative fencing for Elementary school renovation

Contract Value: \$25,000

2008 **Life is a Ball**, King Park, Brentwood, CA
Welded Bronze

Commission for City of Brentwood, CA's King Park. Figures of five bronze dogs are rendered in the act of leaping for a thrown ball. The standalone figure of "King," Brentwood's first licensed canine, sits nearby.

Contract Value: \$44,000

2008 **Roots of Oakland**, Highland Hospital, Oakland, CA
10 tile mosaic panels with hand-crafted text and floral elements

I was commissioned to provide 10 ceramic tile mosaic panels for the terraced main entryway to Alameda County's Highland Hospital.

Contract Value: \$13,000

2007 **Sprazzo di Sole**, Orinda, CA
Enamel on Steel

Commission installed at Private Residence, Orinda CA.

Contract Value: \$10,000

2007 **Sweidy-Stata Poolhouse**, Atherton, CA
Powder-baked enamel, zinc-dipped steel

Private Commission, Sweidy-Stata Home, Atherton, CA. I was commissioned to provide a full suite of artworks for the poolhouse location, including three gates, two railings, a large window treatment, and over 50 feet of ornamental fence.

Contract Value: \$37,000

2005, 2007 **Richmond Works**, Richmond, CA
166 waterjet cut steel panels, powder-baked color coatings

Public Art Commission for the City of Richmond's Transit Village. The commission consists of approximately 600 feet of fence in three sections along Marina Way, bordering the Transit Village. Panels depict 7 original thematic designs relating to the people and times of Richmond. Follow-on for Traffic Circle barrier, 2007.

Contract Value: \$150,000

2005 **Stockton Heliotrope**, Stockton, CA
Enamel on Steel 50' diam.

Commission installed at Matt Equinoa Park in Stockton, California. Three sculptural sections sits atop a hexagonal shade structure establishing a spiraling floral bouquet that tracks the sun. Floral images are of native flowers that attract beneficial insects.

Contract Value: \$20,000

2004 **Neighborhood Convergence**, Emeryville, CA
11 8' tall Enamel painted steel figures

Public Art commission, Emeryville, CA. The commission consisted of eleven enamel-painted steel figures, each approximately 8' tall, executed in collaboration with Emeryville painter M. Louise Stanley and lighting designer Jeremy Hamm. The figures are installed on both sides of the Powell Street undercrossing of Interstate 80 in Emeryville.

Contract Value: \$125,000

2004 **Fruitvale Revival**, Oakland, CA

Public Art Commission, City of Oakland. The commission was for a central arch that combined architectural icons drawn from the Fruitvale district with organic fruit and branch fabrications that sprang from Fruitvale's orchard heritage. This plaza entryway crowns four columns along the edge of International Boulevard. A follow-on commission put in place a similar single central arch around a hundred yards away.

Fruit glass enamels by Deborah Lozier

Contract Value: \$30,000 + \$12,000 f.o.

2002 **Legends of Milpitas**, Milpitas, CA

Installation for Murphy Park in Milpitas. Four pillars with capitals depicting aspects of local history.

Contract Value: \$15,000

2002 **Ironhorse Trail**, Dublin, CA
Powder-baked enamel on Steel 183" x 103" x 6"

Percent-for-Art fulfillment, IronHorse Trail Housing project in Dublin, California. The commission included this signature marquee at the entrance to the project, and a series of treeguard elements along the streets there.

Contract Value: \$22,000

2001 **Michael's Palette**, Emeryville, CA
Powder-baked enamel on Steel 13' x 10' x 8'

Commercial commission, percent-for-art fulfillment, Michaels Arts Store, Emeryville, CA

Contract Value \$17,000

2001 **Emeryville Firestation #2**
Powder-baked enamel on Steel 20' x 3' x 3", 15' x 4' x .5"

For the City's first public art project for the Emeryville Firestation #2, I served as both sculptor and designer, serving as a design/color consultant for the entire facility in addition to the metalworks I installed.

Contract Value \$25,000

2000 **PickleWorks** Gates and Signage (Percent for Art fulfillment)

EXHIBITIONS:

2008 "Artscape Orinda," 11 Public Art Sculptors
2004 "Off the Rim" Grounds for Sculpture, Hamilton, NJ
2003 "Big Little" Jewelers and Sculptors in Metal, Oakland, CA
2000 "Introductions" Sculpture Garden, Wildwood Farm, Glenellen, CA
2000 "Interpreting the Figure" Mill Valley Sculpture Garden
1998 1078 Gallery, Chico, CA (2-person show)
1998 "Body and Soul" Matrix Gallery, Sacramento, CA
1998 S.F. Museum of Modern Art, Rental Gallery, San Francisco
1997 "Marked Metal" Richmond Arts Center, Richmond, CA
1997 "Humor, Parody, + Satire", PRSG at SF Design Center
1996 National Women's Caucus for the Arts, Mills College, Oakland, CA
1996 Pacific Rim Sculptors Group at the Mother Lode, Sonora, CA
1995 SF Women Artists Gallery, San Francisco, CA
1995 Andrea Schwarz Gallery, San Francisco, CA
1994 Public Art Sculpture Exhibition, City of Santa Clara, CA
1994 Pacific Rim Sculptors Group, Syntex Gallery, Palo Alto, CA
1994 ISC Exhibition, Contract Design Center, San Francisco



**Nature's Partners
Pollinators, Plants, and You**

Eighty percent of all flowering plants require the presence of pollinators, yet the population of many pollinating species is declining. Nature's Partners piques kids' curiosity about pollinators through engaging activities, culminating in a public service project.

Download this free curriculum at www.pollinator.org/curriculum



TO BEE OR NOT TO BE Sculpture Dimensions



