



Cape Cod Village Redwood Removal Arborist Report

Prepared for:

Brandenburg, Staedler, & Moore

1122 Willow Street Suite 200

San Jose CA 9512

Prepared by:

Kim Zetterlund

ISA Certified Arborist

ISA Tree Risk Assessment Qualified

WE-11717A

6/10/2020

CORPORATE OFFICE:
2337 AMERICAN AVENUE
HAYWARD, CA 94545
OFFICE: (888) 969-8733
FAX: (510) 881-5208
WWW.ARBORWELL.COM



Cape Cod Village Mobilehome Community is located at 1050 Borregas Avenue, Sunnyvale. In the backyard of unit 41 is a large redwood (*Sequoia sempervirens*) that has become a concern to the homeowner and community management. The tree has overgrown its location and has begun to cause damage to the gas and water lines that run directly under the tree due to its extensive root system.

The tree is 20.0" diameter at breast height and approximately 70' tall. The tree is growing up against the back fence and the trunk is approximately 12' feet from the corner of the home. As the tree continues to grow the property has incurred repair costs for damage to the sewer and water lines beneath the tree. Unfortunately, there are no mitigation options that would prevent continued damage caused by the root system. The lines are directly under the tree and therefore the only option is to remove the tree. It is my recommendation that the

CORPORATE OFFICE:
2337 AMERICAN AVENUE
HAYWARD, CA 94545
OFFICE: (888) 969-8733
FAX: (510) 881-5208
WWW.ARBORWELL.COM



tree be removed and replaced with four 24" box crape myrtles
(*Lagerstroemia spp.*).

X Kim Zetterlund

Kim Zetterlund

ISA Certified Arborist

ISA Tree Risk Assessment Qualified

WE-11717A

CORPORATE OFFICE:
2337 AMERICAN AVENUE
HAYWARD, CA 94545
OFFICE: (888) 969-8733
FAX: (510) 881-5208
WWW.ARBORWELL.COM



CORPORATE OFFICE:
2337 AMERICAN AVENUE
HAYWARD, CA 94545
OFFICE: (888) 969-8733
FAX: (510) 881-5208
WWW.ARBORWELL.COM



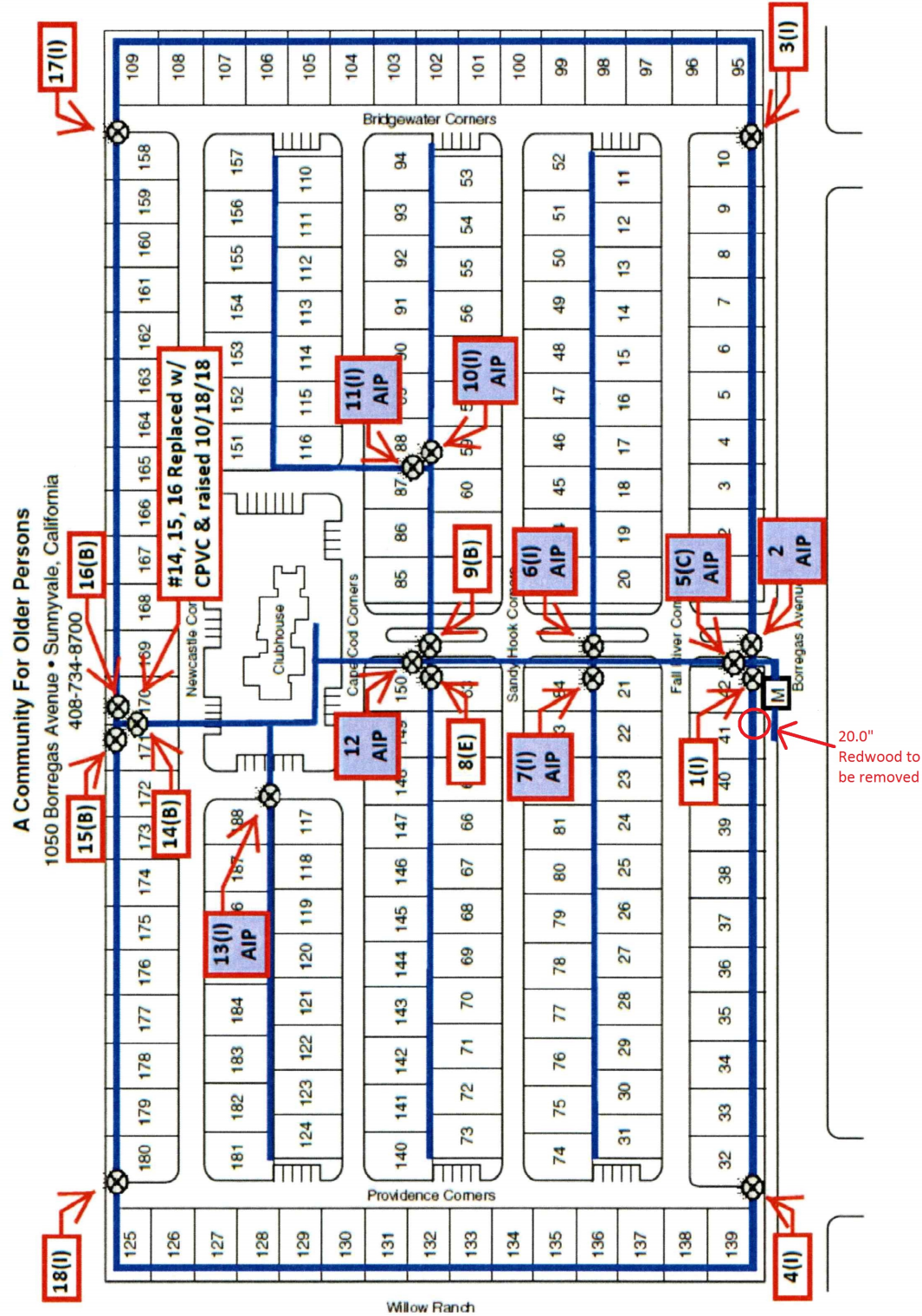
CORPORATE OFFICE:
2337 AMERICAN AVENUE
HAYWARD, CA 94545
OFFICE: (888) 969-8733
FAX: (510) 881-5208
WWW.ARBORWELL.COM

GAS MAP



CAPE COD GAS MAP

AIP - Abandoned in Place
7(E) - 7 is Valve Number
7(E) - (E) is Wrench Designation



GENERAL NOTES

- All risers to be 3/4" copper pipe.
- Pipe sizes 4" and smaller, other than service risers, shall be PVC.
- Pipe sizes larger than 4" shall be ACP with the exception of fire hydrant lateral valves shall be cast iron after gate valve.
- Transition from PVC to metal piping shall be done with the use of soldered male thread adapters or other approved transition.
- PVC pipe shall be John-Warville PVC Ring-Rite pipe 160 psi (SDR 26) or approved equal. Fittings shall be PVC Type I Schedule 40 in size 1-1/2" and smaller and Schedule 80 in size 2" and larger.
- Location of valves is approximate. Valves shall not be placed under coaches or paved areas.
- Fire hydrants to be either 6" Rich model 75 with one 4-1/2" and one 2-1/2" hose outlet and 6" riser or 4" wharf type with two 2-1/2" hose outlets and 4" riser, as shown on plan.

- Design of system based on pressure of 80 psi on development side of meter.
- Contractor to provide valve boxes with covers and mark valve locations.
- All water lines shall be installed with a minimum of 3 inches of rock-free earth or sand bedding and covering and shall have a minimum of 18 inches of cover on PVC and a minimum of 30 inches of cover on ACP. Hand shade all pipe before backfill.
- All trench backfill in street areas shall be sand, jetted and wheel rolled. All trench backfill other than in street areas shall be with native material, jetted and wheel rolled.
- Contractor shall verify location of irrigation stubs with landscape designer. Landscape contractor shall install gate valve and vacuum breaker at each stub.
- For details see Sheet 11.

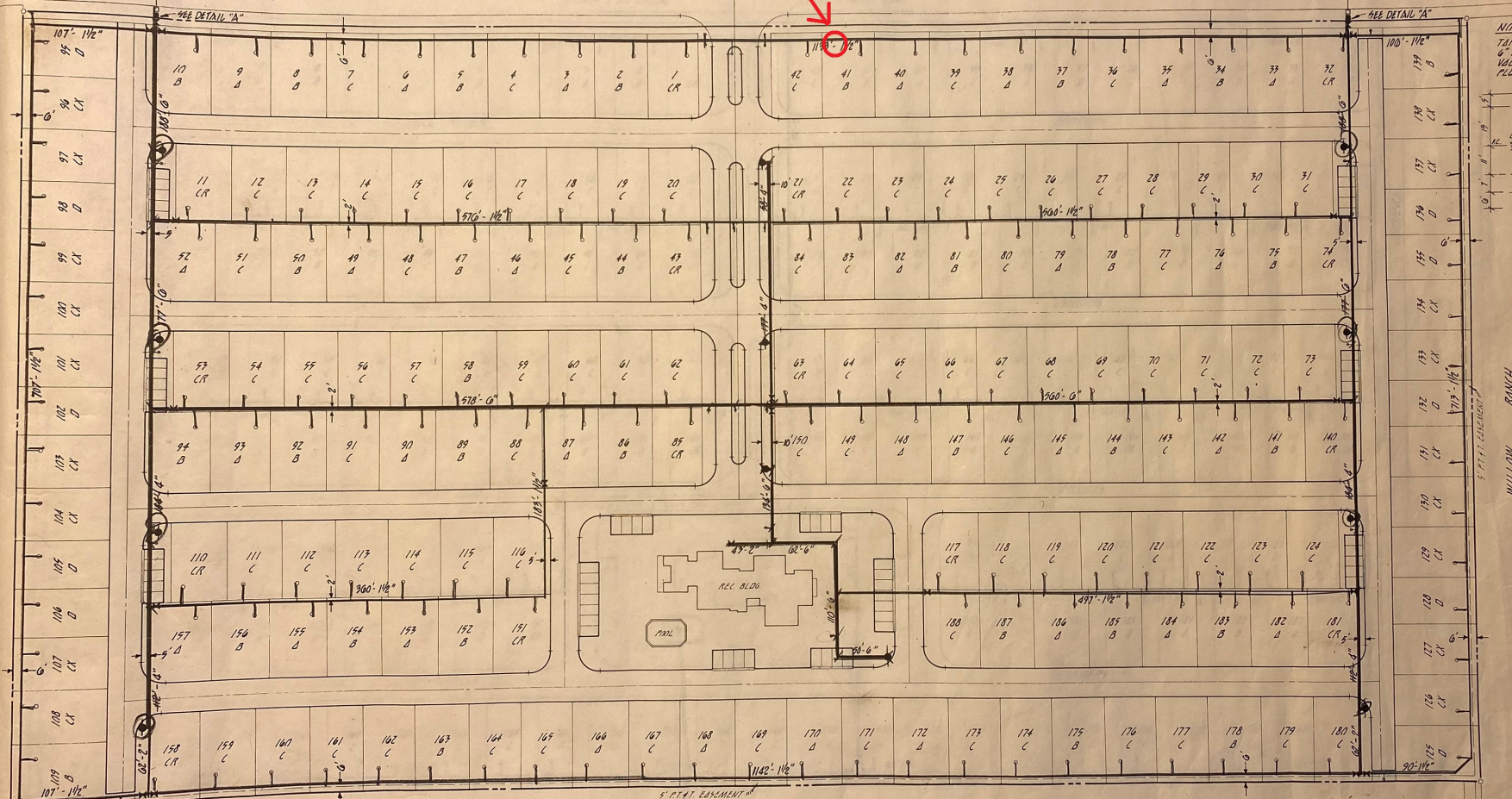
LEGEND

- 1" OR 1 1/2" FIRE MAIN
4" OR 6" FIRE MAIN
SERVICE UNDER 4"
FIRE HYDRANT, 6" RICH #75, 1/2" GATE VALVE, BOX, THROTT BLACK
FIRE HYDRANT, 4" RICH #75, 1/2" GATE VALVE, BOX, THROTT BLACK
GATE VALVE (LINE SIZE)
PIPE SIZE CHANGE (REDUCER)
1/2" GLOB OUT FOR IRRIGATION & CAP

BORREGAR

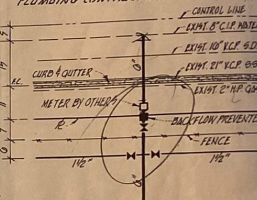
20.0" Redwood to be removed.

AVENUE



NOTE

7/8" AND 4" METER BY CITY. 6" BIDDLE, 7/8" TAPPING VALVE, 4" DOUBLE CHECK VALVE AND 6" GATE VALVE BY PLUMBING CONTRACTOR.



DETAIL "A"

SCALE: 1" = 20'

PRELIMINARY

THE ENGINEER HAS ASSUMED THE RESPONSIBILITY FOR THE DESIGN OF THE PROJECT. THE ENGINEER HAS NOT BEEN ADVISED OF ANY OTHER PROJECTS THAT MAY BE AFFECTED BY THIS PROJECT. THE ENGINEER HAS NOT BEEN ADVISED OF ANY OTHER PROJECTS THAT MAY BE AFFECTED BY THIS PROJECT. THE ENGINEER HAS NOT BEEN ADVISED OF ANY OTHER PROJECTS THAT MAY BE AFFECTED BY THIS PROJECT.

NO. DATE REVISION BY
1. 10/1/00
2. 10/1/00
3. 10/1/00
4. 10/1/00

DESIGNED BY DATE
DRAWN BY CHECKED
APPROVED



VAUGHN SHAHINIAN ASSOCIATES
CIVIL ENGINEERS • PLANNERS • SURVEYORS
1287 NO. LAWRENCE STATION RD., SUNNYVALE, CA 94086-7340

CAPE COD VILLAGE
MOBILEHOME COMMUNITY
SUNNYVALE, CALIFORNIA

WATER PLAN

