



Sunnyvale

200 W. Washington Avenue
2020-7110

Shaunn Mendrin
Planning Commission Study Session
November 9, 2020

Proposed Project

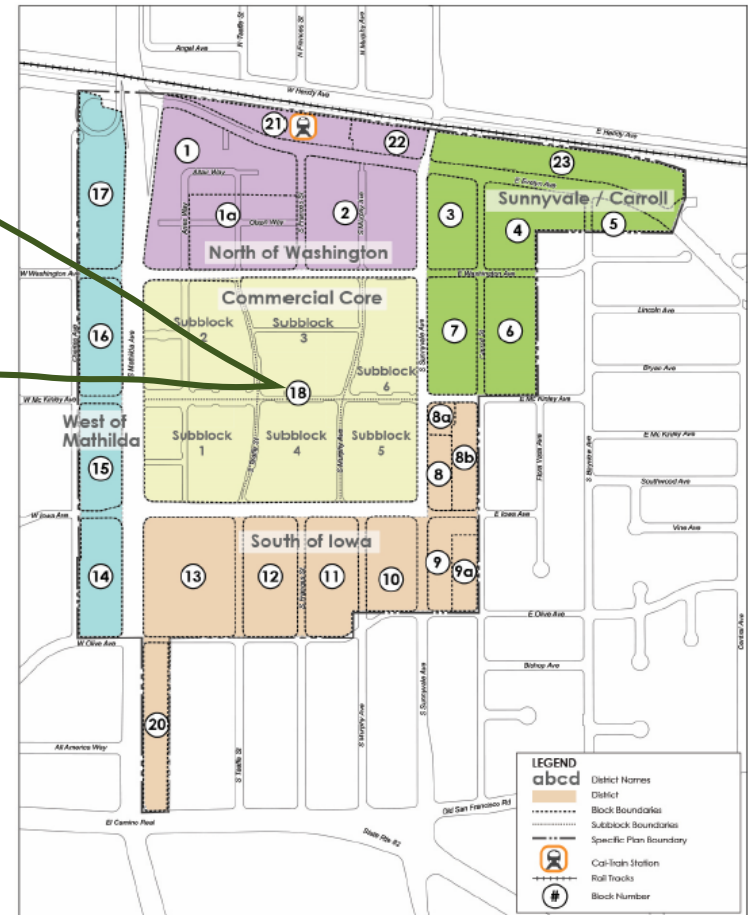
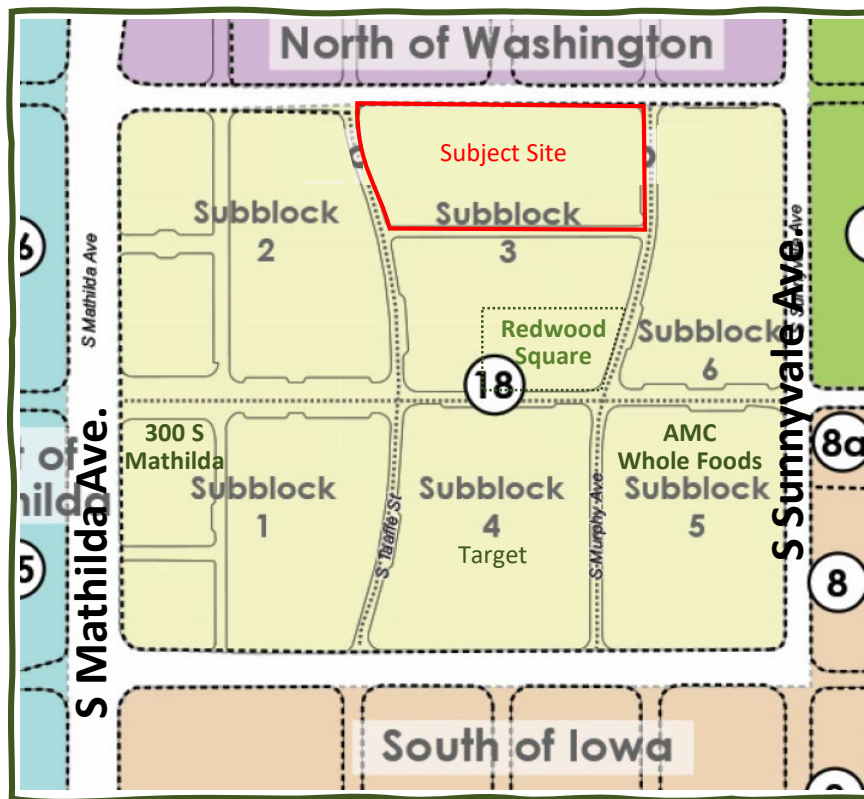
- Special Development Permit & Tentative Map
 - ◆ 7 Story Mixed Use Building (108')
 - Ground Floor Retail (52,000 sf)
 - Office (422,000 sf)
 - Underground Parking (2 levels)
 - Extension of Frances
 - Associated Site Improvements

Background

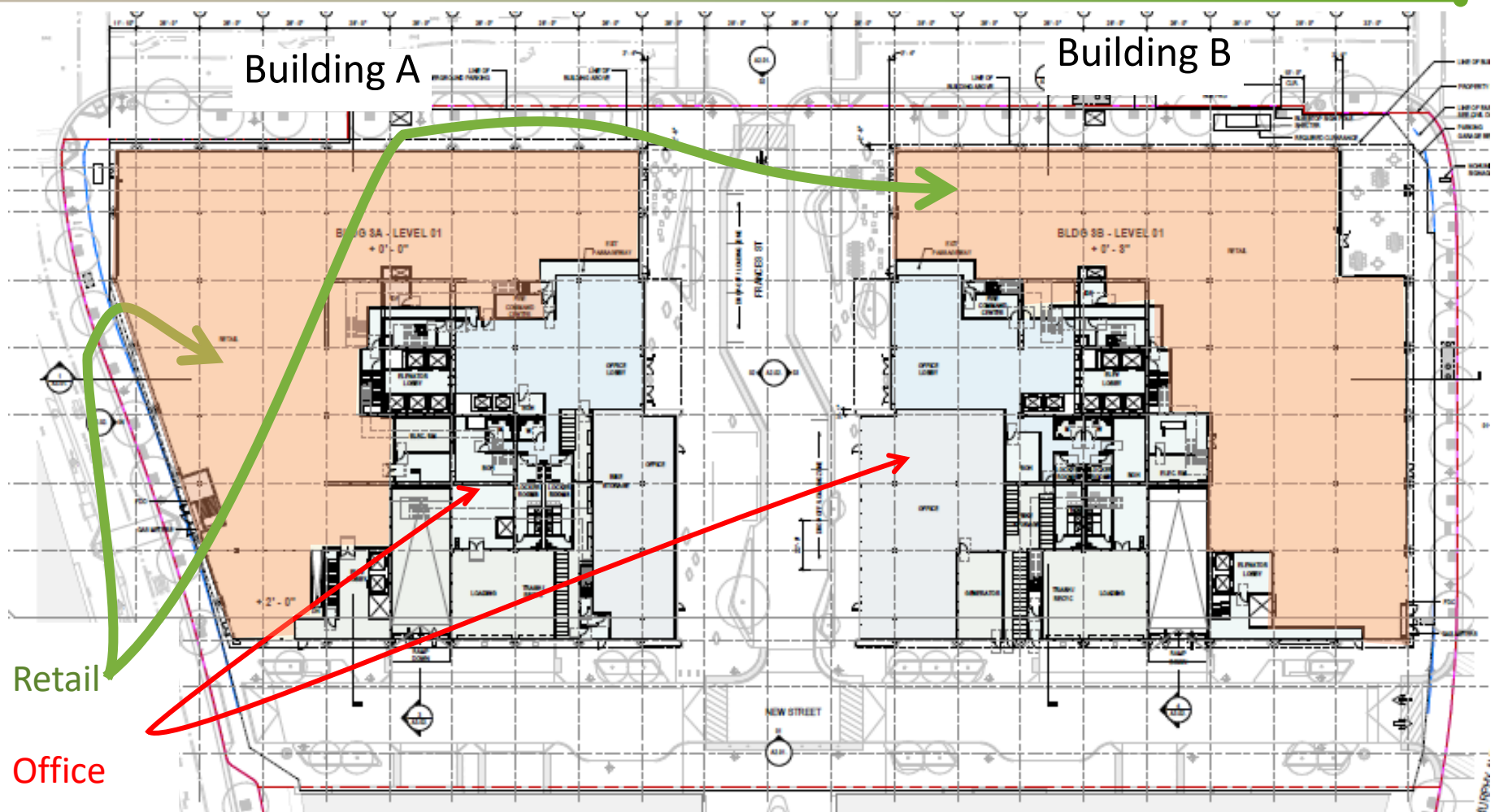
- Development Agreement
 - Guarantees 111 Height
 - Additional 265,801 square feet of Office Space
- Environmental Review
 - Completed with DSP EIR

Background

Part of Block 18 – Commercial Core



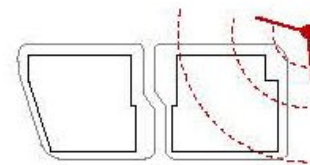
Ground Floor



Architecture-View From Murphy & Washington



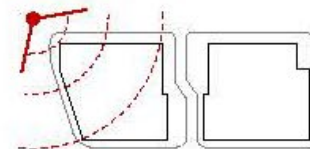
3 View from NE to SW, W Washington Street and S Murphy Ave



Architecture-View From Taaffe & Washington



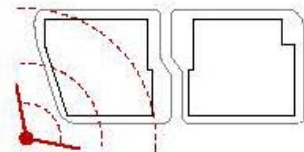
1 View from NW to SE, W Washington Ave and S Taaffe St



Architecture-View From Taaffe & New Street



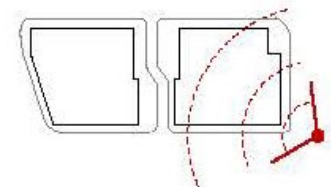
4 View from SW to NE, S Taaffe St and New Street



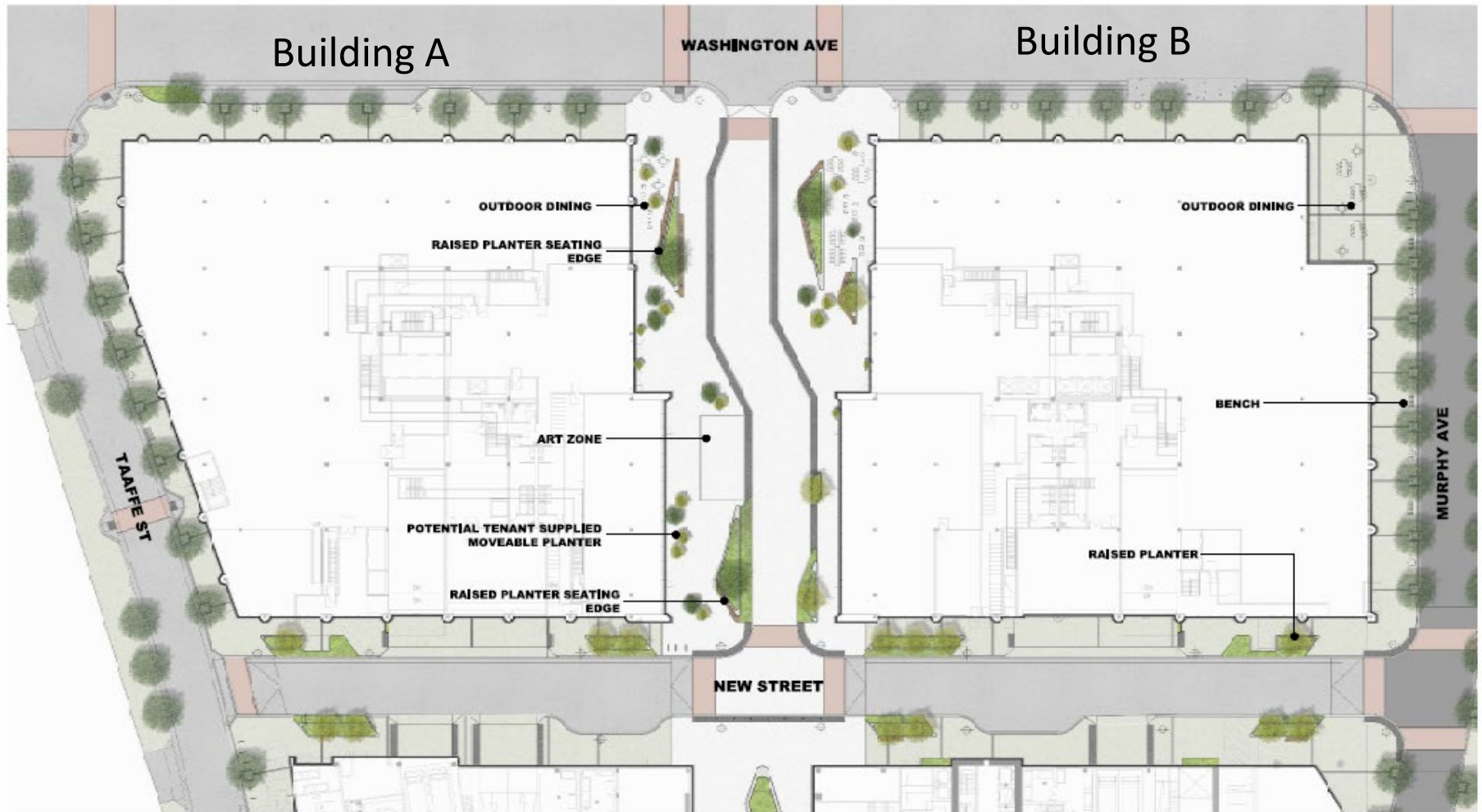
Architecture-View From Murphy & New Street



2 View from SE to NW, S Murphy Street and New Street



Landscaping/Site Improvements



Design Questions/Concerns

- Treatment of the base of the building
- Base articulation
- Treatment of Frances Avenue Extension
 - ◆ Expanse of Paving
- Pedestrian Realm on Murphy and Washington
- Relationship to Murphy Avenue

Design Questions/Concerns

- Treatment of the base of the building



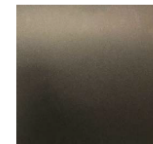
TOWER FACADE



TP 01 - TERRACOTTA
TOWER FACADE INFILL PANEL
OPTION 1



TP 01 - METAL PANEL
TOWER FACADE INFILL PANEL

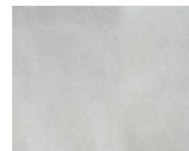


MP 01 - METAL PANEL
FORMED METAL PANEL AT
PENTHOUSE SCREEN

TOWER BASE



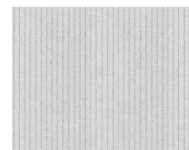
BC 01 - PRECAST CONCRETE
BASE CLADDING
OPTION 1



BC 01 - GFRC
BASE CLADDING
OPTION 2



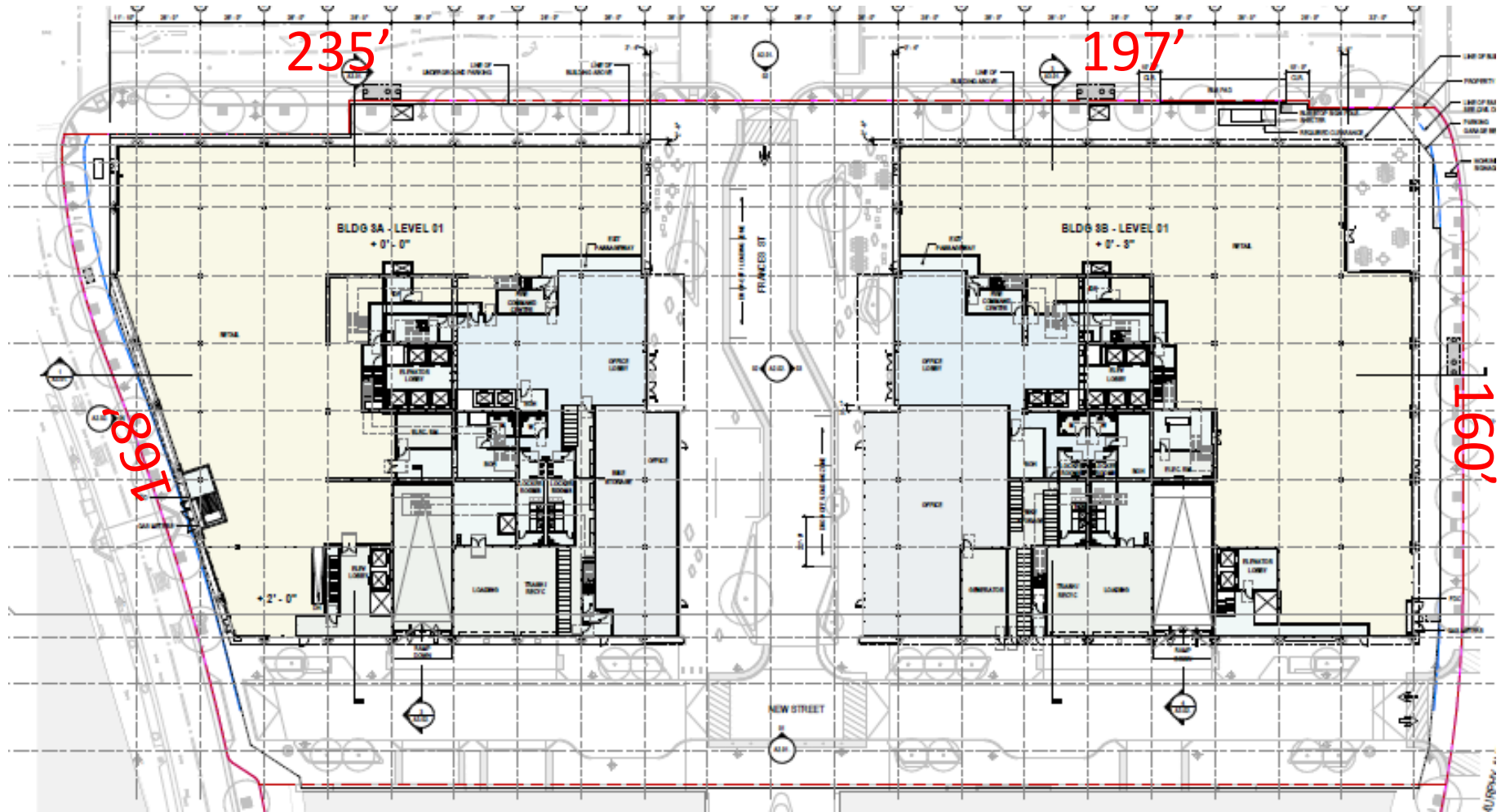
BC 02 - PRECAST CONCRETE - TEXTURED
BASE CLADDING



BC 02 - GFRC - TEXTURED
BASE CLADDING

Design Questions/Concerns

- Base articulation

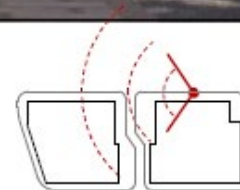


Design Questions/Concerns

- Base of the articulation



4 View down Washington Street



Design Questions/Concerns

- Treatment of Frances Avenue Extension

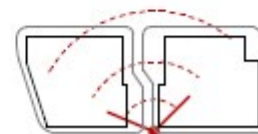


Design Questions/Concerns

- Treatment of Frances Avenue Extension



1 View from South to North on Frances Street



Design Questions/Concerns

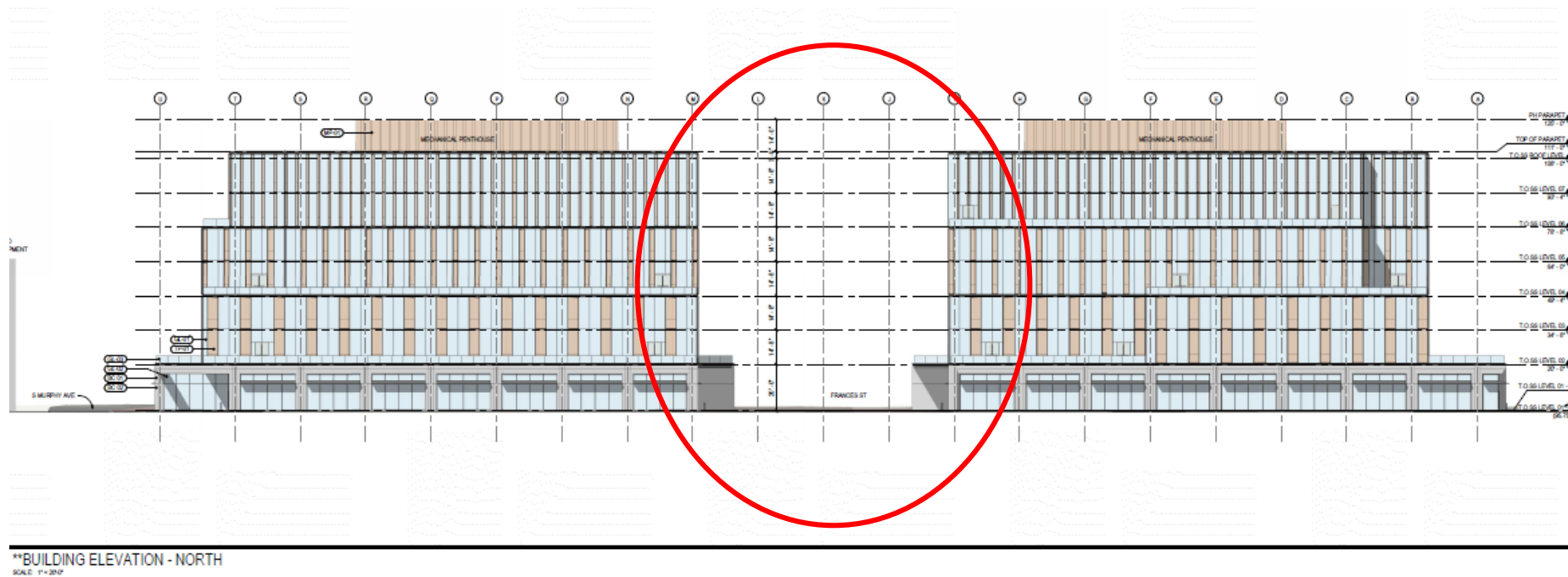
- Treatment of Frances Avenue Extension



Example of a midblock connection on a mixed-use block

Design Questions/Concerns

- Treatment of Frances Avenue Extension
 - ◆ Corner Elements

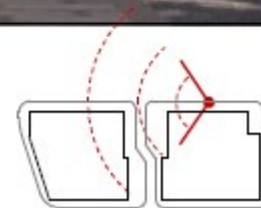


Design Questions/Concerns

- Pedestrian Realm on Murphy and Washington



4 View down Washington Street

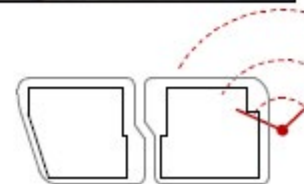


Design Questions/Concerns

- Pedestrian Realm on Murphy and Washington



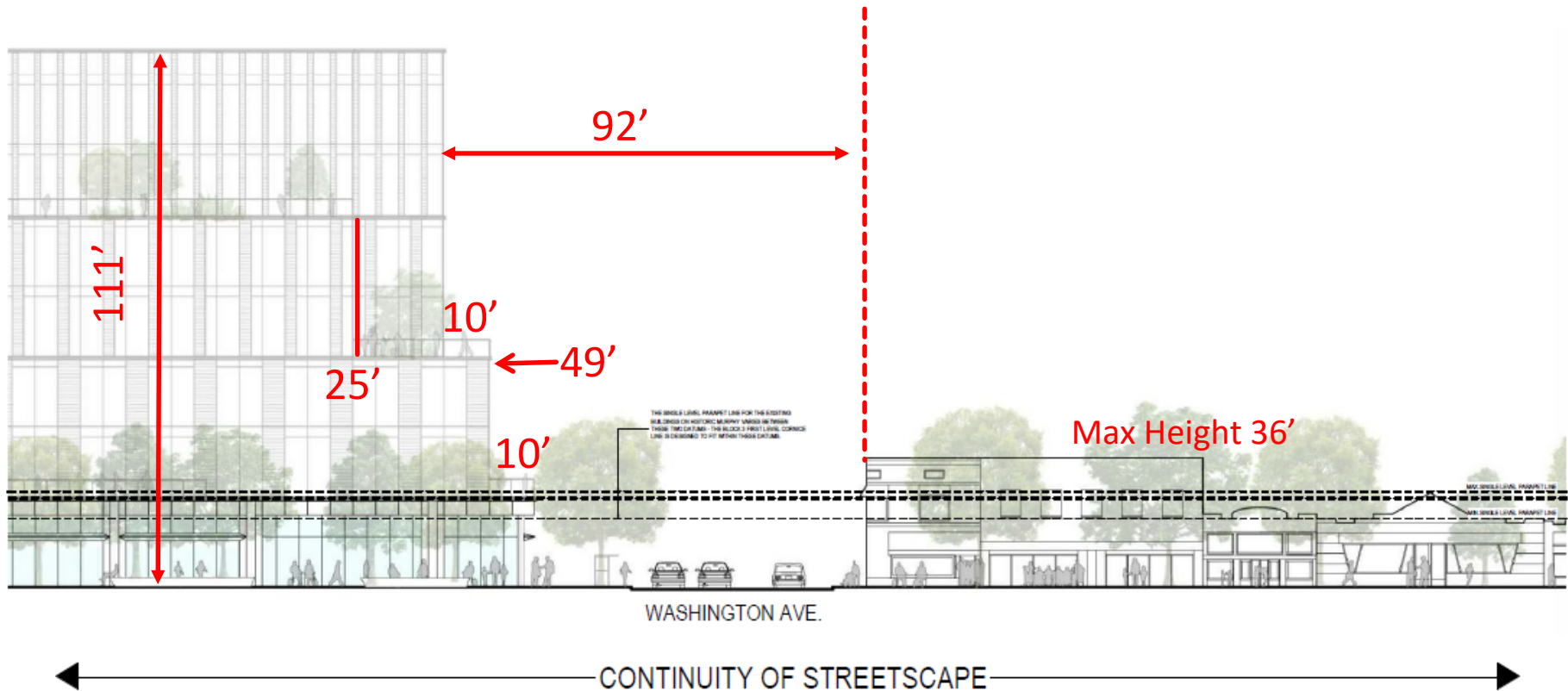
3 View from South to North on Murphy Street



Design Questions/Concerns

- Relationship to Murphy Avenue

MURPHY AVE. ELEVATION



Requested Feedback

- Base articulation
- Treatment of Frances Avenue Extension
 - ◆ Expanse of Paving
- Pedestrian Realm on Murphy and Washington
- Relationship to Murphy Avenue