

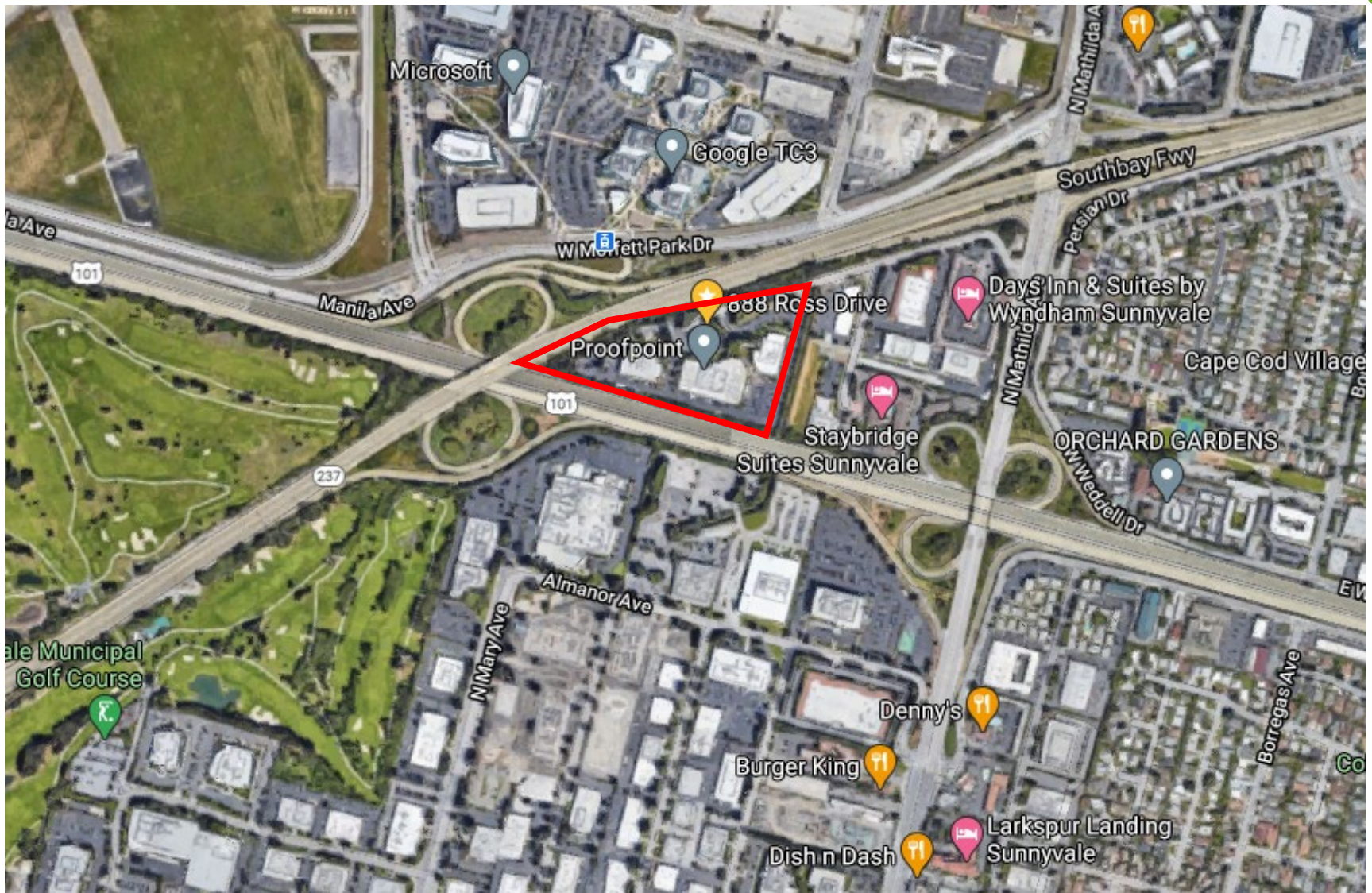


Sunnyvale

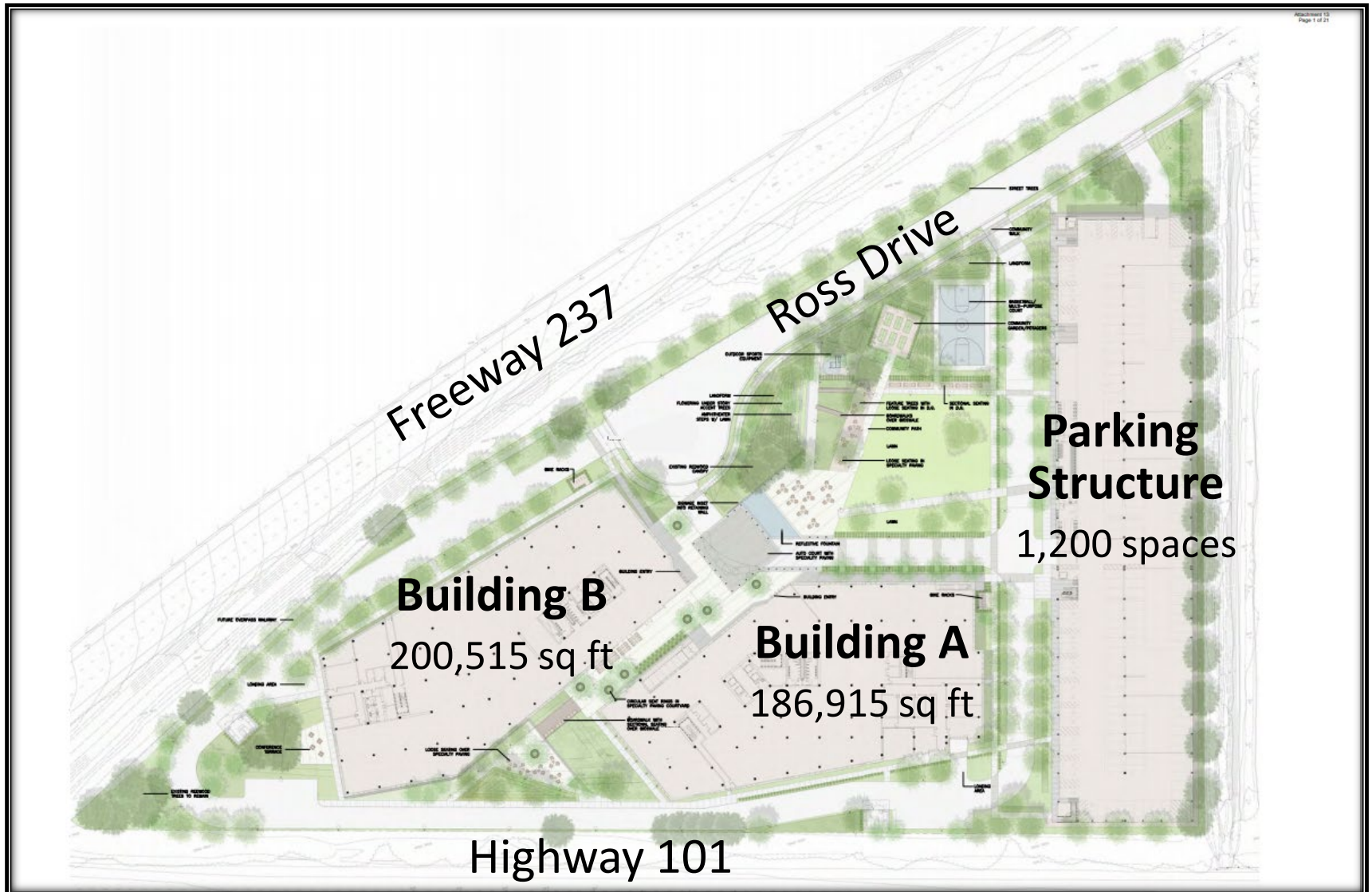
888 Ross Drive
2019-7860

Noren Caliva-Lepe, Principal Planner
City Council, November 17, 2020

Location Map



Proposed Site Plan



Project Rendering

View of Entry from Ross Drive



Project Rendering

View of Building Entries from Open Space



Project Rendering

View of Buildings from Open Space



Project Rendering

View of Parking Structure from Ross Drive



Project Rendering

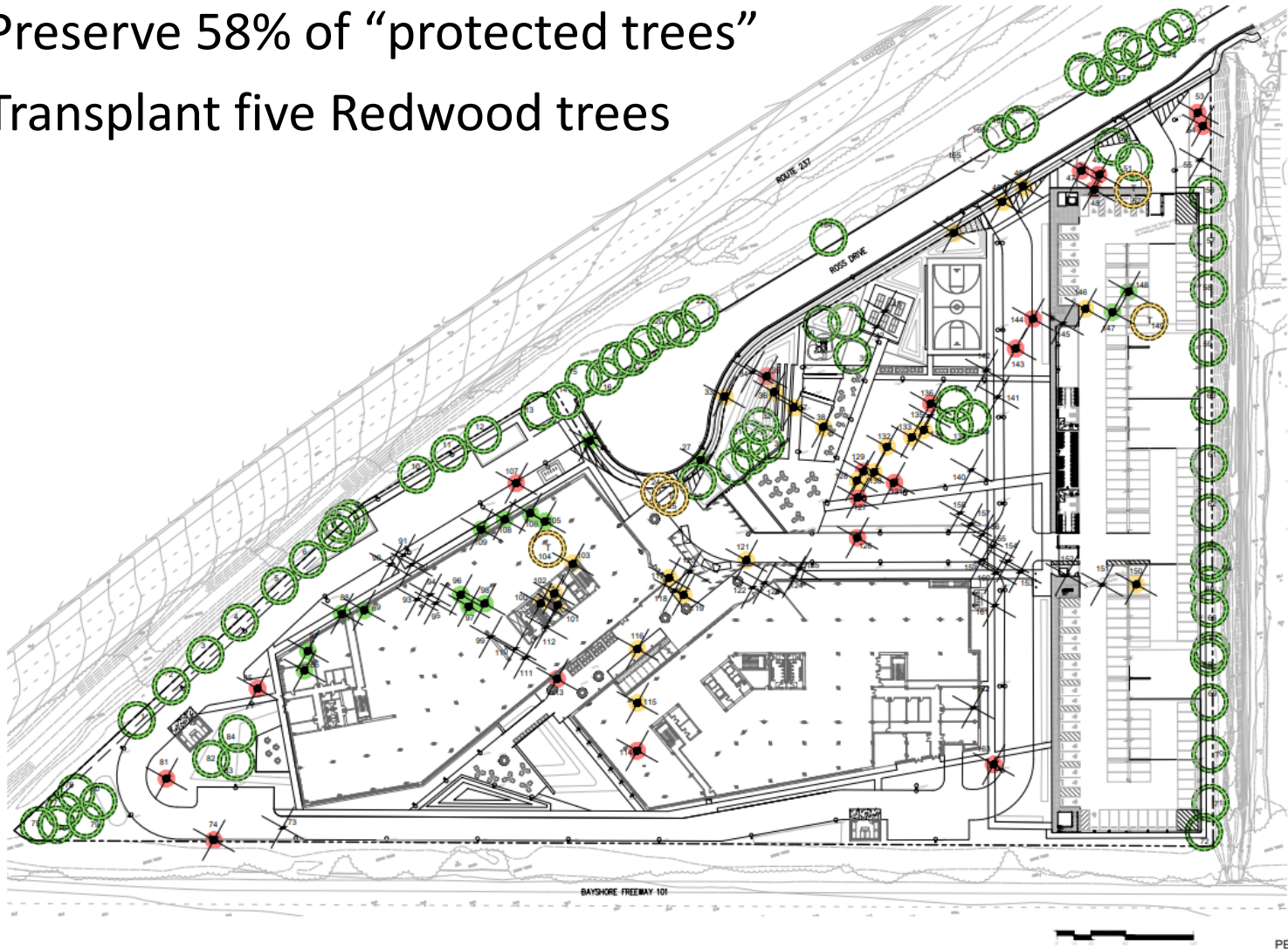
View of Parking Structure from Highway 101



Tree Disposition Plan

Preserve 58% of “protected trees”

Transplant five Redwood trees



Community Benefits

Defined Benefits:

- ❖ Over 40% of the site as open space/landscaping
- ❖ Structured parking
- ❖ LEED Gold with certification

Flexible Benefits:

- ❖ \$5,045,580 City's Community Benefits Fund
- ❖ 4,000+ sq. ft. dedication for future Mary Ave. overpass
- ❖ All-electric buildings

10/26/2020 Planning Commission Recommendation

Approved 5-1 (Simons) with minor modifications (included in revised report):

- ❖ Remove Condition of Approval PS-2 in Attachment 5
- ❖ Update parking and tree information in the CEQA Checklist in Attachment 6

Staff Recommendation

Make CEQA Findings in Attachment 6

Make Peery Park Plan Review Findings in Attachment 4

Approve the project, subject to Conditions of Approval in Attachment 5 (as amended by Planning Commission)