

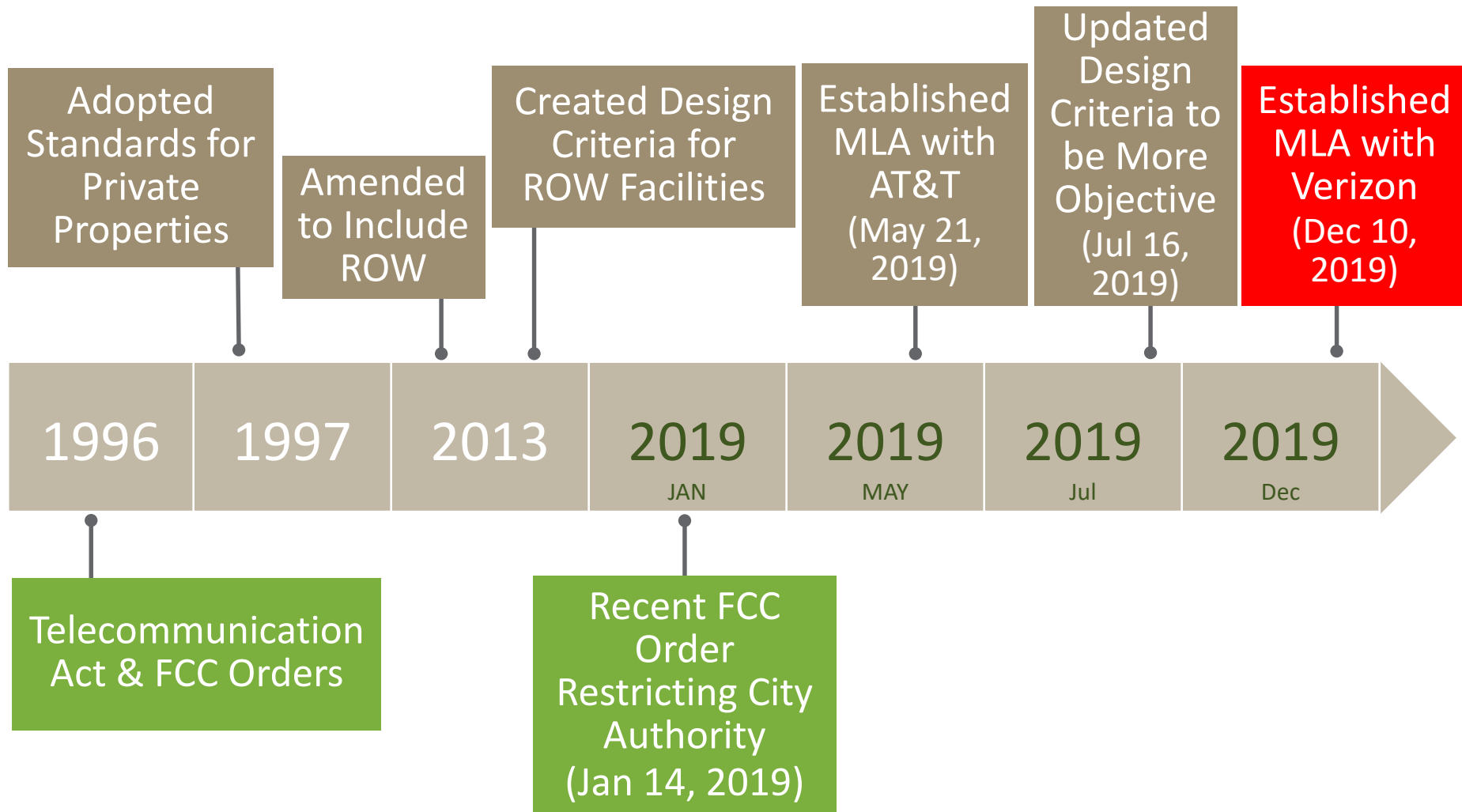


Sunnyvale

Telecommunication Ordinance Amendments

Andrew Miner, Assistant Director Of Community Development
City Council, December 1, 2020

Background



Types of ROW Applications

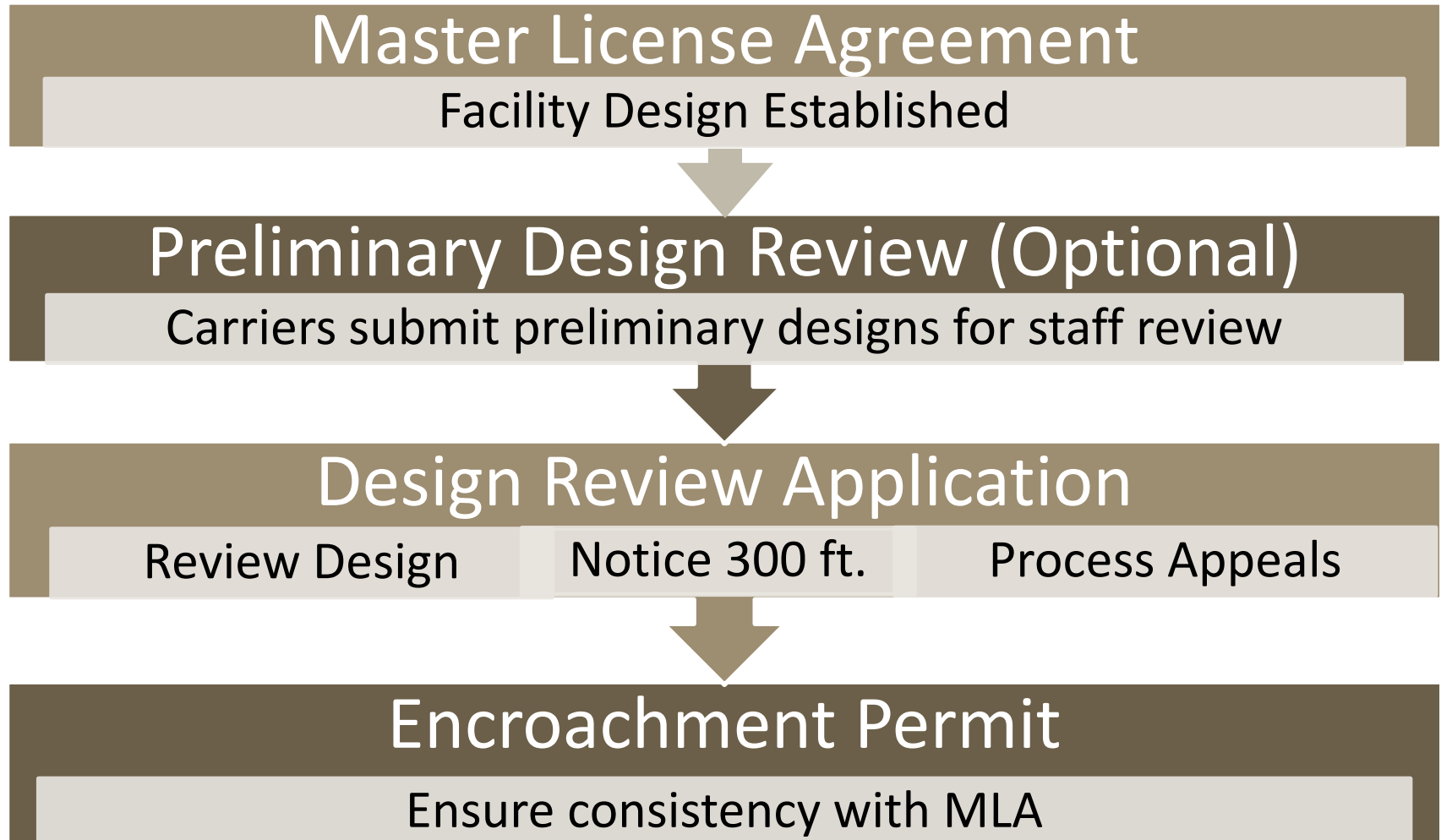
Joint Poles (Wood Poles)

- ◆ Requires noticing, pole-by-pole designs
- ◆ No process change anticipated

City Poles

- ◆ Design established with MLA
 - Incorporate Design Criteria in approved design
- ◆ MLA and design reviewed by Council
 - MLA gives carriers more options for build-out
- ◆ Responds to future technologies (5G)

Existing Process for Using City Poles



Concern with Existing Process

Redundancy of Design Review

- ◆ MLA incorporates Council-adopted design criteria

Public Outreach Efforts & Implication

- ◆ 300 ft. Notice (40-100 notices per site)
- ◆ Hundreds more 5G applications expected
- ◆ Shot clock limitations
- ◆ Public Hearings
- ◆ Appeals of City pole facility
 - Difficult to overturn approval if consistent with MLA

Proposed Process Change

City Poles w/ Approved MLA

- ◆ Eliminate Planning Division Design Review:
 - Design controlled by MLA
 - Extensive public noticing required

Non-City Poles in ROW

- ◆ No change in process
- ◆ Design criteria used in review
- ◆ Potential for appeals

Proposed Process (Approved MLA)

Master License Agreement

Design included in MLA



Preliminary Design Review (Optional)

Ensure conformance with MLA design



Encroachment Permit

Check Design Consistency with MLA Design Template

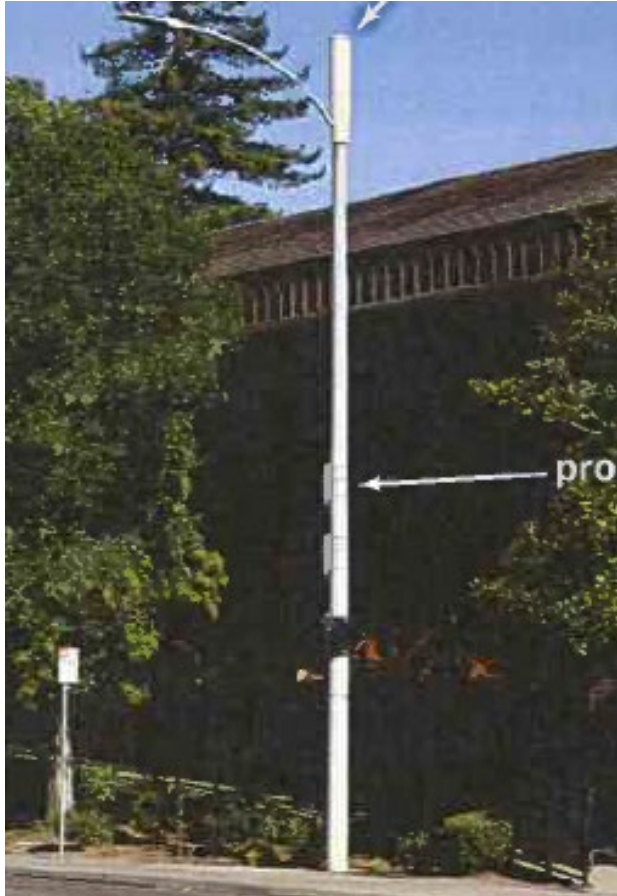
Goals of Proposed Process

Relying on MLA for Review

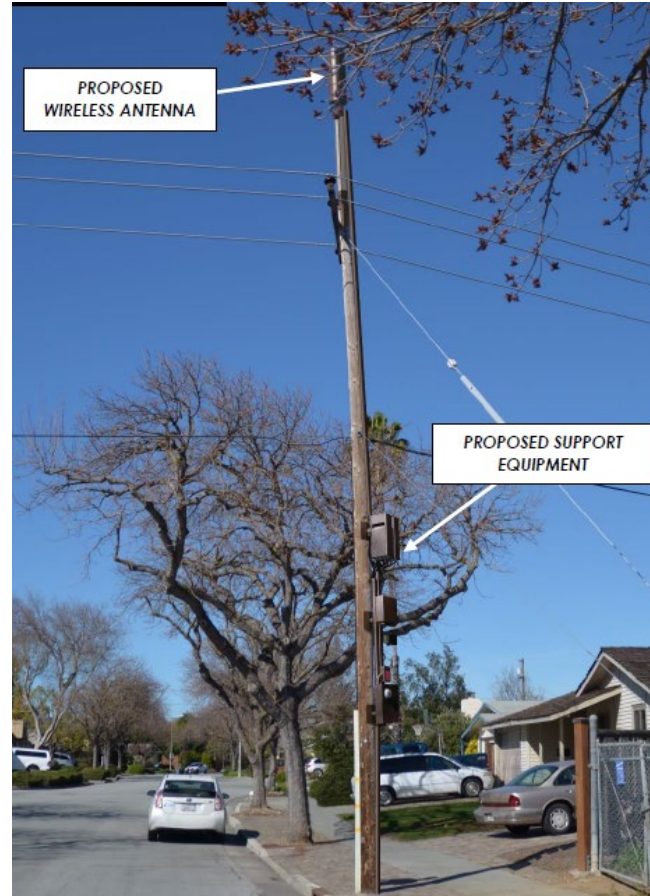
- ◆ Consistent design throughout City
- ◆ Reduce Process Time
- ◆ Efficient Use of City Resources
- ◆ Reduce Use of Wood Utility Poles

Goals of Proposed Process (cont.)

- Sleeker Design in MLA Design Template



Typical Light Pole Design



Typical Utility Pole Design

Planning Commission and Staff Recommendation

Consideration

Alternative 1

Introduce an Ordinance to amend
Sunnyvale Municipal Code Chapter 19.54.
Wireless Telecommunication Facilities

Planning Commission

Alternative 1
as described above

Staff

Alternative 1
as described above