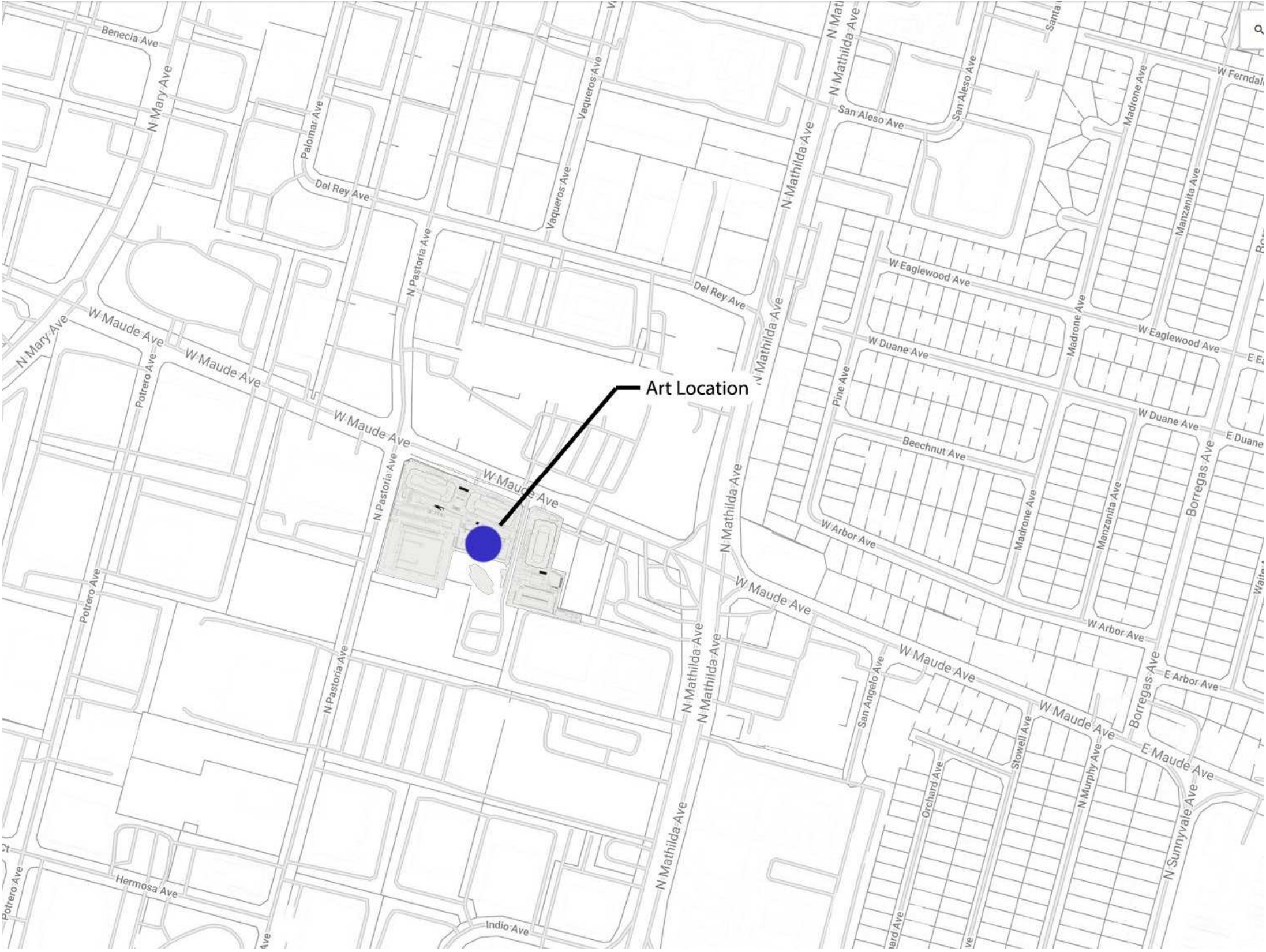


# Catalyst Artwork

Public Artwork Proposal

684/810/870 West Maude, Sunnyvale, CA  
Rob Ley Studio







Exterior Entrance on Pastoria

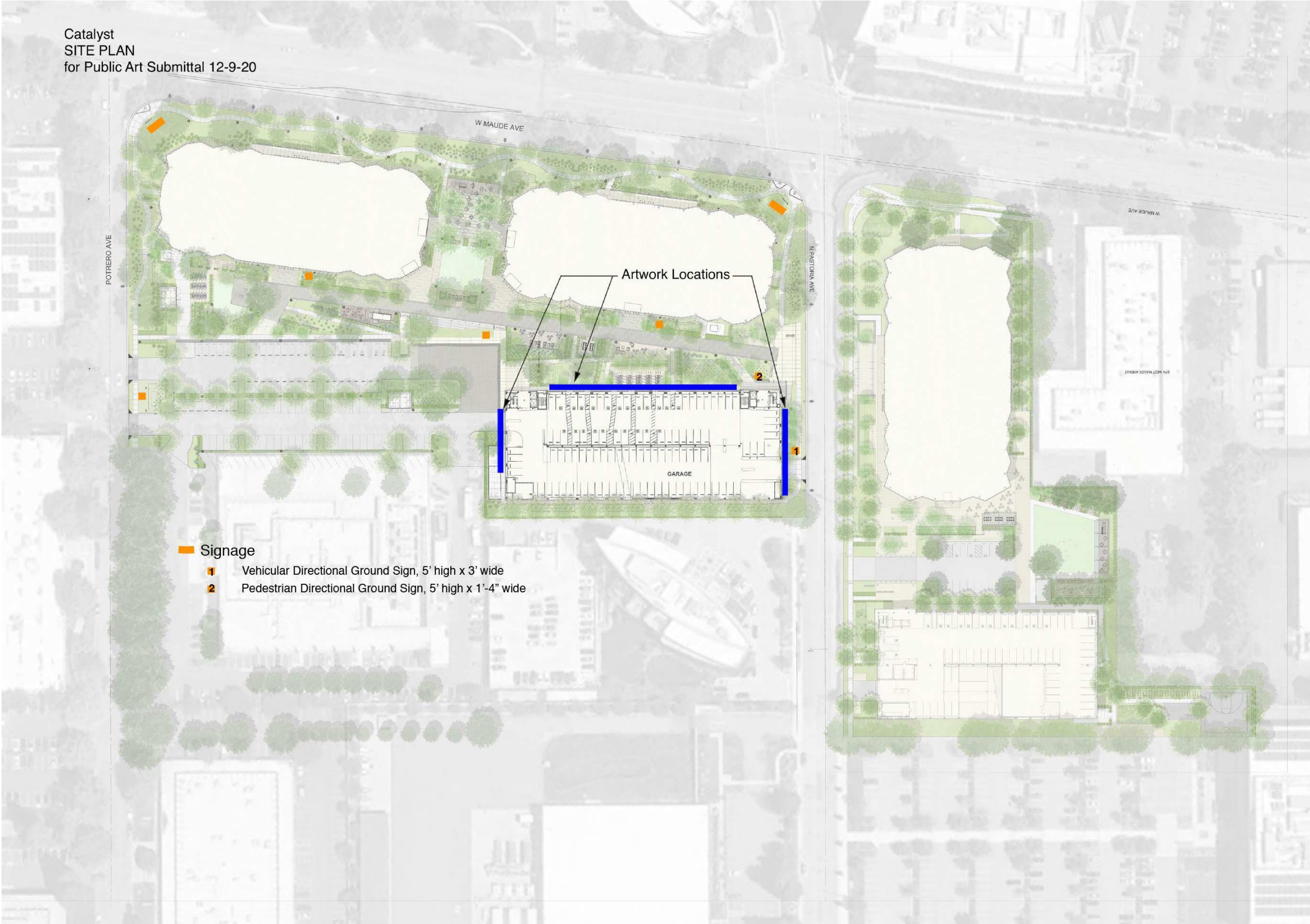




IC

Phase 2 | Entrance on Pastoria







# Rob Ley

Recent Work



Rob Ley



*May / September*

**Year:** 2014  
**Medium:** Painted Aluminum, Stainless Steel  
**Size:** 236' W x 52' H x 4' D (72 x 16 x 1.2 m)  
**Location:** Indianapolis, IN  
**Owner:** Eskenazi Hospital of Marion County

**Description:** This project began with an interest in challenging the typical notion of the parking structure as an unappreciated infrastructural typology by transforming the new Eskenazi Hospital parking structure into a binary, synthetic terrain. The effect of a field of 7,000 angled metal panels in conjunction with an articulated east/west color strategy creates a dynamic façade system that offers observers a unique visual experience depending on their vantage point and the pace at which they are moving through the site. In this way, pedestrians and slow moving vehicles within close proximity to the hospital will experience a noticeable, dappled shift in color and transparency as they move across the hospital grounds, while motorists driving along W. Michigan Street will experience a faster, gradient color shift which changes depending on their direction of travel.











Rob Ley

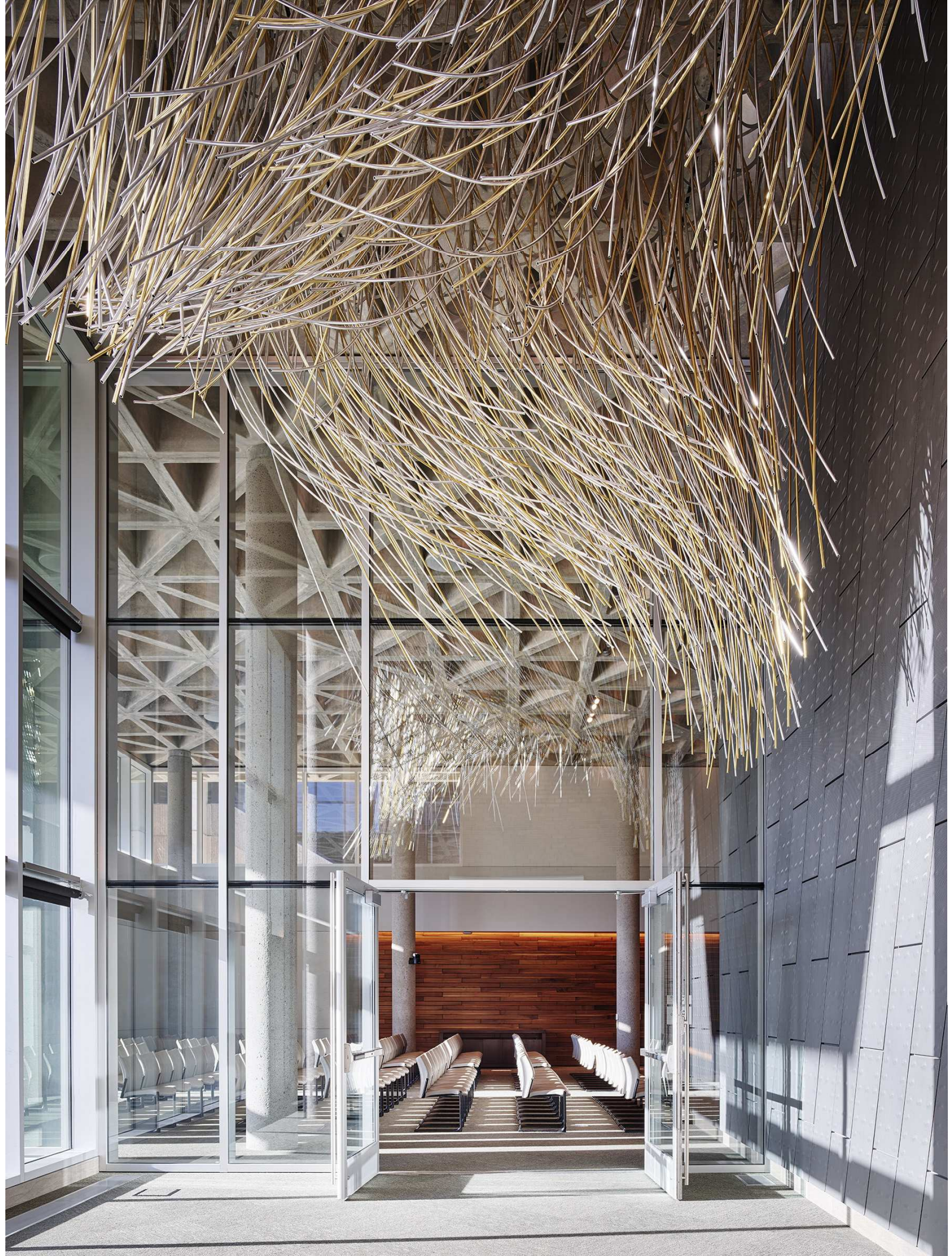


***Formidable***

**Year:** 2014  
**Medium:** Aluminum, Stainless Steel  
**Size:** 20' L x 17' W x 11.5' H (6 x 5 x 3.5 m)  
**Location:** Police Department Headquarters, Kansas City, Missouri  
**Owner:** City of Kansas City, Missouri Municipal Arts Commission

**Description:** This hanging sculpture is located in the newly renovated Police Department Headquarters building in downtown Kansas City, MO. The silver and gold finished tubes are able to exist as both autonomous elements and as multiple parts that create a singular ceiling sculpture. The piece is inspired by the contradictory duality that police officers must balance between openness and engagement with the community while still carrying a sense of strength and authority.















Rob Ley



*Ambiguous*

**Year:** 2017  
**Medium:** Powder Coated Stainless Steel  
**Size:** 7' W x 14' H x 5' D (2 x 4.2 x 1.5 m)  
**Location:** Portland, OR  
**Owner:** Oregon Zoo  
**Developer:**

**Description:** This piece takes inspiration from the similarities seen when studying various forms that mark the beginning of life. Seeds, spores, eggs and pollen exhibit fascinating tectonic and textural qualities which are unique to the species, yet ambiguous when compared to one another. The work is created from hundreds of small, unique bow-tie shaped elements, each containing 6-8 bends. As a result, the sculpture may be understood both as a large form when seen from a distance, as well as an assembly of many small parts working together when viewed up close. The sculpture is created entirely from bead blasted stainless steel, with a yellow powder-coated interior surface.

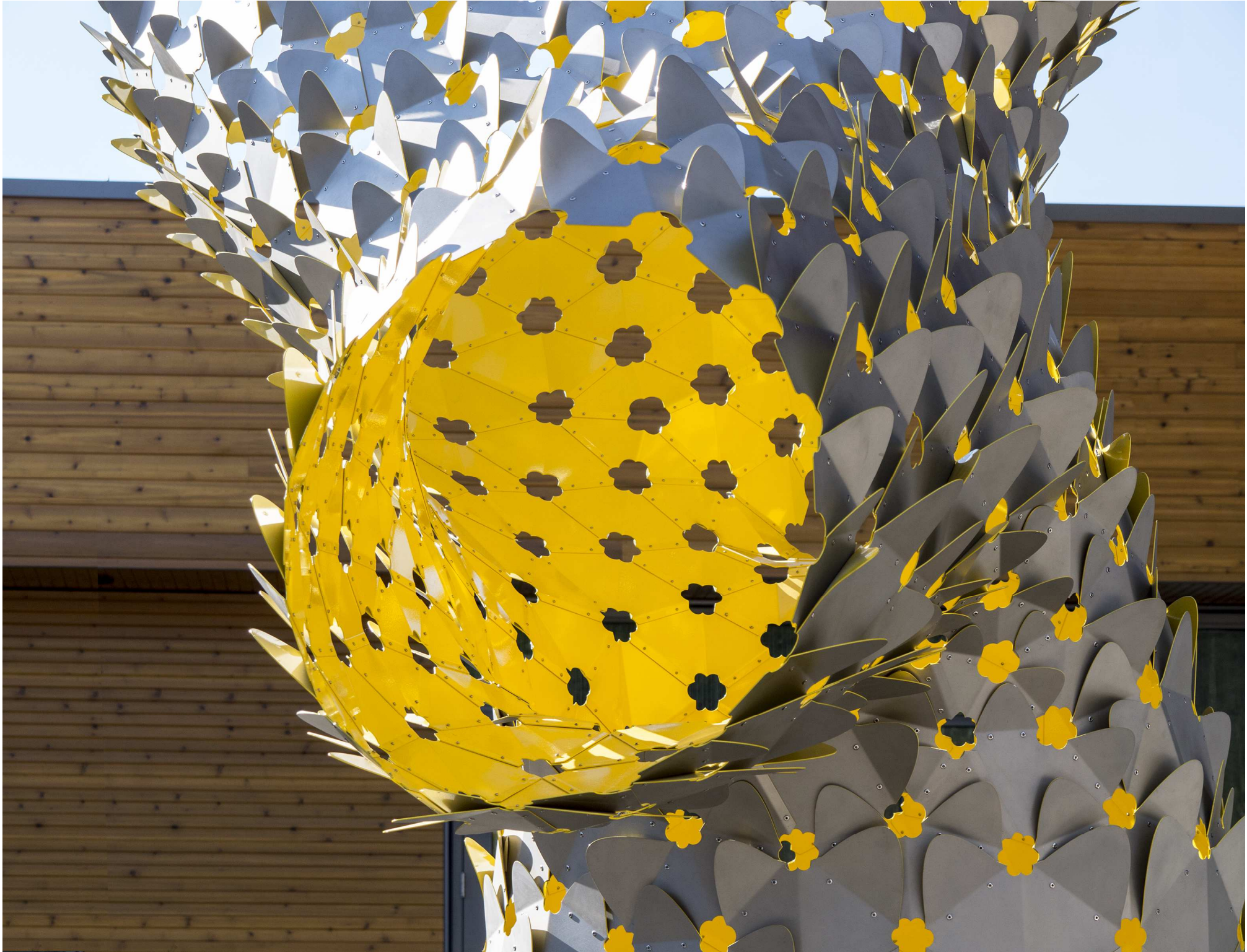














Rob Ley



***Endless Miles***

**Year:** 2018  
**Medium:** Painted Aluminum, Stainless Steel  
**Size:** 160' W x 34' H x 3' D (48.5 x 10.5 x 1 m)  
**Location:** Martin Luther King Jr. Community Hospital, Los Angeles CA  
**Owner:** Los Angeles County Arts Commission

**Description:** This piece is composed of thousands of painted, bent metal panels. When seen up close, the small colorful panels may be read as individual brushstrokes, while from afar the piece is seen as a mosaic-like composition. This large scale artwork frames the major east entrance to the newly expanded Martin Luther King Jr. Hospital in South Central Los Angeles.















Rob Ley



***Pangaea***

**Year:** 2020  
**Medium:** Painted Aluminum, Stainless Steel  
**Size:** 22' W x 26.5' H x 1' D (6.7 x 8 x .3 m)  
**Location:** Atlanta, GA  
**Owner:** Cousins Properties

**Description:** A series of layered aluminum ribbons interact with a field of points located throughout this exterior wall, creating a collection of interconnected nodes, hubs and conduits. The resulting composition is expressive of gestalt principles, or the human compulsion to find order in disorder by perceiving a series of individual elements as a whole. Named after the pre-historic supercontinent of Pangaea, this large scale artwork is a collection of autonomous 'islands' that assemble into a singular, 3-story composition.

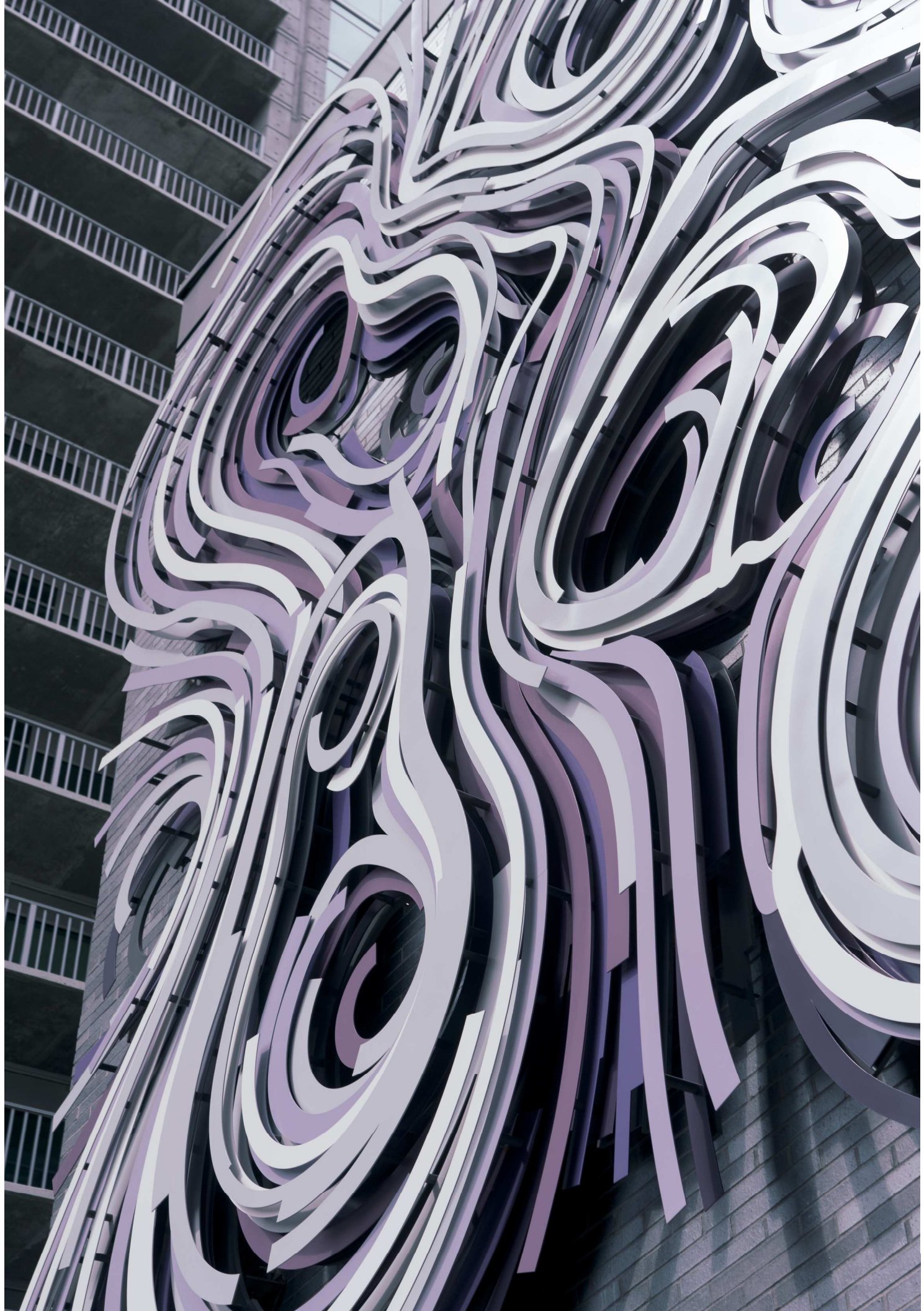






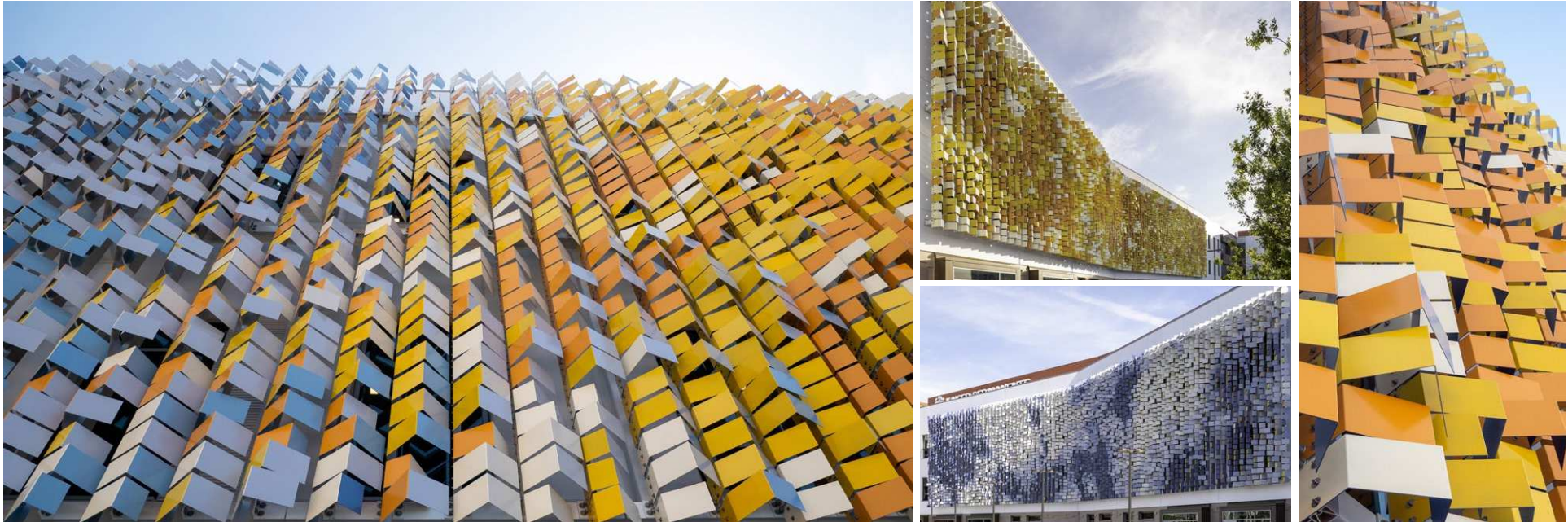








Rob Ley



***Double Exposure***

**Year:** 2019  
**Medium:** Painted Aluminum, Stainless Steel  
**Size:** 151' W x 34' H x 4' D (46 x 10.3 x 1.2 m)  
**Location:** Dublin, CA  
**Owner:** Kaiser Permanente

**Description:** A double exposure is typically associated with an analog technique of taking multiple photographic exposures on top of a single frame of film. The resultant image then exhibits the characteristics of each exposure, superimposed into a single photograph. This large-scale relief sculpture, integrated into the new Kaiser Permanente center, uses two photographs of the natural environment of the Tri-Valley area to create a visually kinetic composition. The first image, as seen when looking west, depicts a golden canopy of leaves taken from the underside of a tree in autumn, while a second image, seen when looking east, depicts a sunny, cloud filled sky.











**Observations and Approach**



Early in this project, I was able to spend time at the site, and along Maude Avenue in particular. What struck me as being unique was the visual and spatial experience of standing beneath and traveling past the significant Maple, Oak, and Cypress trees that frame the avenue. In approaching this opportunity, I am interested in creating an artwork that responds and contributes to the changing foliage textures and colors that contribute to the urban experience.

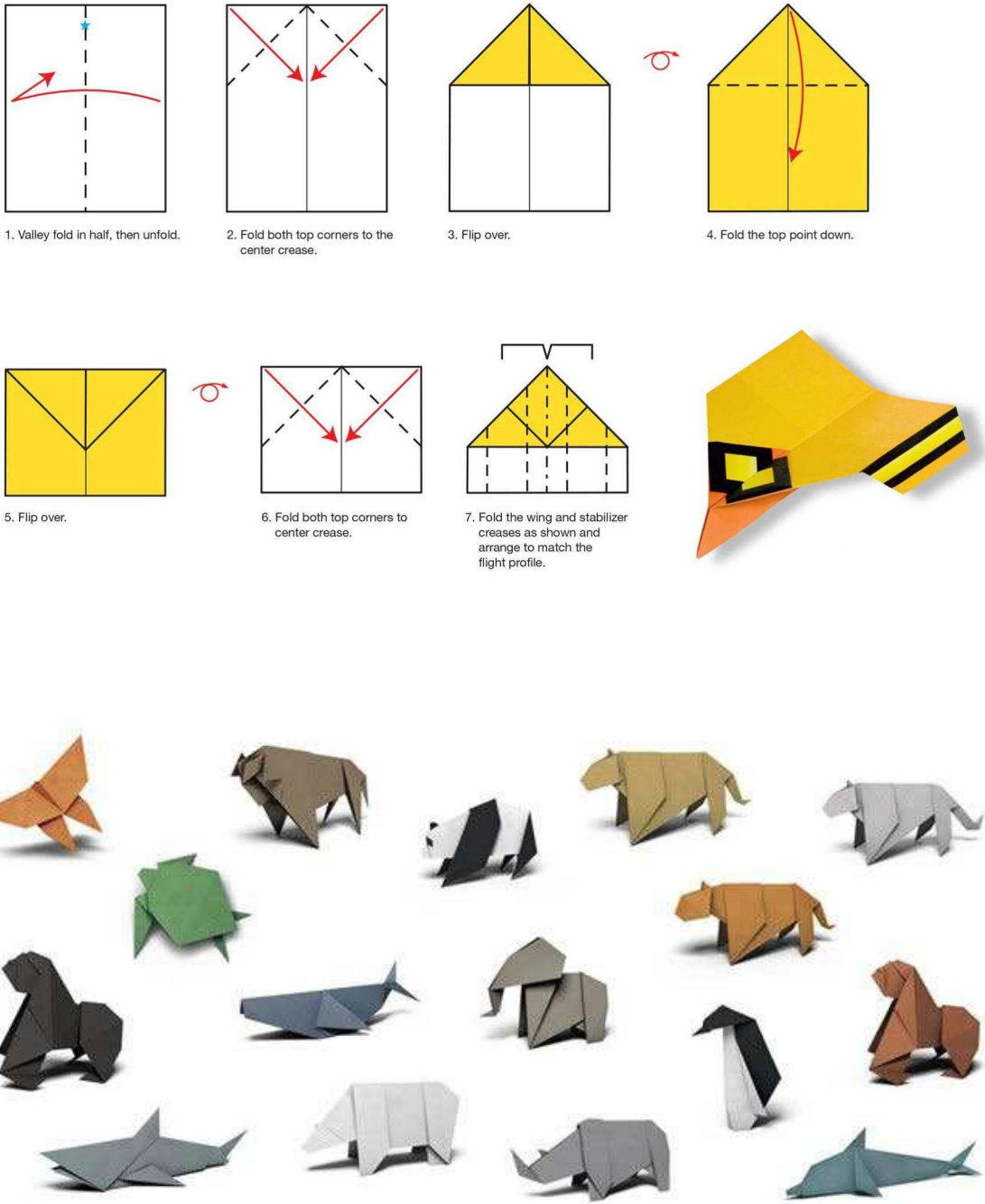


## Artwork Conceptual - Small to Large Scale

Folded Forest (working title) is a 3-part artwork that wraps three sides of the garage building at the Catalyst development. Each section's overall dimensions are approximately (Side 1) 110'w x 44'h, (Side 2) 256'w x 44'h, and (Side 3) 70'w x 44'h. The significant scale and location of the artwork allows for an engaging experience for both pedestrians as well as those traveling by car, bus, or bicycle along Maude, Potrero, and Pastoria Avenues.

This proposed artwork exists in between the realm of 2D and 3D space, between a painting and a sculpture. Folding, as an operation, allows flat paper to develop varying degrees of depth. With minor instruction, a child can bend, fold, and crease a single sheet of paper into a beautiful and functional glider and in the hands of a skilled practitioner of Origami, the same piece of paper can form into figurative animals and complex geometric compositions.

The underlying concept of this proposal is the creation of a large-scale public artwork that creates 3 separate, though connected foliage sculptures through the origami-like folding of metal forms.







Much of my work is a result of an interest in the relationship of the **part to the whole**. An approach where we can understand something when we are close to it as being singular, and individual





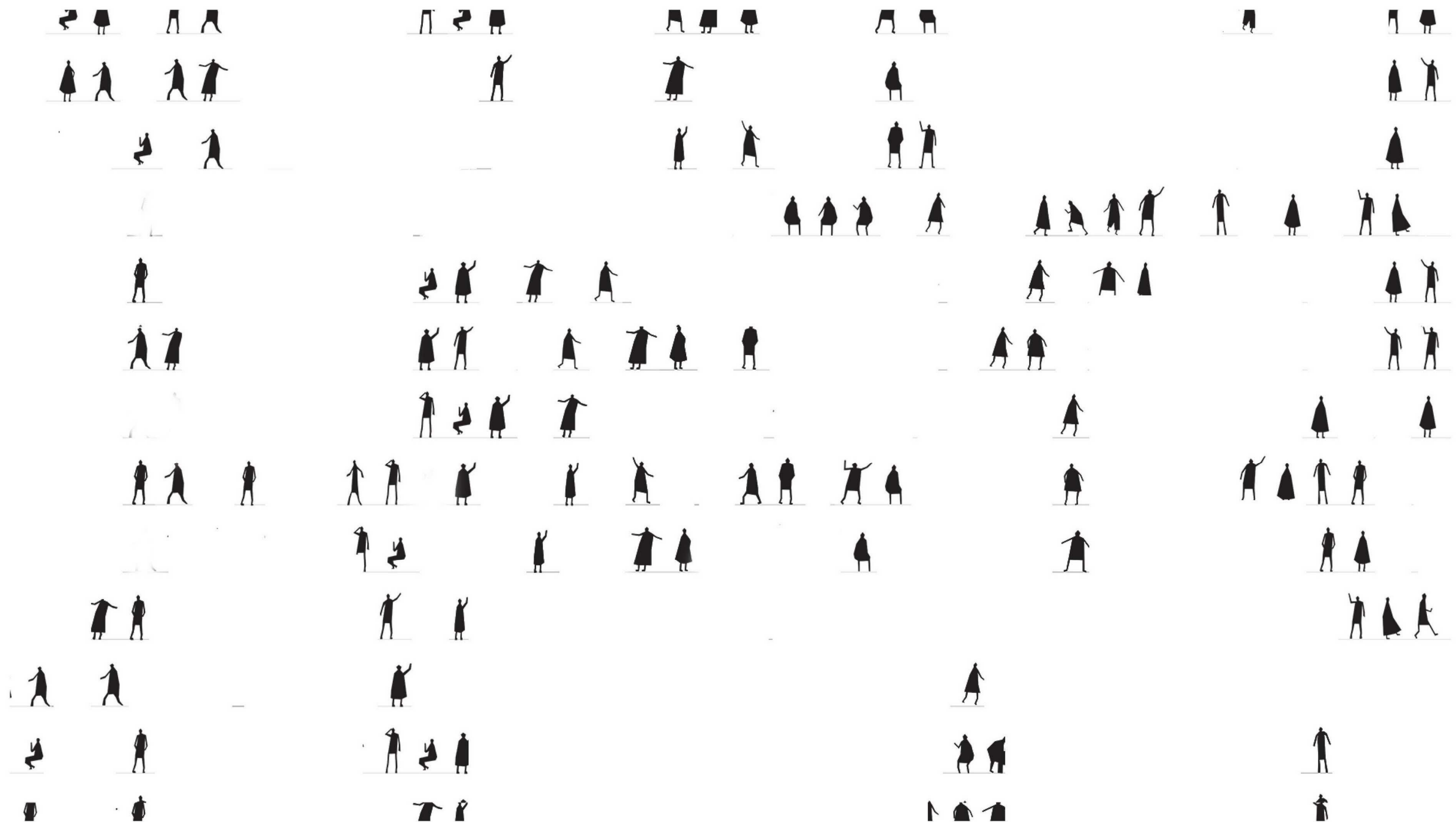
Much of my work is a result of an interest in the relationship of the **part to the whole**. An approach where we can understand something when we are close to it as being singular, and individual

And as we pull back, you can see that the many parts start to act together as a unified whole, without losing their own individual qualities.

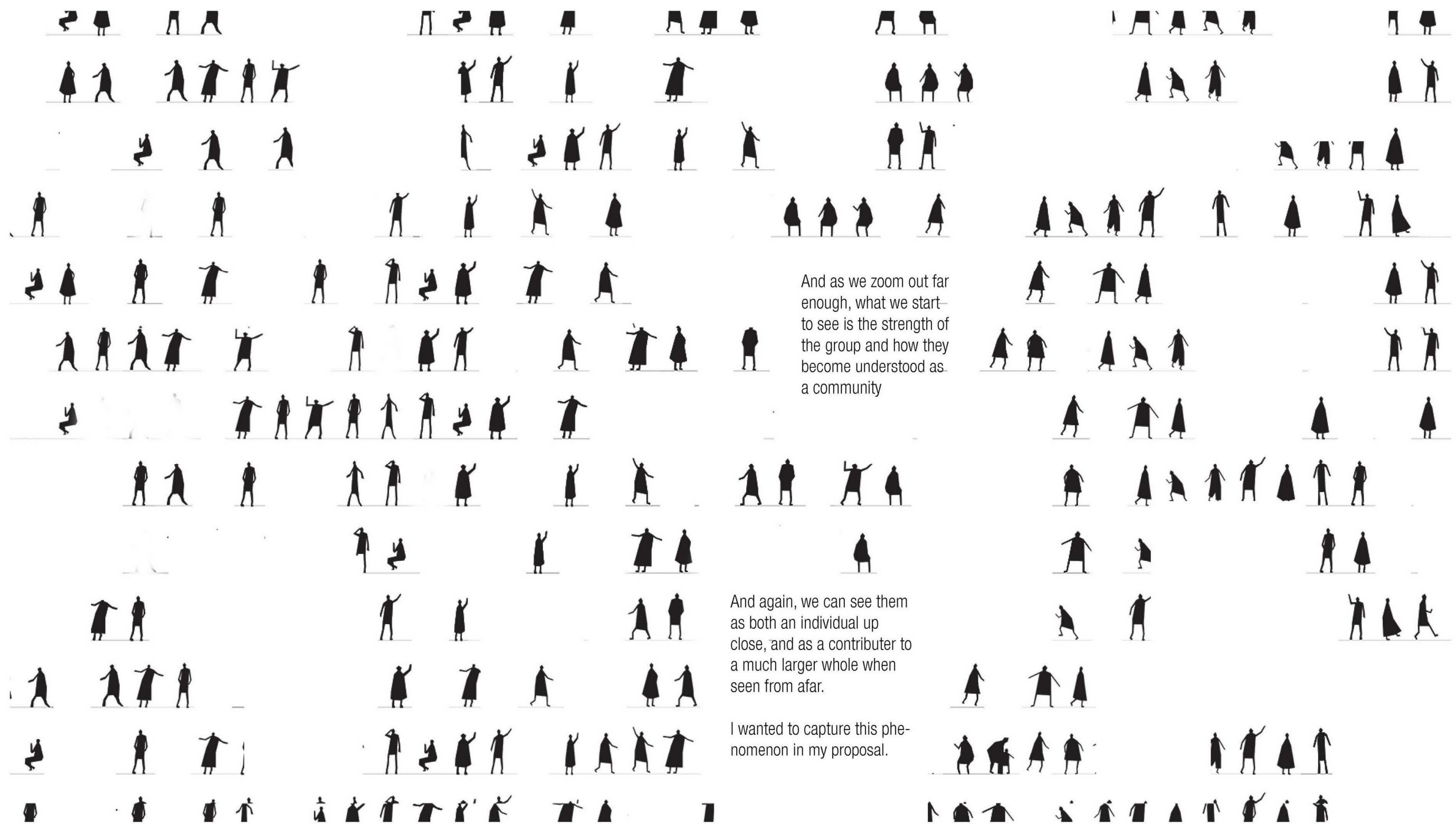








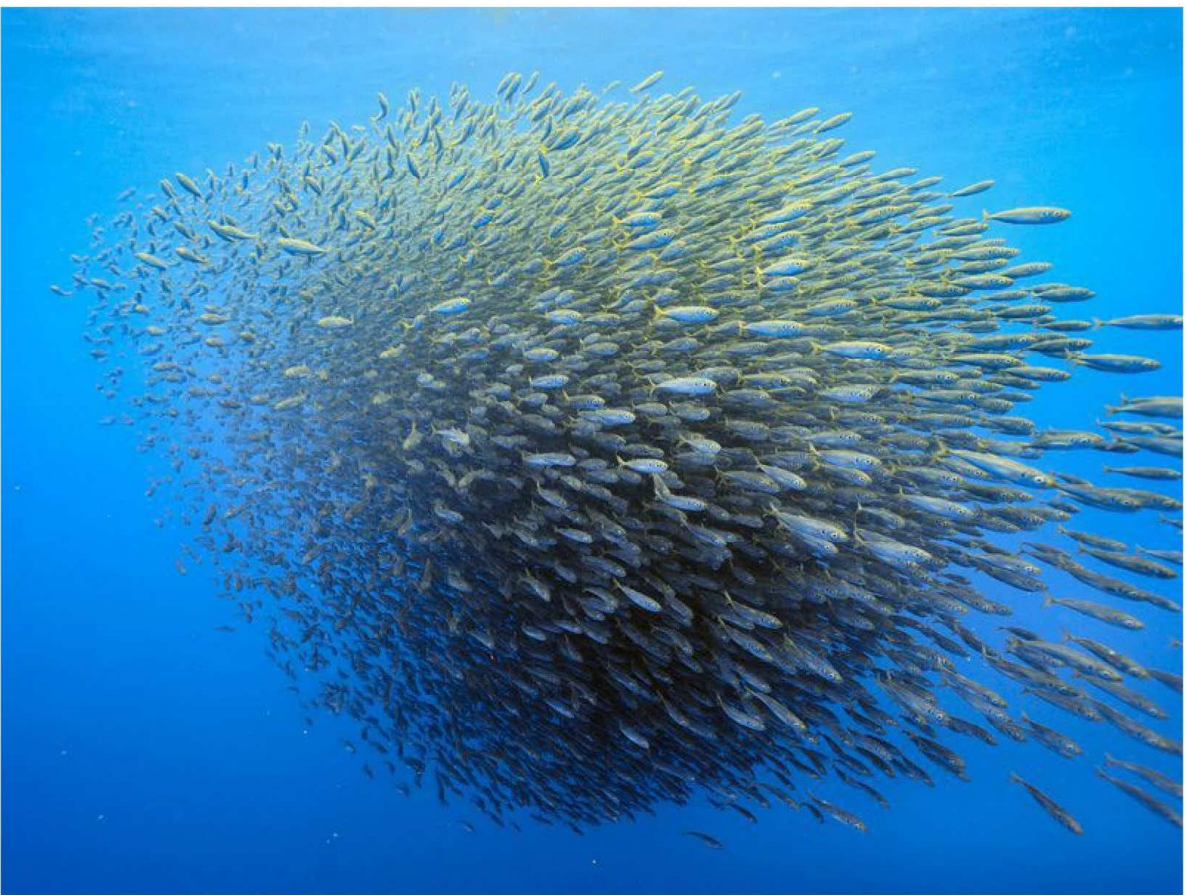






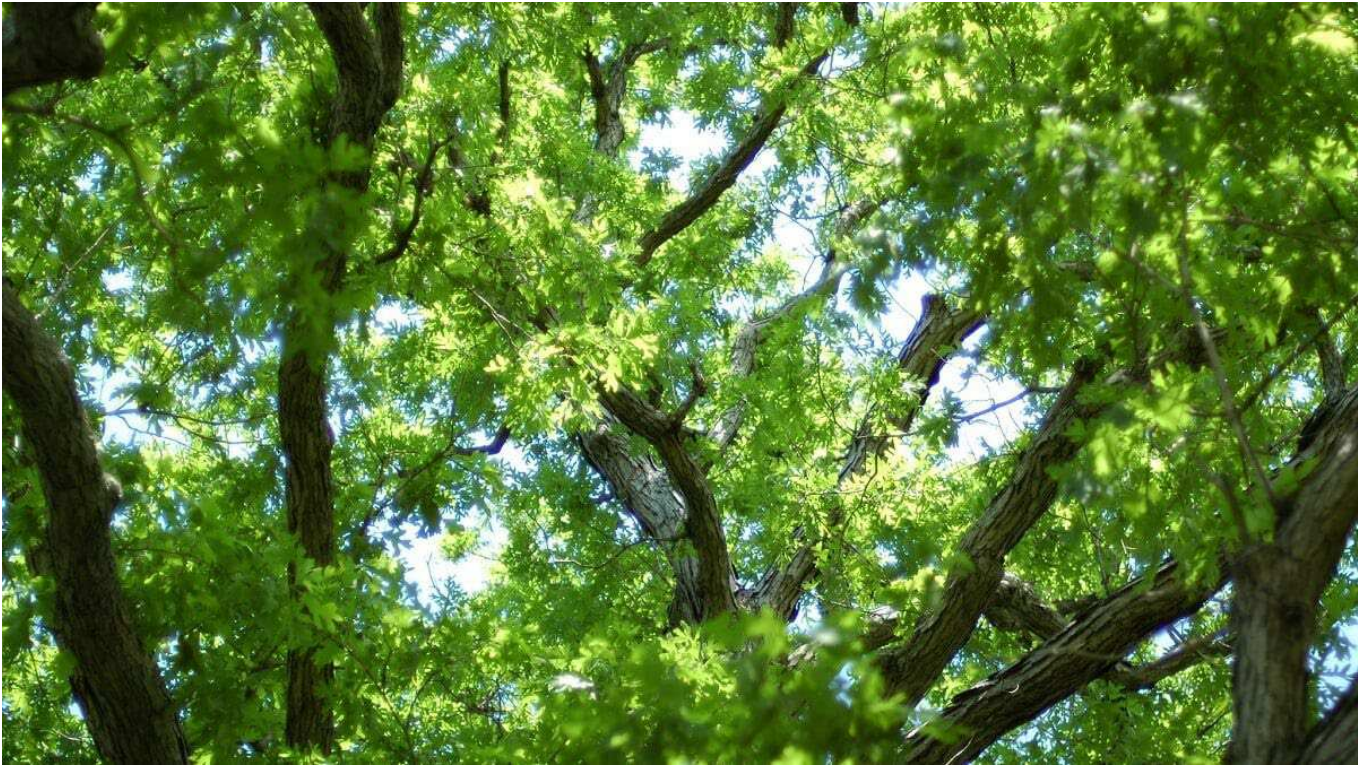






Thousands of individual fish travelling together in a school

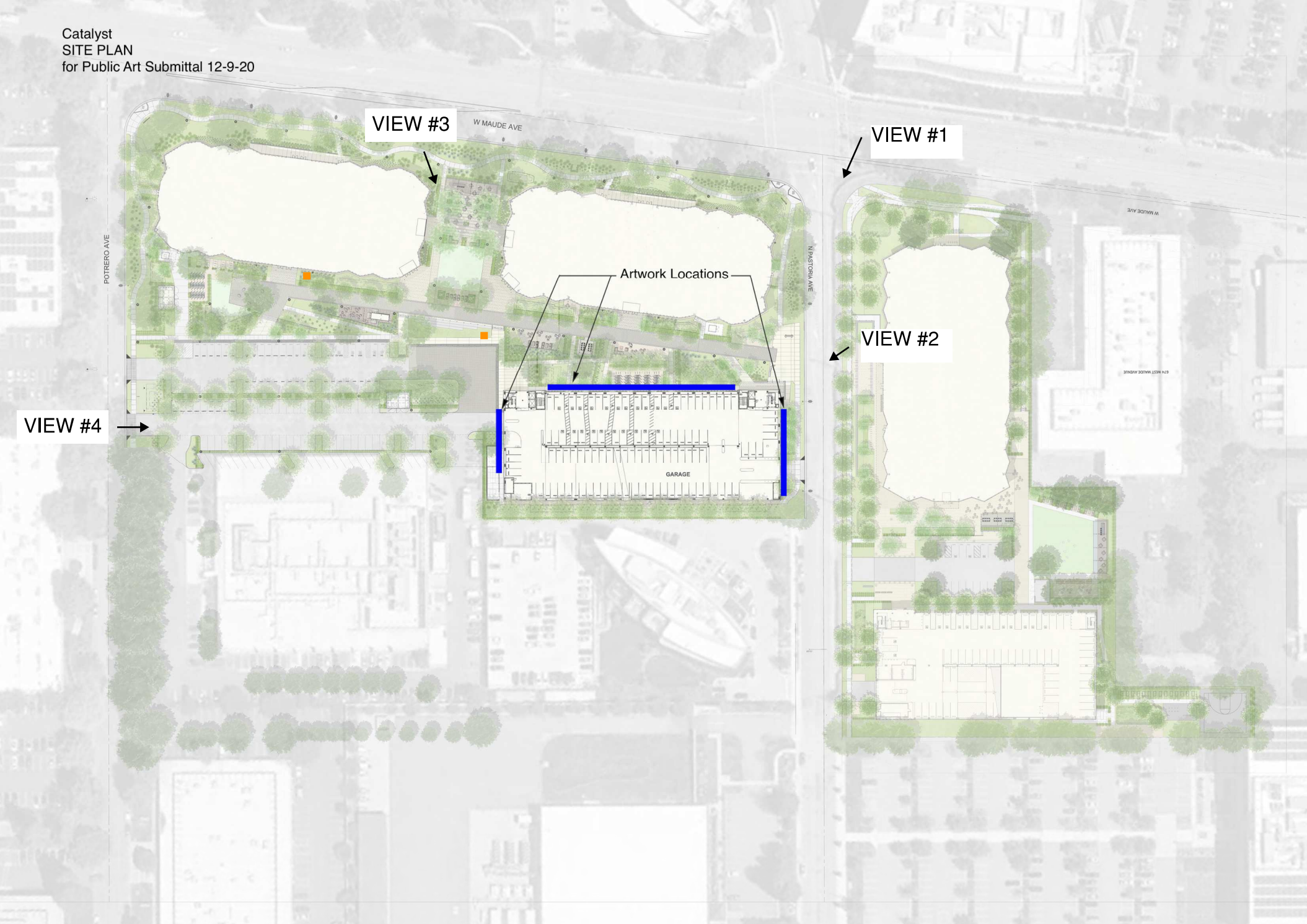




























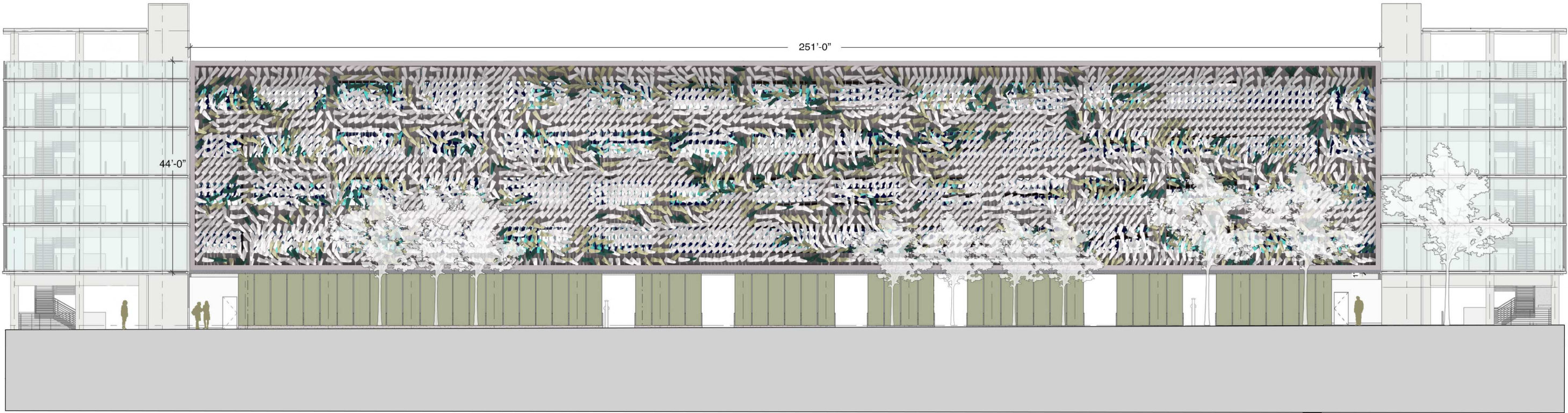




**EAST ELEVATION**  
3/32" = 1'-0"



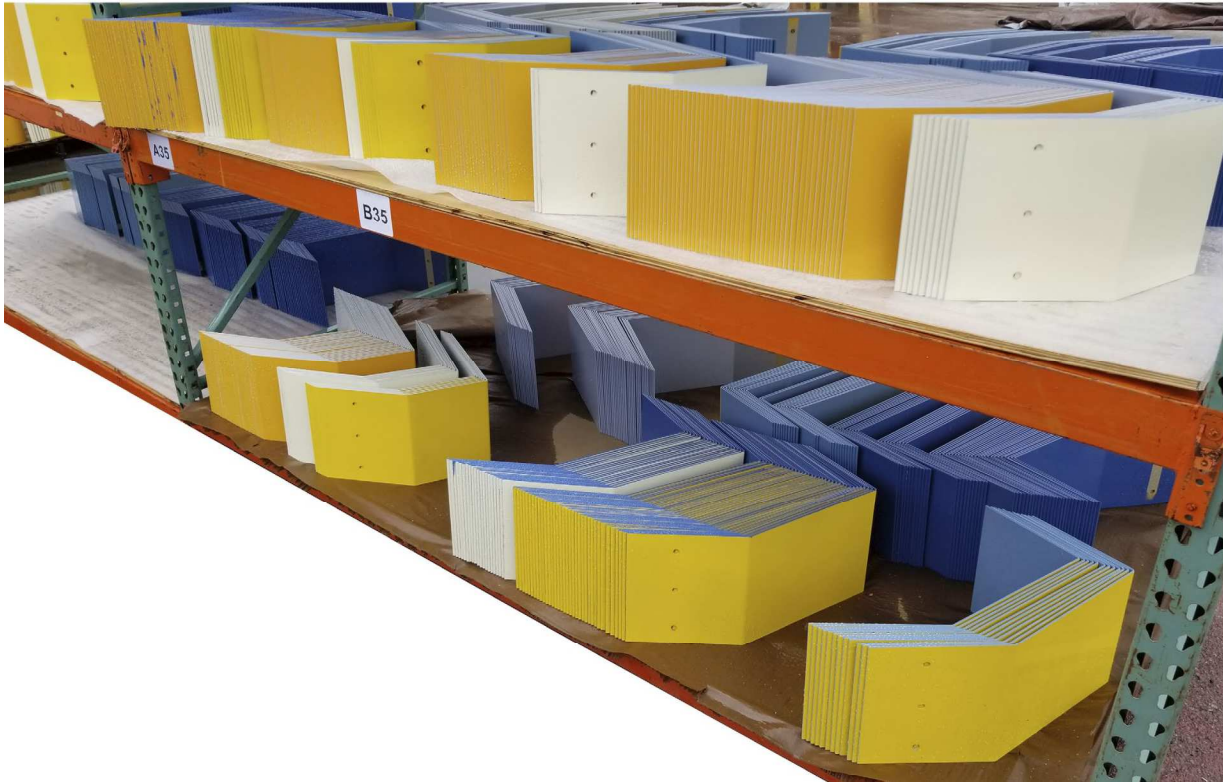
**WEST ELEVATION**  
3/32" = 1'-0"







*Images above and to the left - Past projects by Artist showing combination of painted aluminum plate elements, fastened to aluminum extrusion structure.*



**Artwork Material Samples**

The Artwork is to be fabricated from aluminum, stainless steel, and coated structural steel elements.

- “**Leaf**” elements to be constructed from 3/16” thick 5052 Aluminum plate material, coated with high-durability urethane paint.
- **Vertical structural elements** to be constructed from custom aluminum T-slot extrusions.
- **Horizontal structural elements** to be constructed from structural steel, coated with high-durability urethane paint.
- All **fasteners** to be stainless steel and/or weather rated galvanized hardware.





## Artwork Material Samples

The Artwork is to be fabricated from aluminum, stainless steel, and coated structural steel elements.

- “**Leaf**” elements to be constructed from 3/16” thick 5052 Aluminum plate material, coated with high-durability urethane paint.
- **Vertical structural elements** to be constructed from custom aluminum T-slot extrusions.
- **Horizontal structural elements** to be constructed from structural steel, coated with high-durability urethane paint.
- All **fasteners** to be stainless steel and/or weather rated galvanized hardware.

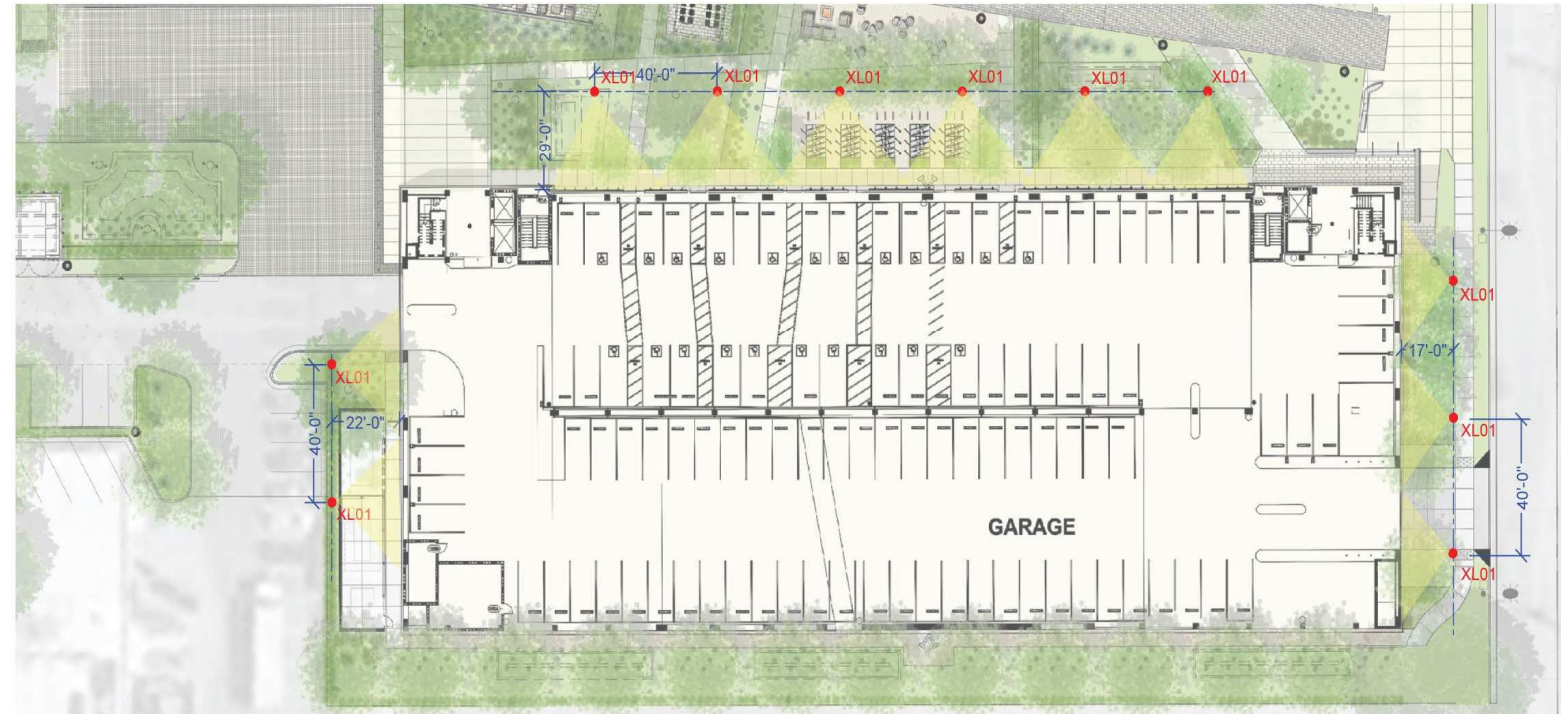


*Images above - Past projects by Artist showing painted aluminum plate elements with fade-resistant Urethane color coating.*

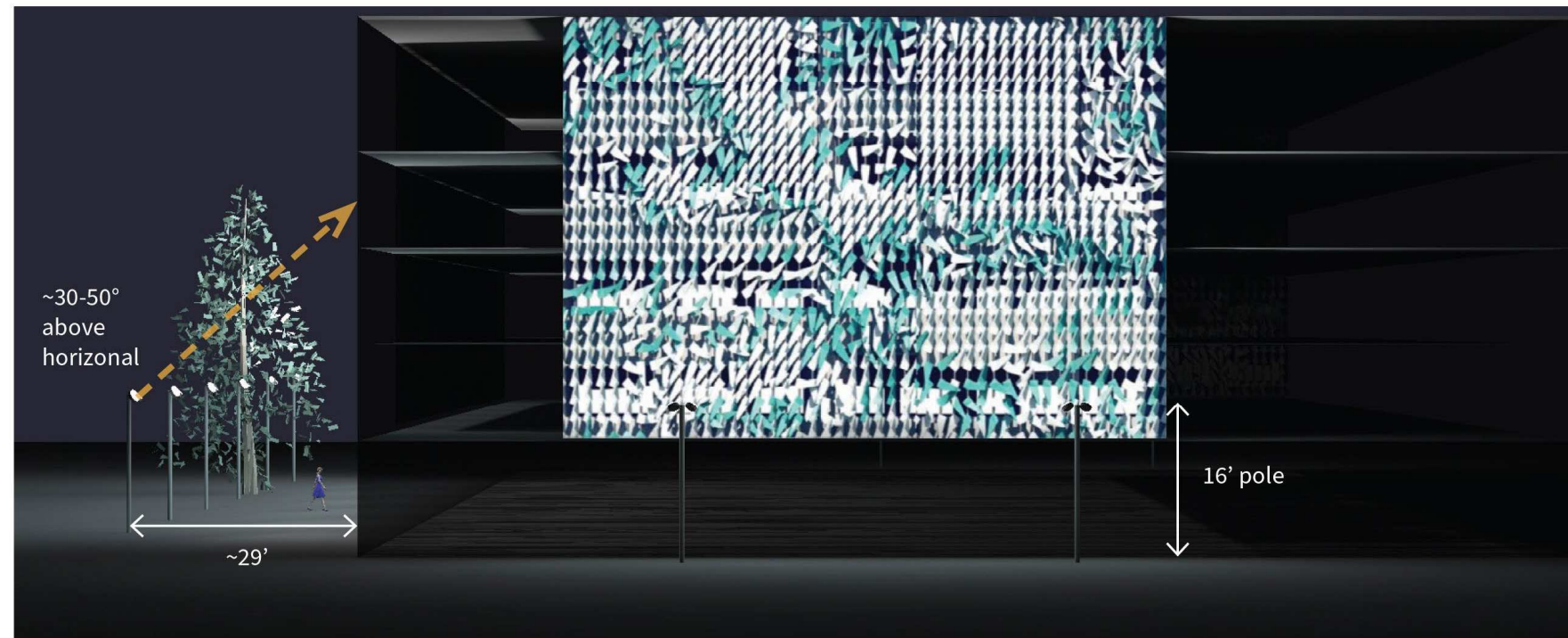
*Image to left - 3/16” thick aluminum plate material press formed into final sculptural forms.*



## Artwork Lighting



Plan



Elevation

2 adjustable white light fixtures with ~60 degree beam optics are mounted on 16' poles (Type XL01 and XL01A) are located approximately 18' - 35' away from the vertical surface of the art piece.

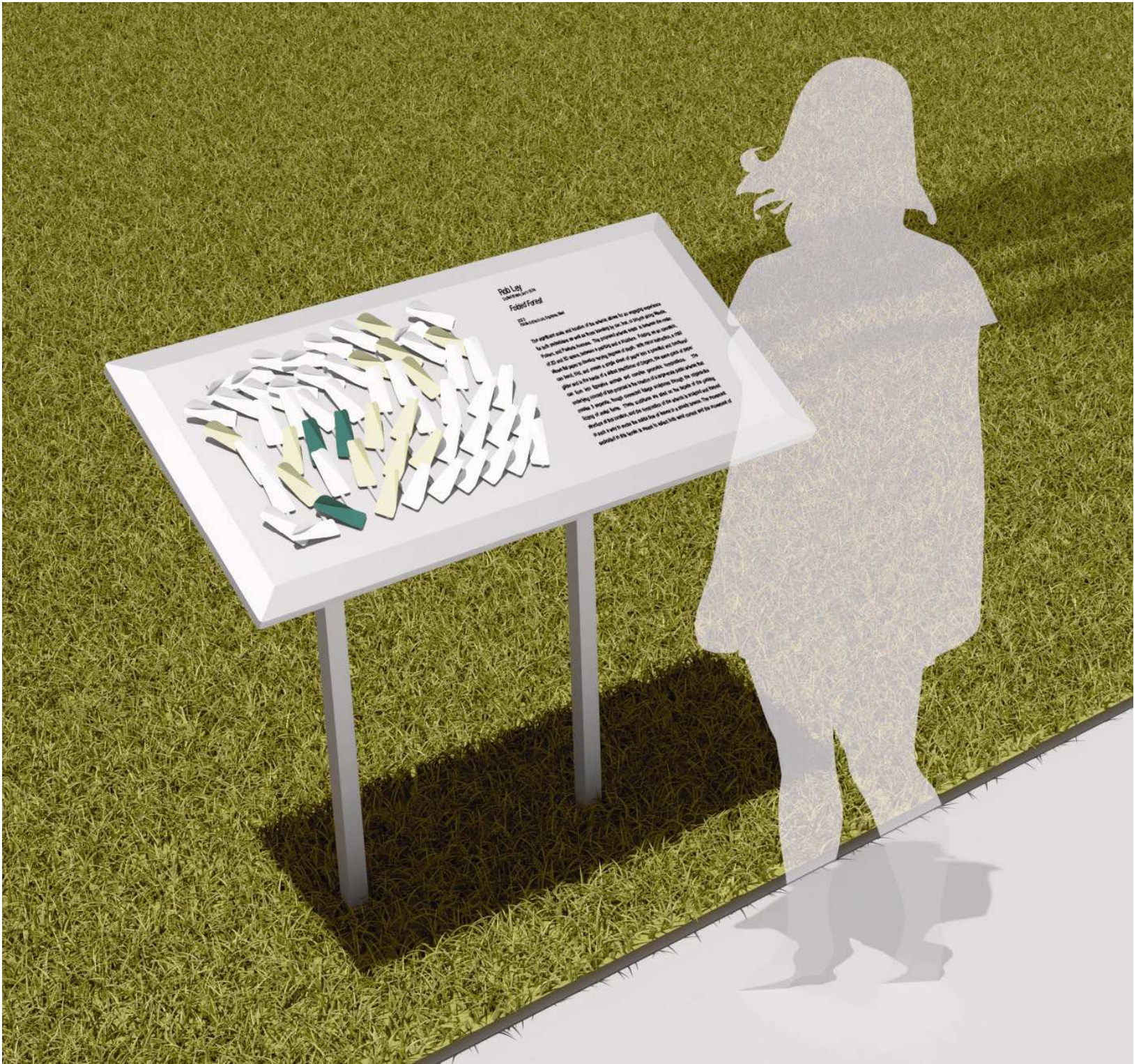
A 30-50 degree tilt will illuminate the height of the art piece uniformly. The fixtures can be oriented horizontally to uniformly illuminate the piece across its width.

Fixture sample mock-ups will be necessary to determine what optical accessories may be required to achieve the desired lighting effect. Possible accessories are glare mitigation devices like visors, snoots, and hexcell louvers as well as beam distorting devices like linear spread lenses.

Artwork lighting has been coordinated with the landscape plan to ensure that light will not be blocked by trees and other plants.



Interpretive Plaque



Situated on the W. Maude side of the project, along the adjacent side-walk, an interpretive plaque is planned. This plaque will include both a written description of the artwork and its inspiration, as well as a reduced sized sample of the sculptural elements that visitors will be encouraged to touch and interact with. The artist will work with the City to determine the best size and location of this descriptive plaque.







