



Sunnyvale

1100 N Mathilda Avenue
2017-8044

Project Planner – Shetal Divatia

Planning Commission Study Session– February 22, 2021

Former Sheraton Hotel-Background

Approved Jan 2019

- ◆ 358-room hotel expansion project
- ◆ November 2019 - construction cost issues
- ◆ March 2020 – COVID impact

Current modified project – Reduced Project

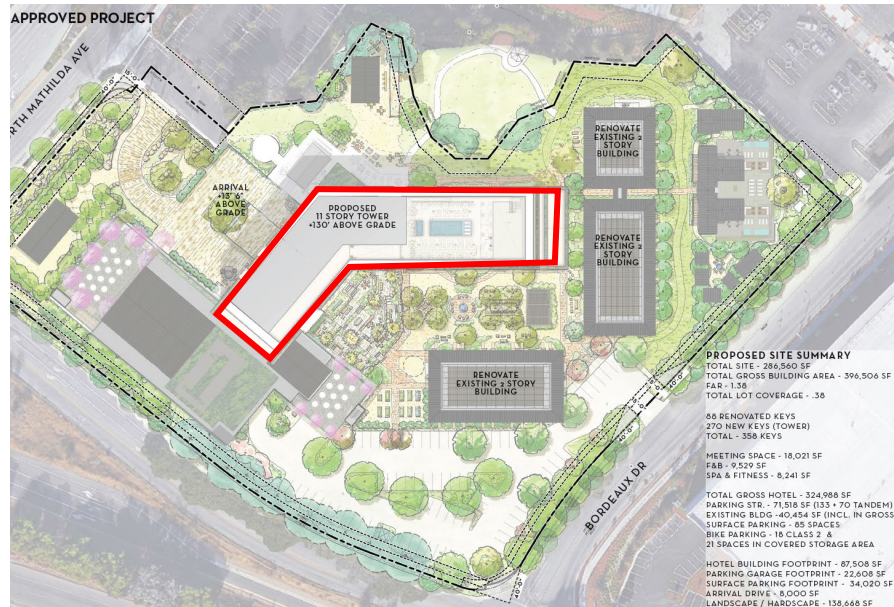
- ◆ 254-room hotel
- ◆ Surface parking
- ◆ Different architectural style and site layout

Comparison of Approved and Proposed Projects:

	Approved 2019	Proposed 2021
Hotel Rooms	358	254
Building Stories	11	6
Meeting Area (sf)	18,000	8,000
Spa (sf)/Fitness	8,000	2,300
Food/Beverage (sf)	7,000	7,000
Parking Spaces	296 (203 structured)	274 (all surface)
Architectural Style/ Colors	Modern Napa Warm colors and organic materials	Modern Minimalist Blue and brown tones

Approved and Proposed: Site Plans

Approved 2019



Proposed 2021



Views – Mathilda Intersection

Approved 2019



Proposed 2021



Hotel Entrance

Approved 2019

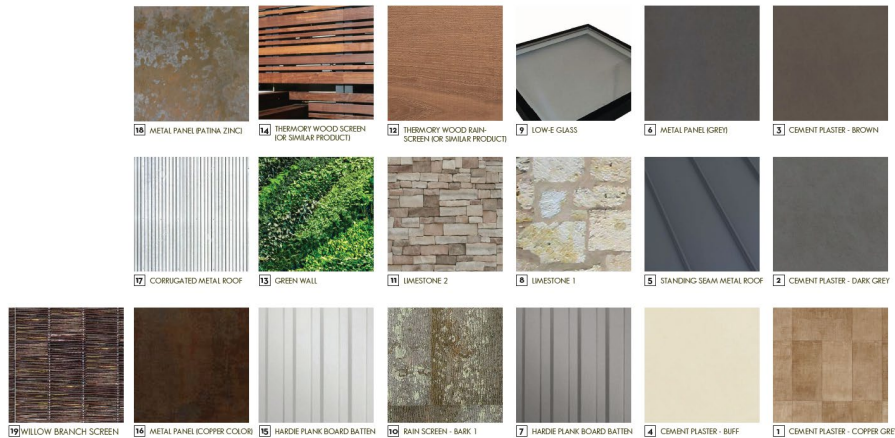


Proposed 2021

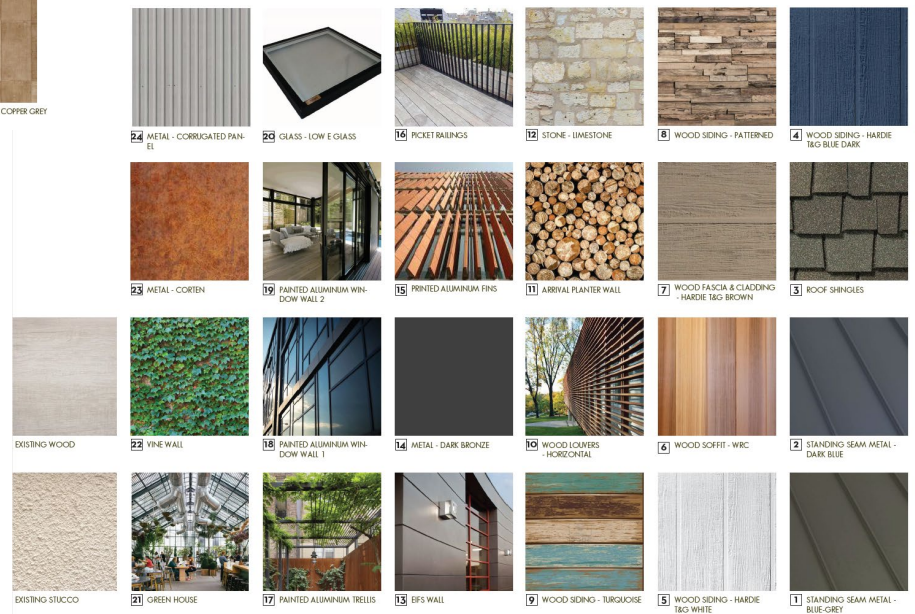


Materials and Color Palette

Approved 2019



Proposed 2021



Approved Project – Final Conditions of Approval

GC: THE FOLLOWING GENERAL CONDITIONS AND STANDARD DEVELOPMENT REQUIREMENTS SHALL APPLY TO THE APPROVED PROJECT.

GC-1. CONFORMANCE WITH APPROVED PLANNING APPLICATION:

All building permit drawings and subsequent construction and operation shall substantially conform with the approved planning application, including: drawings/plans, materials samples, building colors, and other items submitted as part of the approved application. Any proposed amendments to the approved plans or Conditions of Approval are subject to review and approval by the City. The Director of Community Development shall determine whether revisions are considered major or minor. Minor changes are subject to review and approval by the Director of Community Development. Major changes are subject to review at a public hearing. [COA] [PLANNING]

Planning Commission Comments:

1. Confirm review process
2. Comments on proposed project design
 - ◆ Site layout
 - ◆ Architectural design