

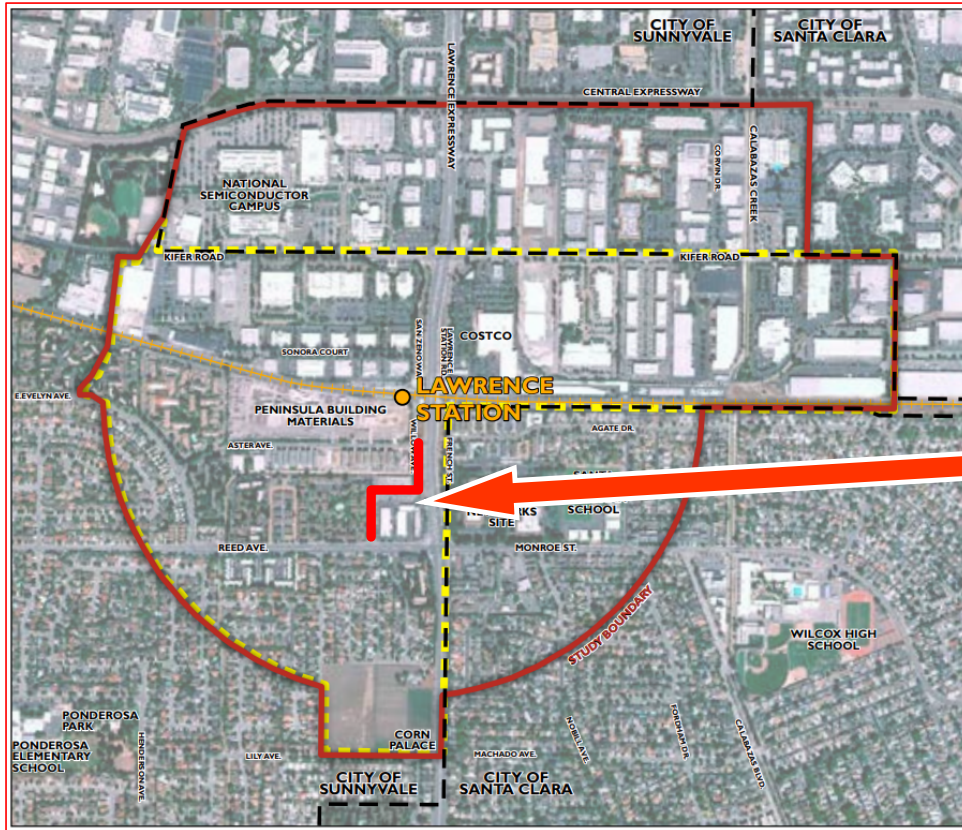


Willow Avenue Bicycle and Pedestrian Improvements

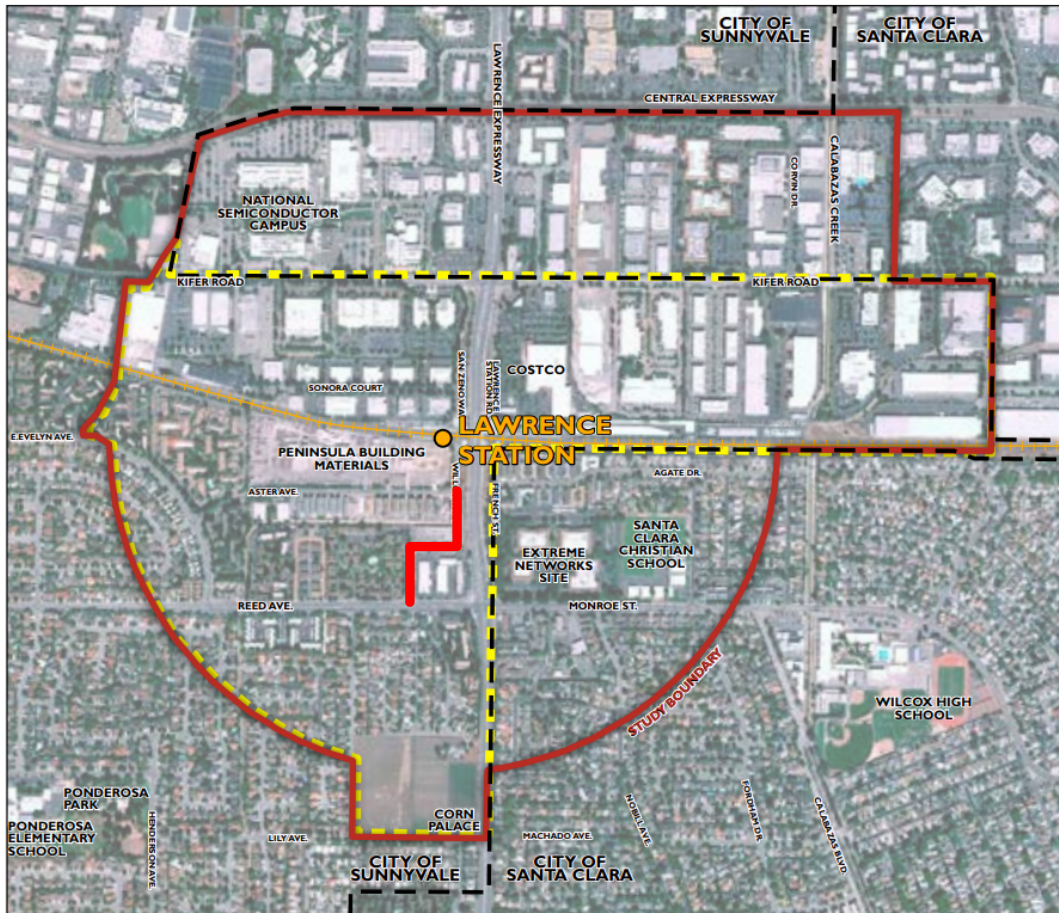
Lillian Tsang, Principal Transportation Engineer
Richard Chen, Project Design Manager
July 15, 2021



Project Limits: Willow Avenue between Reed Avenue and Aster Avenue

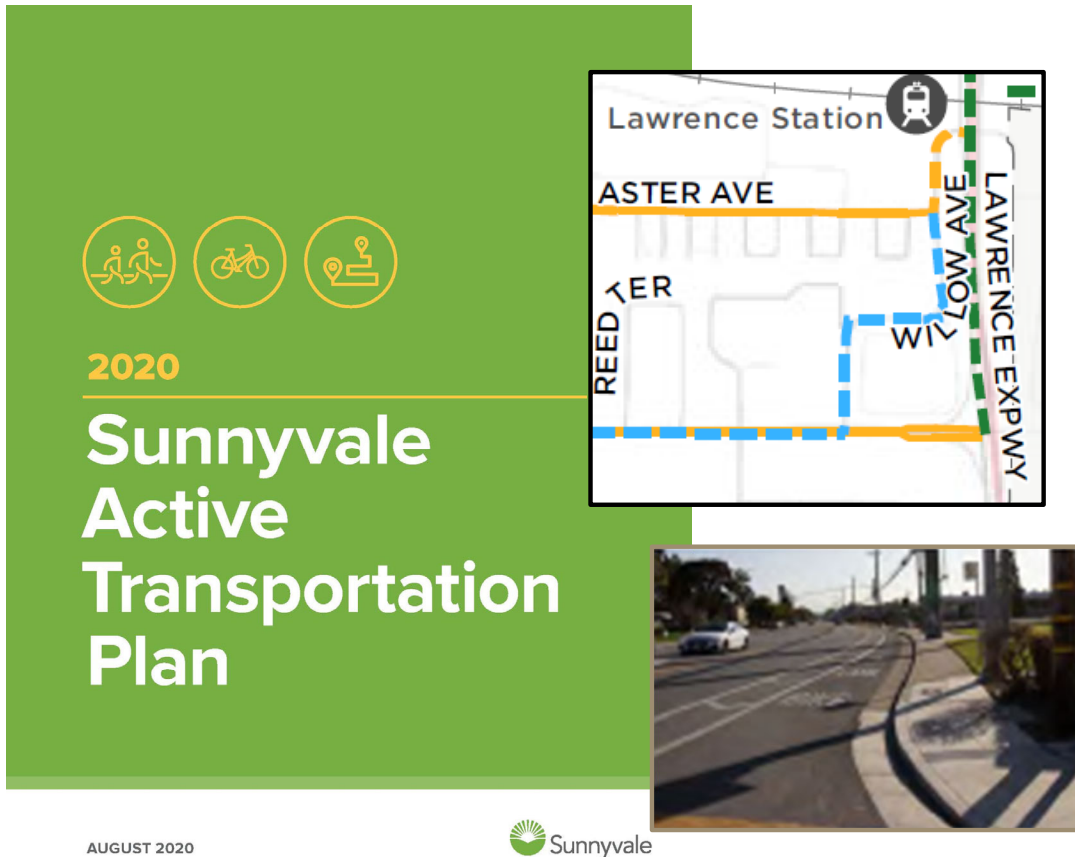


Lawrence Station Area Plan (LSAP)



- Adopted by City Council on December 6, 2016
- Willow Avenue
 - ◆ Key Access Route for Pedestrians and Bicyclists to access Lawrence Caltrain Station
 - ◆ Design Goal: To be safe and attractive for residents who walk or ride to the station
 - ◆ Improve Sidewalk Gaps
 - ◆ Proposed Class II Bicycle Lane

Active Transportation Plan (ATP)



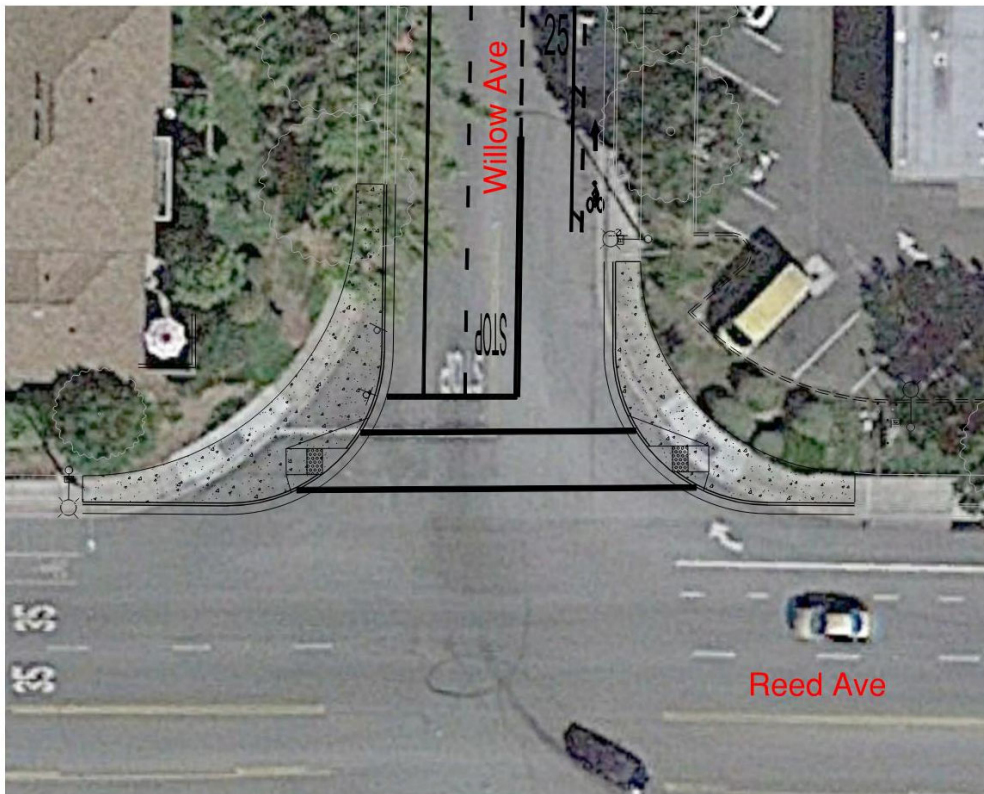
- Adopted by City Council on August 25, 2020
 - ◆ Bicycle Plan
 - ◆ Pedestrian Plan
 - ◆ Safe Routes to School Plan
 - ◆ To create a safe, connected and efficient citywide walking and bicycling network
- Willow Avenue
 - ◆ Proposed Class II/IIB Buffered Bicycle Lane

Caltrain Business Plan



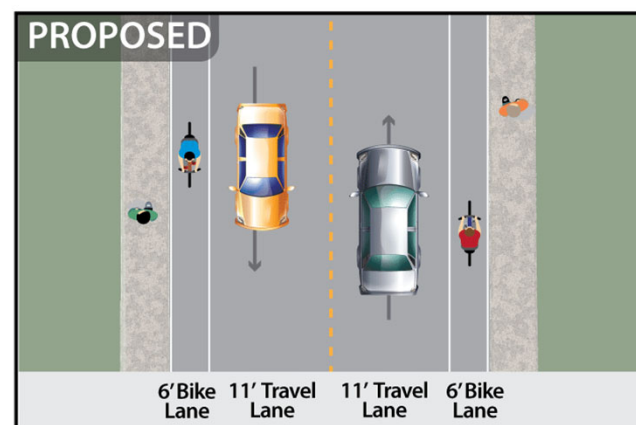
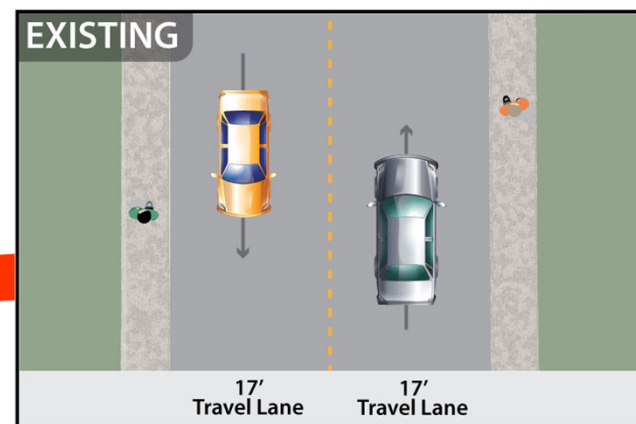
- Completed Spring 2020
 - ◆ Review Service for the Corridor
 - Number of Trains
 - Frequency of Service
 - Stop Location
- Increase service to Lawrence Station
 - ◆ Increase in Pedestrians/Bicyclists

Willow Avenue - Pedestrian Improvements

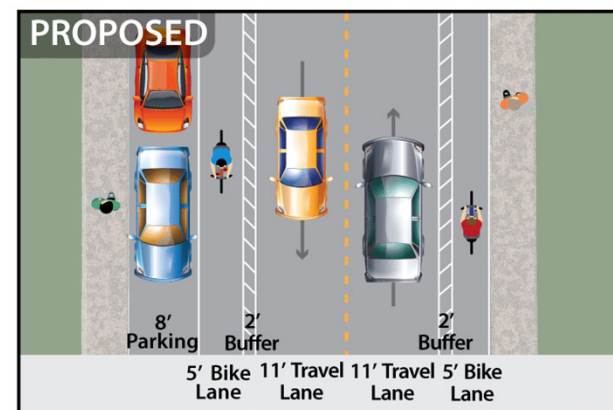
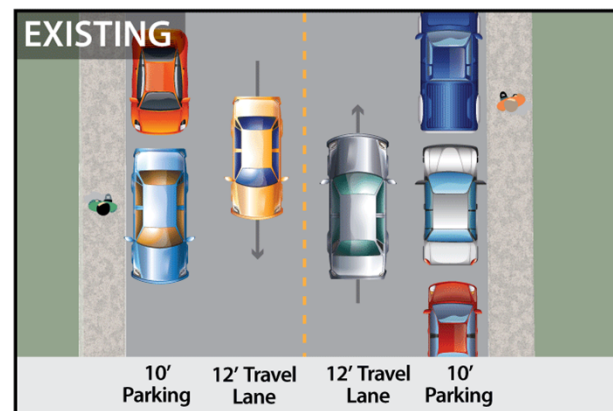


- Reduce curb radius at the NW and NE corners
- Install ADA accessible, directional curb ramp for crossing Willow Ave.
- Install a crosswalk on Willow Ave.

Willow Avenue - Bicycle Improvements

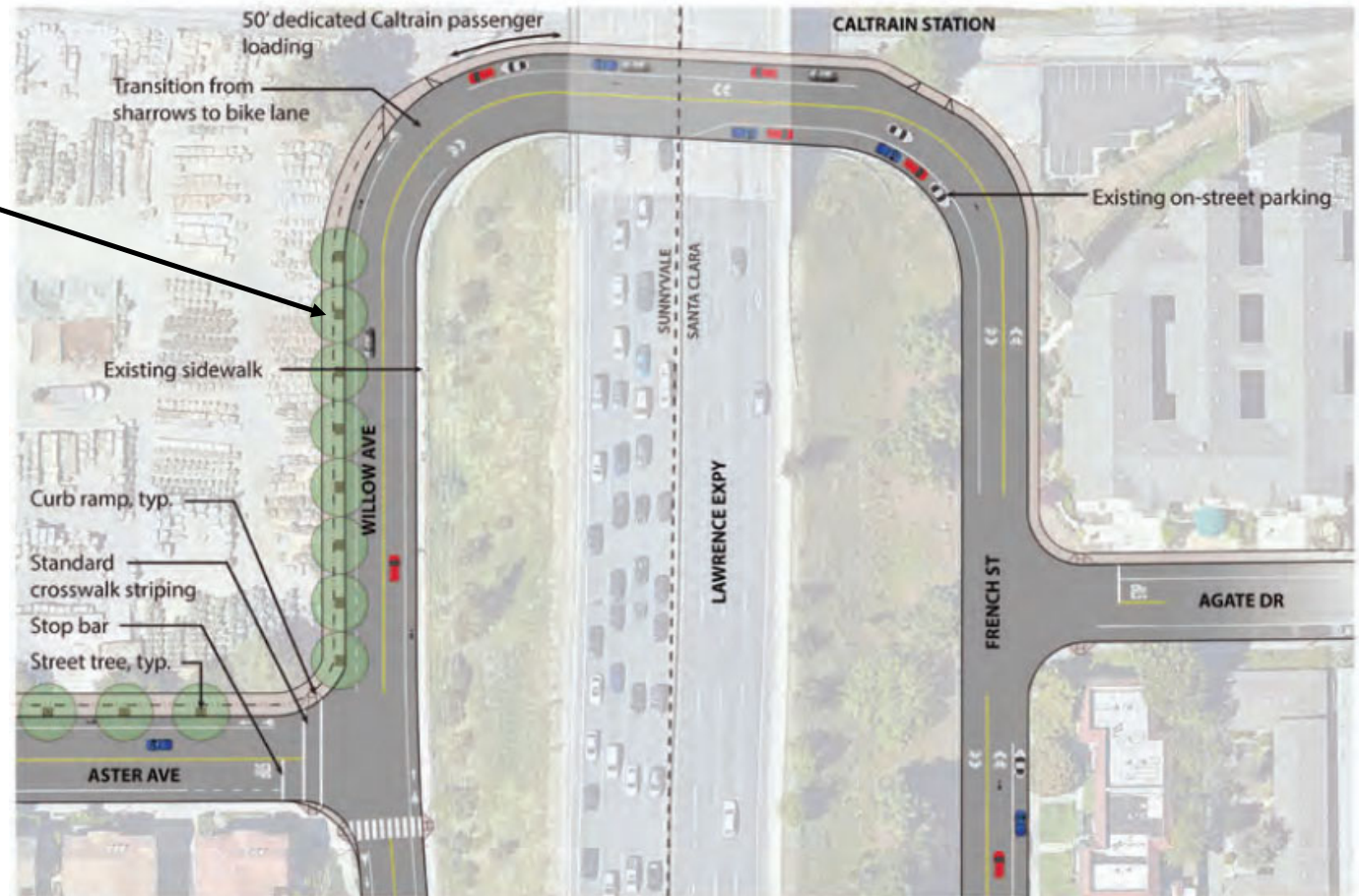


Willow Avenue - Bicycle Improvements



Draft Lawrence Station Area Sense Of Place Plan Willow Avenue and French Street Plan

Proposed Sidewalk & Class II Bicycle Lane to be installed as part of the 1155 Aster Avenue Development Project



Note: All improvements shown are conceptual and subject to further analysis and refinement.

Willow Avenue On-Street Parking Study Area



- Collected data:
 - ♦ March 24, 2021
 - ♦ March 31, 2021
 - ♦ April 28, 2021
 - ♦ May 5, 2021
- Throughout the Day:
 - ♦ 11:00am
 - ♦ 3:30pm
 - ♦ 11:00pm

Legend

- On-street parking to remain
- On-street parking proposed to be removed

Willow Avenue On-Street Parking Study

Study Area	Available Spaces	Number of Parked Vehicles Observed			
		3/24/21	3/31/21	4/28/21	5/5/21
Willow Ave. (SB Direction)					
11:00 a.m.	23	12	13	15	13
3:30 p.m.	23	15	15	13	13
11:00 p.m.	23	16	17	16	18
Willow Ave. (NB Direction)					
11:00 a.m.	24	19	19	19	18
3:30 p.m.	24	17	21	19	18
11:00 p.m.	24	20	19	19	20
Willow Ave. (Combined)					
11:00 a.m.	47	31	32	34	31
3:30 p.m.	47	32	36	32	31
11:00 p.m.	47	36	36	35	38

Willow Avenue On-Street Parking Study Resident vs. Non-Resident Parking

- Resident Parking
 - ◆ Parked on Willow Ave. more than one day
 - ◆ Parked on Willow Ave. at Night (or all-day)
 - ◆ Non-RVs or Vans

- Non-Resident Parking (Employees/Patrons from nearby Auto Repair Shops)
 - ◆ During daytime only (11am and/or 3:30pm)
 - ◆ 1 of 4 days of observation
 - ◆ RVs or Vans

Willow Avenue On-Street Parking Study With NB On-Street Parking Removal & Non-Resident Adjustment

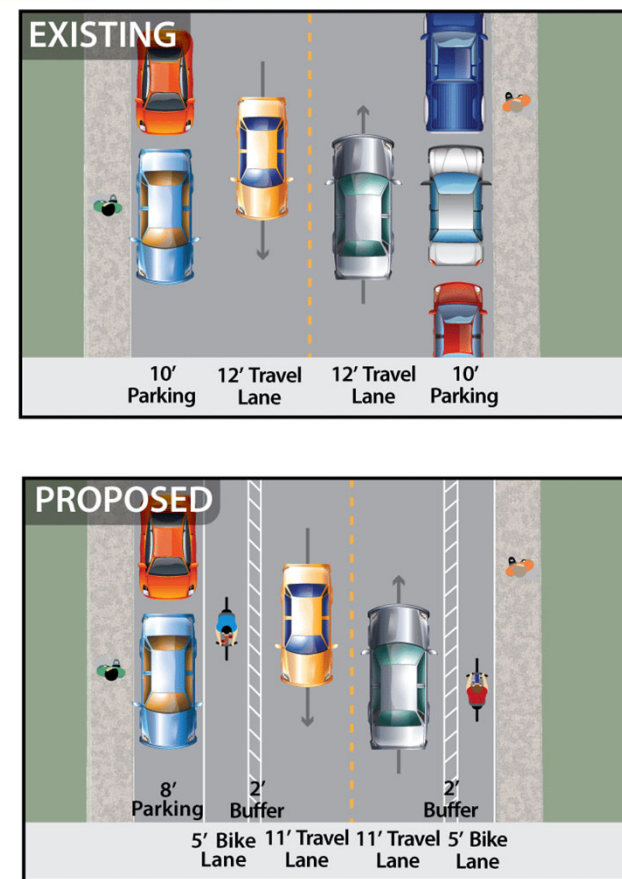
Willow Ave.	Available Spaces	Number of Parked Vehicles			
		3/24/21	3/31/21	4/28/21	5/5/21
On-Street Parking Observed					
11:00 a.m.	47	31	32	34	31
3:30 p.m.	47	32	36	32	31
11:00 p.m.	47	36	36	35	38
With Non-Resident Adjustment & On-Street Parking Removal for NB Direction (Right Side of Willow)					
11:00 a.m.	23	15	15	16	15
3:30 p.m.	23	14	16	14	14
11:00 p.m.	23	20	20	19	21

Conclusion

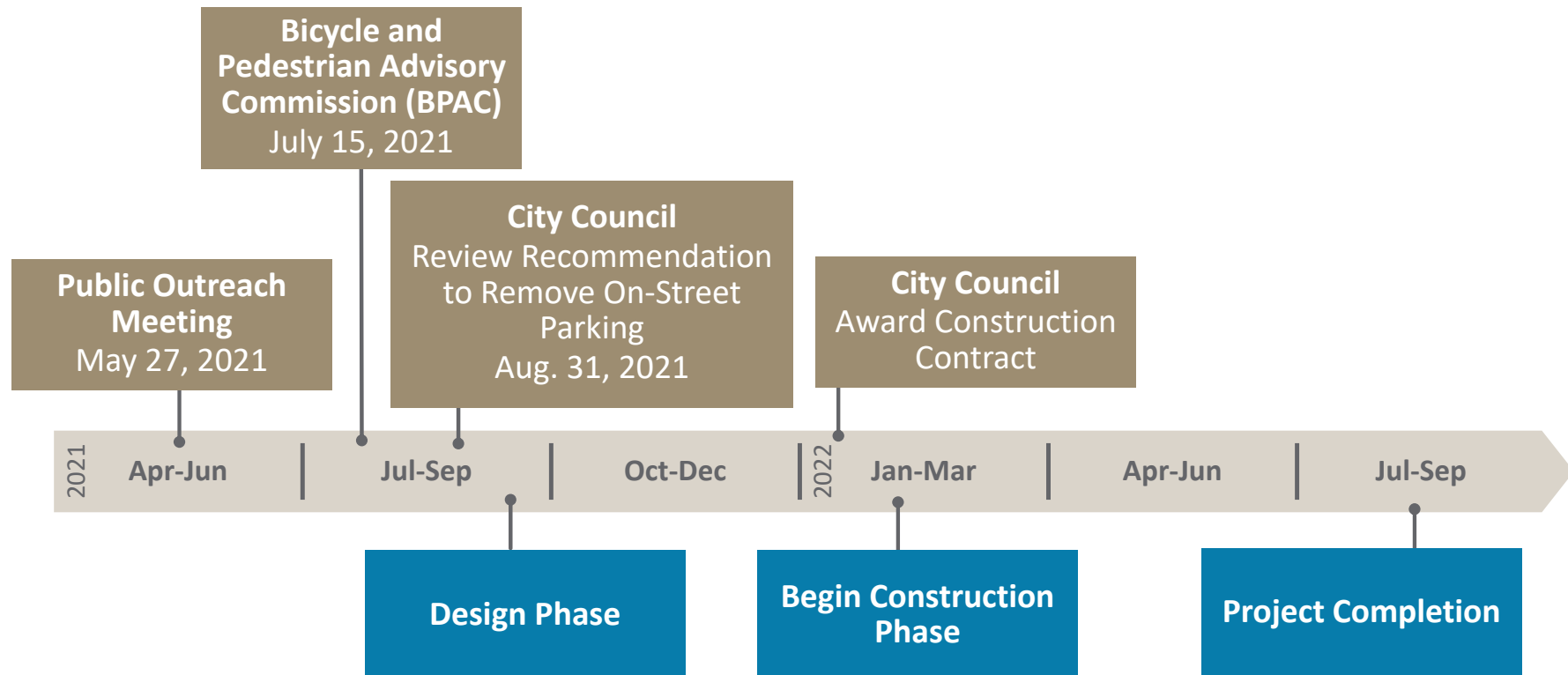
- Auto Repair Shops is currently using Willow Ave. as Storage
 - ◆ From observation – there are parking capacity on-site
 - ◆ Outreach to the Repair Shops
 - ◆ Encourage patrons and employees to park on-site
- Based on the analysis
 - ◆ Enough on-street parking capacity on the left side of Willow Ave. to accommodate parking demand from the residents within the neighborhood

Conclusion

- Recommend to Remove On-street Parking on Right Side of Willow Ave.
- Install Class II/IIB Buffered Bicycle Lanes
- Improve Bicycle Access to the Train Station
- Provide people additional options beyond driving a vehicle
- Support the City's Climate Action Plan Goal to Reduce Vehicle Emission



Willow Avenue Pedestrian and Bicycle Improvements Timeline



Recommendation to City Council

Considerations

- Alternative 1: Recommend to City Council to Remove On-Street Parking for the Northbound Direction on Willow Avenue between Reed Avenue and Aster Avenue and to Install Bicycle Lanes on Both Sides of the Street Per the Active Transportation Plan
- Alternative 2: Recommend to City Council to Maintain On-Street Parking for the Northbound Direction on Willow Avenue between Reed Avenue and Aster Avenue and Not to Install Bicycle Lanes on Both Sides of Willow Avenue

Staff Recommendation

- Alternative 1: Recommend to City Council to Remove On-Street Parking for the Northbound Direction on Willow Avenue between Reed Avenue and Aster Avenue and to Install Bicycle Lanes on Both Sides of the Street Per the Active Transportation Plan

Thank You!