



Sunnyvale

Willow Avenue Bicycle and Pedestrian Improvements

City Council
August 31, 2021



Agenda

1. Project Background
2. Proposed Improvements on Willow Avenue
3. On-Street Parking Study
4. Public Outreach
5. Recommendation to City Council
6. Next Steps

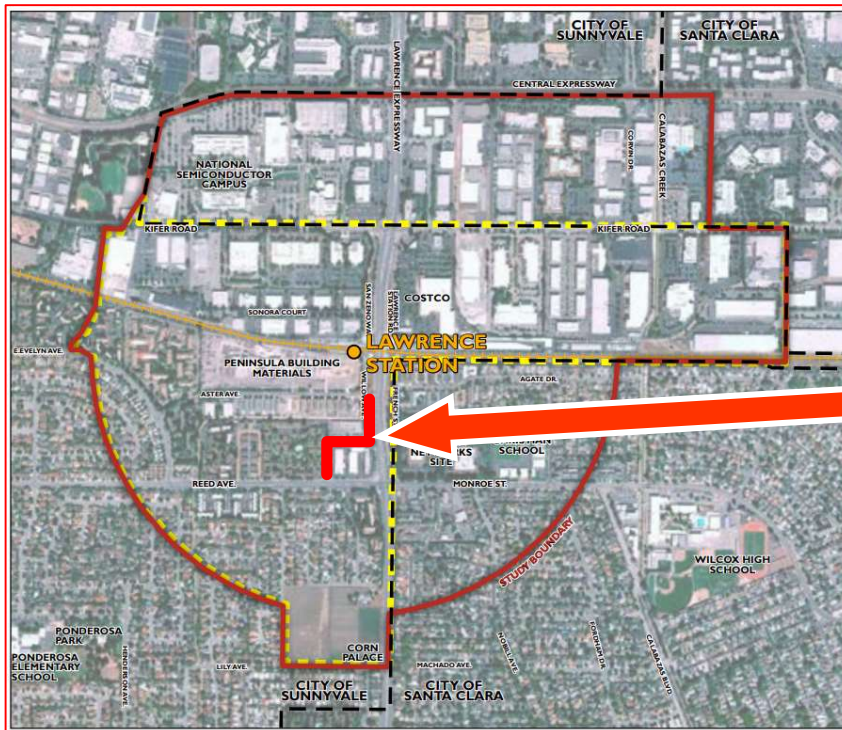


Sunnyvale

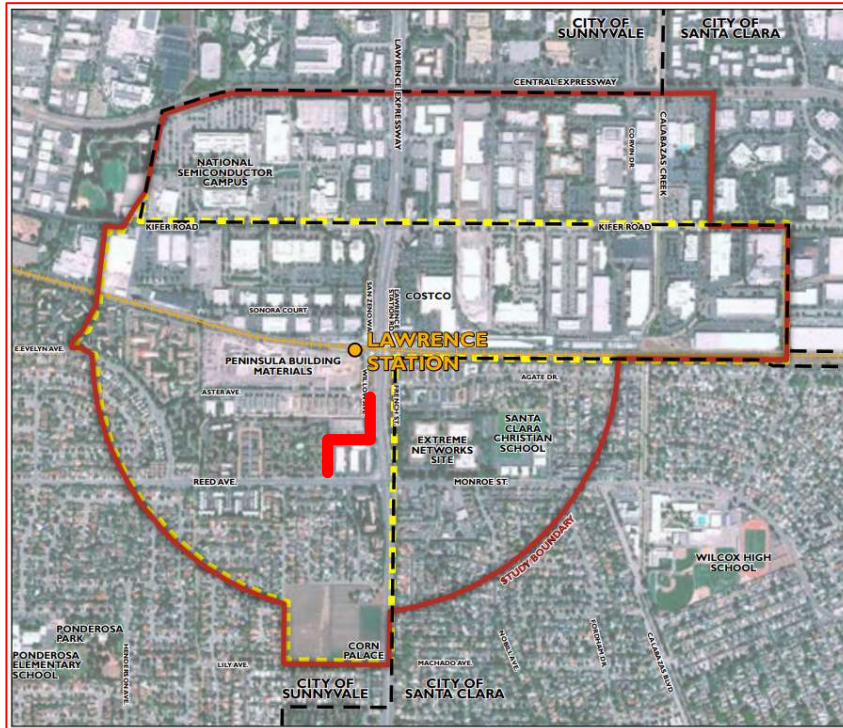
Project Background

Project Limits

Willow Ave. between Reed Ave. and Aster Ave.

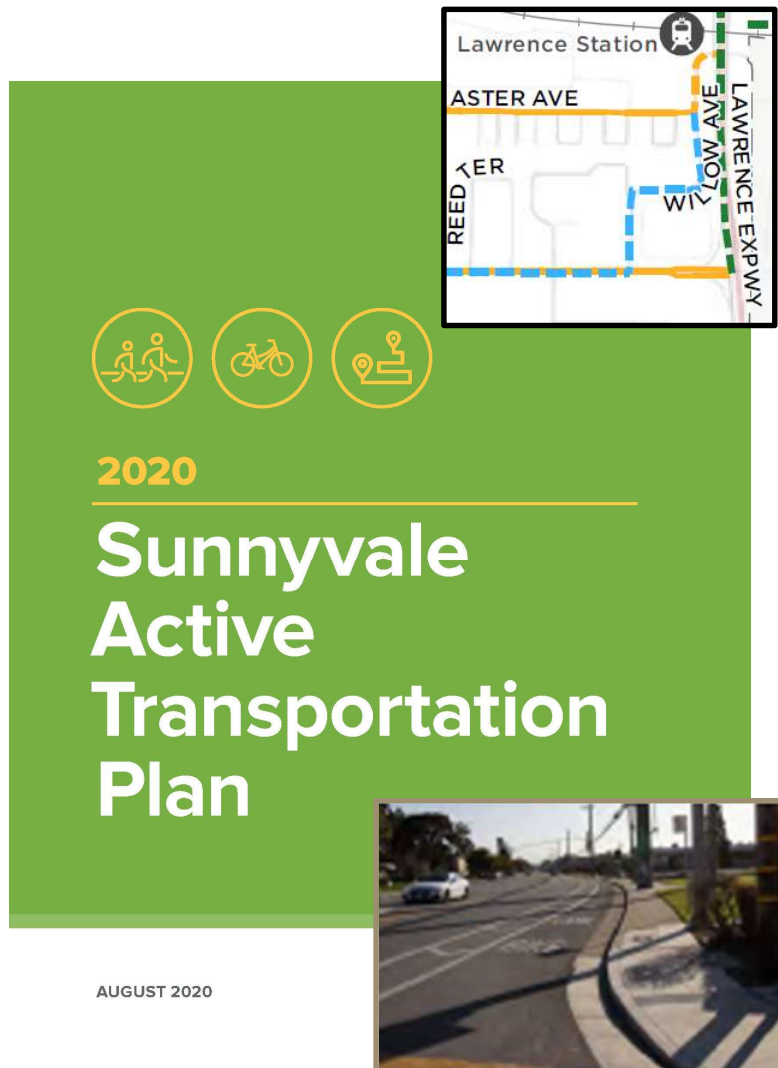


Lawrence Station Area Plan (LSAP)



- Adopted by City Council on December 6, 2016
- Willow Avenue
 - ◆ Key Access Route for Pedestrians and Bicyclists to access Lawrence Caltrain Station
 - ◆ Design Goal: To be safe and attractive for residents who walk or ride to the station
 - ◆ Improve Sidewalk Gaps
 - ◆ Proposed Class II Bicycle Lane

Active Transportation Plan (ATP)



- Goals

- ◆ To create a safe, connected and efficient citywide walking and bicycling network
- ◆ Improve Bicycle Access to the Caltrain Station
- ◆ Provide people additional options beyond driving a vehicle
- ◆ Support the City's Climate Action Plan Goal to Reduce Vehicle Emission

- Willow Avenue

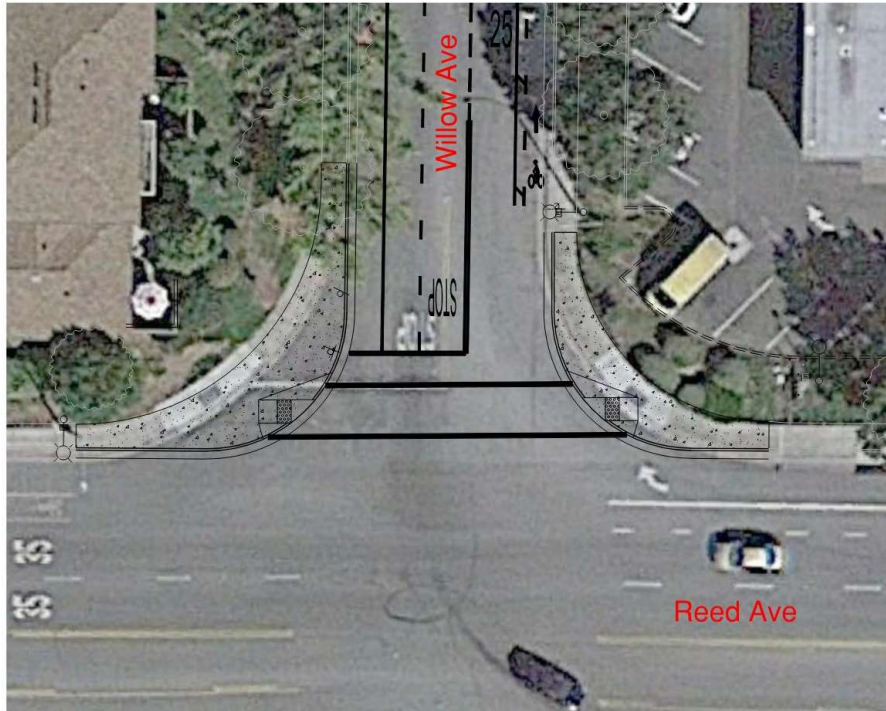
- ◆ Proposed Class II/IIB Buffered Bicycle Lane



Sunnyvale

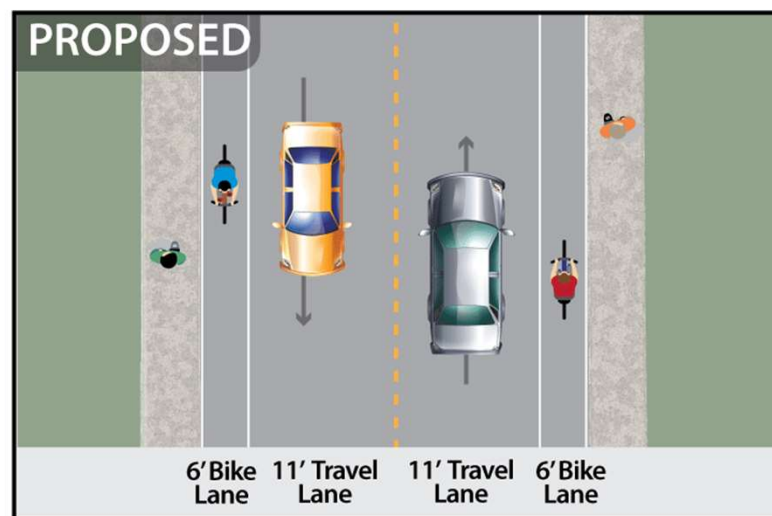
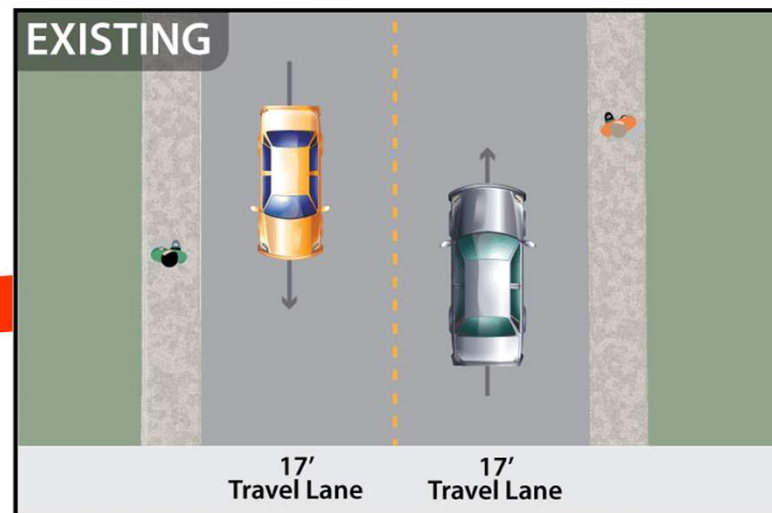
Proposed Improvements on Willow Avenue

Willow Avenue - Pedestrian Improvements

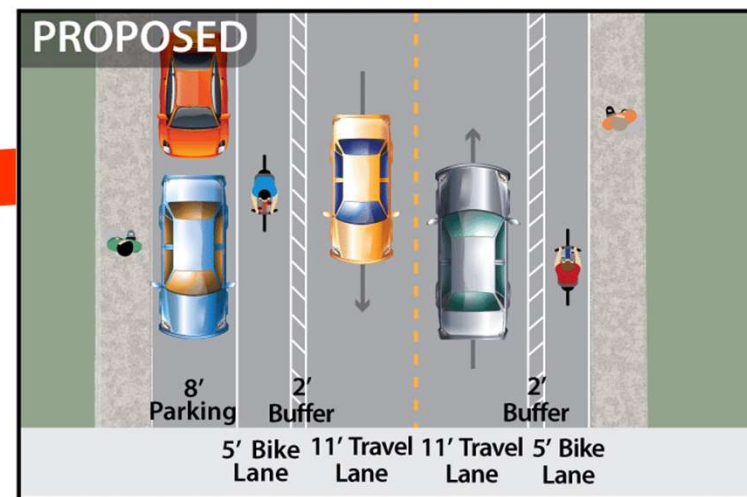
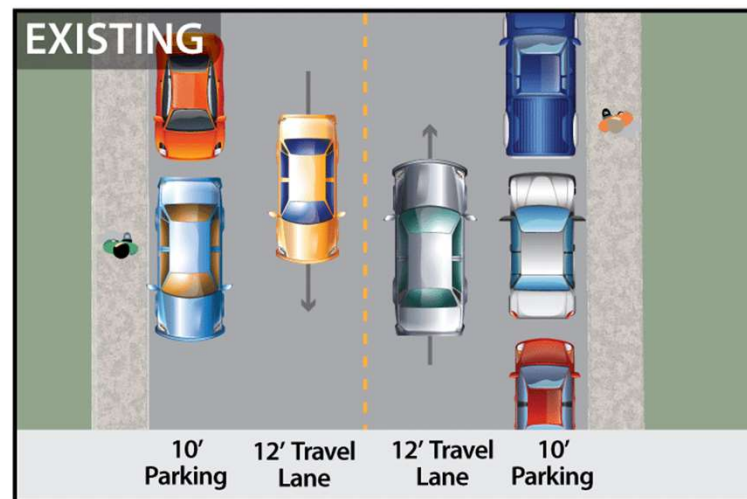


- Reduce curb radius at the NW and NE corners
- Install ADA accessible, directional curb ramp for crossing Willow Ave.
- Install a crosswalk on Willow Ave.

Willow Avenue - Bicycle Improvements



Willow Avenue - Bicycle Improvements



Proposed Improvements in Draft Lawrence Station Sense Of Place Plan

Not Part of this Project

Proposed
Sidewalk & Class II
Bicycle Lane to be
installed as part of
the 1155 Aster
Avenue
Development
Project



Note: All improvements shown are conceptual and subject to further analysis and refinement.



Sunnyvale

On-Street Parking Study

Willow Avenue On-Street Parking Study Area



- Collected data:
 - ♦ March 24, 2021
 - ♦ March 31, 2021
 - ♦ April 28, 2021
 - ♦ May 5, 2021
- Throughout the Day:
 - ♦ 11:00am
 - ♦ 3:30pm
 - ♦ 11:00pm

Legend

- On-street parking to remain
- On-street parking proposed to be removed

Willow Avenue On-Street Parking Study

Resident vs. Non-Resident Parking

- Resident Parking
 - ◆ Parked on Willow Ave. more than one day
 - ◆ Parked on Willow Ave. at Night (or all-day)
 - ◆ Non-RVs or Vans
- Non-Resident Parking (Employees/Patrons from nearby Auto Repair Shops)
 - ◆ During daytime only (11am and/or 3:30pm)
 - ◆ 1 of 4 days of observation
 - ◆ RVs or Vans

Willow Avenue On-Street Parking Study

With NB On-Street Parking Removal & Non-Resident Adjustment

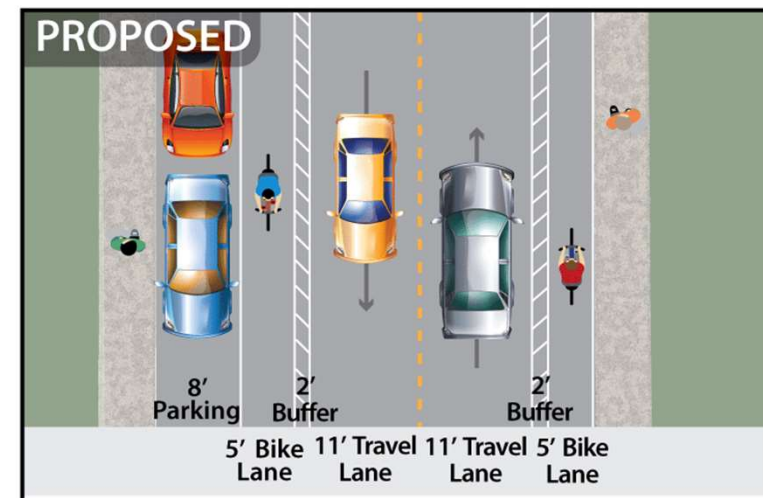
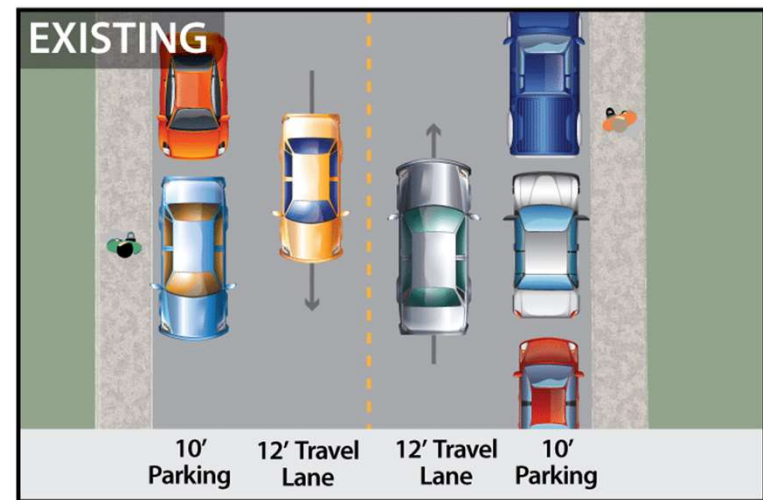
Willow Ave.	Available Spaces	Number of Parked Vehicles			
		3/24/21	3/31/21	4/28/21	5/5/21
On-Street Parking Observed					
11:00 a.m.	47	31	32	34	31
3:30 p.m.	47	32	36	32	31
11:00 p.m.	47	36	36	35	38
With Non-Resident Adjustment & On-Street Parking Removal for NB Direction (Right Side of Willow)					
11:00 a.m.	23	15	15	16	15
3:30 p.m.	23	14	16	14	14
11:00 p.m.	23	20	20	19	21

Conclusion

- Auto Repair Shops are currently using Willow Ave. as Storage
 - ◆ From observation – there is parking capacity on-site
 - ◆ Outreach to the Repair Shops
 - ◆ Encourage patrons and employees to park on-site
- Based on the analysis
 - ◆ Enough on-street parking capacity on the southbound direction of Willow Ave. to accommodate parking demand from the residents within the neighborhood

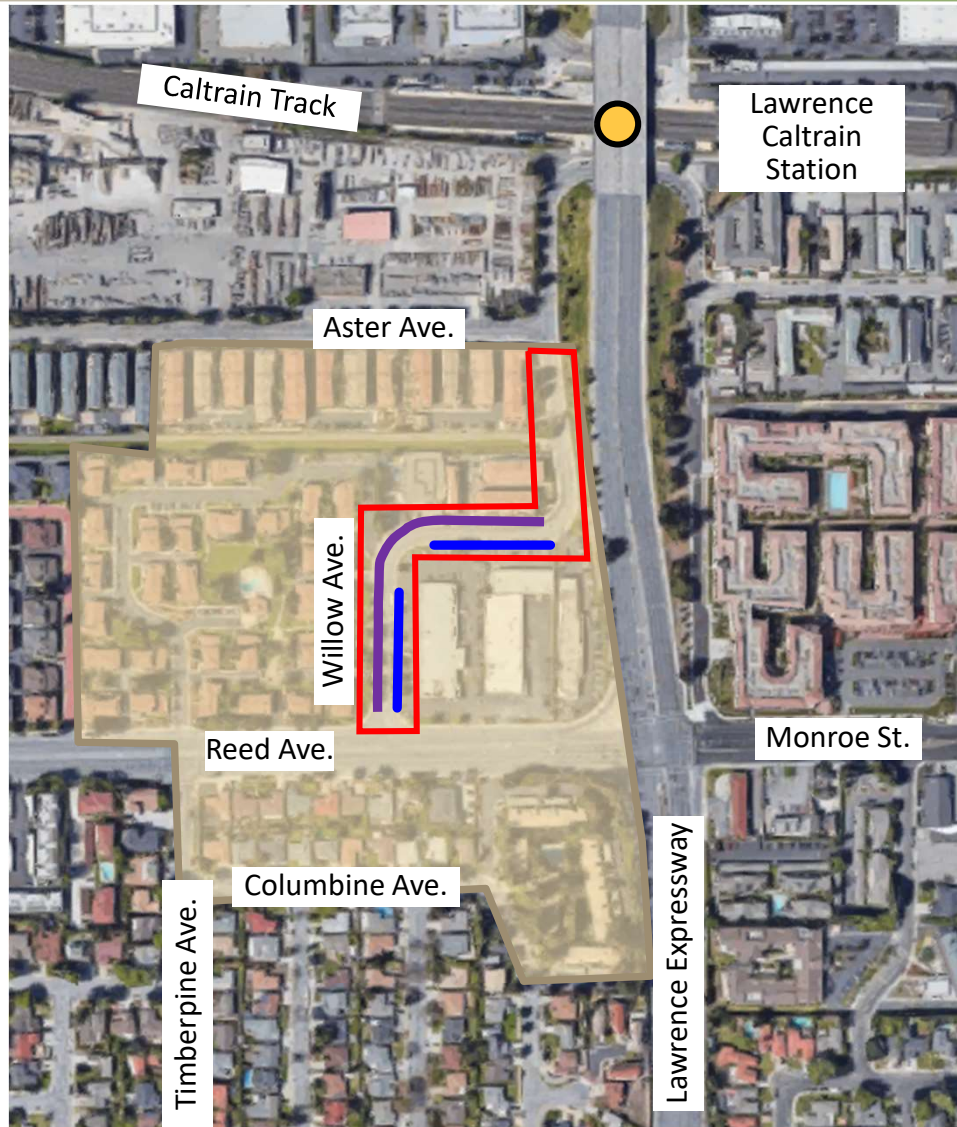
Conclusion

- Recommend to Remove On-street Parking on Northbound Direction of Willow Ave.
- Install Class II/IIB Buffered Bicycle Lanes







Public Outreach

Public Outreach Meeting Notification Area



- Virtual Public Outreach Meeting
 - ◆ Thursday, May 27, 2021
- Notified residents, property owners, and business owners via Mailer

Legend

-  Project Limits
-  On-street parking to remain
-  On-street parking proposed to be removed
-  Mailer Notification Area

Public Outreach Input

- Input from the Public
 - ◆ Virtual Public Outreach Meeting
 - Thursday May 27, 2021
 - ◆ Email
- Major Comment Heard:
 - ◆ Automobile Repair Shops utilize the existing on-street parking on Willow Avenue as storage and employee parking, instead of using on-site parking



Sunnyvale

Recommendation to City Council

Bicycle and Pedestrian Advisory Commission (BPAC) Recommendation

BPAC Recommendation: 6-0 Vote

- Alternative 1: Recommend to City Council to Remove On-Street Parking for the Northbound Direction on Willow Avenue between Reed Avenue and Aster Avenue and to Install Bicycle Lanes on Both Sides of the Street Per the Active Transportation Plan and Add a Study to Tighten the Curb Radius at the Reed Avenue/Willow Avenue Intersection
- Staff will review and minimize the crossing distance and curb radius at the intersection of Reed Avenue and Willow Avenue as part of the design phase of the project

Recommendation to City Council

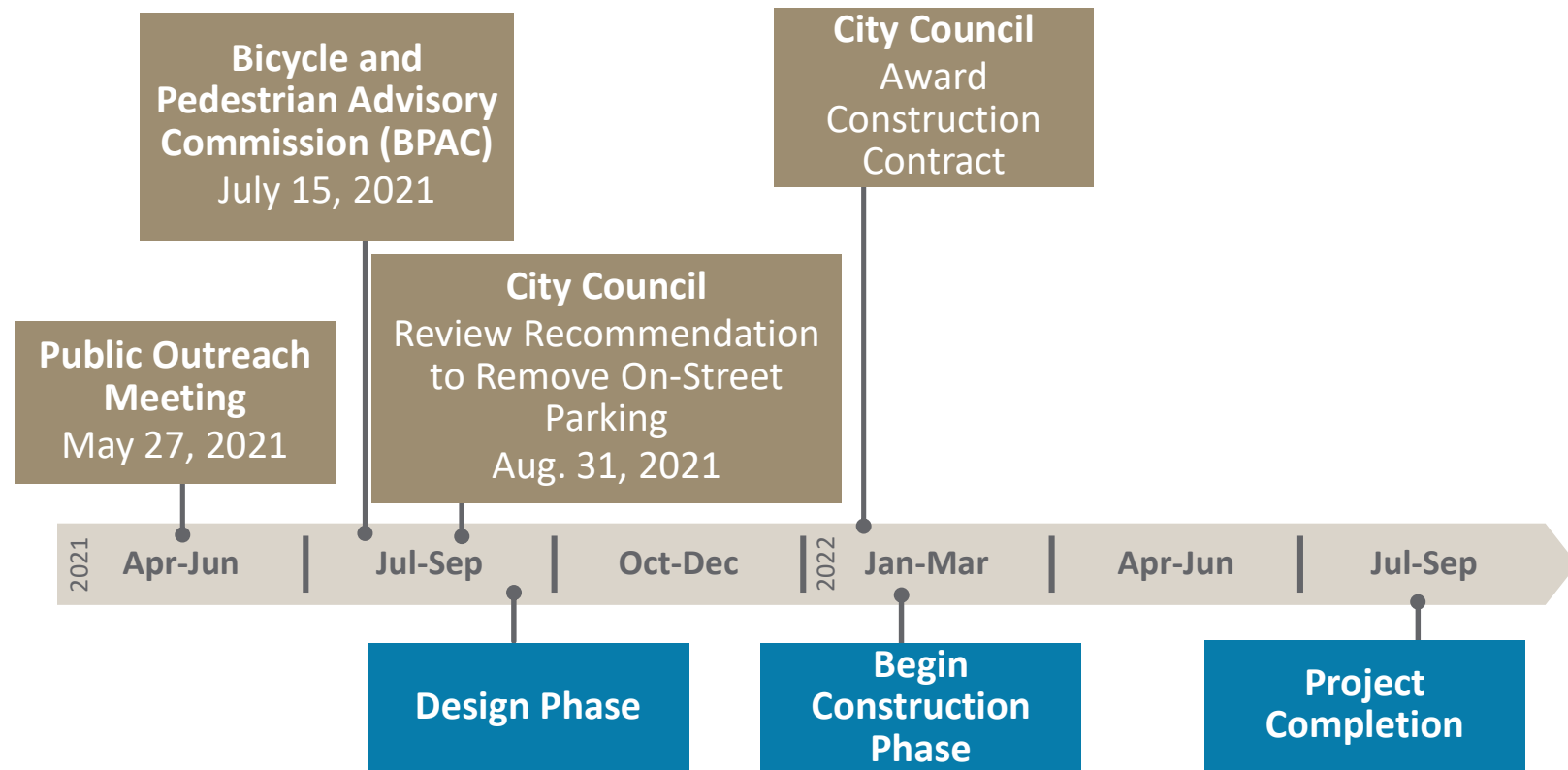
Staff Recommendation

- Alternative 1: Remove On-Street Parking for the Northbound Direction on Willow Avenue between Reed Avenue and Aster Avenue and to Install Class II/Class IIB Bicycle Lanes on Both Sides of the Street Per the Active Transportation Plan and Find That This Action is Exempt from the California Environmental Quality Act



Next Steps

Willow Avenue Pedestrian and Bicycle Improvements Timeline





Questions?