



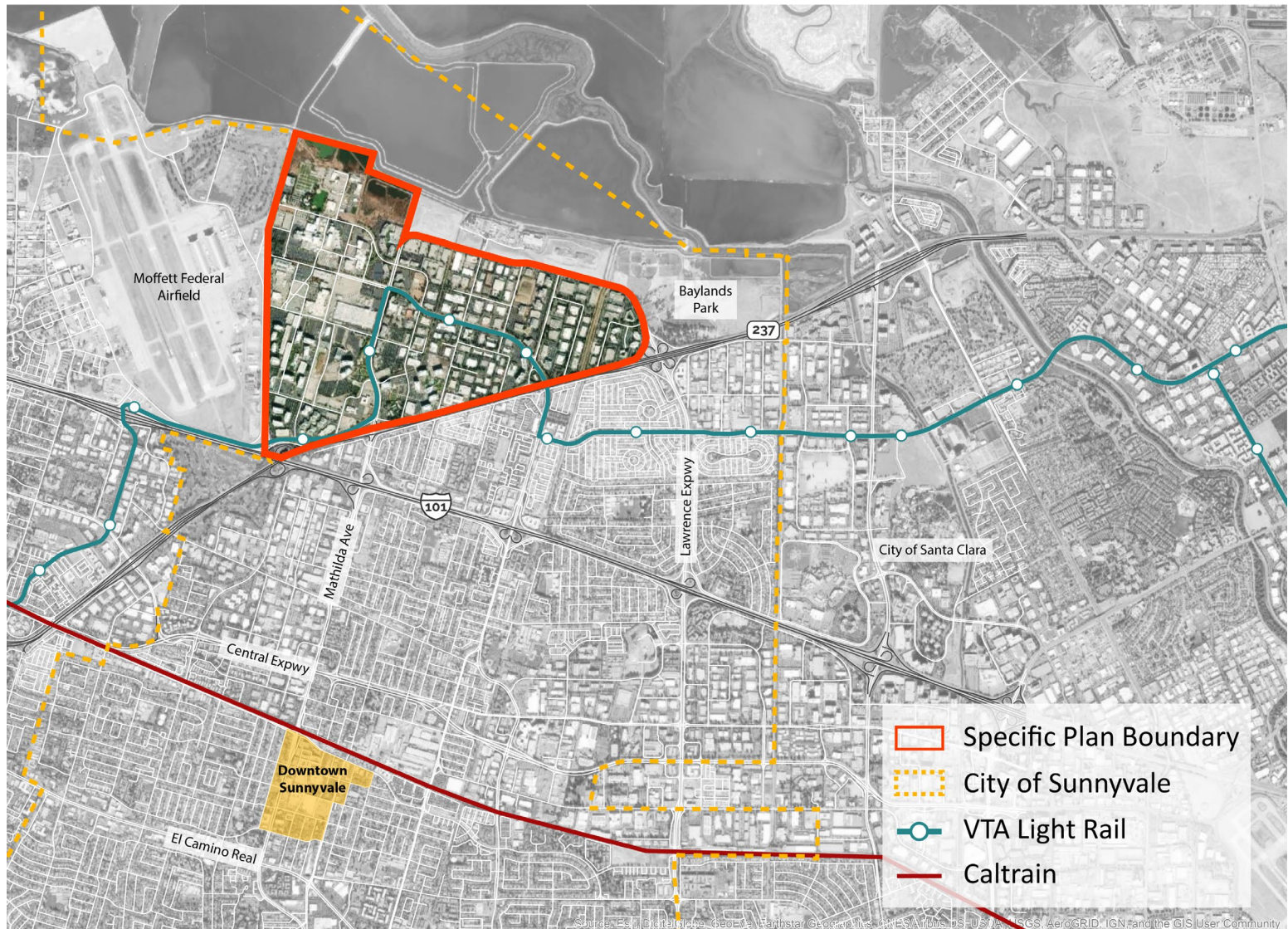
# Moffett Park Specific Plan

Joint Meeting:  
Sunnyvale City Council and Valley Water Board

October 6, 2021



# Moffett Park Specific Plan





# Vision Statement

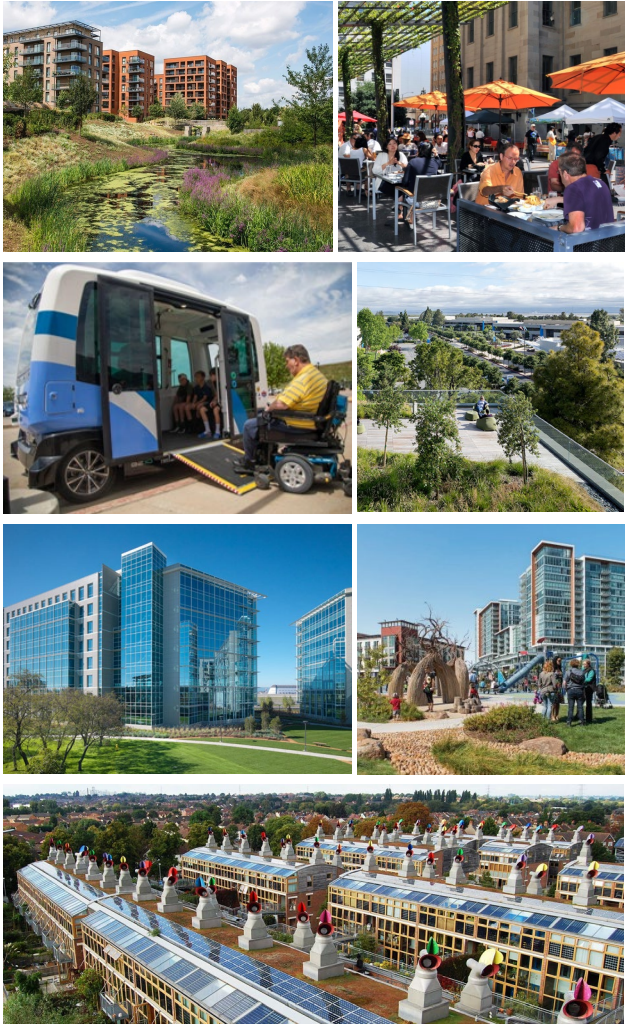
Redefine the Moffett Park Specific Plan as an  
“Ecological and Innovation District”



***Moffett Park is an integral part of Sunnyvale and is a well-connected ecological innovation district with a diverse mix of uses that serves as a model of resilience, climate protection, equity and economic opportunity.***



# Guiding Principles Summary



1. *Resilient + Equitable*
2. *Vibrant + Inclusive*
3. *Diverse Economy + Prosperity*
4. *Accessible + Pedestrian Friendly*
5. *Dynamic + Connected Public Spaces*
6. *Healthy + Biodiverse Environment*
7. *Innovative + Emerging Technology*

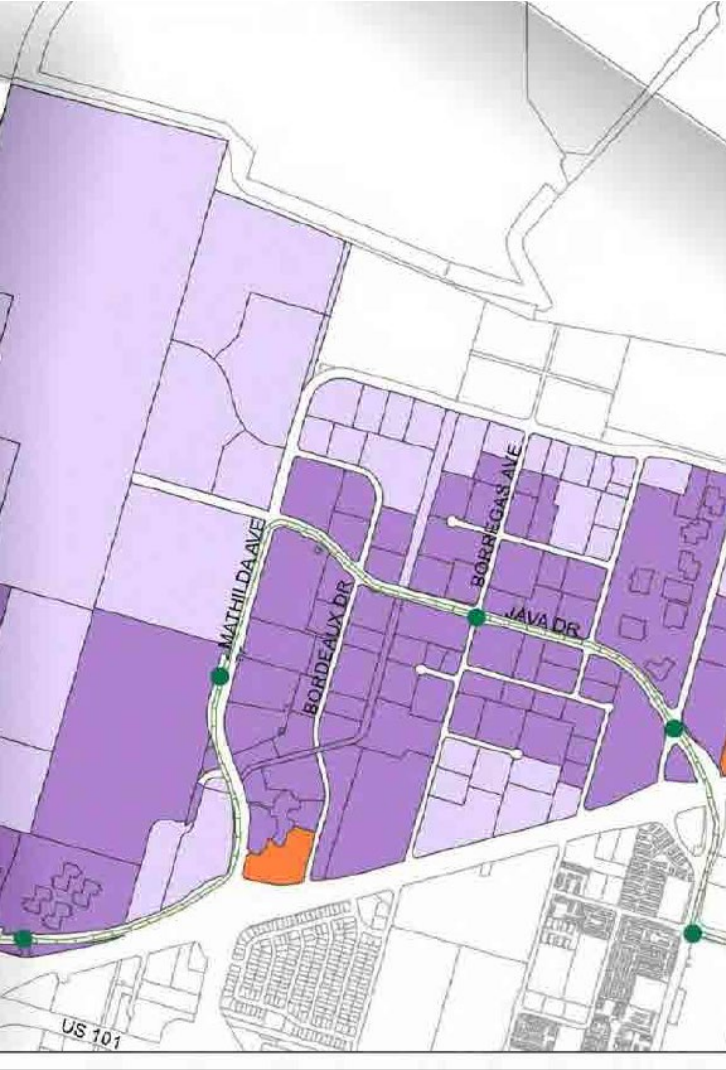
# What is a Specific Plan?

- A **comprehensive** planning and zoning tool for a small area
- Establishes the **vision and guiding principles**
- Defines **policy and development standards**
- Strong focus on **implementation**



## CITY OF SUNNYVALE MOFFETT PARK SPECIFIC PLAN





# Specific Plan Requirements

- **Distribution, location, and extent of the uses of land**, including open space
- Proposed distribution, location, and extent and intensity of major components of **transportation and infrastructure**
- **Development standards**
- A program of **implementation measures**
- A statement of the **relationship of the specific plan to the general plan**



## City Council + Planning Commission Direction

- Create comprehensive **community involvement strategy**
- Consider the potential **economic impacts of adding housing** while directing growth toward **transit supportive uses and improvements**
- Redefine the Moffett Park Specific Plan as an **“Ecological and Innovation District”**
- Improve vehicular, pedestrian, bicycle and transit **connectivity**
- Develop and implement **urban design standards for streets, streetscapes, buildings and open space**, which promote walkable and livable environments
- Prepare an **implementation strategy for infrastructure** and services
- Prepare a program-level environmental impact report

# Past Project Meetings

- Virtual Public Workshops and Special City Council Study Session Series
  - **11/30/20:** Sea Level Rise & Climate Change
  - **02/01/21:** Transportation & Infrastructure
  - **03/02/21:** Land Use, Housing, Open Space, & Market Conditions
- May 2021: Land Use Concepts and Alternatives
- Aug 2021: EIR Notice of Preparation Released



# Moffett Park Specific Plan Land Use Direction

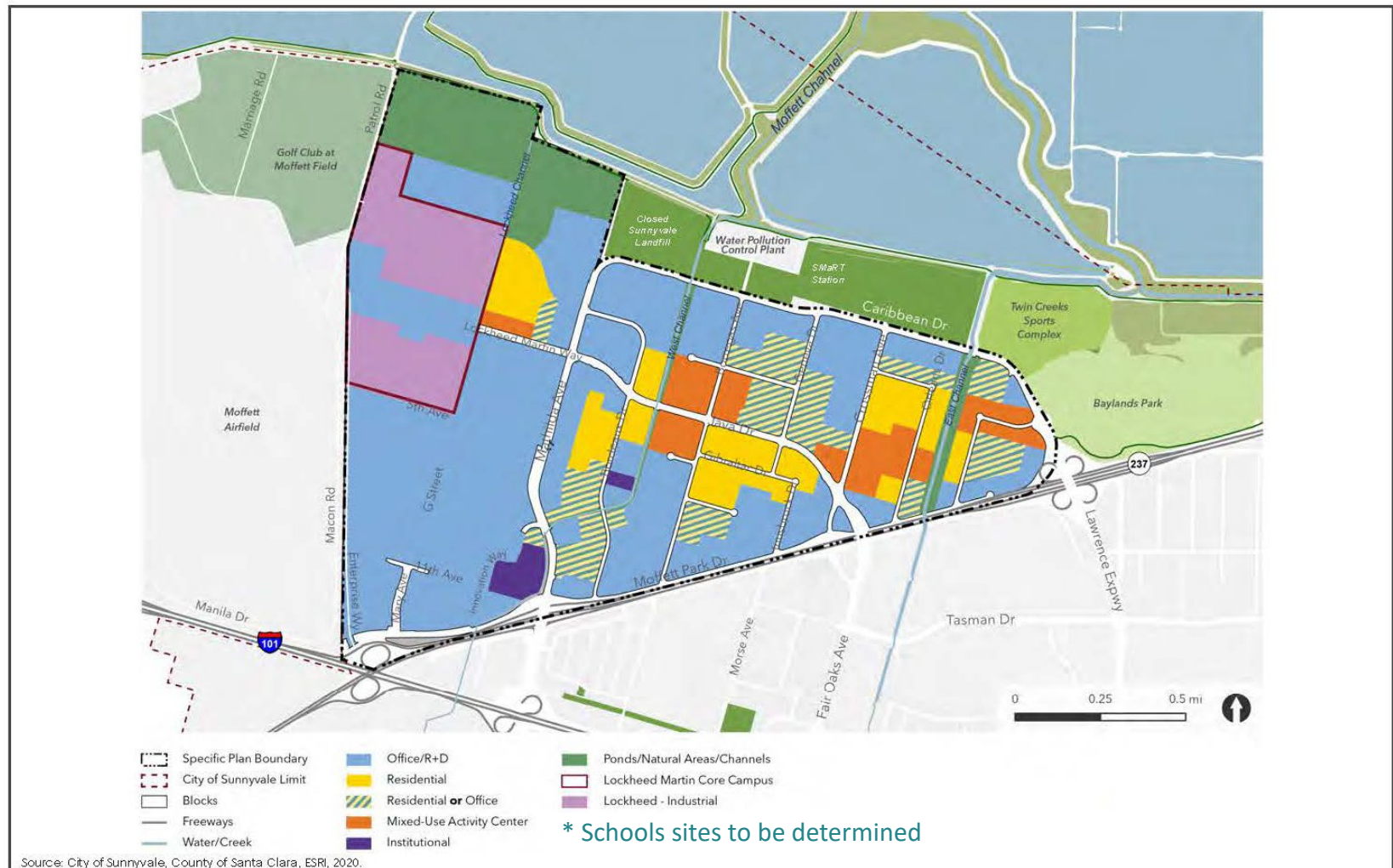


FIGURE 4

# Land Use Program for Study

- + 10 million sf (net new) of Office/R+D/Flex
- + 20,000 housing units
- + 500,000 (net new) sf commercial
  - 2 Activity Centers (200K or larger)
  - 3 to 5 Neighborhood Corners (3-10K)

## Open Space/Urban Ecology

- Parks, plazas and other open space
- Connected network of eco-patches (Eco-Corridors/Linear Parks)

*...continued on next slide*



# Land Use Program for Study

*...continued from prior page*

## Community Facilities and Services

- Public school/s

## Circulation/Mobility Network

- Explore Connected network of streets/paths/trails/and open spaces
  - Linkages across Streets and Water Channels
    - Live
    - Work
    - Shopping
    - Play

# Environmental Issue Areas under Study

- Aesthetics
- Air Quality
- Biological Resources
- Cultural Resources
- Geology and Soils
- Greenhouse Gas Emissions
- Hazards and Hazardous Materials
- Hydrology and Water Quality
- Land Use
- Noise and Vibration
- Population and Housing
- Public Services
- Recreational Facilities
- Transportation
- Tribal Cultural Resources
- Utilities and Service Systems



# Technical Working Group

- Affordable House Advocates
- Sunnyvale School District
- Santa Clara Valley Unified School District
- Fremont School District
- Foothill-De Anza Community College
- Airport Land Use Commission
- Valley Transportation Agency
- CalTrans
- California Fish and Wildlife
- Valley Water
- Silicon Valley Clean Energy
- Ecology Advocates
- Neighboring jurisdictions
- All City of Sunnyvale Departments

# Outreach and Coordination Efforts

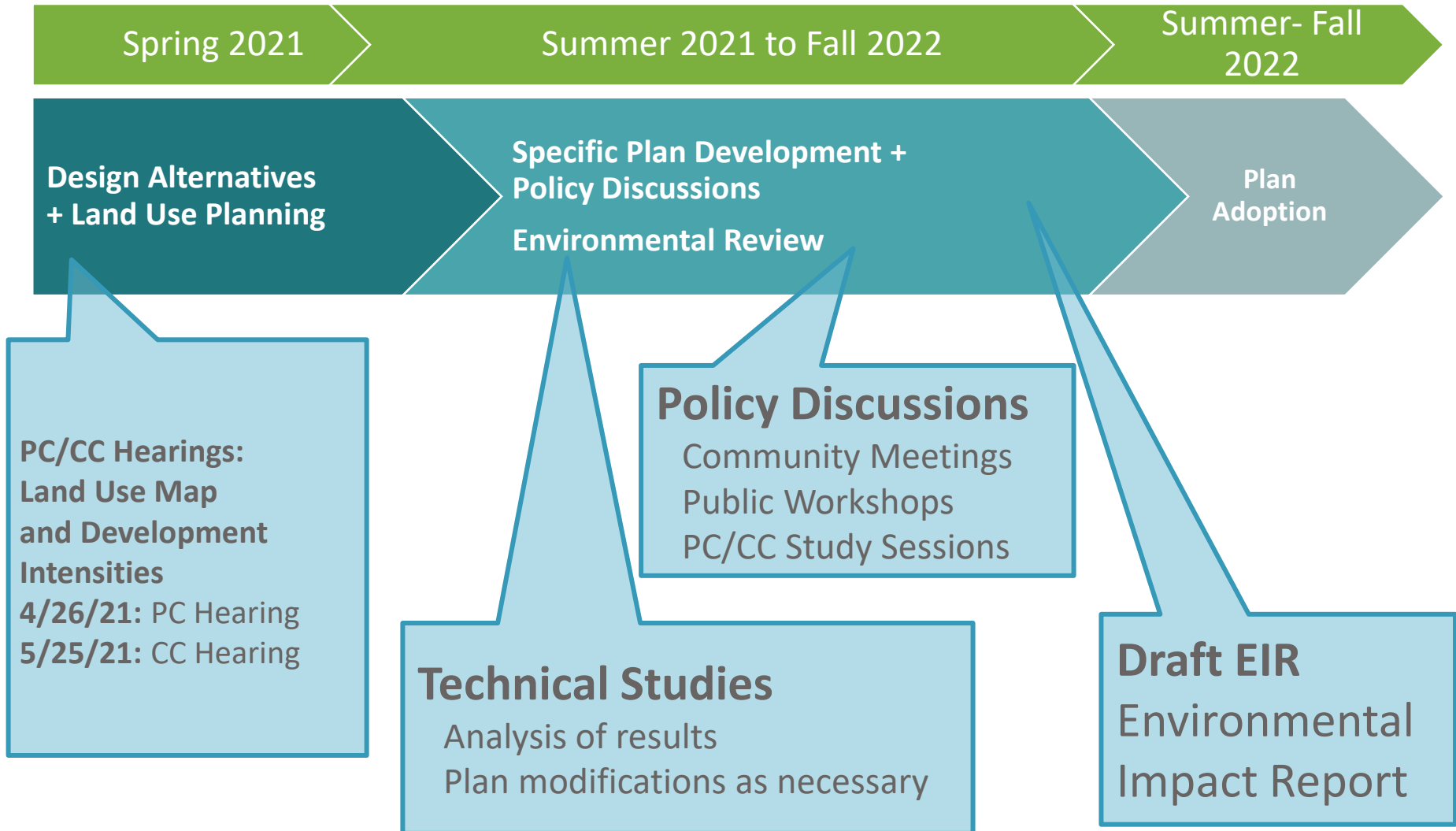
<https://www.moffettparksp.com>

- Project Updates
- Technical Studies
- Informative videos
- Study sessions and public events materials





# Planning Process Overview



# Next Steps

- Upcoming Study Sessions
- Further Collaboration with Technical Working Group, Stakeholders, Advocates
- Online Engagement
- Draft Specific Plan
- Draft EIR
- Public Hearings: Planning Commission and City Council
- Completion Fall 2022

An aerial photograph of the Moffett Park area in San Francisco. The image shows a mix of urban development, including residential neighborhoods, commercial buildings, and industrial areas. A large green semi-transparent rectangle is overlaid on the center of the image, containing the text "Questions & Comments". In the background, the San Francisco Bay and the Golden Gate Bridge are visible under a clear blue sky.

# Questions & Comments